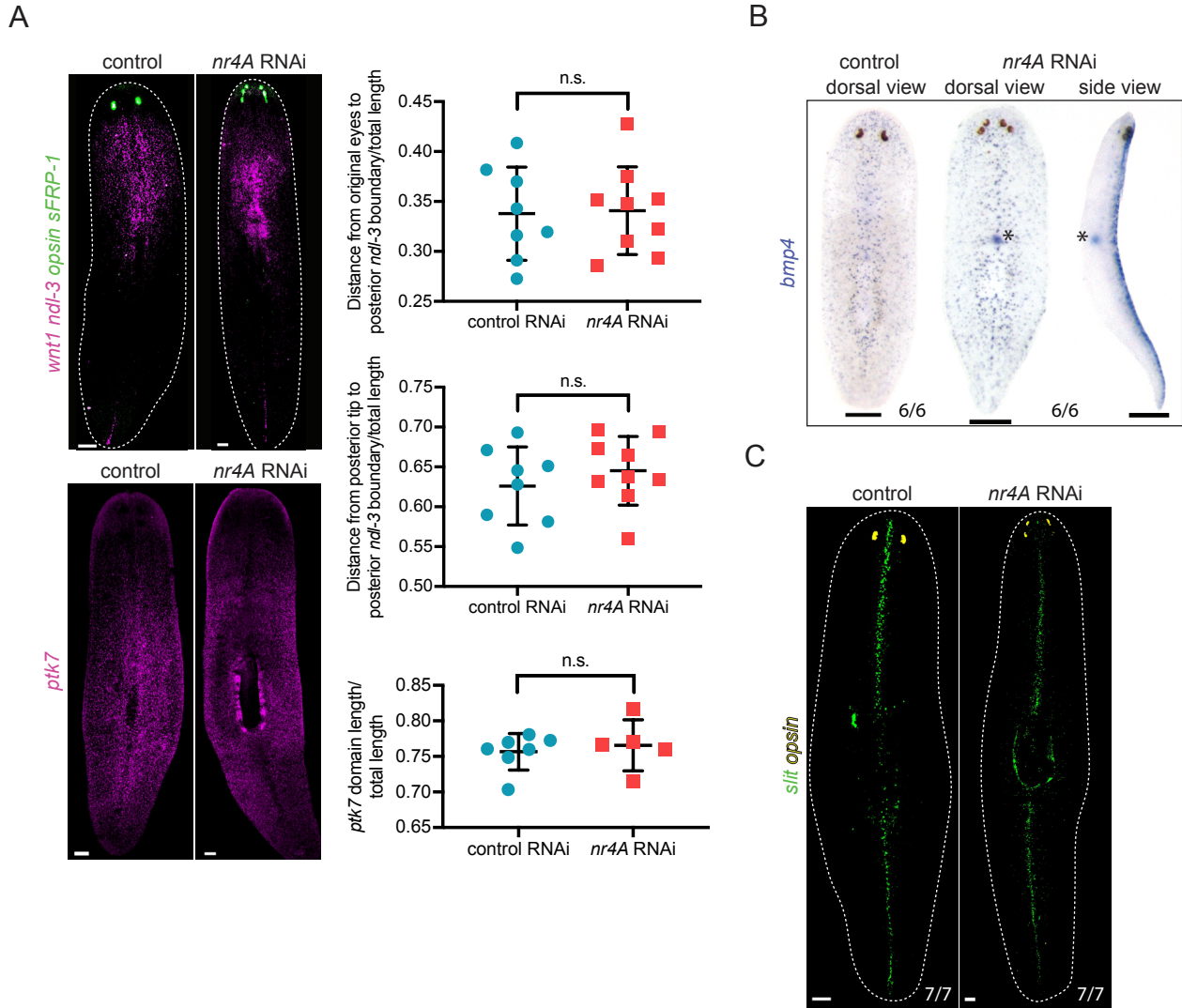


## Figure 3-figure supplement 3



**Figure 3-figure supplement 3. Mid-body, dorsal-ventral, and midline pattern are largely intact in *nr4A* RNAi.** (A) *ndl-3* and *ptk7* expression by FISH in control and *nr4A*(RNAi) animals, and quantifications of their domain boundaries. *ptk7* domain length was defined by the distance between its anterior and posterior boundaries. All measurements were normalized by animal length. Statistical comparisons were done using one-tailed Welch's *t*-tests (Supplementary file 1D). n.s. = not significant at a level of 0.05. Scale bar represents 200 $\mu$ m. (B) *bmp4* expression pattern by colorimetric ISH in control and *nr4A*(RNAi) animals. There was no ventral ectopic *bmp4* expression in *nr4A* RNAi (side view). *bmp4* expression in the esophagus (asterisk) was increased in *nr4A*(RNAi) animals compared to control animals. Proportions indicate fraction of animals analyzed with phenotype shown. Scale bar represents 200 $\mu$ m. (C) *slit* expression by FISH in control and *nr4A*(RNAi) animals. Proportions indicate fraction of animals analyzed with phenotype as shown. Scale bar represents 200 $\mu$ m. Fluorescence images are maximum intensity projections. Images are representative of results seen in at least 4 animals.