

Figure 2-figure supplement 1

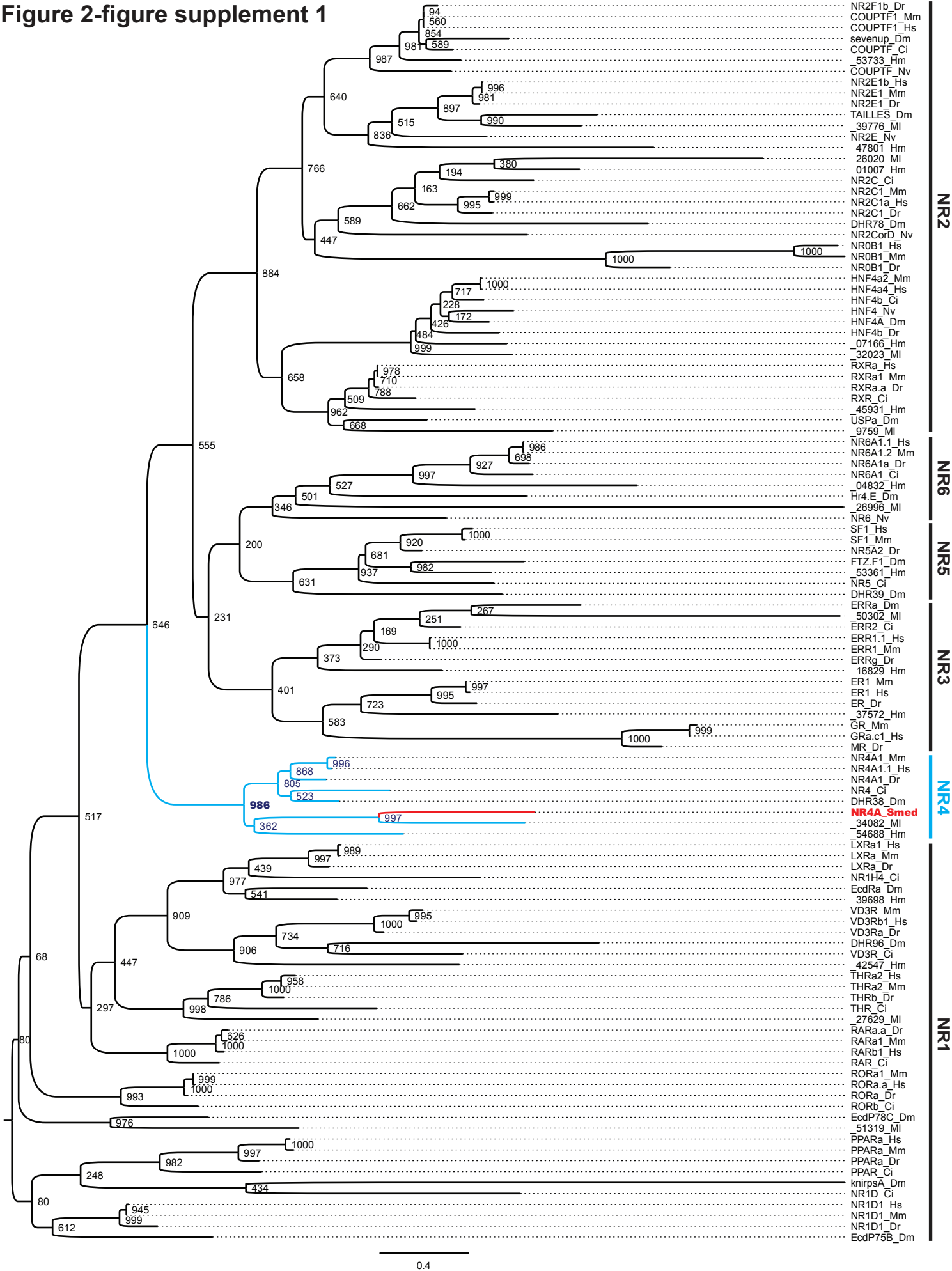


Figure 2-figure supplement 1. Phylogenetic analysis of *Schmidtea mediterranea* NR4A. Tree showing the protein sequence of the translated *Schmidtea mediterranea* nr4A mRNA (NR4A_Smed) along with representative protein sequences from each of the six nuclear receptor subfamilies annotated on the right from *Homo sapiens* (Hs), *Mus musculus* (Mm), *Danio rerio* (Dr), *Ciona intestinalis* (Ci), *Drosophila melanogaster* (Dm), *Macrostomum lignano* (Ml), *Nematostella vectensis* (Nv), and *Hofstenia miamia* (Hm). Numbers at the nodes denote the number of trees consistent with branch placements at those nodes from 1,000 bootstrap replicates. The blue-colored clade denotes the NR4A subfamily, with the red-colored branch denoting the *Schmidtea mediterranea* NR4A.