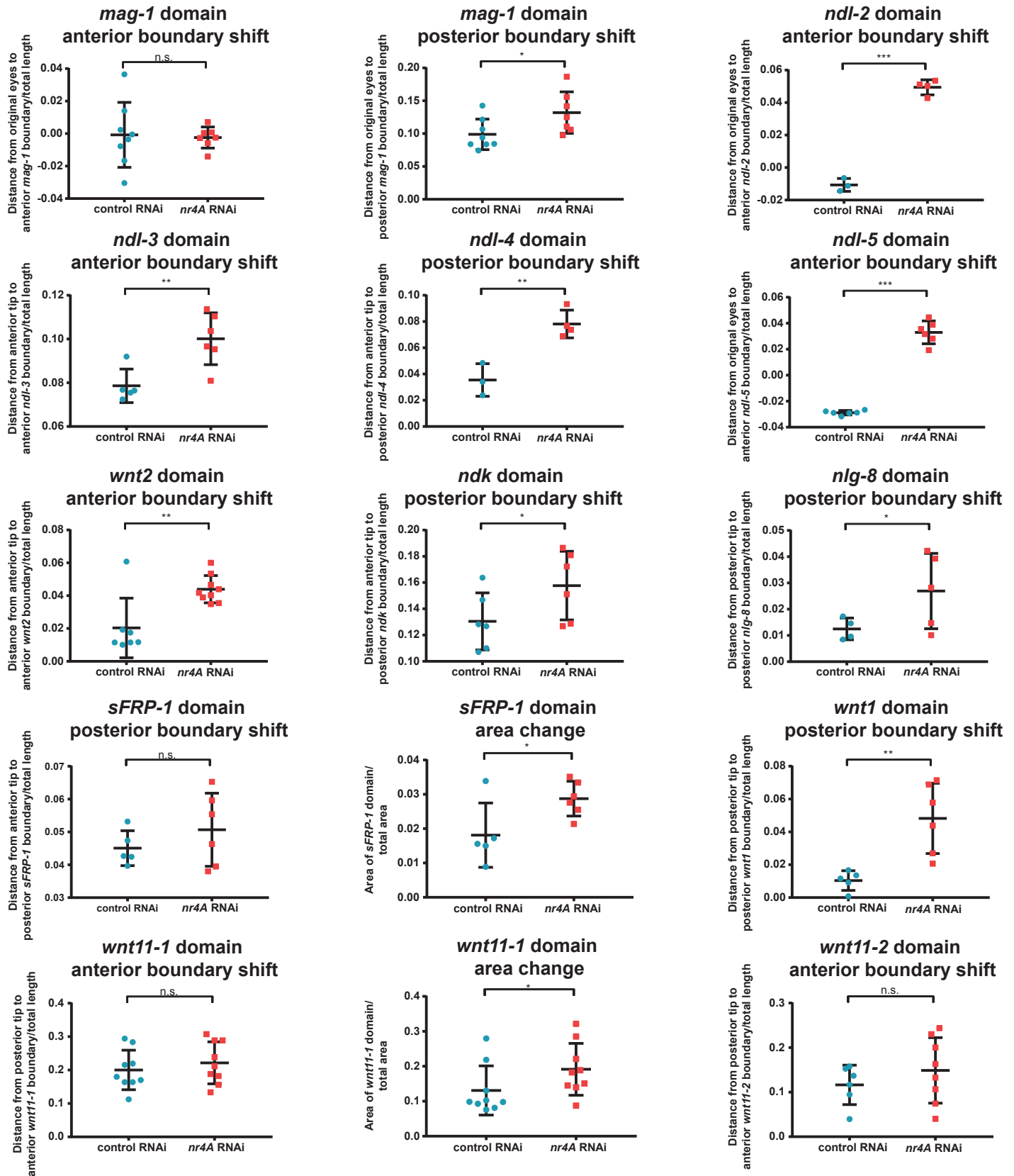


## Figure 3-figure supplement 1



**Figure 3-figure supplement 1. Quantification of shifts in PCG and *mag-1* expression domains in *nr4A* RNAi.** Graphical representations of quantifications of shifts in PCG and *mag-1* expression boundaries relative to the anterior tip, eyes, or posterior tips of animals at 9 weeks of *nr4A* RNAi and control RNAi (Supplementary file 1D). Statistical comparisons were done using one-tailed Welch's *t*-tests. Distances were normalized to total worm length. The boundaries of *sFRP-1* and *wnt11-1* expression domains were not significantly shifted in *nr4A* RNAi compared to those in control, but their expression domain areas (normalized to total animal area) were significantly greater in *nr4A* RNAi than in control. n.s. = not significant at a level of 0.05. \* =  $p < 0.05$ , \*\* =  $p < 0.01$ , \*\*\* =  $p < 0.001$ .