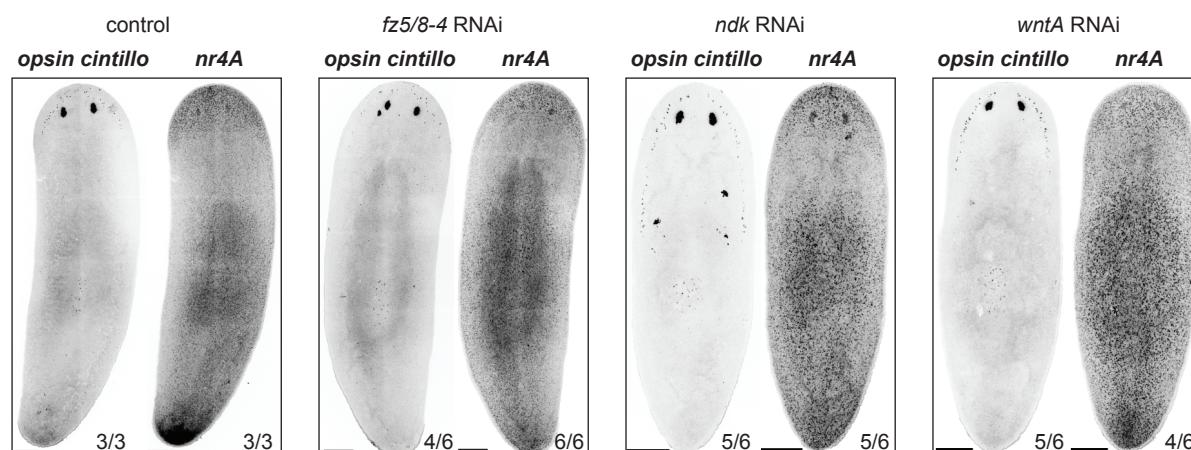


Figure 3-figure supplement 2

A



B

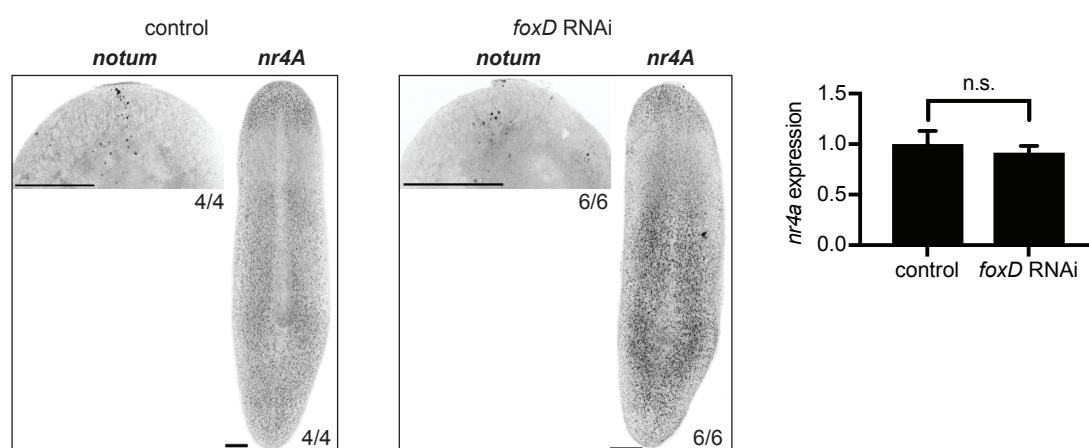


Figure 3-figure supplement 2. *nr4A* expression is independent of anterior PCGs. (A) *nr4A*, *opsin*, and *cintillo* expression by FISH in control, *fz5/8-4*, *ndk*, and *wntA*(RNAi) animals. (B) *nr4A* and *notum* expression in control and *foxD*(RNAi) animals by FISH. qPCR quantification of *nr4A* expression in the same batch of animals as those analyzed by FISH on the right. Statistical comparison was performed with two-tailed Welch's *t*-test. n.s. = not significant at a level of 0.05. Proportions indicate fraction of animals analyzed with phenotype shown. Images are maximum intensity projections. Scale bars represent 200µm.