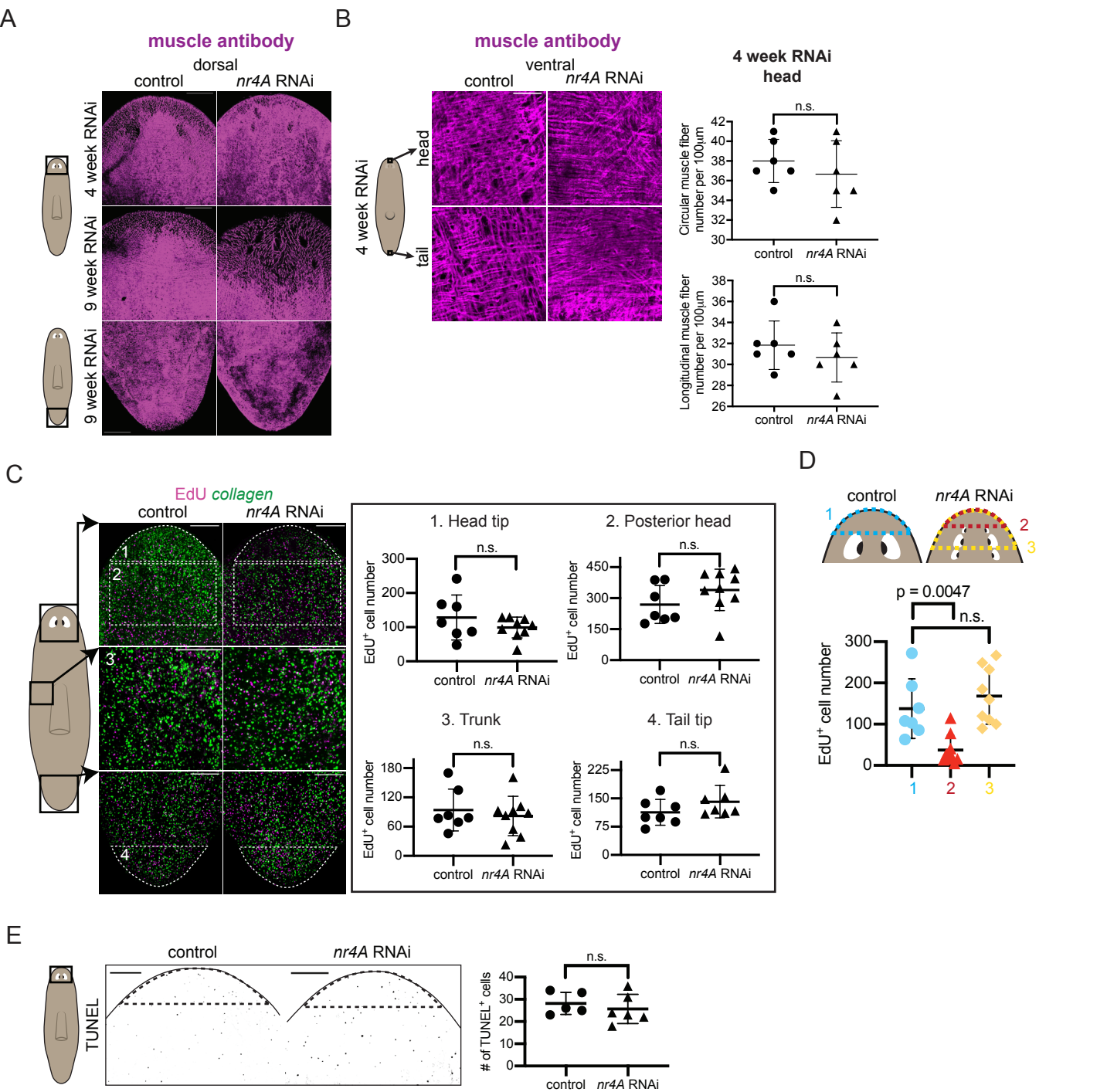


Figure 6-figure supplement 1



**Figure 6-figure supplement 1. Effects of *nr4A* inhibition on muscle fibers, total EdU incorporation, and apoptosis.** (A) Immunofluorescence with muscle antibody (6G10) of dorsal head and tail of control and *nr4A(RNAi)* animals. Scale bars represent 200 $\mu$ m (B) Higher magnification view of muscle fibers in the ventral head and tail tip of RNAi animals and muscle fiber quantification. Scale bars represent 25 $\mu$ m. (C) EdU antibody staining and *collagen* FISH of 9 week control and *nr4A(RNAi)* animals (left) and quantification of the number of EdU<sup>+</sup> cells in each of the numbered regions matched by area between control and *nr4A(RNAi)* animals (right). Scale bars represent 150 $\mu$ m. (D) Quantification of the number of EdU<sup>+</sup> cells anterior to the eyes in control animals (blue), and anterior to the original eye pair (red) and to the posterior-most ectopic eye pair (yellow) in *nr4A(RNAi)* animals. (E) Staining of apoptotic cells with TUNEL and quantification of the number of TUNEL<sup>+</sup> cells in equivalent head tip regions (by location and area, marked by dotted lines). All statistical comparisons were done with one-tailed Welch's *t*-tests. Scale bars represent 150 $\mu$ m. Areas imaged are indicated by the box in the cartoons on the left. Images are maximum intensity projections.