

Figure 7-figure supplement 1

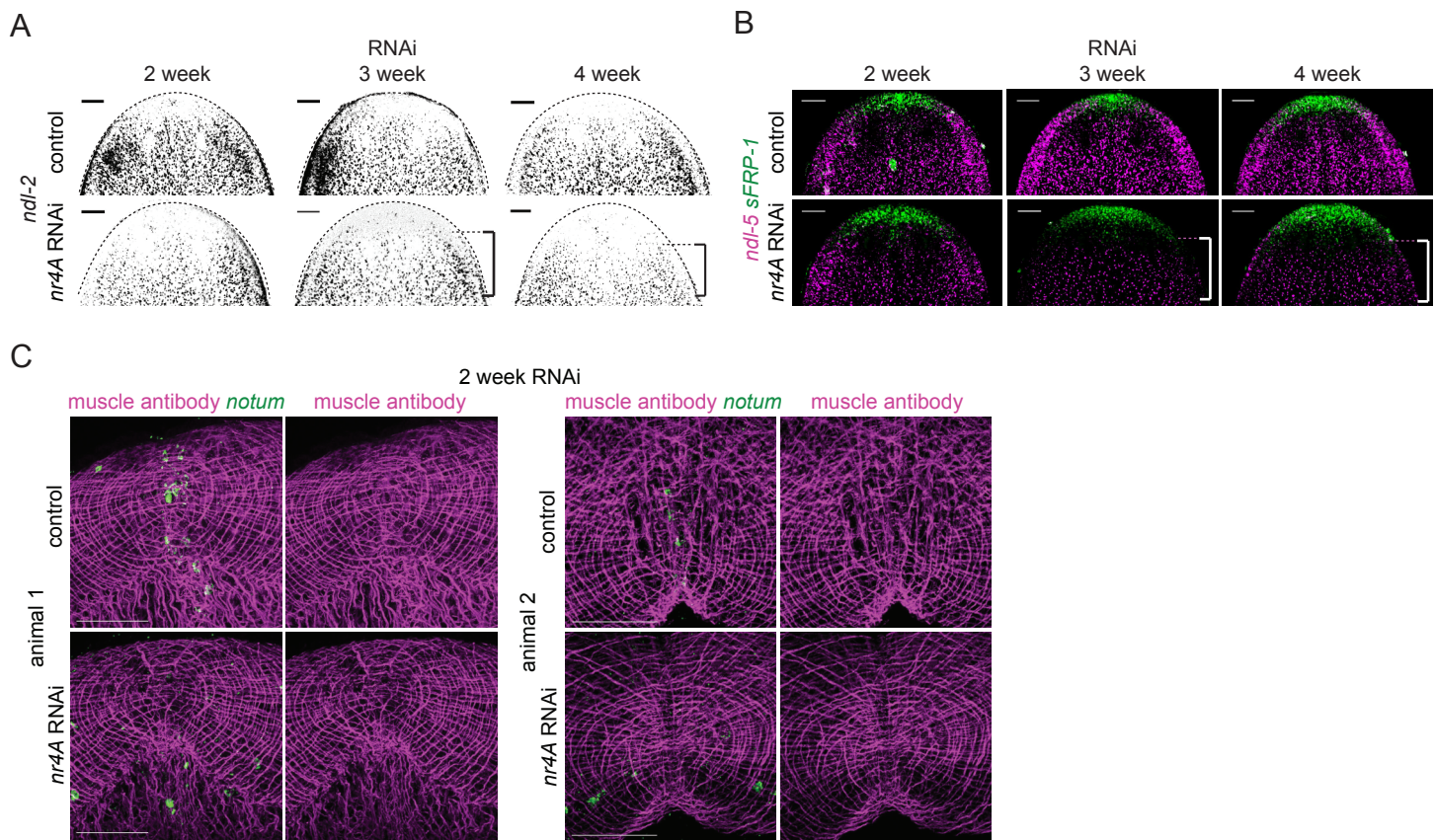


Figure 7-figure supplement 1. Shifts in PCG expression domains precede muscle fiber changes in *nr4A* RNAi. (A) *ndl-2* expression by FISH in the heads of animals at 2, 3, and 4 weeks of RNAi corresponding to Figure 7A. The posterior shifts (brackets) of the anterior boundary of *ndl-2* expression domain are more clearly seen in this single-channel representation. Quantification is shown in Supplementary file 1D. Anterior animal borders are marked by dotted arches. Scale bars represent 100µm. (B) *ndl-5* and *sFRP-1* expression by FISH in the heads of animals at 2, 3, and 4 weeks of RNAi. Quantification is shown in Supplementary file 1D. Scale bars represent 100µm. (C) Head-on view of the head tips of additional animals showing the loss of pole (*notum*⁺) cells from the apex of the head in *nr4A* RNAi, with muscle fibers (stained by muscle antibody 6G10) remaining unchanged compared with control. Scale bars represent 100µm. Images are representative of results seen in at least 4 animals. Images are maximum intensity projections.