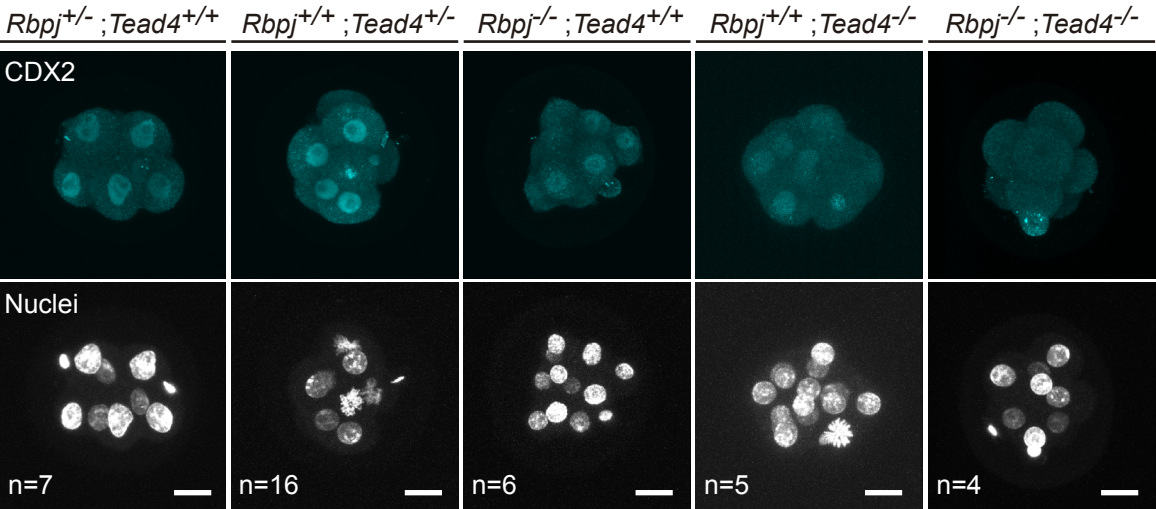


A

<i>Rbpj</i>	+/+	+/+	+/-	+/-	+/+	-/-	+/-	-/-	-/-	Total
<i>Tead4</i>	+/+	+/-	+/+	+/-	-/-	+/+	-/-	+/-	-/-	
Number of embryos	11	27	10	39	10	8	15	21	9	150
% of embryos	7.33	18	6.67	26	6.67	5.33	10	14	6	100
expected %	6.25	12.50	12.50	25	6.25	6.25	12.50	12.50	6.25	100

B



C

