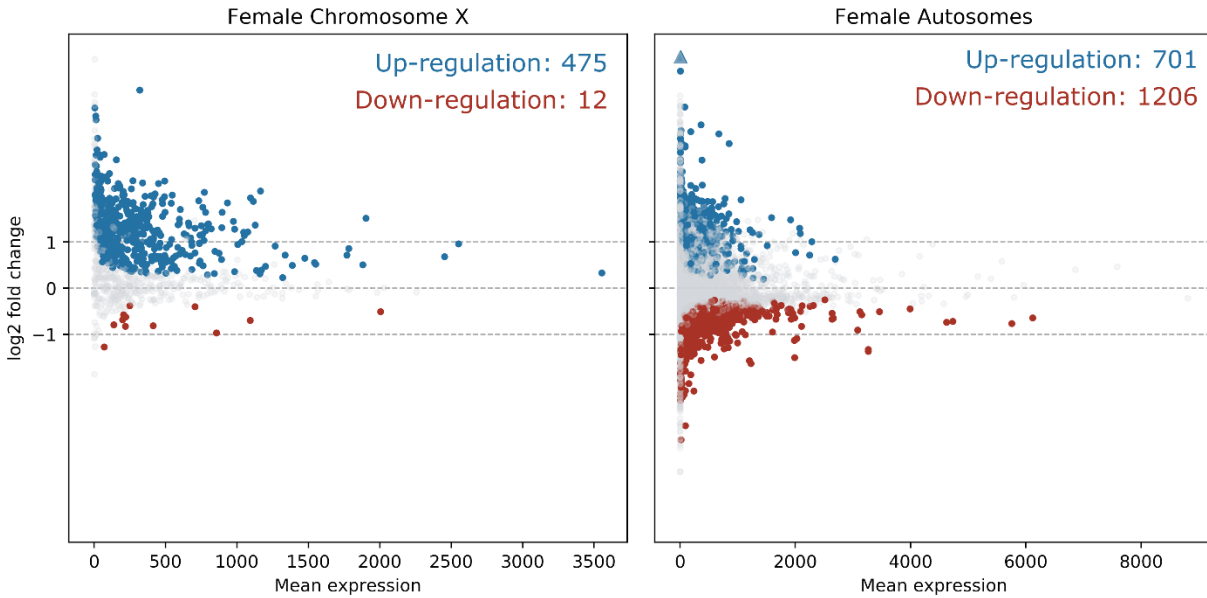


A



B

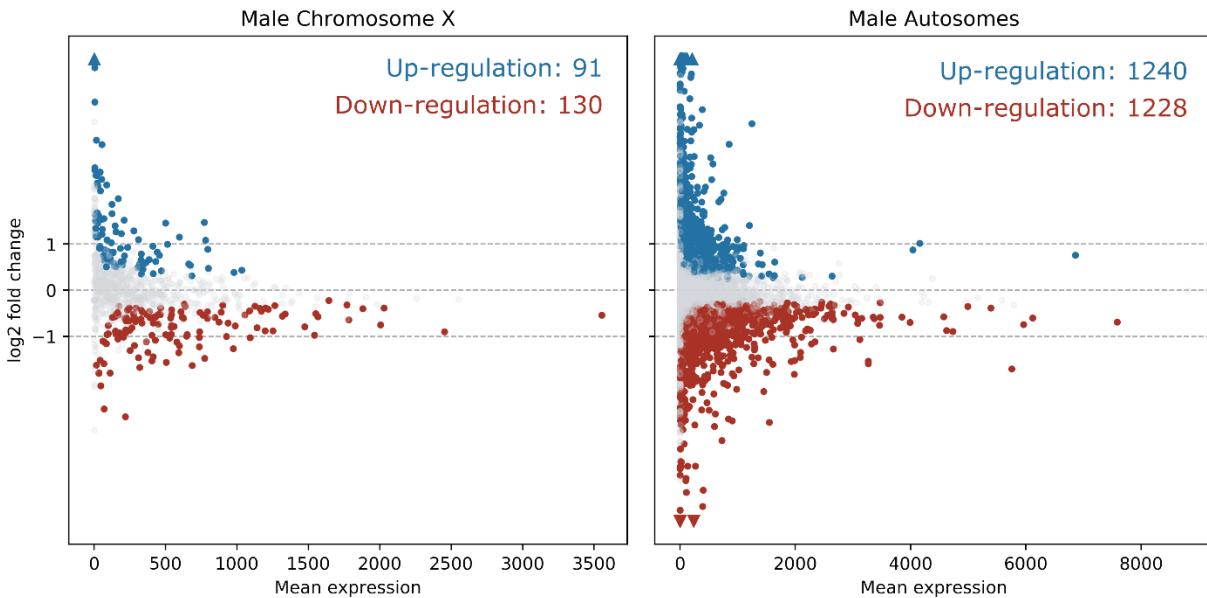


Figure 2-figure supplement 1. X-linked genes are up-regulated in *Guy1* transgenic females from line *nGuy1_1*. MA Plots show differentially expressed genes on the X chromosome and the autosomes in A) *Guy1* transgenic females compared to non-transgenic female siblings, and B) *Guy1* transgenic males compared to non-transgenic male siblings. Each dot represents one gene. Blue dots denote up-regulated genes, red dots denote down-regulated genes, and grey dots are not differentially expressed (BH-adjusted $p > 0.1$). Colored arrows indicate values beyond the range of the plot. Genes are significantly up-regulated on the X chromosome in transgenic females compared to up-regulated genes on the autosomes (A), which is supported by a Chi-square test ($p = 2.20e^{-16}$), compared to males (B) ($p = 2.17e^{-2}$) (see Supplementary File S5).