

Figure 4-figure supplement 3_Benz et al._R1

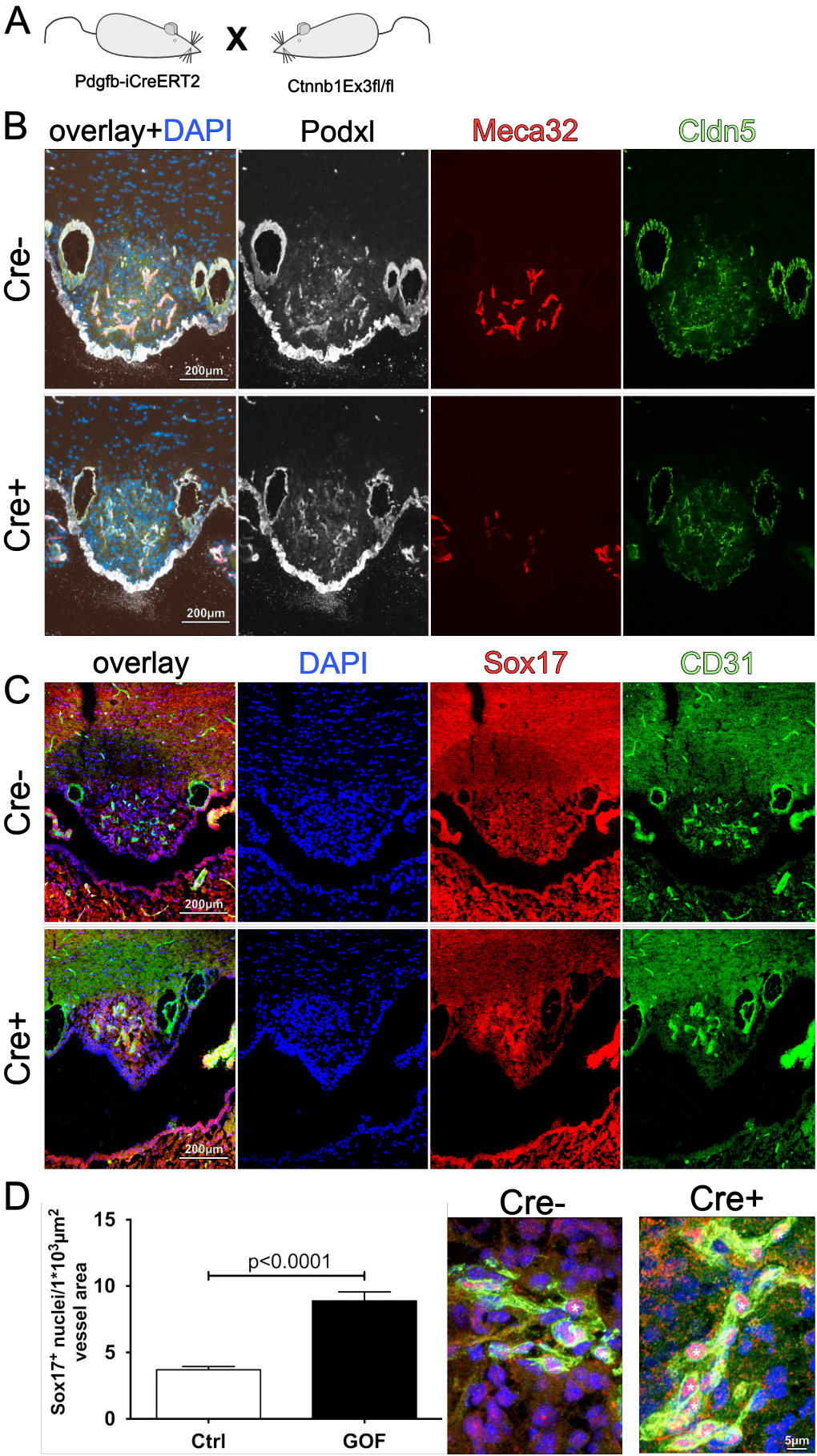


Figure 4-figure supplement 3: *Pdgfb-iCreERT2:Ctnnb1^{fl/wt}* show tightening of subfornical organ (SFO) vasculature. (A) Scheme of used mouse lines. (B) Adult SFO from control (Cre-) and β -catenin GOF (Cre+) mice (C). Overview of Sox17 induction in Cre- and Cre+ mice in the SFO. (D) Quantification (n=3) and a higher magnification of confocal Sox17 staining. Asterisks indicate positive Sox17 staining in endothelial cells. Scale bar 100 μ m; error bars show \pm SEM.