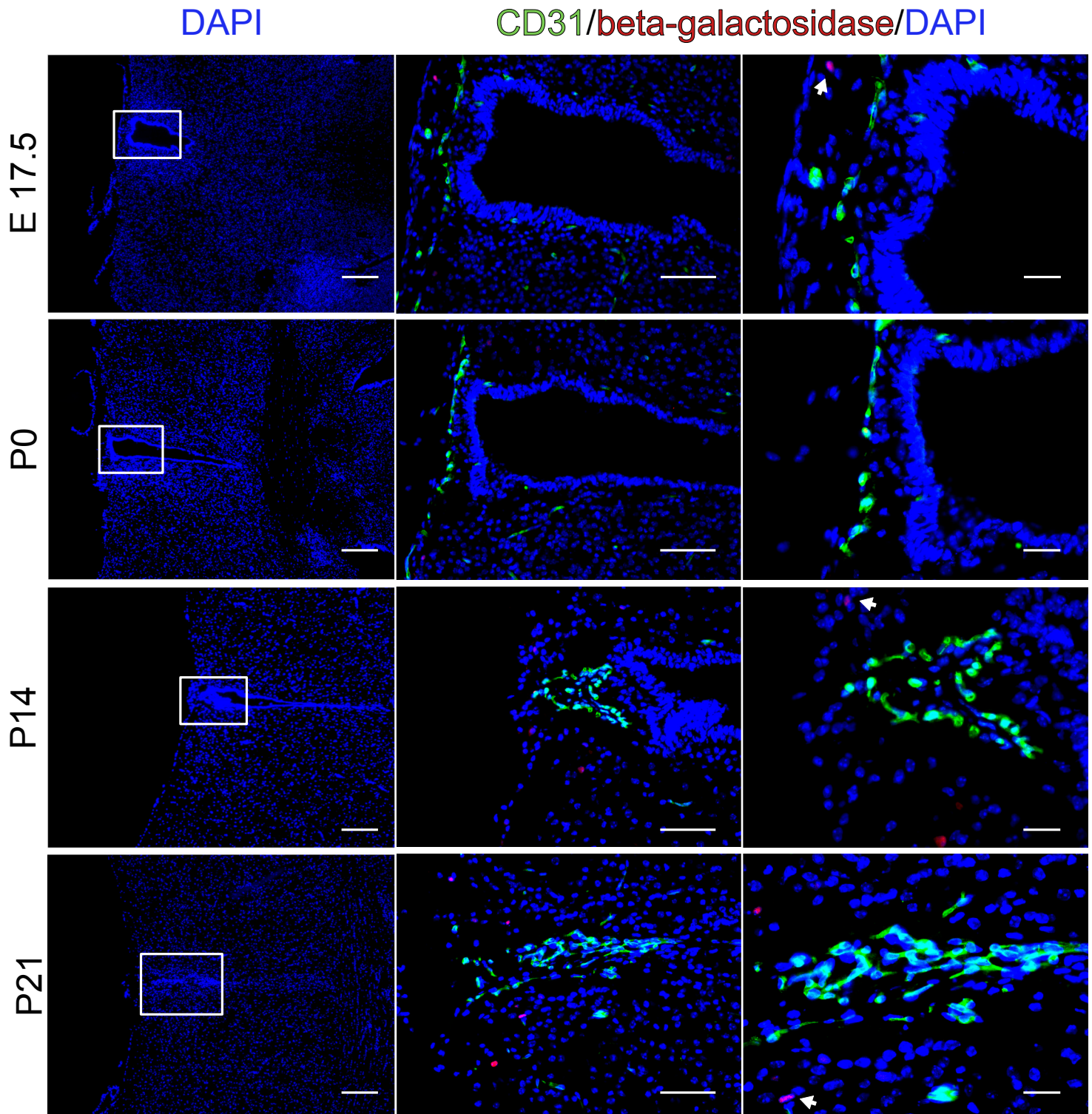


# Figure 1-figure supplement 1\_Benz et al.\_R1



**Figure 1-figure supplement 1: No endothelial  $\beta$ -catenin signaling in the organum vasculosum of the lamina terminalis (OVLT) during development.** OVLT from E17.5 - P21 of BAT-gal reporter mice. Arrows point to  $\beta$ -galactosidase-positive nuclei in non-endothelial cells. Scale bar: left (200  $\mu$ m), middle (50  $\mu$ m), right column (20  $\mu$ m).