

Figure 4-figure supplement 1_Benz et al._R1

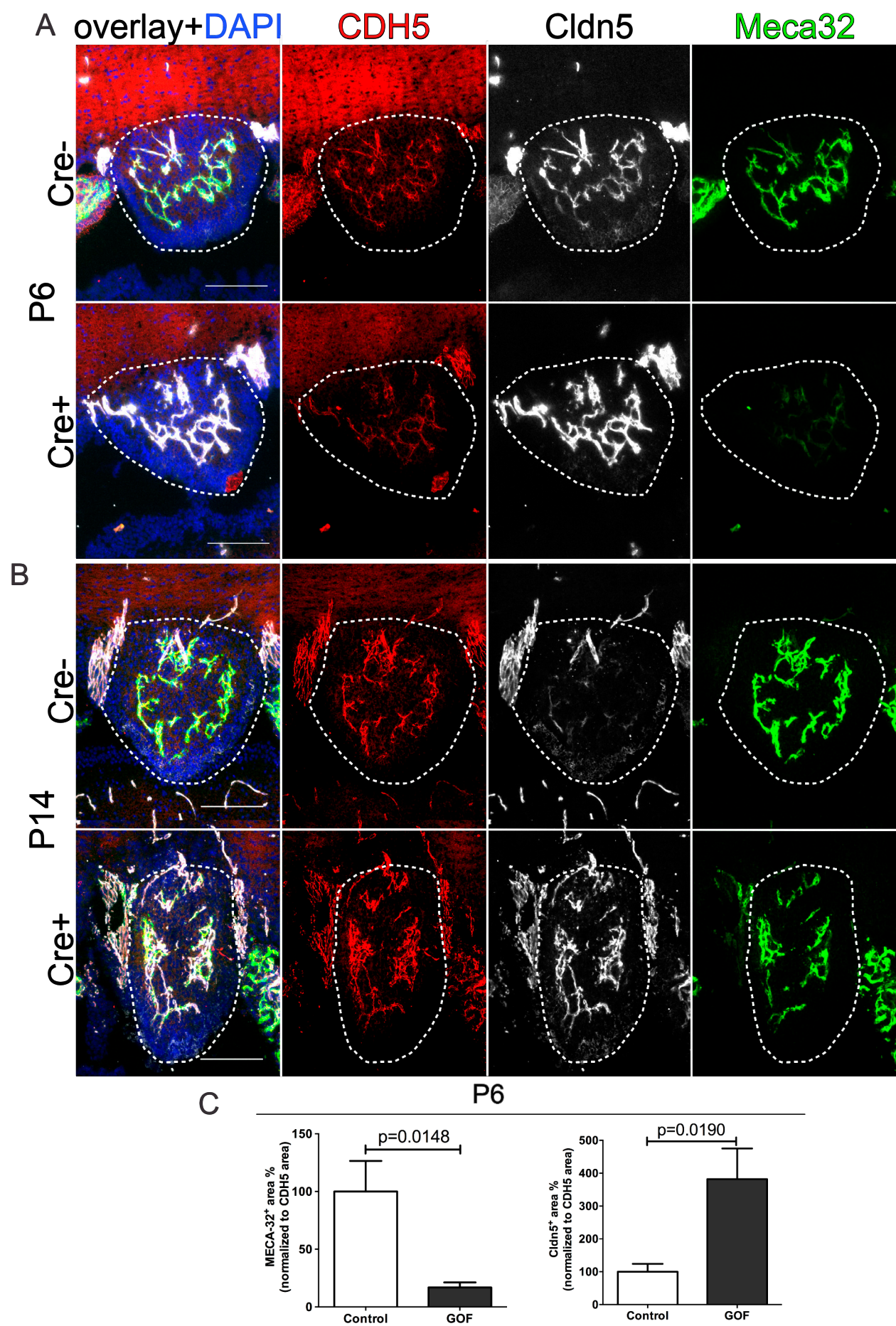


Figure 4-figure supplement 1: Tightening of subfornical organ (SFO) vessels at early postnatal stages. (A) Cre recombinase of *Cdh5*(PAC)-CreERT2:*Ctnnb1*^{Ex3fl/fl} was induced by tamoxifen injection (TAM) from P0 to P3. Analysis of *Cldn5* and *Plvap*/*Meca32* at P6 (A) and P14 (B) and the resulting quantification (for P6) of marker area normalized to *Cdh5* area (C) (n=3; a.u., arbitrary units). Scale bar 100 μ m; error bars show \pm SEM.