

Figure 5-figure supplement 1_Benz et al._R1

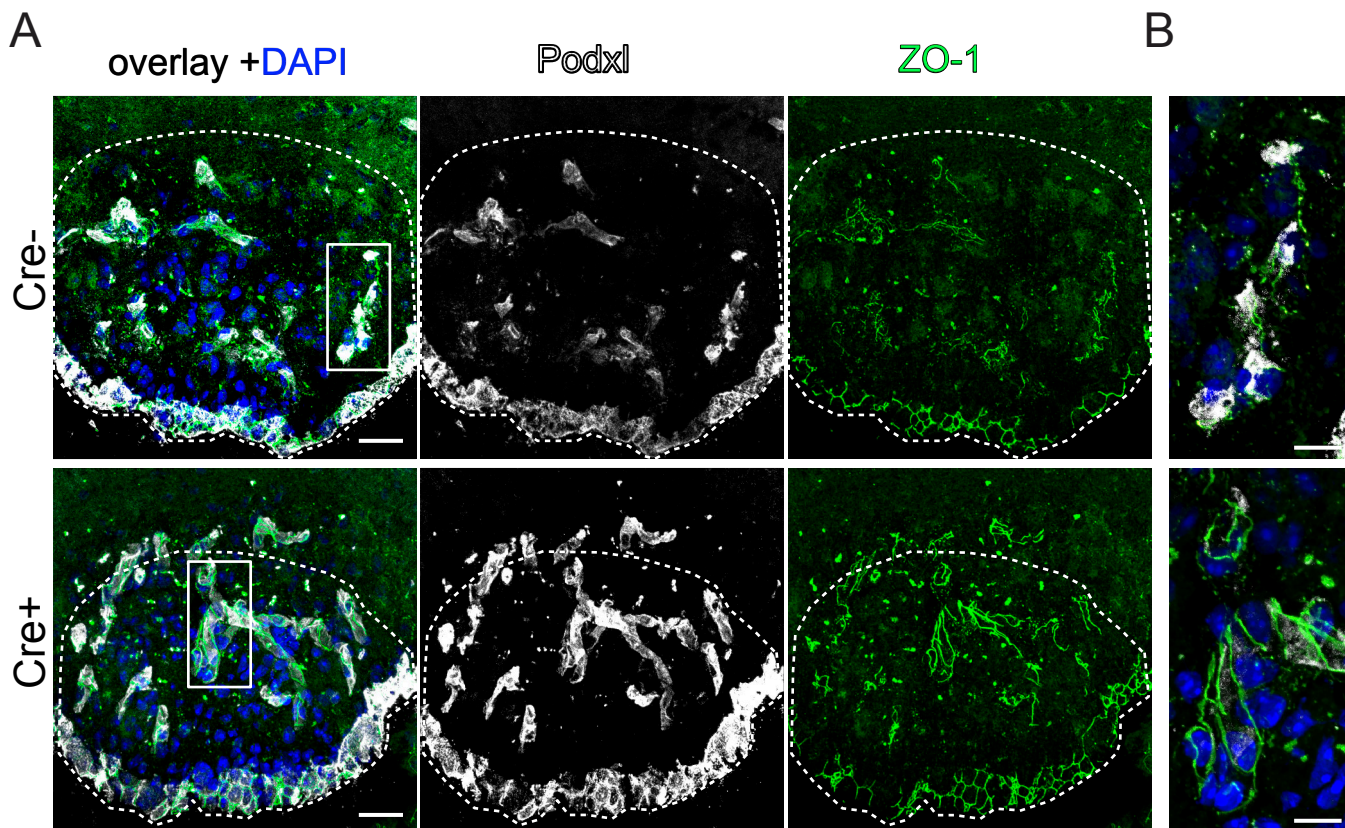


Figure 5-figure supplement 1: Endothelial-specific β -catenin GOF did not lead to an evident increase in ZO-1 localization at cell-cell junctions in the vasculature of the subfornical organ (SFO). Coronal view of the subfornical organ (SFO) 26 days after the first TAM injection stained for podocalyxin as a vascular/luminal marker, ZO-1 and DAPI (**A**). Higher magnification of an SFO vessel indicated by the rectangular inset in A (**B**). Dashed line demarcates the SFO. Scale bars: 25 μ m (**A**), 10 μ m (**B**).