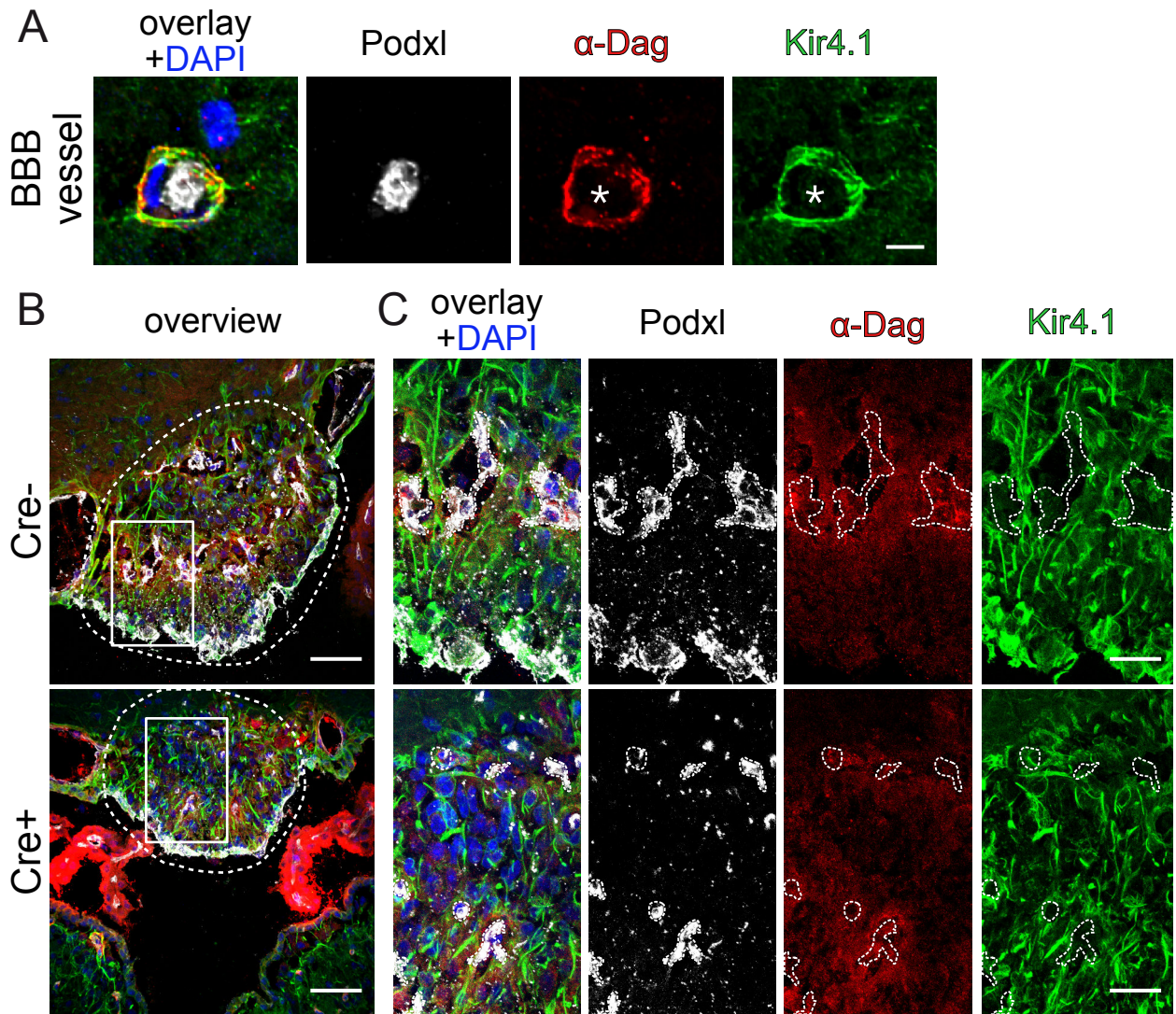


# Figure 7-figure supplement 1\_Benz et al.\_R1



**Figure 7-figure supplement 1: Endothelial  $\beta$ -catenin GOF does not affect astrocytic endfoot polarization of  $\alpha$ -dystroglycan ( $\alpha$ -Dag) and Kir4.1 within the subfornical organ (SFO).** Striatal BBB-vessel showing a polarized distribution of  $\alpha$ -Dag and Kir4.1 in AC endfeet. Lumen is stained by Podxl (asterisk) (A). Coronal overview of the subfornical organ (SFO) (B); rectangular inset demarcates area for higher magnification in (C). Dashed lines outline SFO vessels. Scale bar show 2  $\mu$ m (A), 50  $\mu$ m (B), 10  $\mu$ m (C).