

Figure 7-figure supplement 2_Benz et al._R1

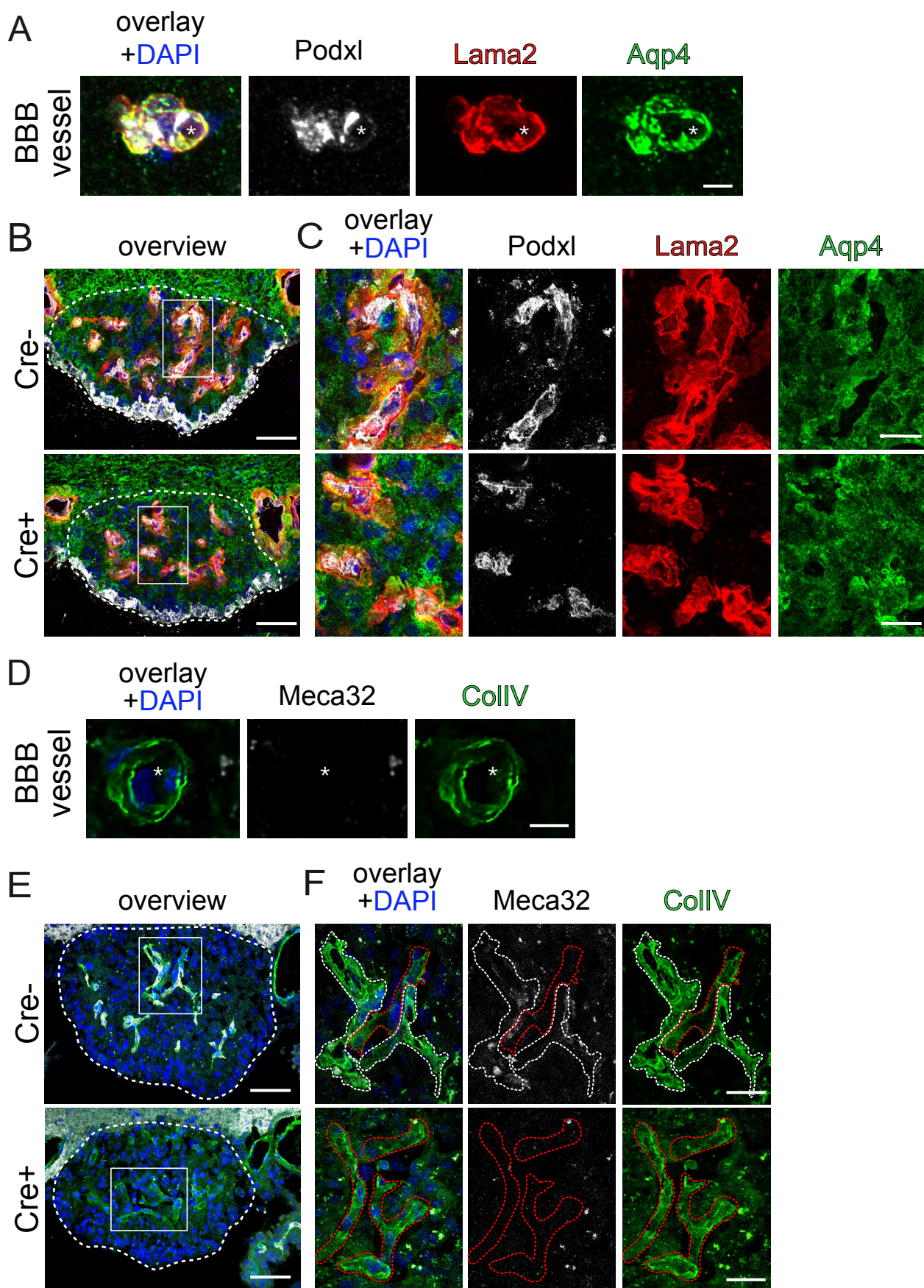


Figure 7-figure supplement 2: Endothelial β -catenin GOF does not affect the ECM of astrocytic endfeet and ECs within the subfornical organ (SFO). Striatal BBB-vessel showing a polarized distribution of Lama2 and Aqp4 in AC endfeet. Lumen is stained by Podxl (asterisk) (A). Coronal overview of the subfornical organ (SFO) (B); rectangular inset demarcates area for higher magnification in (C). Striatal BBB-vessel showing a polarized distribution of ColIV (green) but no Meca32 (white) in ECs (D). Coronal overview SFO, rectangular inset demarcates area for higher magnification in F (E); white dashed lines show Meca32⁺, red dashed lines show Meca32⁻ vessels (F). Dashed lines outline SFO vessels; scale bars show 2 μ m (A), 50 μ m (B), 10 μ m (C), 2.5 μ m (D), 50 μ m (E), 10 μ m (F).