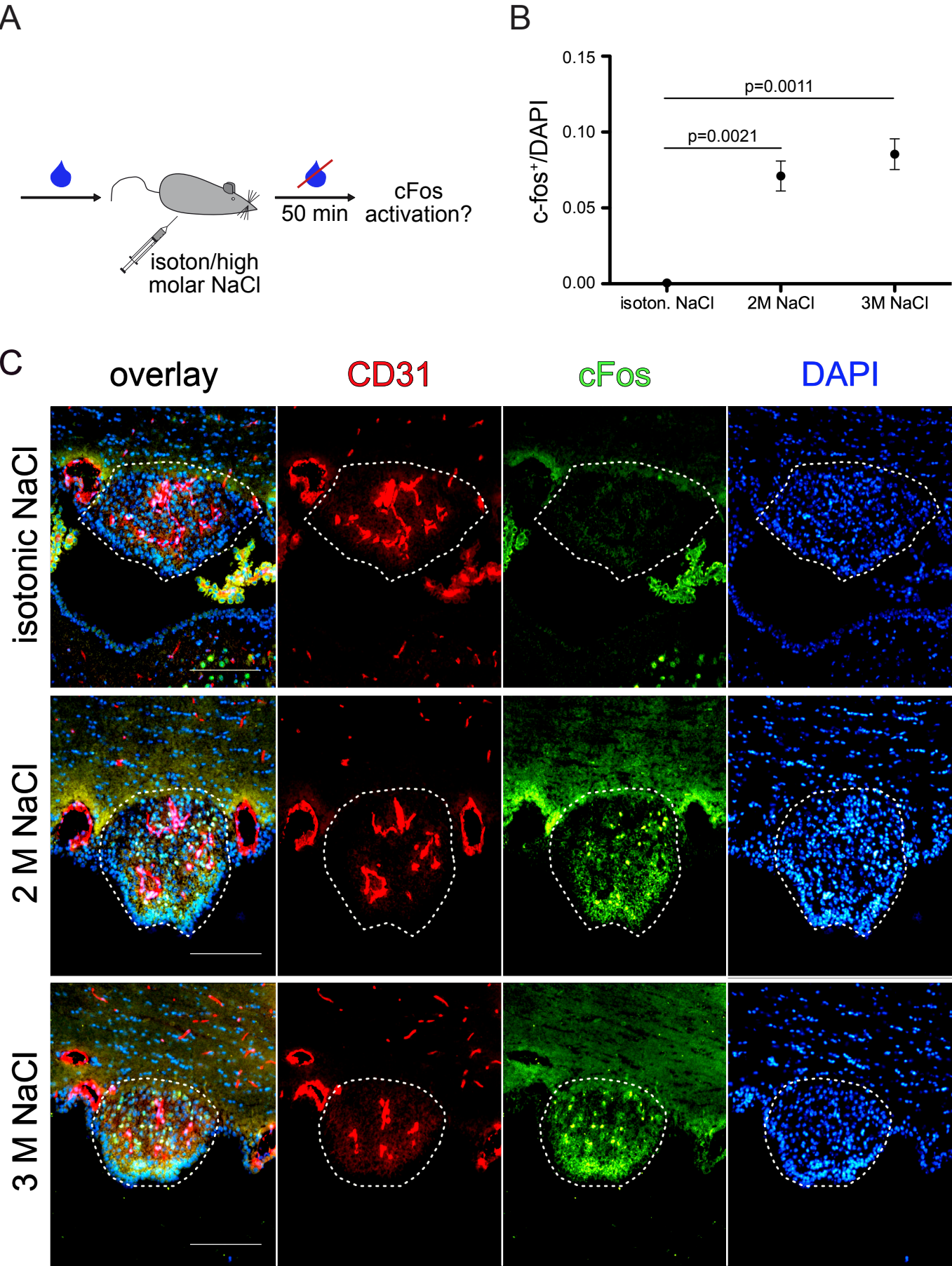


Figure 8-figure supplement 1\_Benz et al.\_R1



**Figure 8-figure supplement 1: Dose dependent neuronal activity upon sodium chloride injection.** Experimental setting of hyperosmolar sodium chloride injection (**A**). Animals received i.p. injections (150  $\mu$ l/20 g mouse) of either isotonic (0.15 M), 2 M or 3 M sodium chloride solution. After 50 minutes in the absence of water, the SFO was analyzed for c-fos (**C**) and quantified (**B**) (n=3 per group). Raw data is presented in the additional source data file. Scale bars: 100  $\mu$ m; error bars show  $\pm$ SEM.