

Figure 1 - figure supplement 1

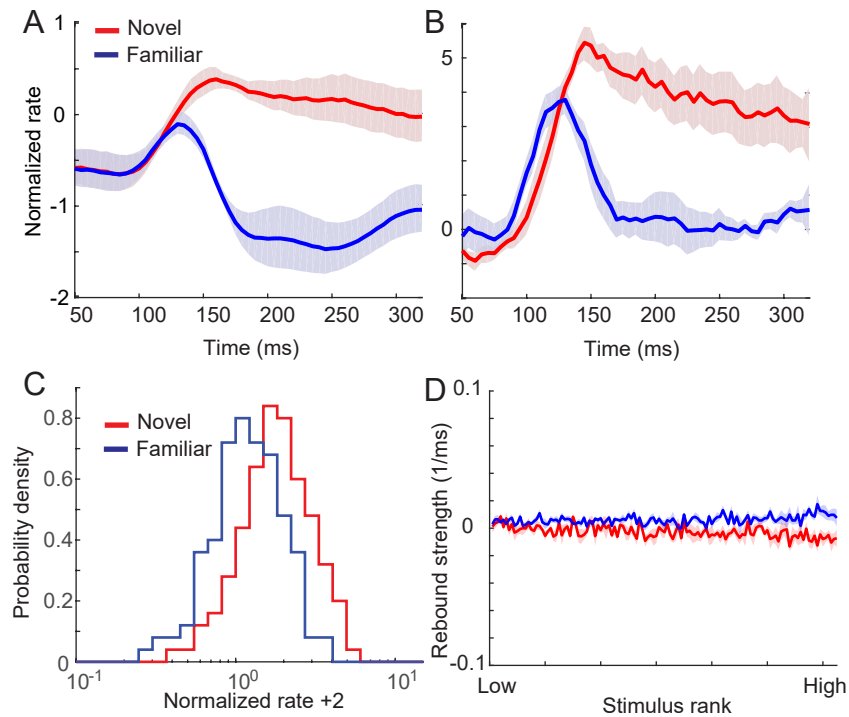


Figure 1 – figure supplement 1. Changes in response dynamics of putative inhibitory neurons with learning in a passive viewing task (Woloszyn & Sheinberg, 2012). (A, B) Average (A) and maximal (B) response to familiar (blue) and novel (red) stimuli. (C) Distributions of time-averaged activities. (D) Rebound strengths in inhibitory neurons before and after learning. Activities and rebound strengths were quantified in the same manner as in the excitatory neurons in Fig. 1.