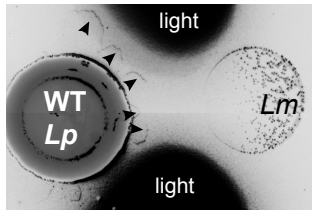
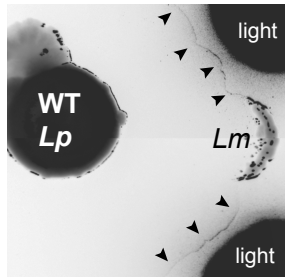
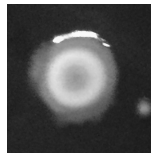
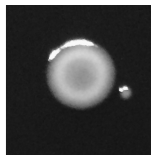
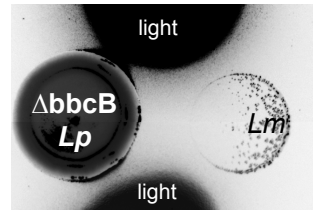


**A****B**

WT  
*Lp*



$\Delta$ *bbcB*  
*Lp*

**C**

**Figure 1-figure supplement 1.** Separation of surfactant and antimicrobial phenotypes.

**A)** *Lm* inhibition sometimes co-occurs with contact with WT *Lp*'s secreted surfactant (left), but sometimes is observable outside of the surfactant front (right). The leading edge of the surfactant front (arrowheads) is faintly visible when light is reflected off adjacent regions of the plate ("light"). Each image is a composite of two fields of view, with inverted colors to enable visualization of the surfactant front. **B)** Lack of surfactant production from *Lp* with a deletion of *bbcB*, evident by a defect in spreading on BCYE plates. **C)** The *bbcB* mutant can inhibit the growth of neighboring *Lm*, despite lacking surfactant secretion.