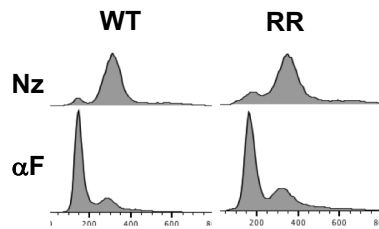
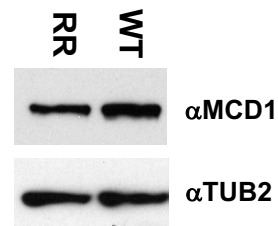


A**B**

Characterization of fusion wild-type and *smc3-K112R K113R* (RR) mutations. Strains with fusion cohesin or RR fusion cohesin in figure 4 were grown treated as described. (A) FACS to confirm arrest of cells. (B) Smc3p-Mcd1p fusion levels in mid-M arrested cells. Protein extracts from mid-M phase cells were analyzed by Western Blot. Smc3-Mcd1p fusion protein levels were monitored using rabbit anti-Mcd1p antibodies (αMCD1) and rabbit anti-tubulin for a loading control (αTUB2).