

Extended supplement – uncropped immunoblots

Figure 1B

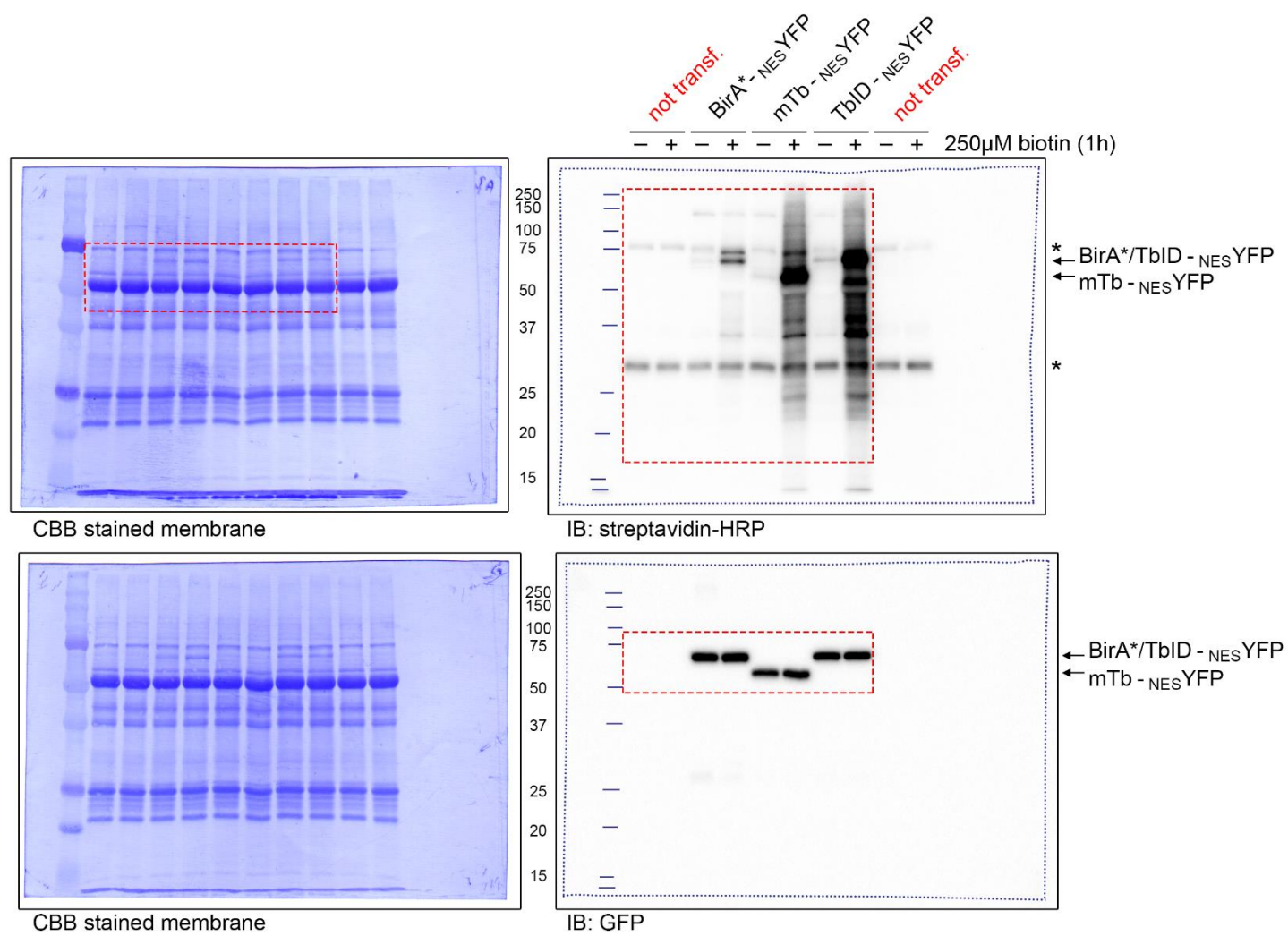


Figure 1C

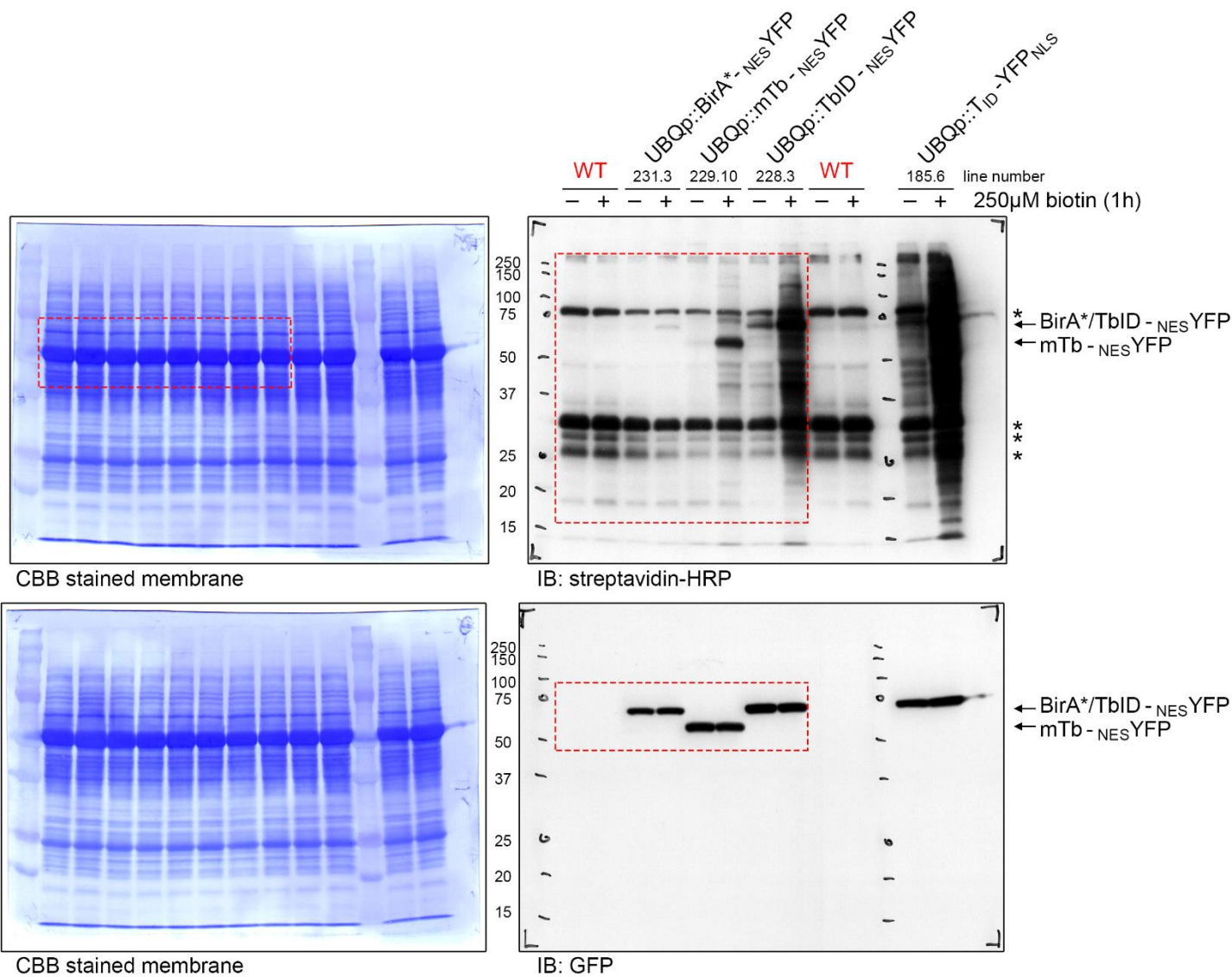


Figure 1 – figure supplement 1

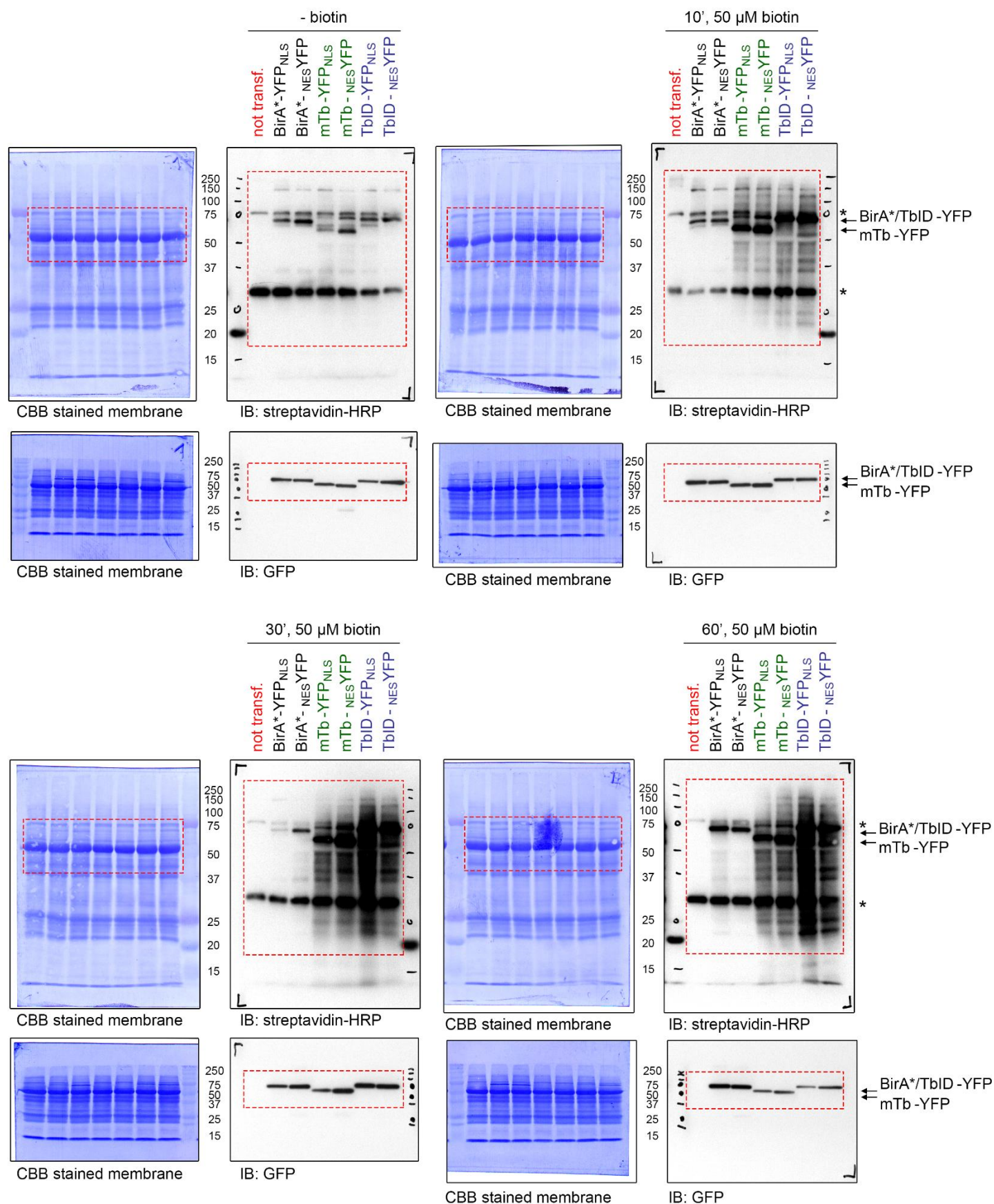


Figure 1 – figure supplement 3

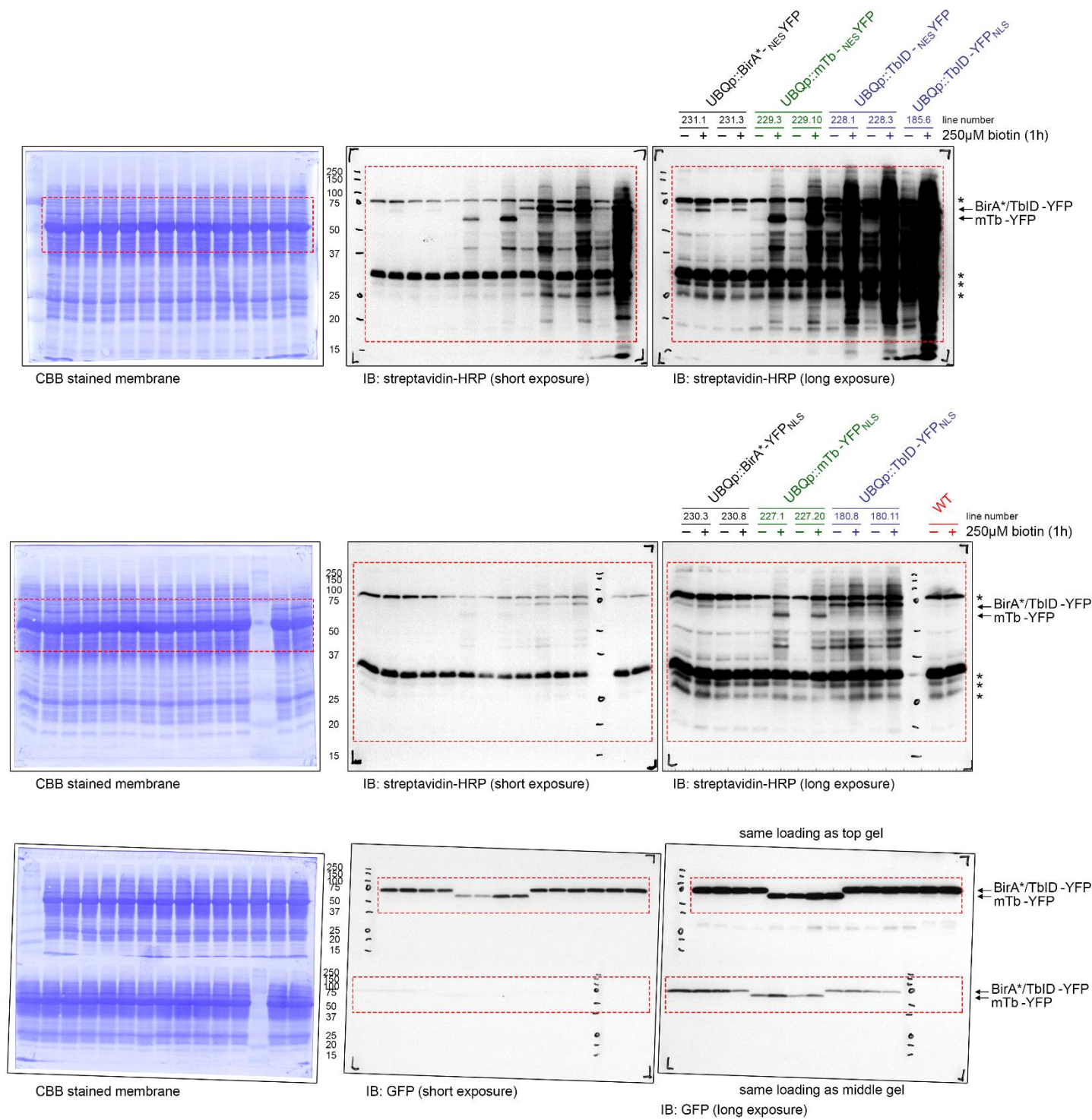


Figure 2A

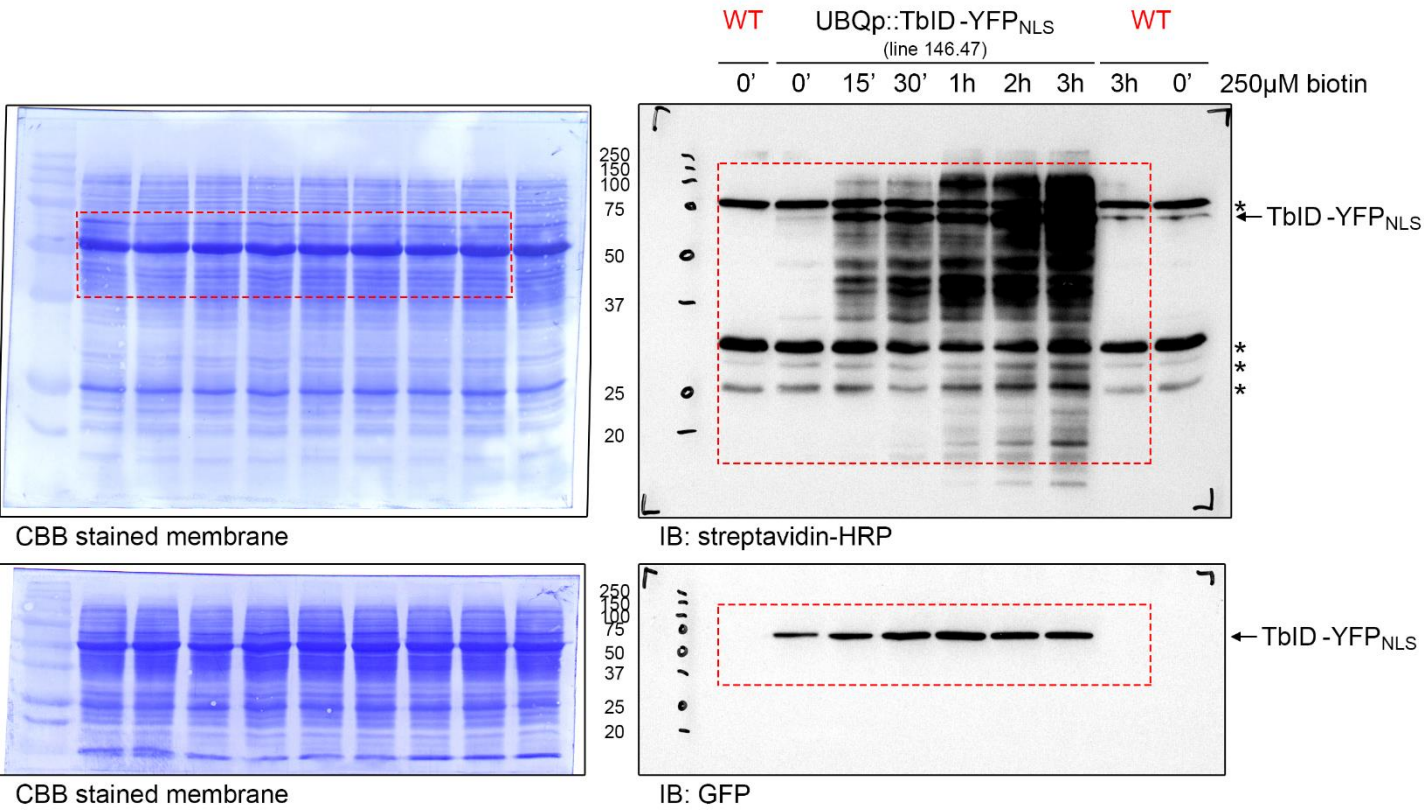


Figure 2B

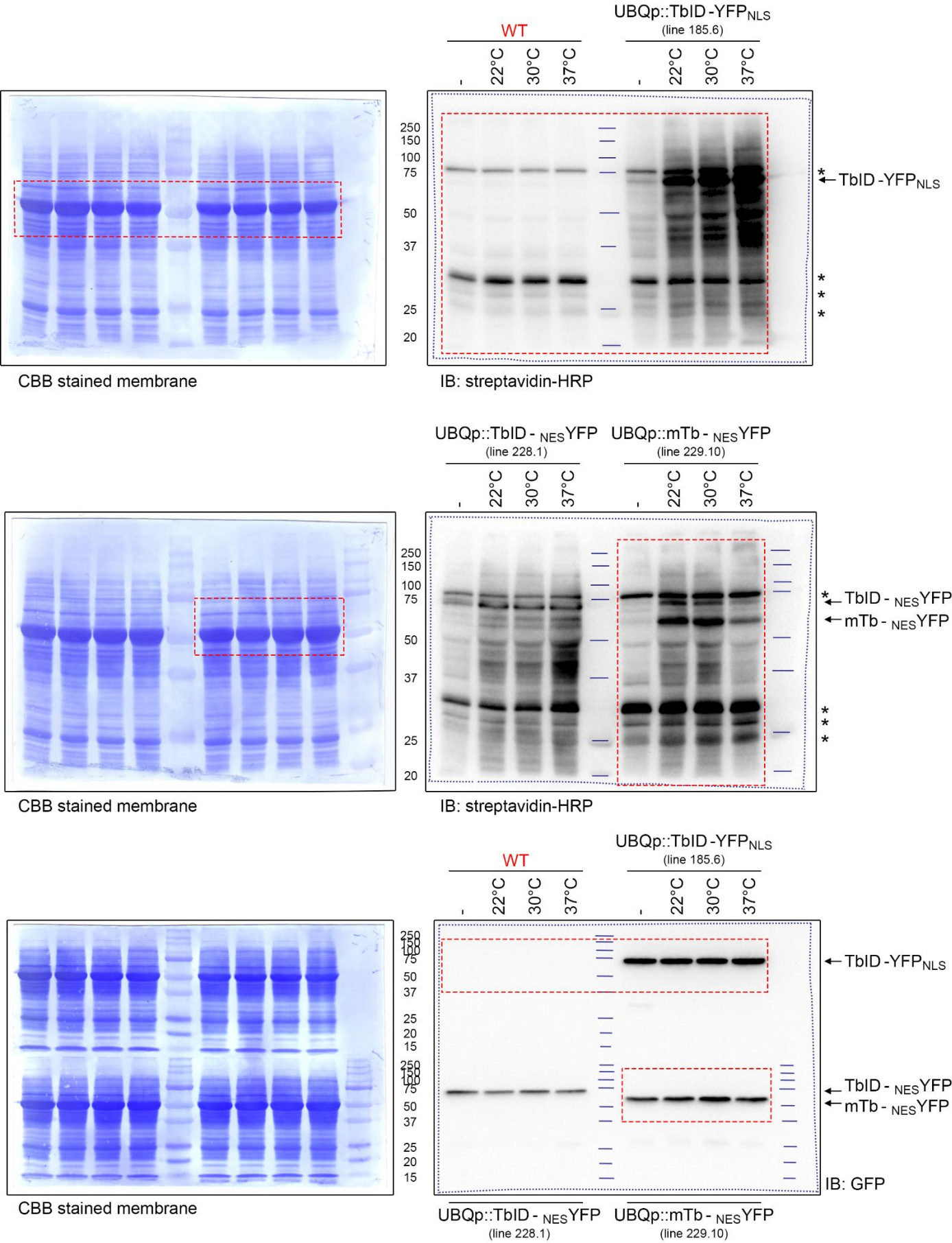


Figure supplement – uncropped immunoblots: page 6

Figure 2C and Figure 2 – figure supplement 3

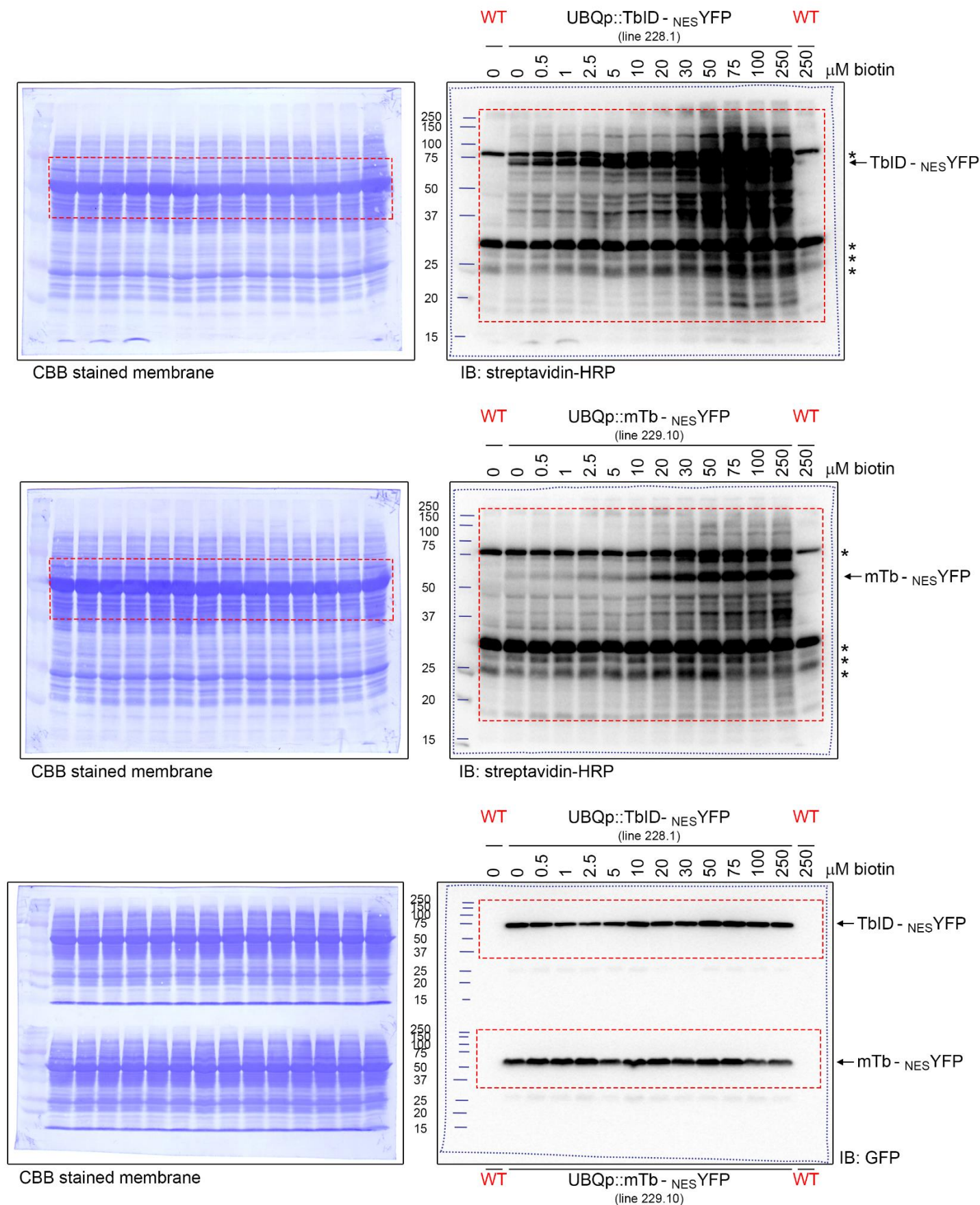


Figure 2D

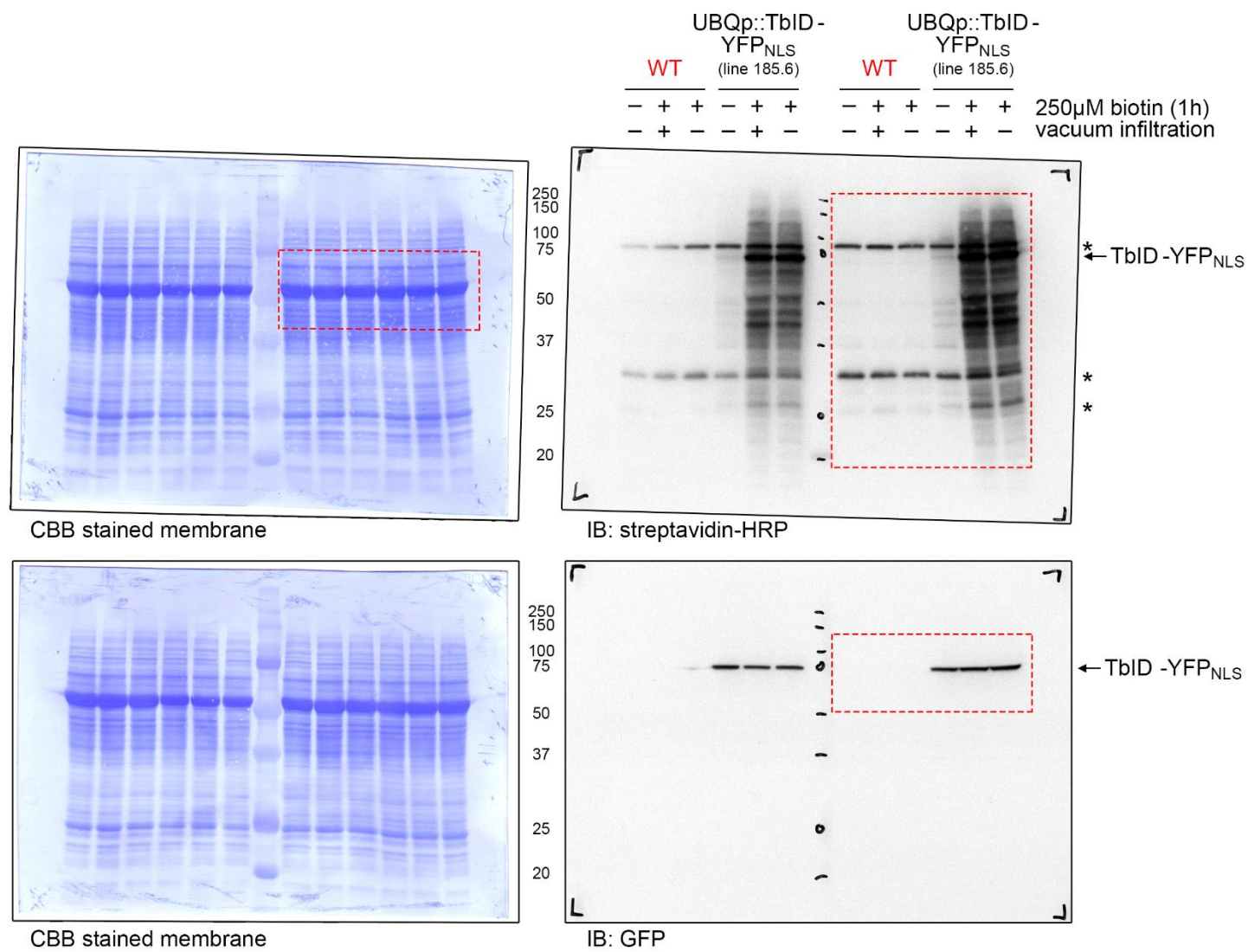


Figure 2 – figure supplement 1

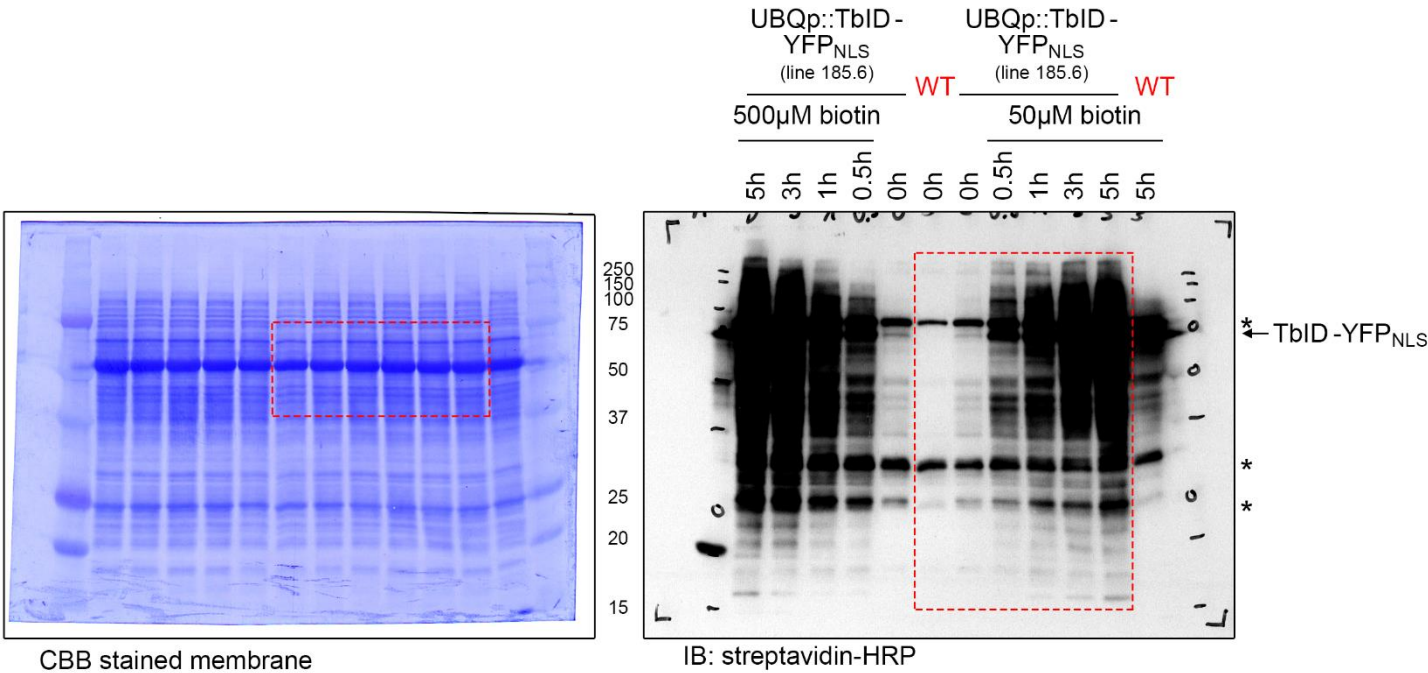
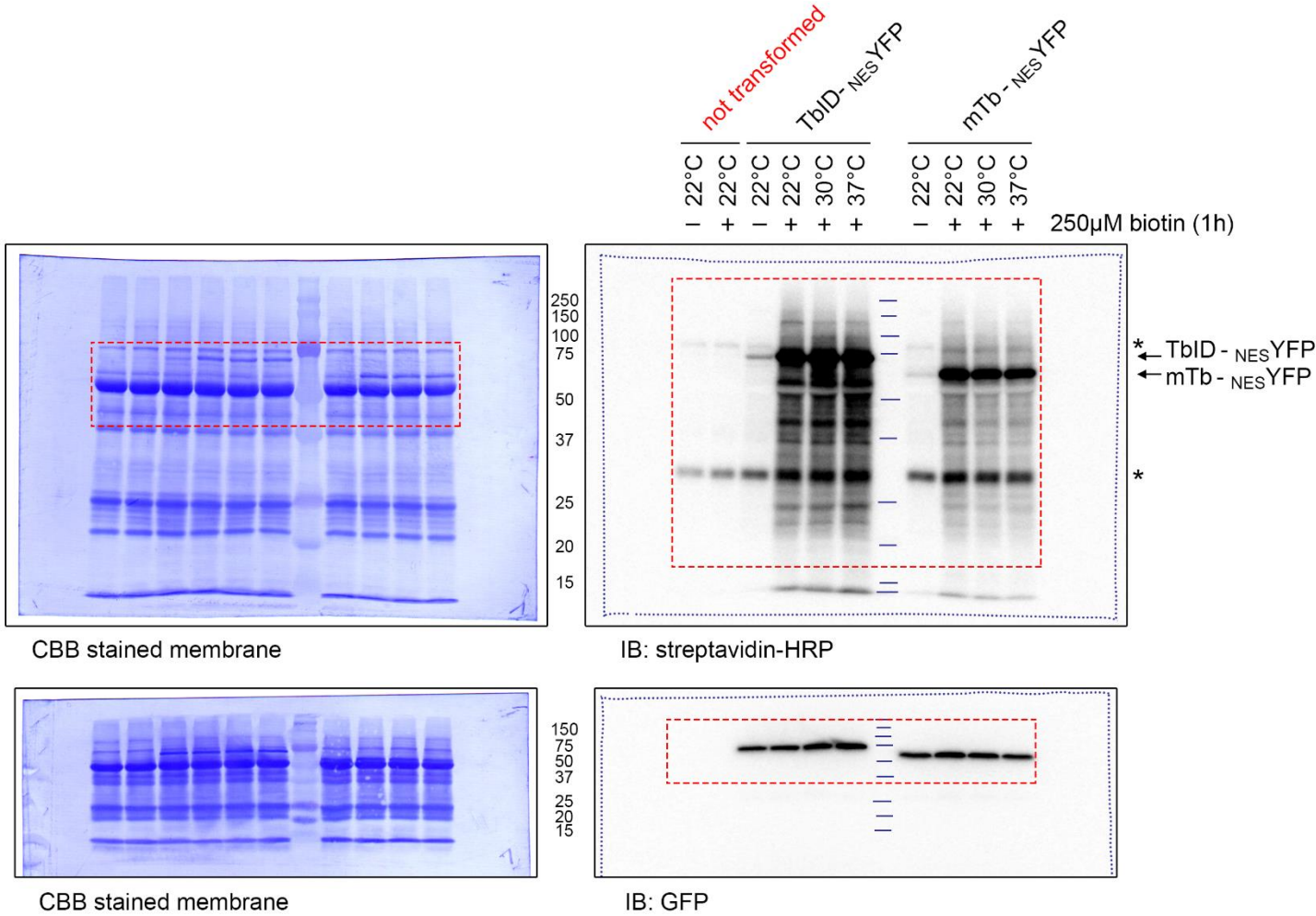


Figure 2 – figure supplement 2



seedling root

CBB stained membrane

IB: streptavidin-HRP

IB: GFP

UbqP::TbID-YFP-NLS (line 185.6)

WT

250µM biotin (1h) vacuum infiltration

UbqP::TbID-YFP-NLS (line 185.6)

WT

250µM biotin (1h) vacuum infiltration

mature leaf

CBB stained membrane

IB: streptavidin-HRP

IB: GFP

UbqP::TbID-YFP-NLS (line 185.6)

WT

250µM biotin (1h) vacuum infiltration

UbqP::TbID-YFP-NLS (line 185.6)

WT

250µM biotin (1h) vacuum infiltration

Figure 3 – figure supplement 1

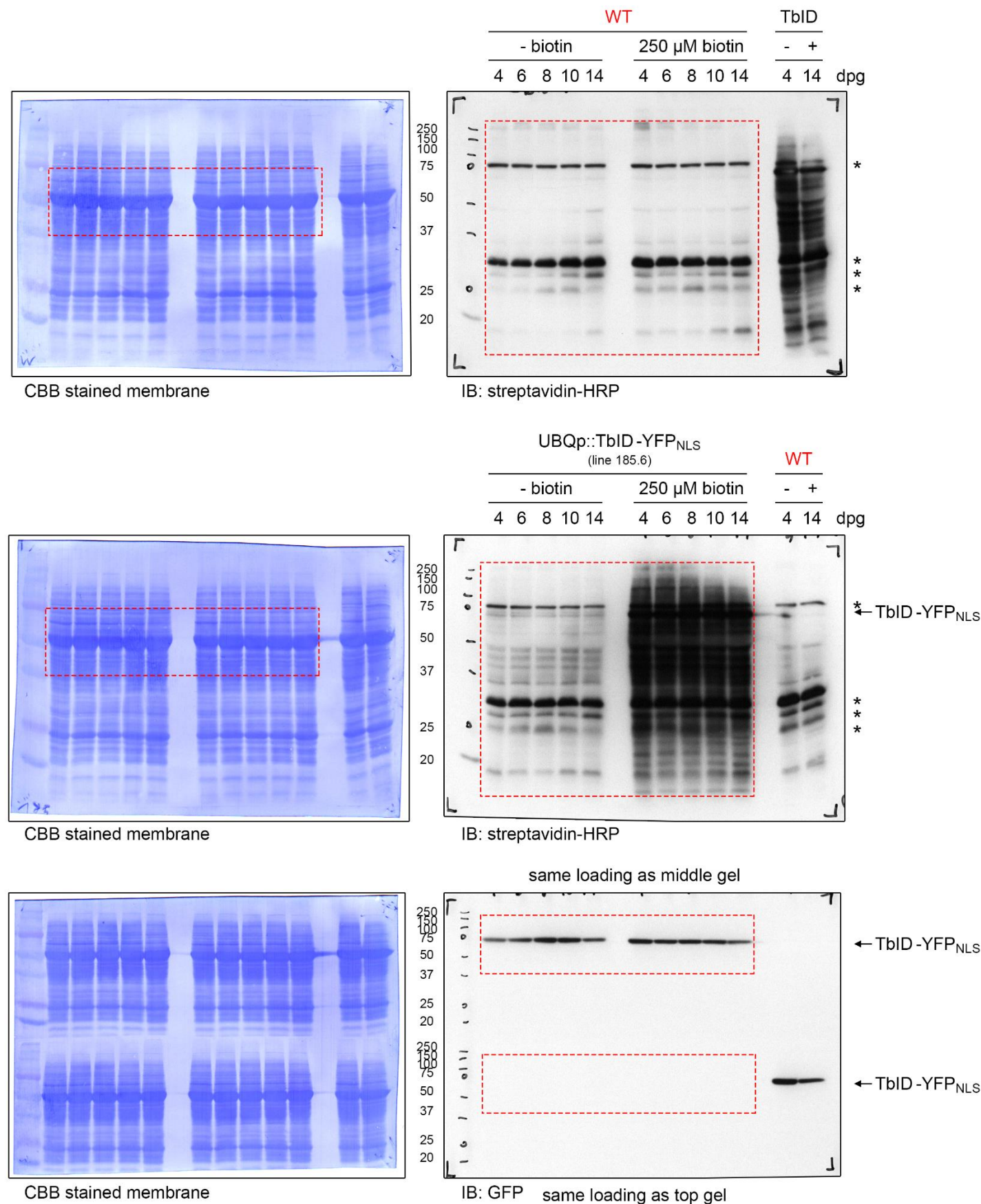


Figure 3 – figure supplement 2

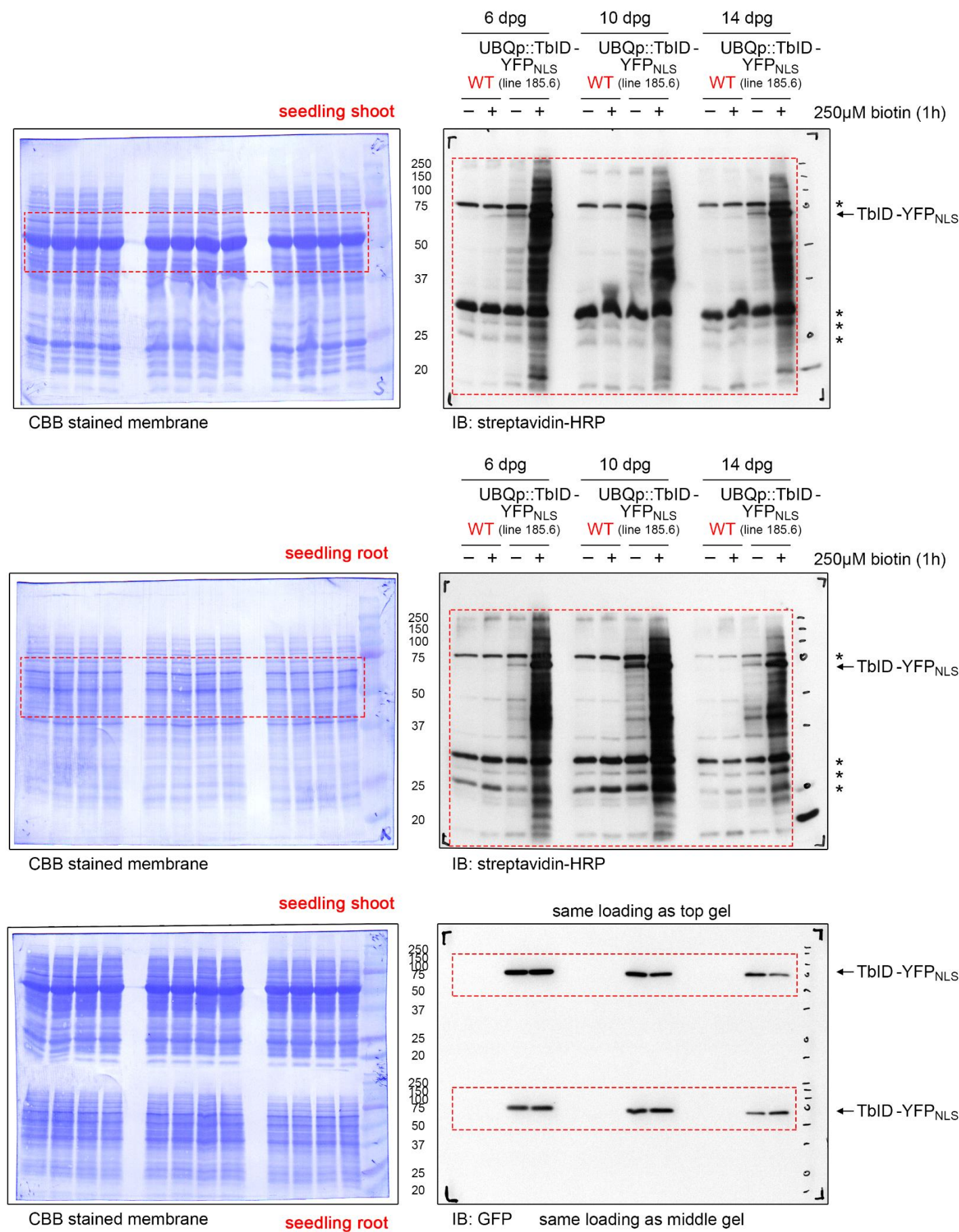


Figure 4B

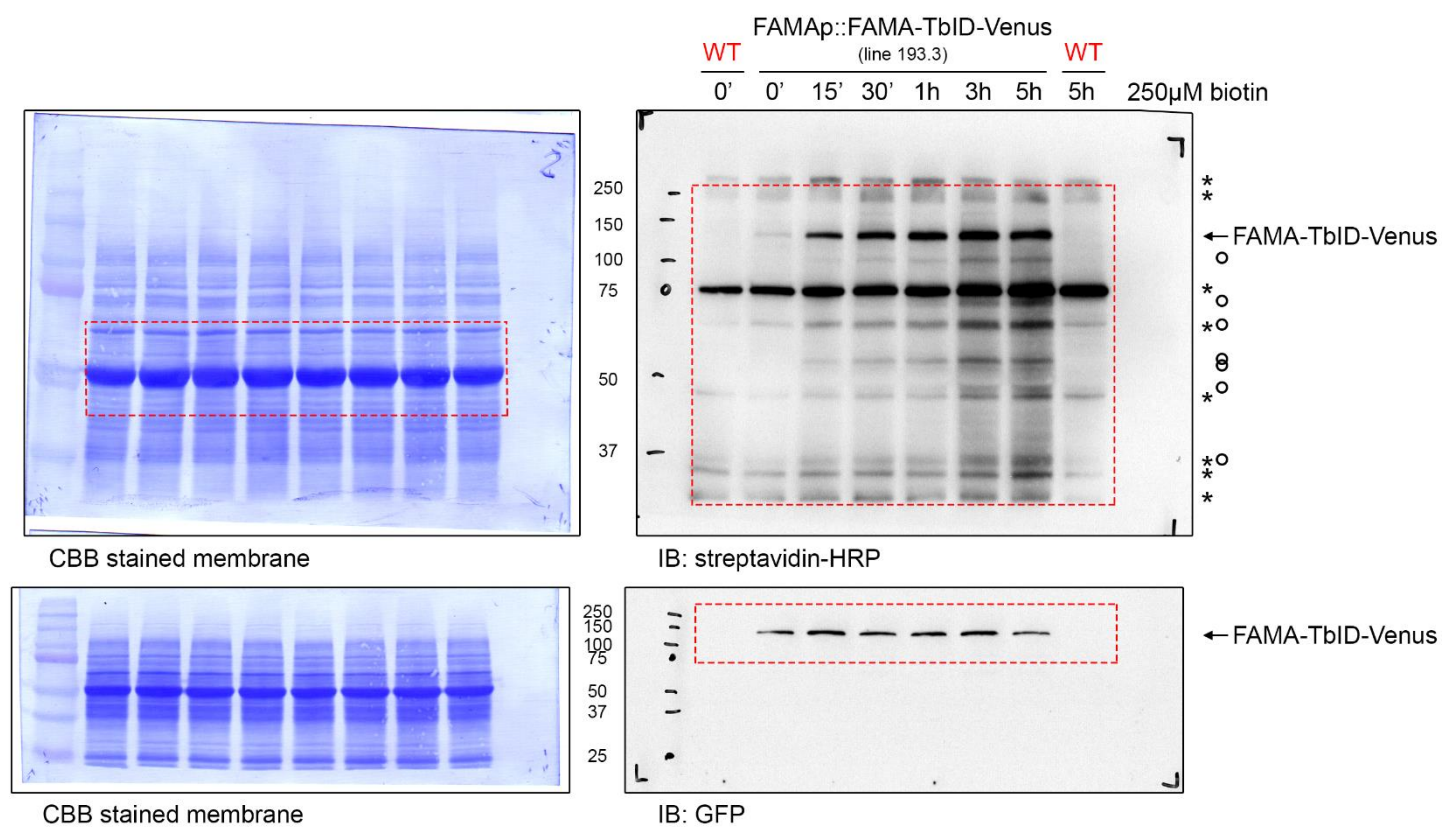


Figure 4 – figure supplement 3

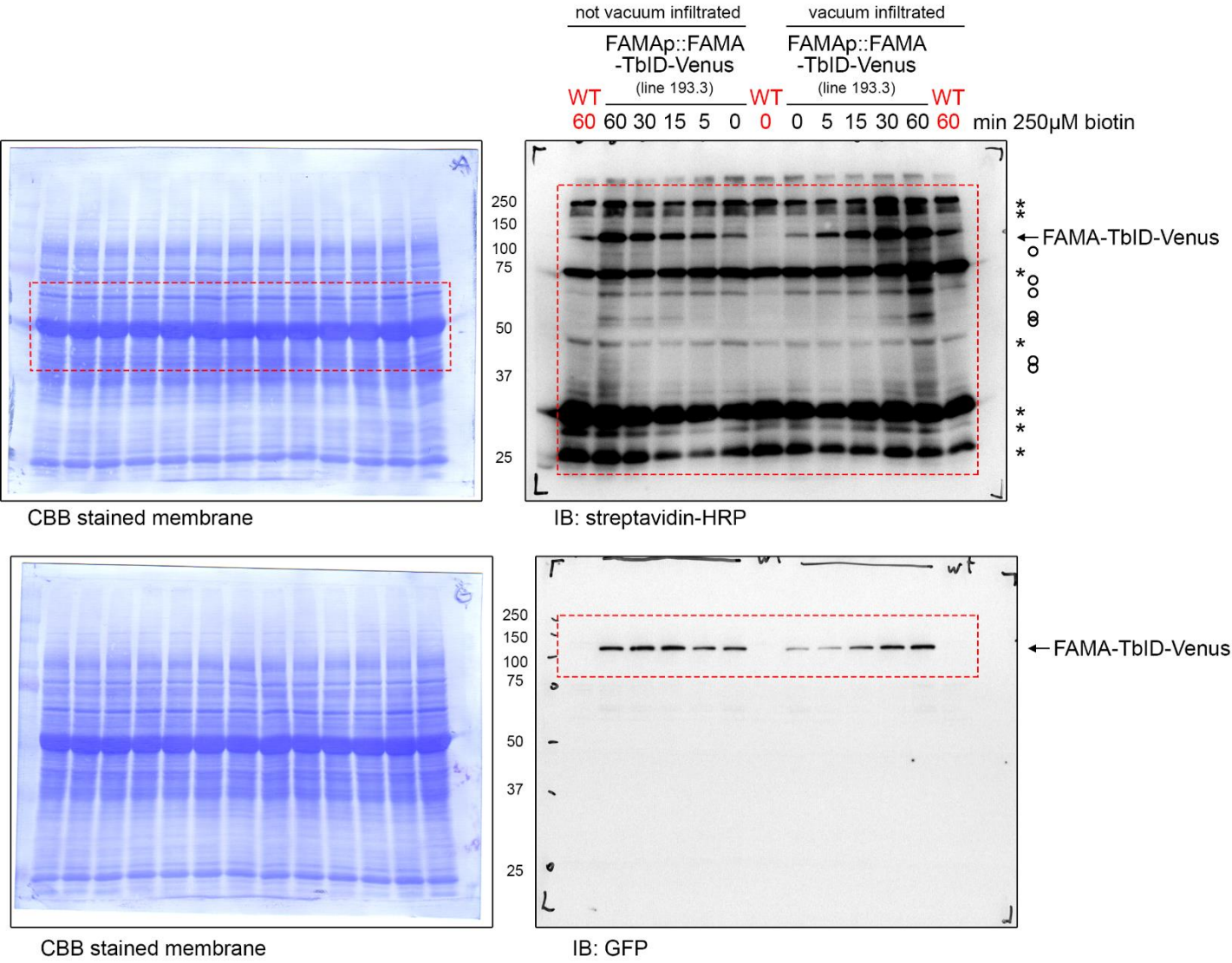


Figure 4 – figure supplement 4

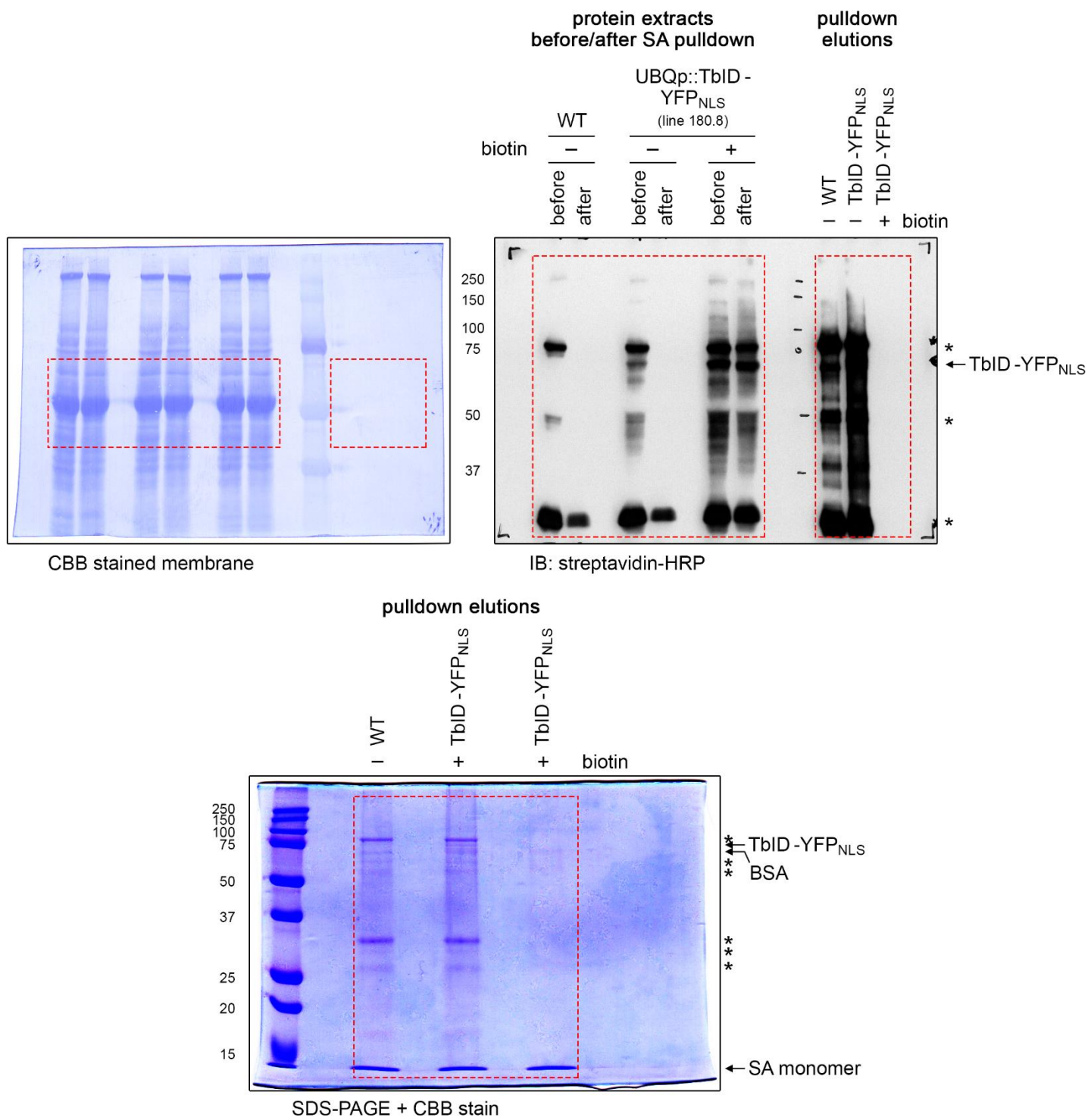


Figure 4 – figure supplement 5

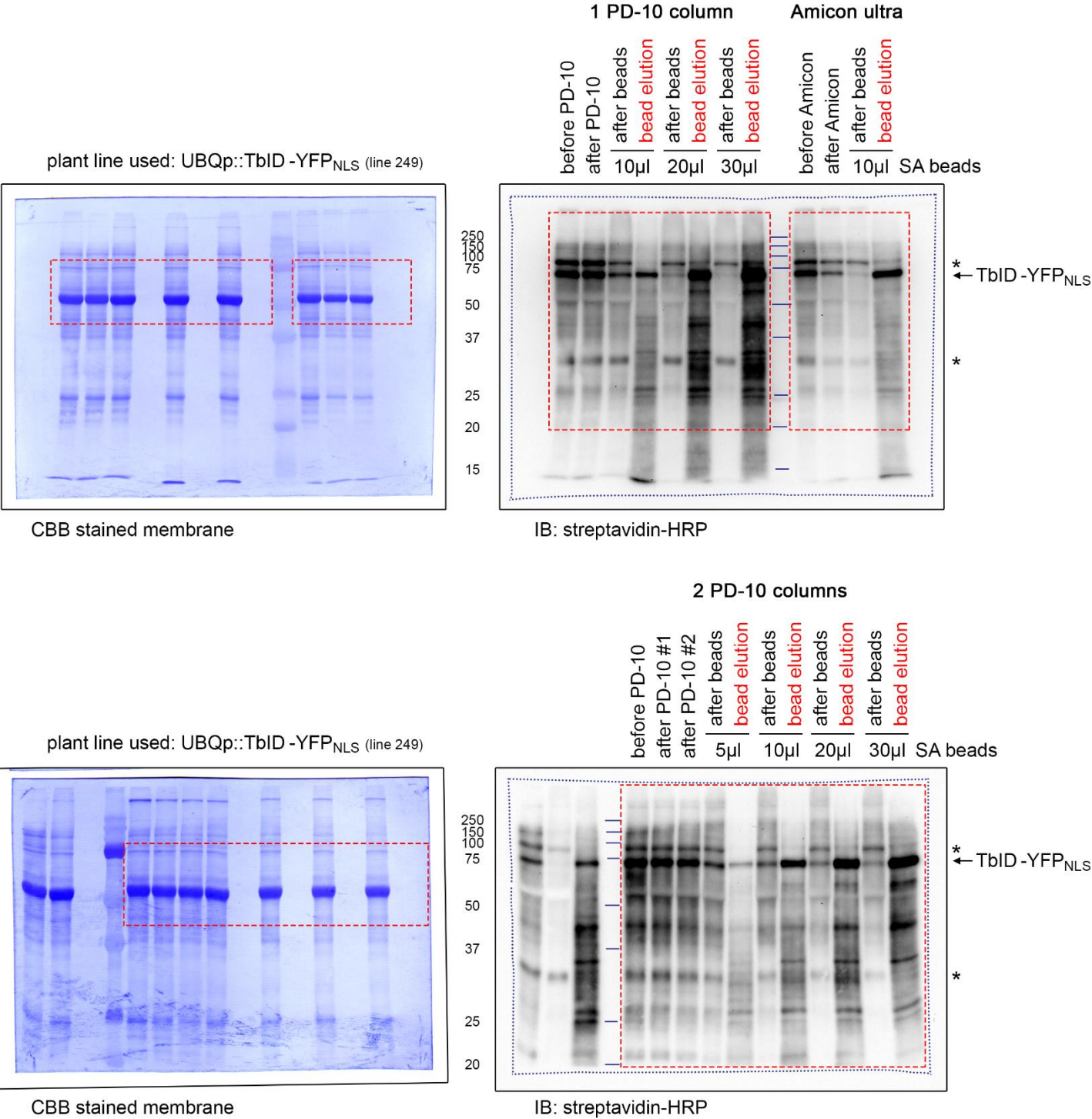


Figure 4 – figure supplement 6

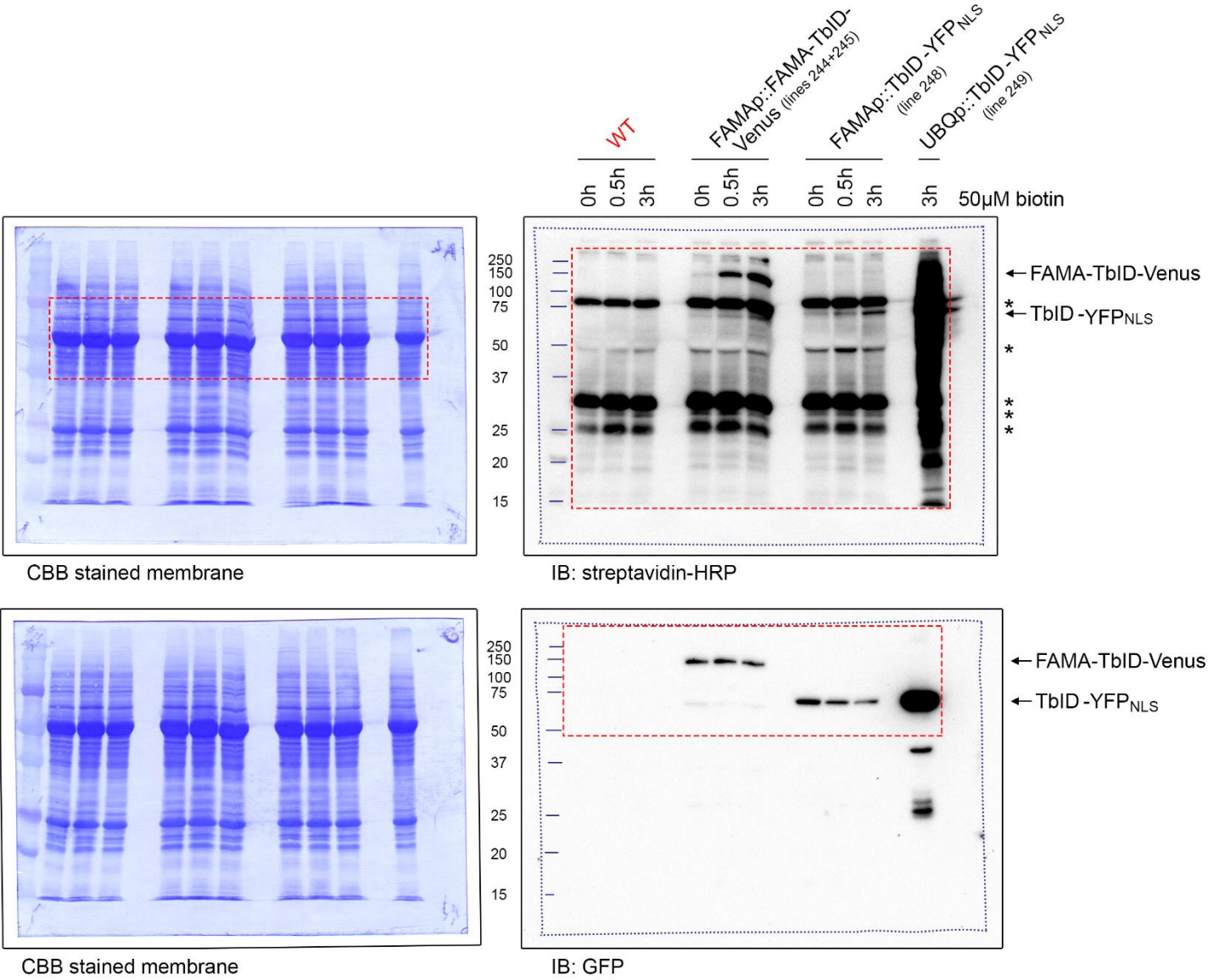


Figure 4 – figure supplement 7

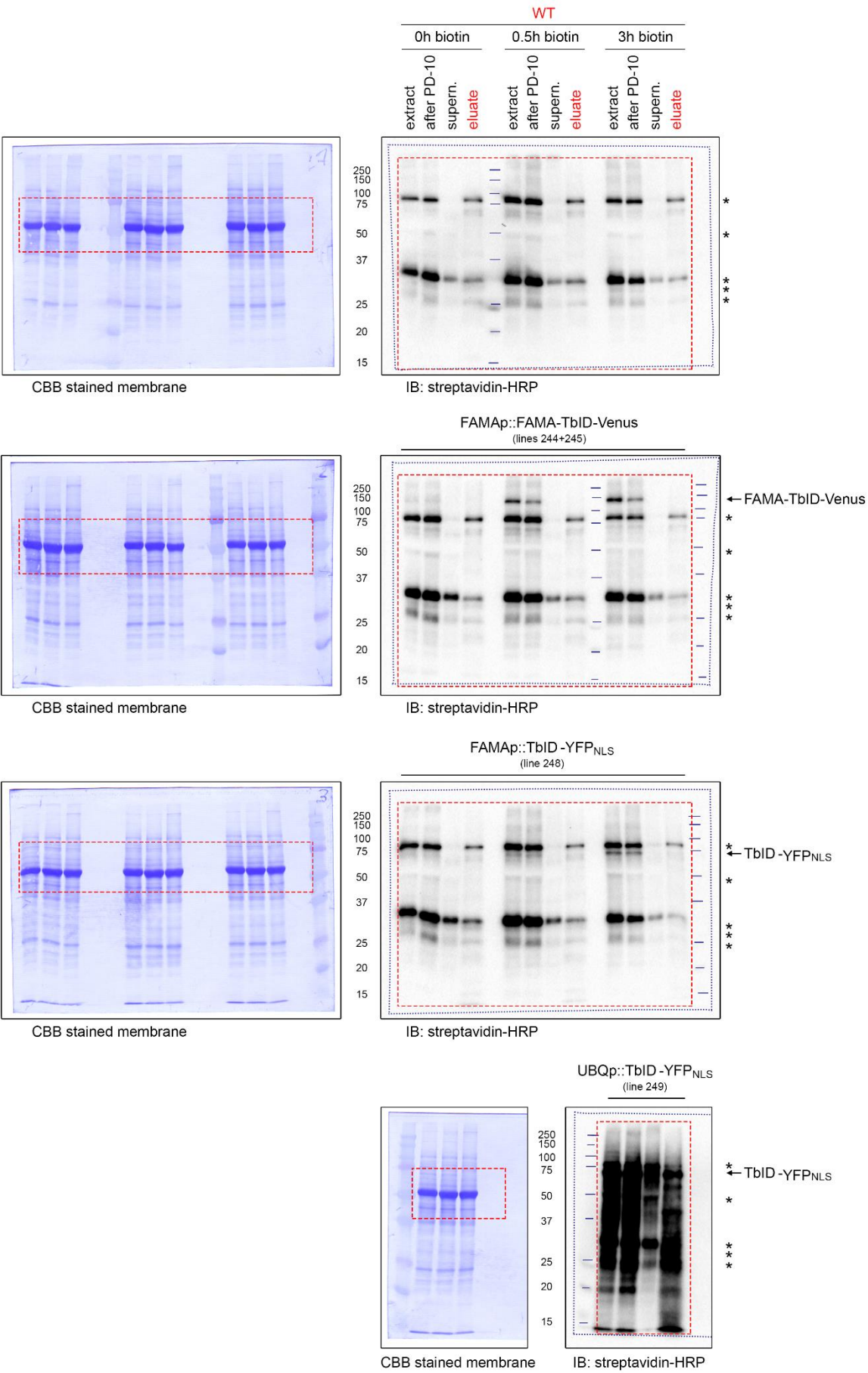


Figure 5 – figure supplement 5

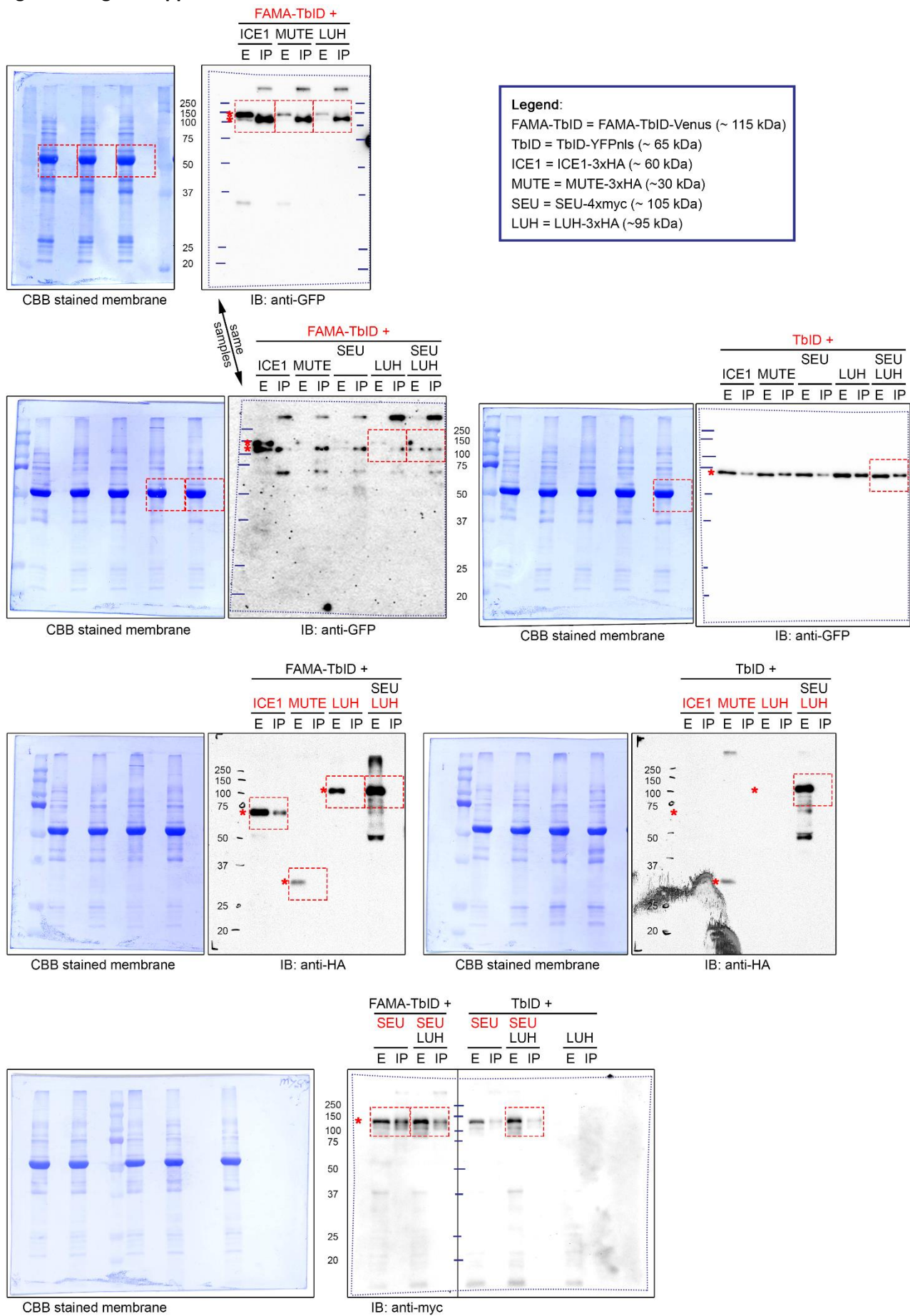


Figure supplement – uncropped immunoblots: page 19