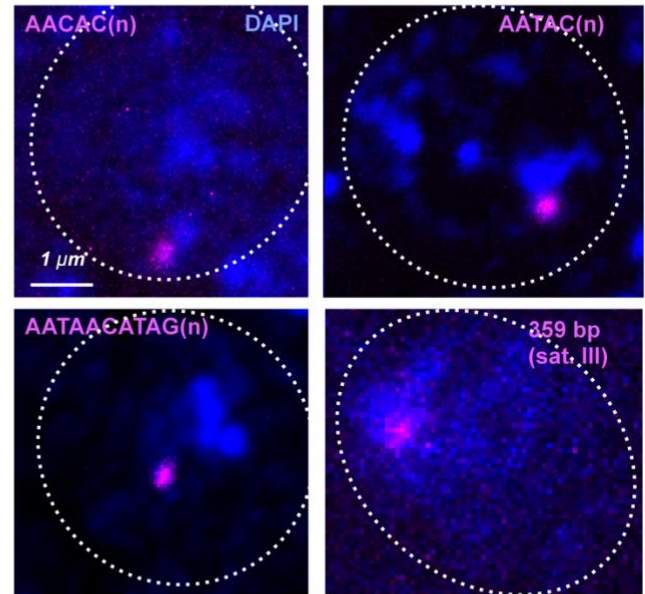


**a**

Repeat	RNA-Foci?	Repeat	RNA-Foci?
AAACC(n)	ND	AGCC(n)	ND
AAACG(n)	ND	AGCCCC(n)	ND
AAAG(n)	ND	AGCCG(n)	ND
AACAG(n)	ND	AGCGG(n)	ND
AACGG(n)	ND	AGTCT(n)	ND
AATC(n)	ND	ATATC(n)	ND
AAGAGG(n)	ND	ATC(n)	ND
AAGCG(n)	ND	ATCGC(n)	ND
AAGGAG(n)	ND	ATTAC(n)*	ND
AATAG(n)	ND	dodeca	ND
AATAGAC(n)	ND	AACAC(n)*	+
AATC(n)	ND	AATAC(n)*	+
AATT(n)	ND	359 satellite*	+
ACCC(n)	ND	AATAACATAG(n)	+
ACCCC(n)	ND	AAGAG(n)*	+
AGC(n)	ND		

**b**

**Figure 1-figure supplement 1. RNA-FISH analysis of satellite RNAs in cycle 14 embryos. a**, ND=Not detected, \*repeats tested for expression from both strands. For more details about AAGAG RNA in cycle 14, see Fig. 1, A and E and Figure 1-figure supplement 2D. **b**, Projections of cycle 14 nuclei (dashed circle = nuclear periphery); DNA (DAPI)= blue, indicated satellite RNAs in magenta.