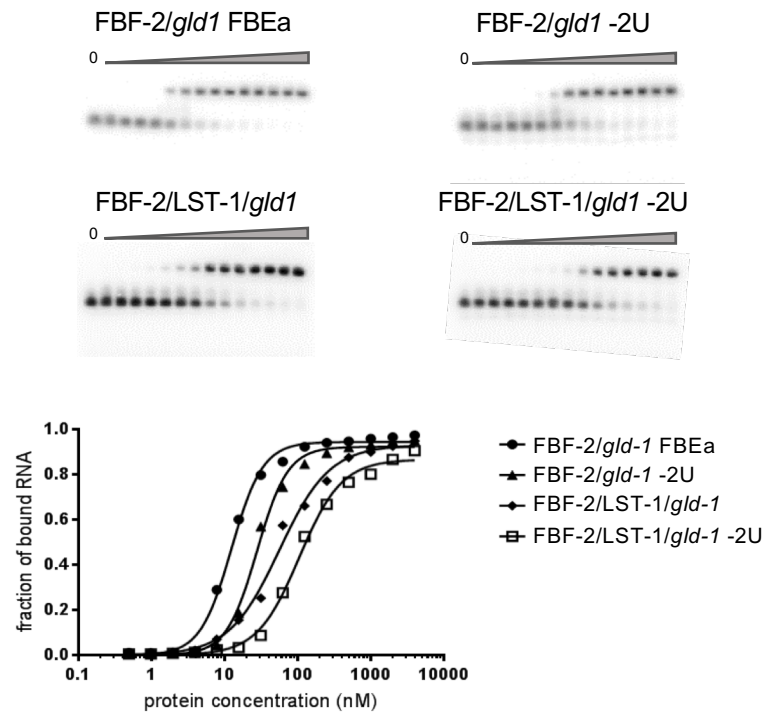


Figure 5 Supplement 1

A



B

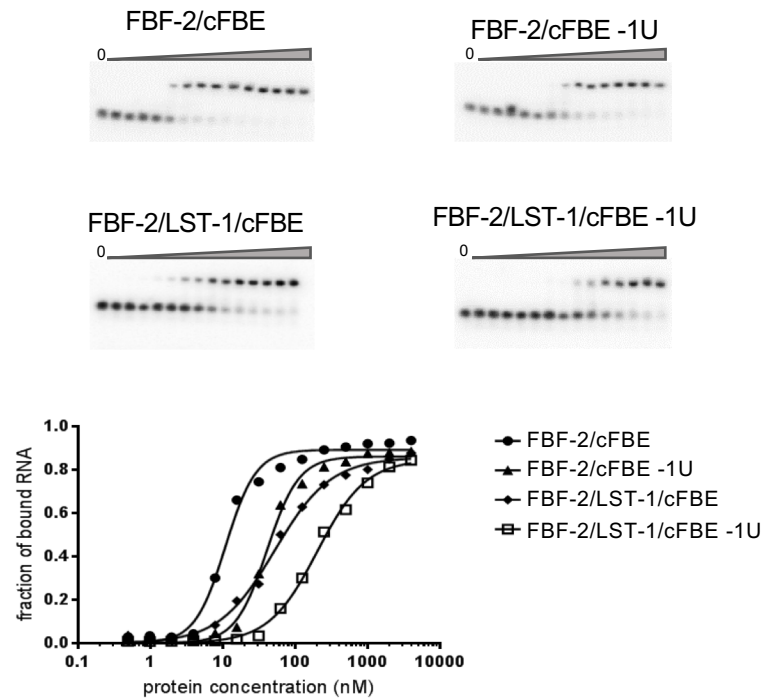


Figure 5 Supplement 1. Representative EMSA gels and corresponding binding curves are shown for binding to *gld-1* (A) and compact FBE (cFBE, B) RNAs. Triangles above the gels indicate increasing concentrations of FBF-2 from 0.49 to 4000 nM. The left lanes in each gel contained no protein. K_d values for triplicate experiments are presented in Table 2.