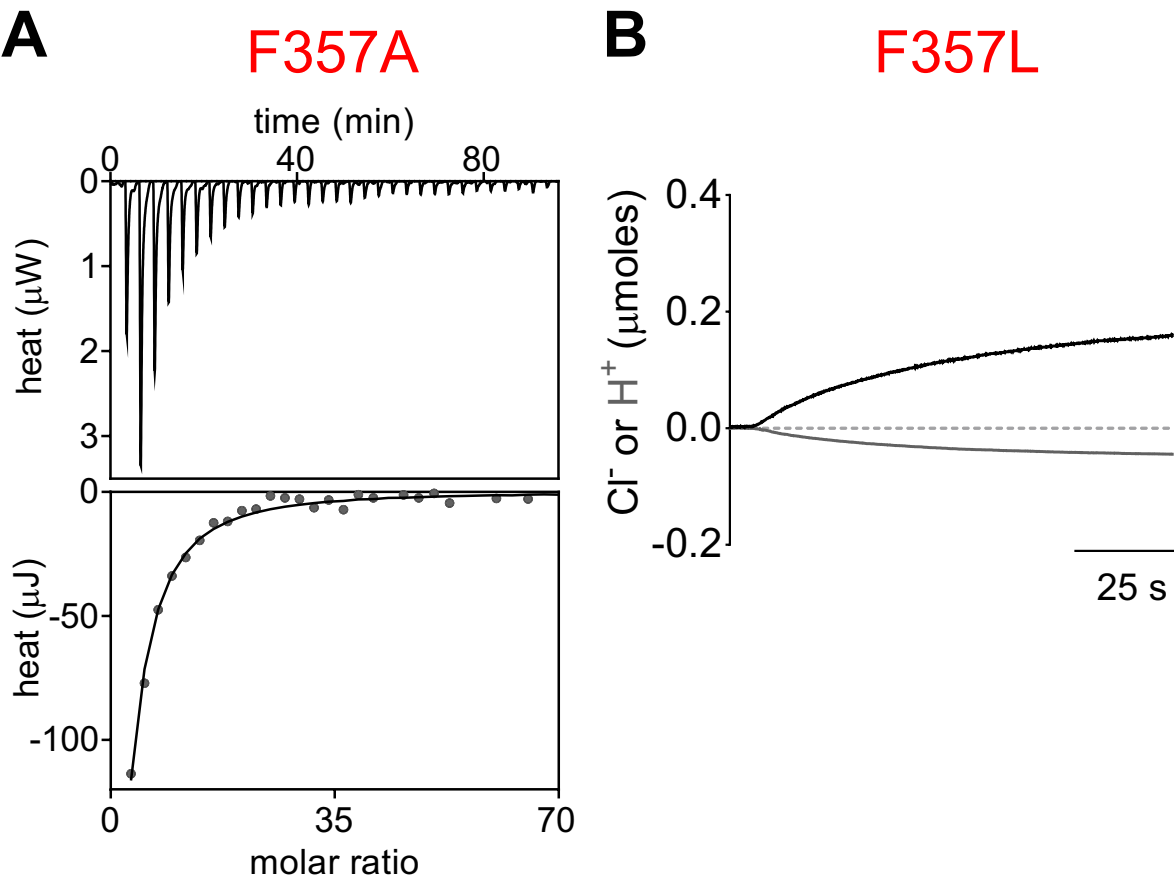


Figure 4 - Supplement 1



C

	γ ion s^{-1} (\pm SEM)	N	n Cl^- : 1 H^+ (\pm SEM)	N
CLC-ec1	2741 (\pm 687)	12	2.3 (\pm 0.1)	3
F190A	652 (\pm 126)	4	8.6 (\pm 0.2)	6
F357A	308 (\pm 126)	6	5.0 (\pm 1.5)	5
F357L	610 (\pm 139)	4	4.7 (\pm 0.2)	6
E148A	974 (\pm 163)	6		
E148A/F190A	3494 (\pm 295)	6		
E148A/F357A	582 (\pm 133)	6		