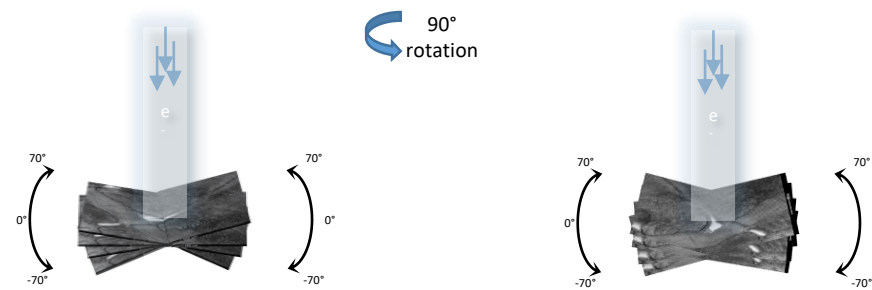


**Figure 8 – figure supplement 1**

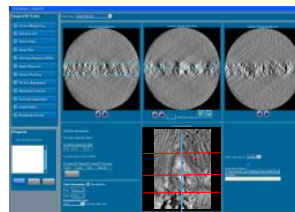
**a Data Collection**



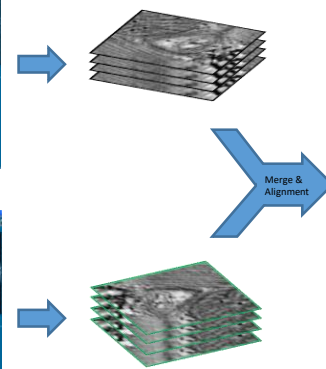
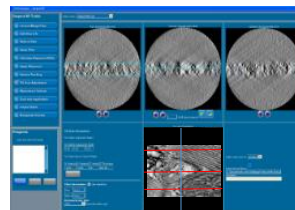
The mapped junction is found and dual tilt-series collected over  $\pm 70$  at  $1^\circ$  increments

**b Reconstruction**

**i First Single tilt series**

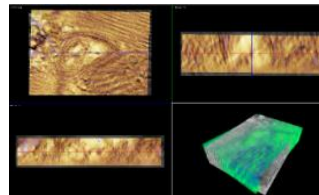


**Second Single tilt series**



**ii**

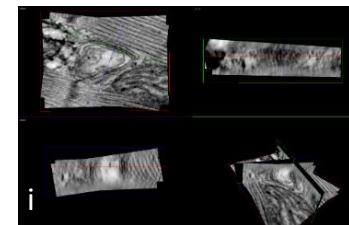
Dual tilt alignments using Amira



Single tilt-series reconstructions using Inspect 3D software, tilt-series are back-projected to form tomograms-stored as slices along Z

**c Modeling and Analysis**

Multiplanner view of the dual tilt aligned tomogram for tetramer localization and orientation



Manual segmentation and Modeling of the dual tilt aligned tomogram

