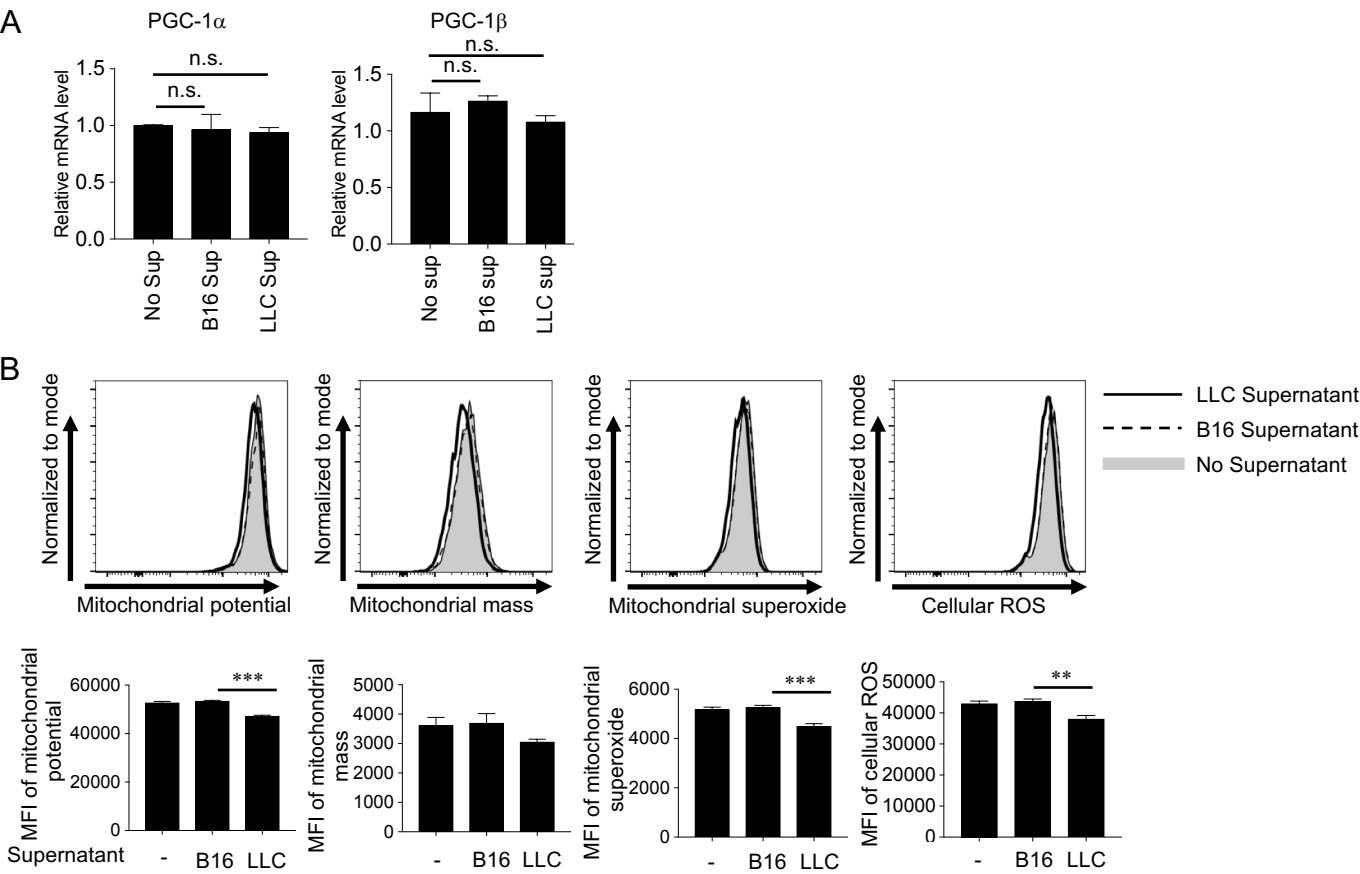


Figure 6-figure supplement 3



**Figure 6-figure supplement 3. Soluble suppressive factors inhibit mitochondria.** (A) In continuation with Figure 6F, mRNA level of PGC-1 $\alpha$  and PGC-1 $\beta$  were quantified in the tumor supernatant (sup) treated naïve CD8 $^{+}$  T cells. (B) B cells (B220 $^{+}$  lymphocytes) were purified from spleen of 8-week old C57BL/6N mice and were stimulated with B16 or LLC supernatants for 2 hours. Following the stimulation, mitochondrial dye staining was performed. Representative histogram (upper panel) and MFI (lower panel) of each dye are shown. Data represent the means  $\pm$  SEM of three wells.  $^{**}p < 0.01$ ,  $^{***}p < 0.001$ , one-way ANOVA analysis. Data are representative of two independent experiments. n.s. represents 'not significant'.