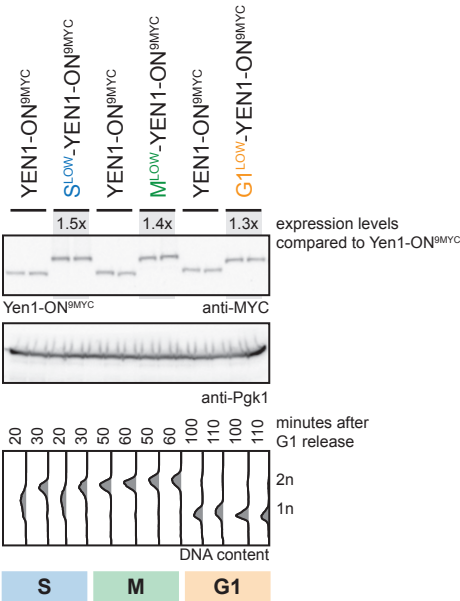
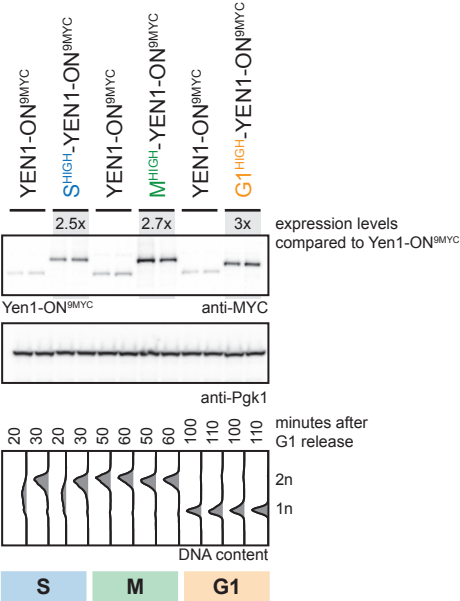


Bittmann_Figure 5 - supplement 2

A



B



C

tested M-tagged constructs	peak expression compared to wt	tested S-tagged constructs	peak expression compared to wt	tested G1-tagged constructs	peak expression compared to wt	
Clb2 ^{pClb2}	++	Clb6 ^{pClb5}	+	Sic1 ^{pSic1}	++(+)	
Clb1 ^{pClb2}	+	Clb6 ^{pClb6}	+	Sic1 ^{pSic1 -20bp}	+(+)	High
Clb2 ^{pClb2 -40bp}	+	Clb6 ^{pClb6 -40bp}	-	Sic1 ^{pSic1 -40bp}	+(+)	
Clb1 ^{pClb1 -150bp}	=	Clb6 ^{pClb6 -60bp}	+	Sic1 ^{pSic1 u(CTA)AUG}	=(+)	
Clb2 ^{pClb2 -60bp}	=	Clb6 ^{pClb6 -80bp}	=	Sic1 ^{pSic1 u(ATA)AUG}	=	Low