

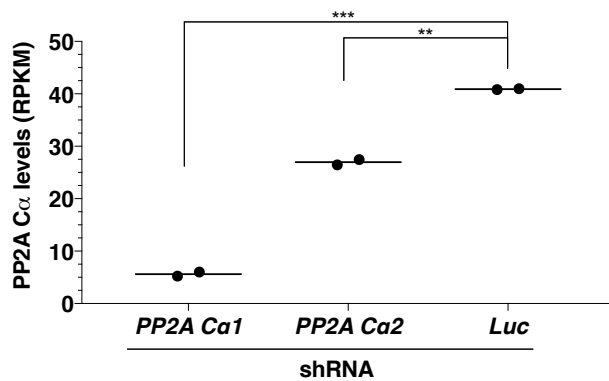
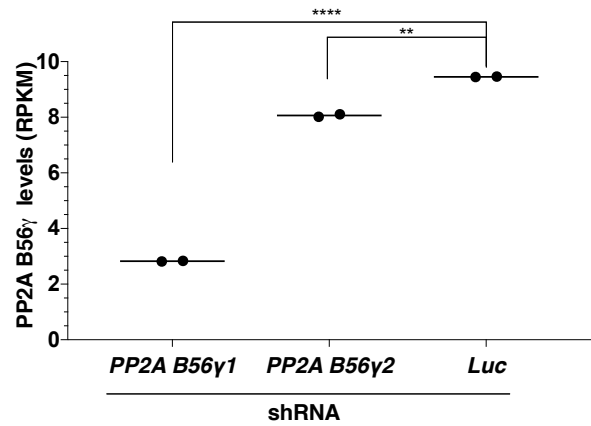
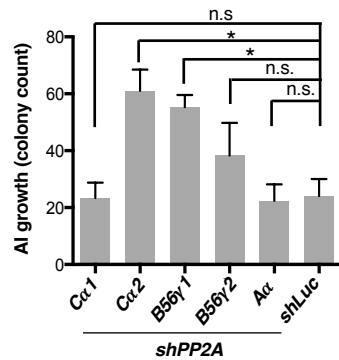
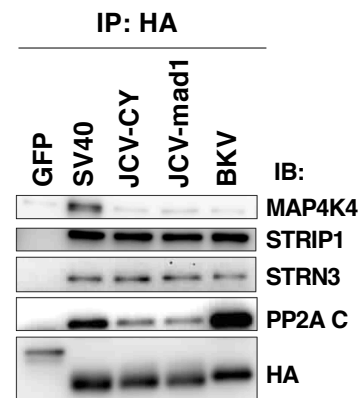
A**B****C****D**

Figure 1- figure supplement 1. (A) PP2A Ca after knockdown using *shPP2A Ca1* and *shPP2A Ca2* and (B) PP2A B56g after knockdown using *shPP2A B56g1* and *shPP2A B56g2* as measured by RNAseq (Reads Per Kilobase of transcript, per Million mapped reads). (C) AI colony count following knockdown of the indicated PP2A subunits. AI growth was assessed after PP2A subunits were suppressed using shRNAs specific for the individual subunits. (D) Interactions of polyoma virus STs with STRIPAK and MAP4K4. Co-immunoprecipitation of HA-tagged STs with components of STRIPAK and MAP4K4 confirmed results from proteomic studies. mRNA levels of (student's t-test: n.s.= not significant, *p<0.01, **p<0.001, ***p<0.0001).