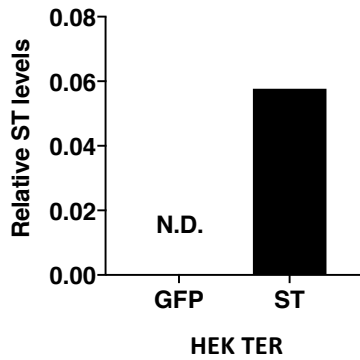
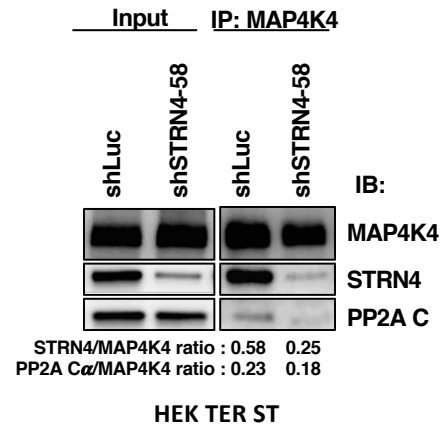


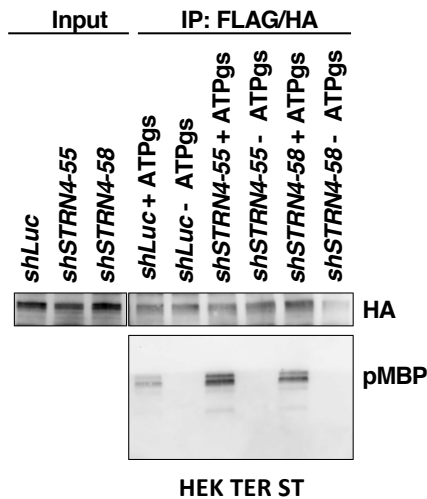
A



B



C



D

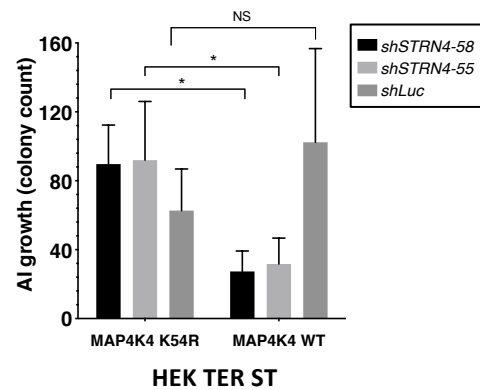


Figure 6-figure supplement 1. (A) Detection of ST from co-immunoprecipitation of STRN4 GFP- and ST-expressing cells through proteomic analysis. The values were normalized to STRN4 counts. ST was not detected (N.D.) in the GFP-expressing cells. (B) Co-immunoprecipitation analysis of endogenous MAP4K4 in HEK TER ST cells with STRN4 or PP2A Cα after cells were depleted for *STRN4* or relative to a *shLuc* control. Ratio was calculated between Co-IP levels of STRN4/MAP4K4 or PP2A Cα/MAP4K4 after blot quantification. (C) Representative immunoblot depicting the results of an *in vitro* kinase assay of tandem-affinity purified MAP4K4 from HEK TER ST cells expressing *shSTRN4-58*, *shSTRN4-55* or *shLuc* control. (D) AI colony count of HEK TER ST cells expressing MAP4K4 kinase-dead mutant (K54R) or WT in combination with either *shSTRN4-58* or *shSTRN4-55* (student's t-test: n.s.= not significant, *p<0.01).