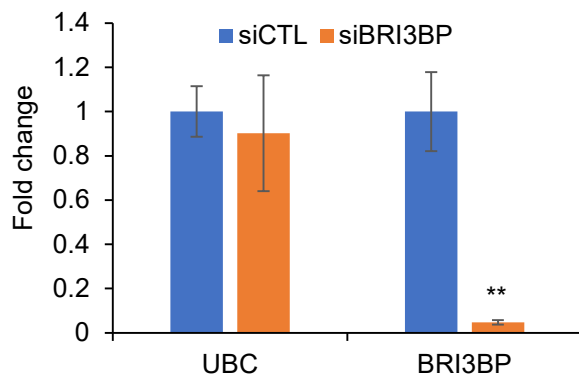
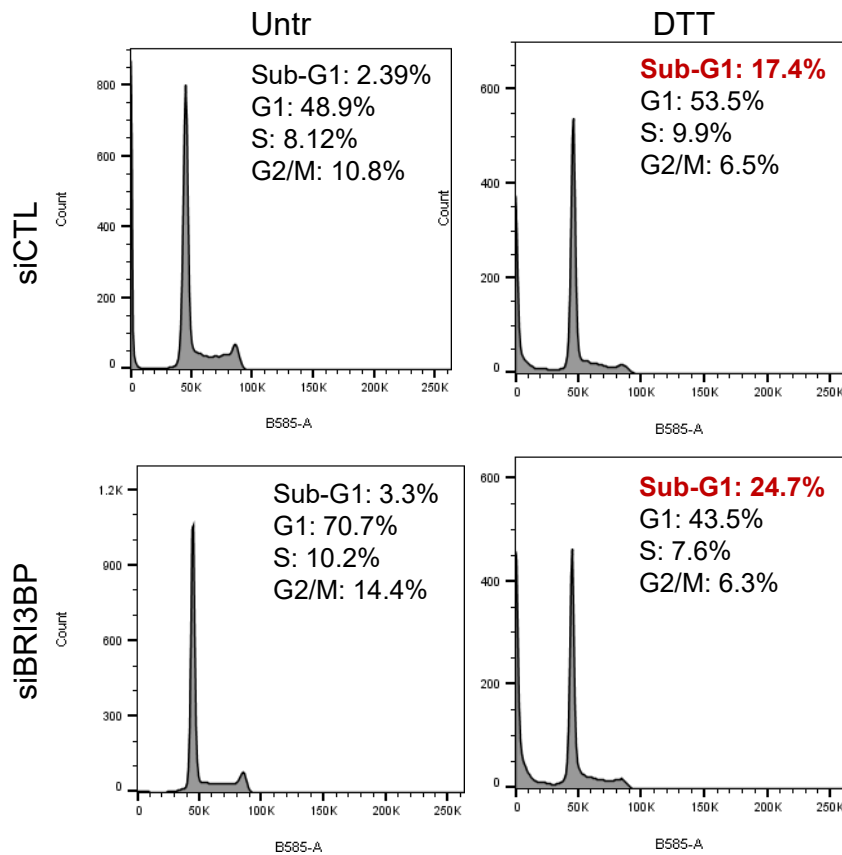


A**B****Figure 4-figure supplement 4.**

(A) qRT-qPCR was performed from LS180 cells transfected for 48 hr with control siRNAs (siCTL) or BRI3BP siRNAs Smartpool (siBRI3BP). *GAPDH* was to normalize the data and UBC was used as negative control. **(B)** PI staining and FACS analysis was performed from LS180 cells transfected for 48 hr with control siRNAs (siCTL) or BRI3BP siRNAs and then treated with DTT for 2 hr. Error bars represent SD from 3 experiments. **p<0.005.