

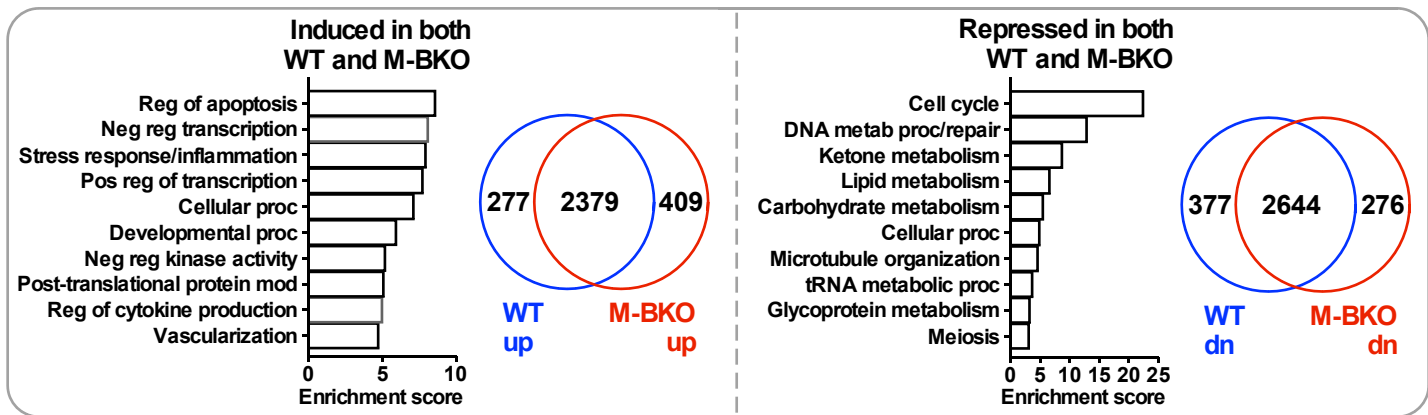
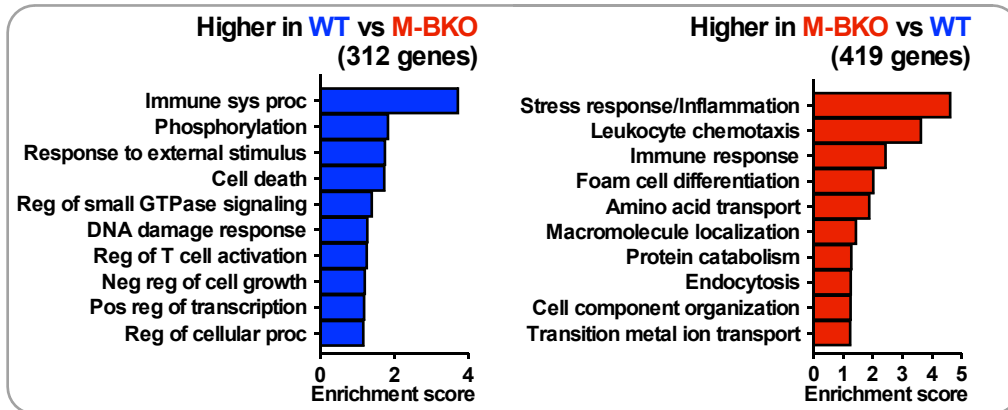
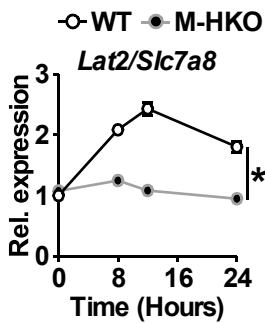
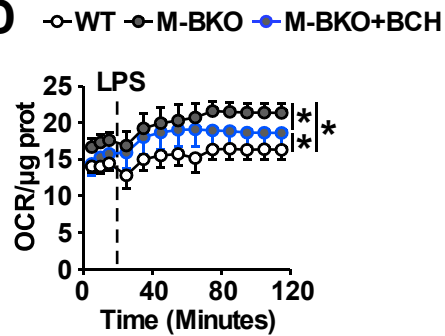
**A**Genes induced or repressed by 8 h M1 activation ( $|F.C.| > 1.5$ ,  $p < 0.05$ ,  $FDR < 0.05$ )**B**Differentially expressed genes in M1-activated macrophages ( $p < 0.05$ ,  $FDR < 0.05$ )**C****D**

Fig. 5 Supplemental figure 1