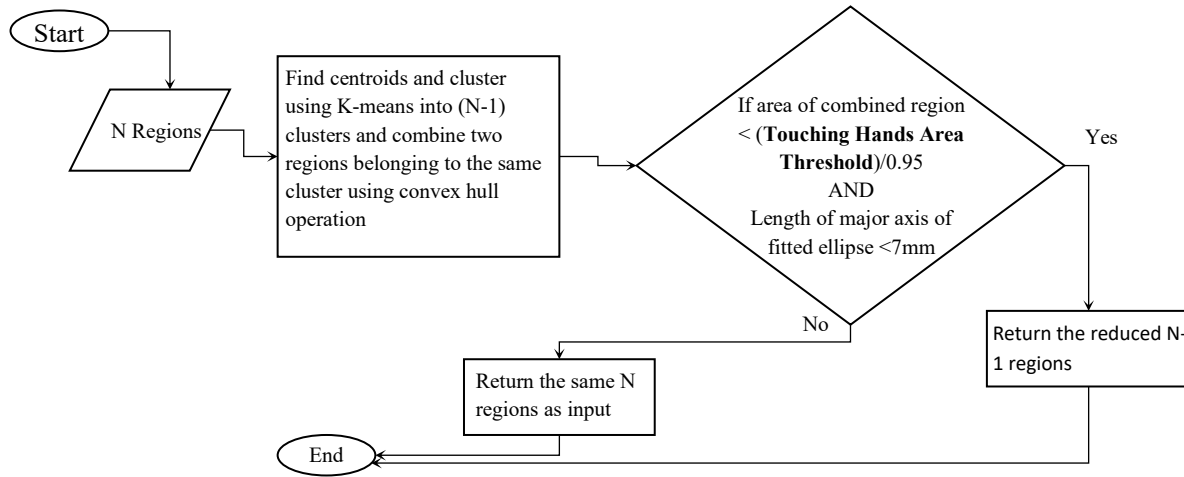


### Combining close by regions using kmeans and convex hull operation



**Figure 9 - figure supplement 1. Algorithm to reduce the number of regions by spatial clustering.** Close by regions are combined provided that the combined region's area is less than the threshold and the length of the major axis of fitted ellipse is less than 7mm. For ears and nose, only the length of major axis of fitted ellipse should be less than 9 and 8 mm respectively.