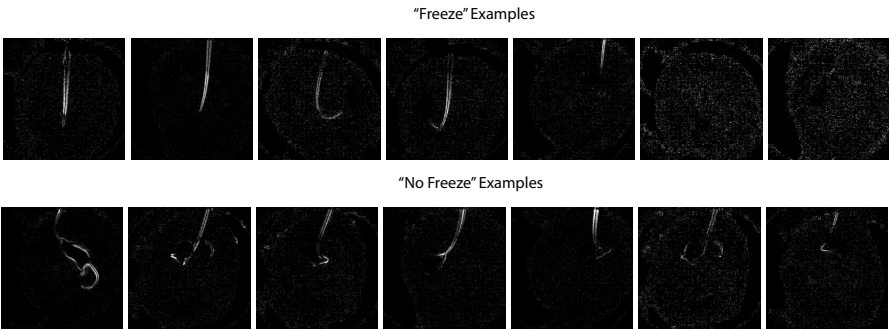
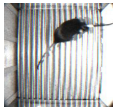


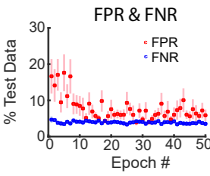
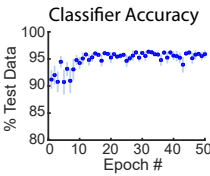
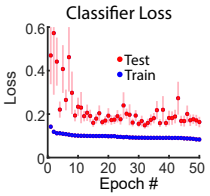
A



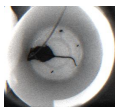
B



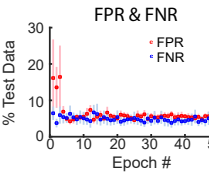
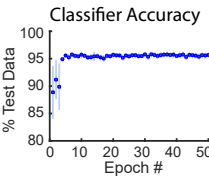
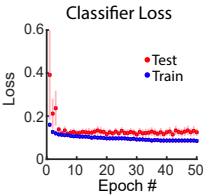
36,000 Images
Freeze: 13,000
No Freeze: 15,000
32 mice



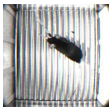
C



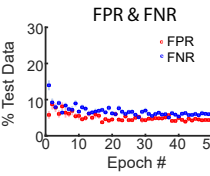
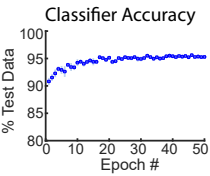
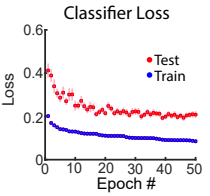
49,000 Images
Freeze: 23,000
No Freeze: 26,000
6 mice



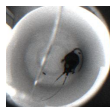
D



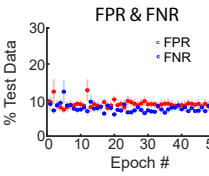
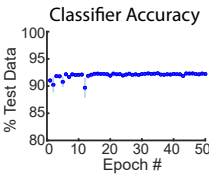
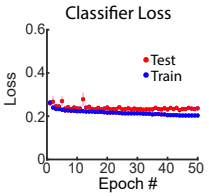
40,000 Images
Freeze: 22,000
No Freeze: 22,000
63 mice



E



48,000 Images
Freeze: 28,000
No Freeze: 20,000
6 mice



F

Human Observer 1 vs. Human Observer 2
n = 33,000 frames

