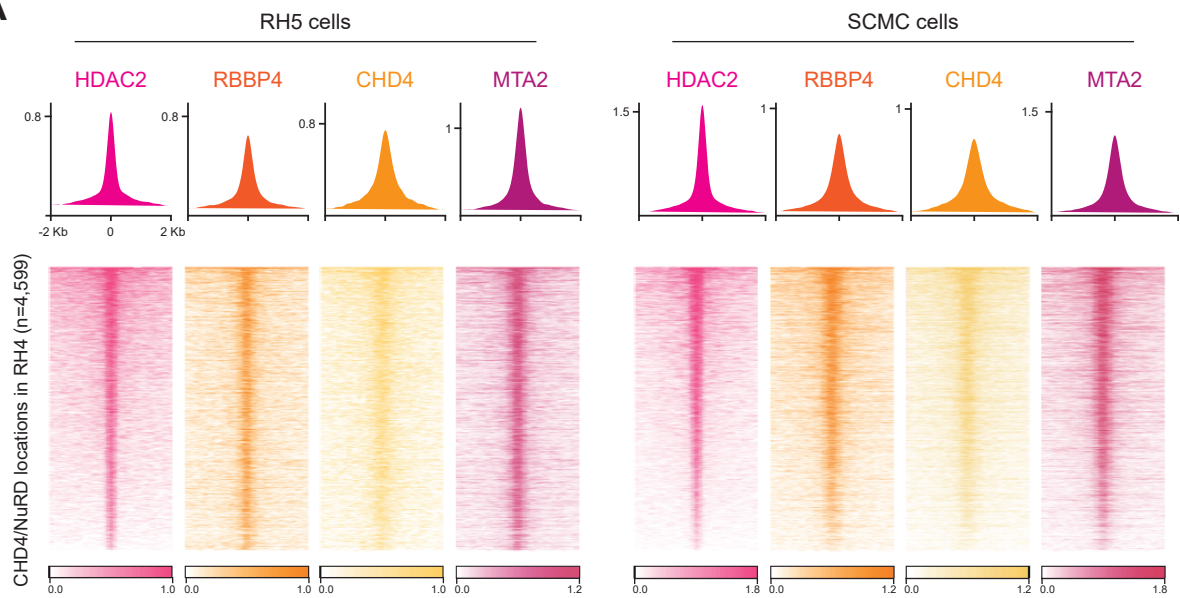


Figure 3 - figure supplement 1

A



B

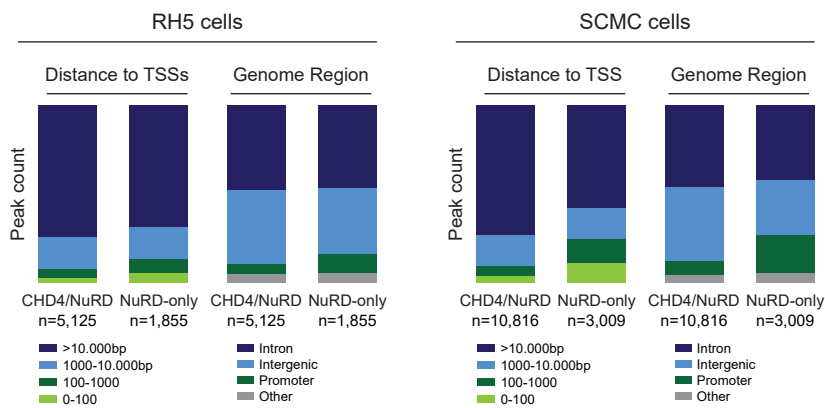


Figure 3 - figure supplement 1 The NuRD complex localizes to similar enhancer locations in RH5 and SCMC cells as in RH4. **A** Density plots and heatmaps depicting the ChIP-seq signal of the indicated NuRD subunits at CHD4/NuRD locations defined in RH4 cells (n=4,599). The rows show 8kb regions and color shading corresponds to ChIP-seq read counts. **B** Distribution of peak counts for CHD4/NuRD and NuRD-only locations in RH5 and SCMC cells according to their distance to transcription start sites (TSSs) and genome functional region.