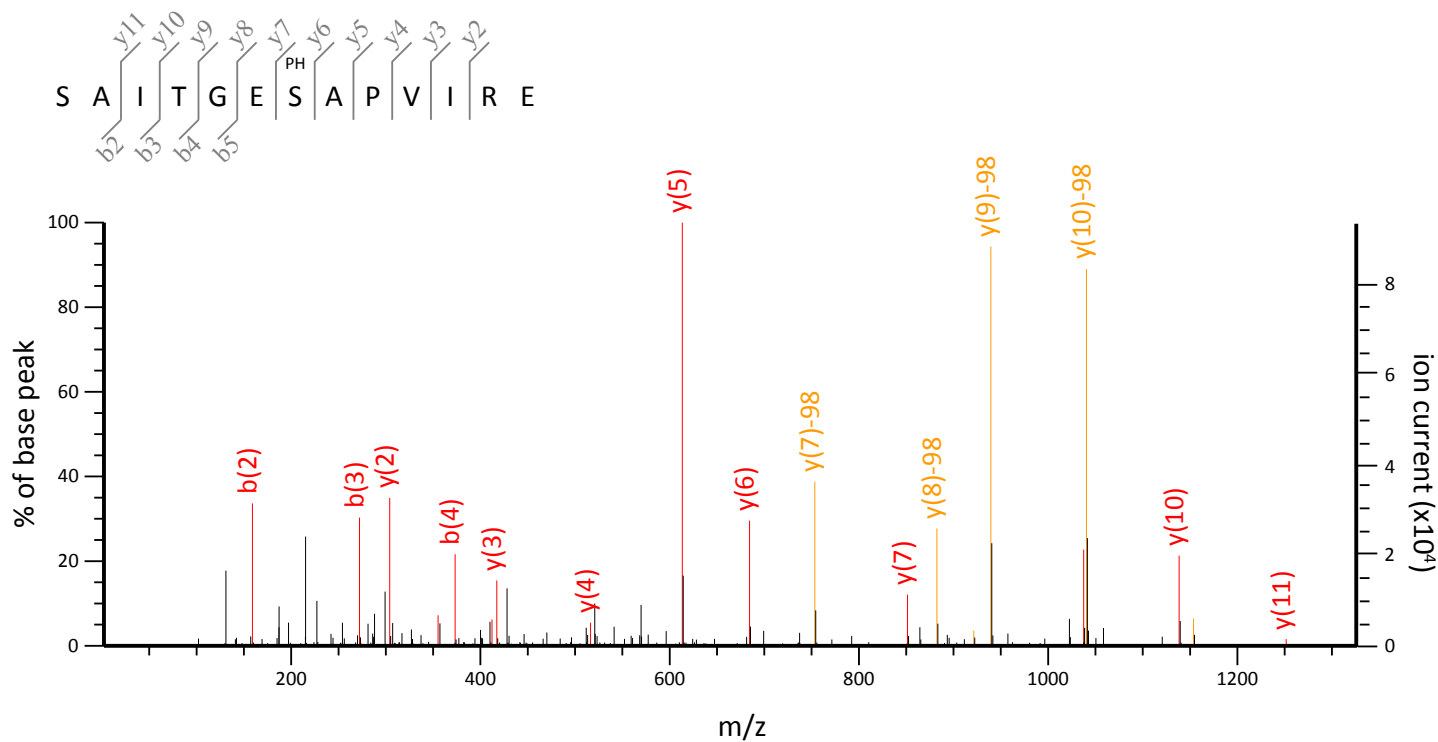


A

E.SAITGE162pSAPVIRE.S.

Observed m/z: 705.3376, Experimental mass: 1408.6606, Calculated mass: 1408.6599



B

#	b	b ⁺⁺	b ⁺	b ⁺⁺⁺	b ⁰	b ⁰⁺⁺	Seq	y	y ⁺⁺	y ⁺	y ⁺⁺⁺	y ⁰	y ⁰⁺⁺	#
1	88.0393	44.5233			70.0287	35.5180	S							13
2	159.0764	80.0418			141.0659	71.0366	A	1224.6583	612.8328	1207.6317	604.3195	1206.6477	603.8275	12
3	272.1605	136.5839			254.1499	127.5786	I	1153.6212	577.3142	1136.5946	568.8009	1135.6106	568.3089	11
4	373.2082	187.1077			355.1976	178.1024	T	1040.5371	520.7722	1023.5106	512.2589	1022.5265	511.7669	10
5	430.2296	215.6185			412.2191	206.6132	G	939.4894	470.2483	922.4629	461.7351	921.4789	461.2431	9
6	559.2722	280.1397			541.2617	271.1345	E	882.4680	441.7376	865.4414	433.2243	864.4574	432.7323	8
7	628.2937	314.6505			610.2831	305.6452	S	753.4254	377.2163	736.3988	368.7030	735.4148	368.2110	7
8	699.3308	350.1690			681.3202	341.1638	A	684.4039	342.7056	667.3774	334.1923	666.3933	333.7003	6
9	796.3836	398.6954			778.3730	389.6901	P	613.3668	307.1870	596.3402	298.6738	595.3562	298.1817	5
10	895.4520	448.2296			877.4414	439.2243	V	516.3140	258.6606	499.2875	250.1474	498.3035	249.6554	4
11	1008.5360	504.7717			990.5255	495.7664	I	417.2456	209.1264	400.2191	200.6132	399.2350	200.1212	3
12	1164.6371	582.8222	1147.6106	574.3089	1146.6266	573.8169	R	304.1615	152.5844	287.1350	144.0711	286.1510	143.5791	2
13							E	148.0604	74.5339			130.0499	65.5286	1

Figure 3 - figure supplement 1