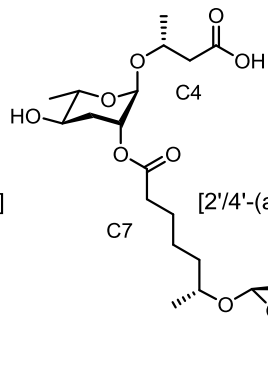
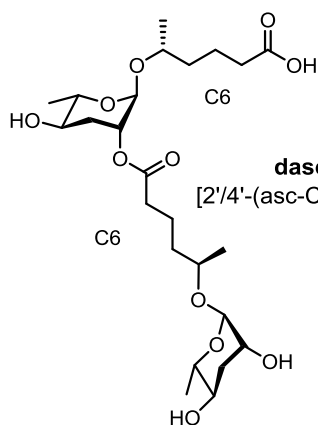


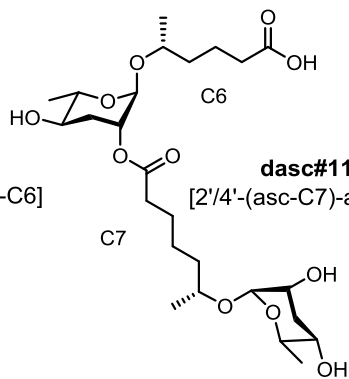
dasc#2
[2'/4'-(asc-C4)-asc-C4]



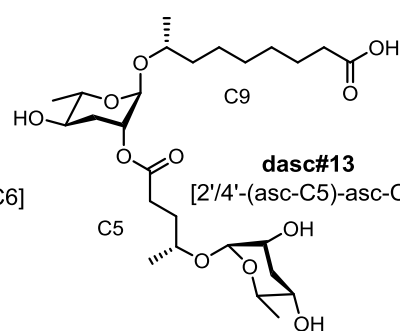
dasc#7
[2'/4'-(asc-C7)-asc-C4]



dasc#8
[2'/4'-(asc-C6)-asc-C6]



dasc#11
[2'/4'-(asc-C7)-asc-C6]



dasc#13
[2'/4'-(asc-C5)-asc-C9]