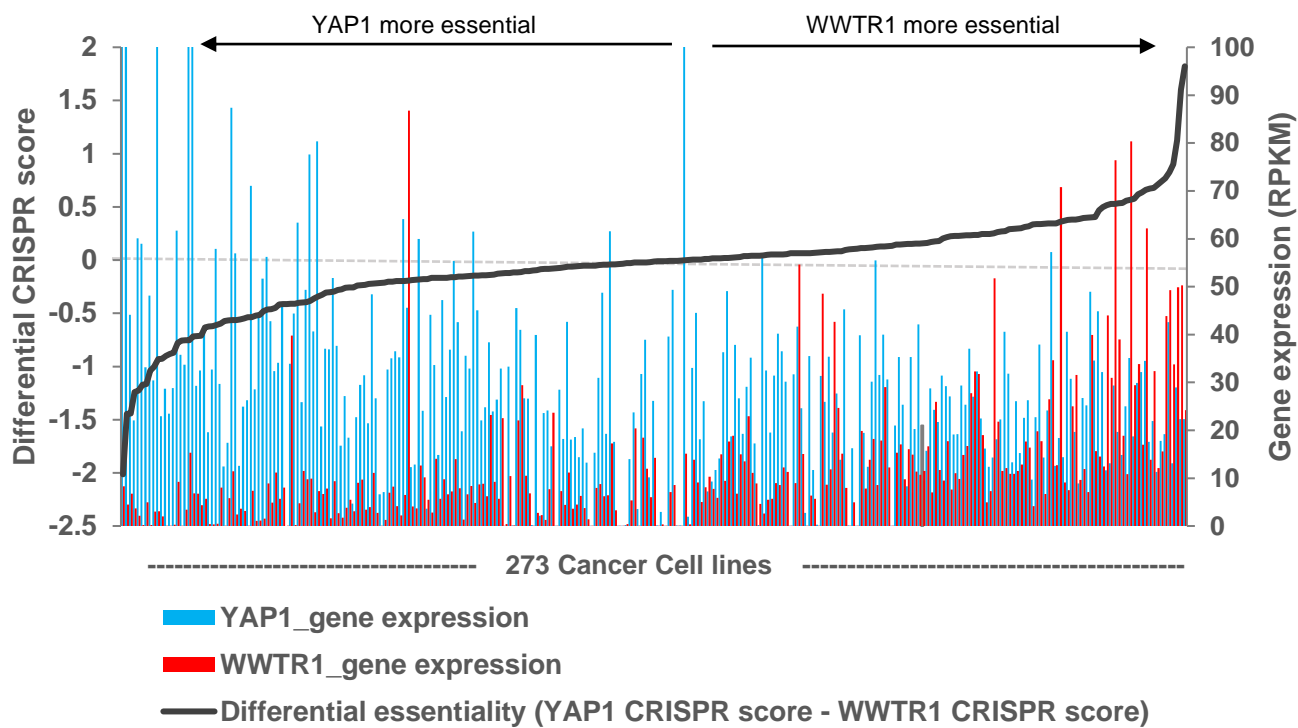


A

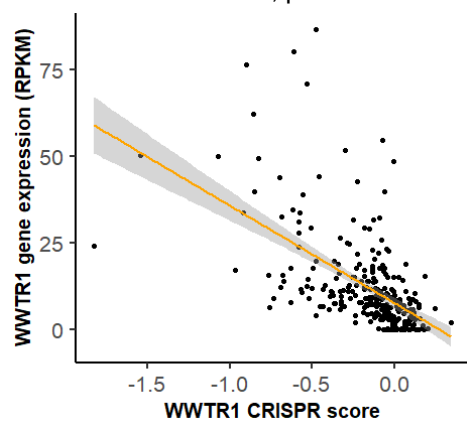
Differential essentiality of YAP1/WWTR1 and correlation with gene expression



B

Pan-cancer cell lines (Project Score)

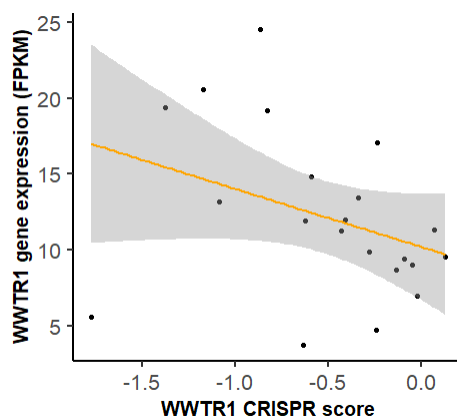
Pearson's R = -0.570, p-value = 3e-25



C

21 OSCC cell lines

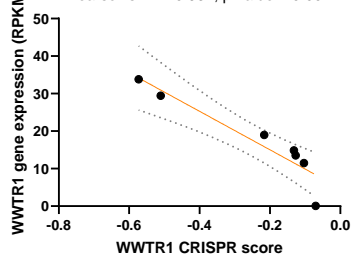
Pearson's R = -0.354, p-value = 0.116



D

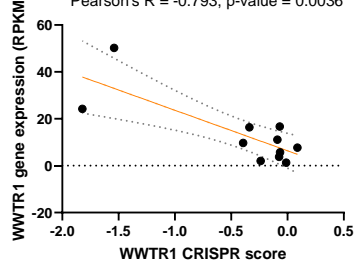
Non-small cell lung carcinoma

Pearson's R = -0.934, p-value = 0.0021



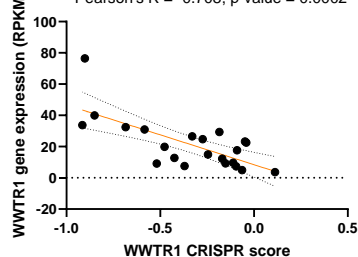
Squamous cell lung carcinoma

Pearson's R = -0.793, p-value = 0.0036



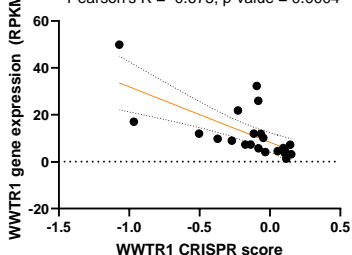
Glioblastoma

Pearson's R = -0.708, p-value = 0.0002



Breast carcinoma

Pearson's R = -0.675, p-value = 0.0004



Lung adenocarcinoma

Pearson's R = -0.586, p-value = 0.0084

