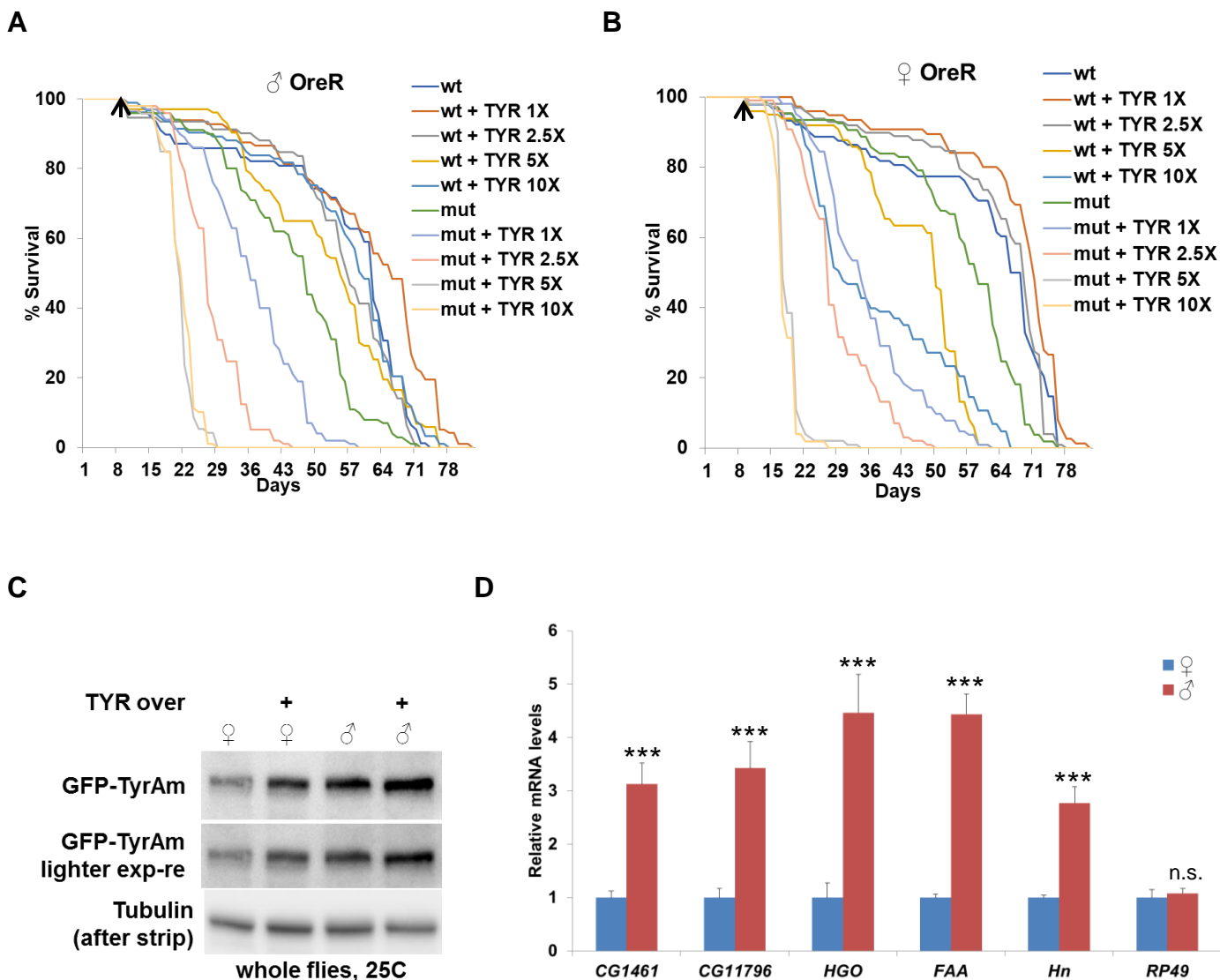


# Supplementary figures

## Figure 2-figure supplement 1



**Figure 2-figure supplement 1.** Lifespan of male (A) and female (B) wild-type and *CG1461*-deficient flies (both backcrossed to wild-type *OreR* flies) fed with the range of tyrosine concentrations (1X = 0.5g/L). Arrow indicates the beginning of tyrosine feeding. (C) Immunoblot analysis of GFP and tubulin in *CG1461*(TyrAm)-GFP-tagged flies fed either control or high tyrosine diet. (D) Relative mRNA levels of *CG1461*, *CG11796*, *Hgo*, *Faa*, *Hn*, *Rp49* in male and female flies. Means  $\pm$  SD. Means  $\pm$  SD. \* $p < 0.05$ , \*\* $p < 0.01$ , \*\*\* $p < 0.001$