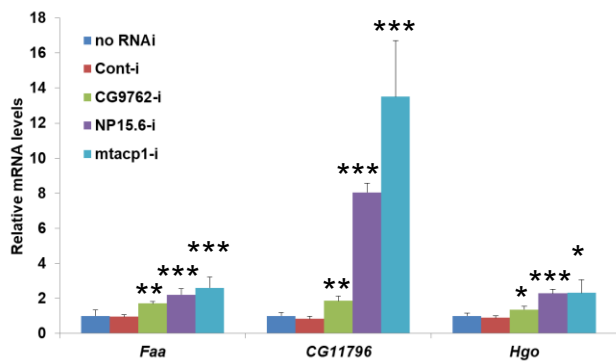


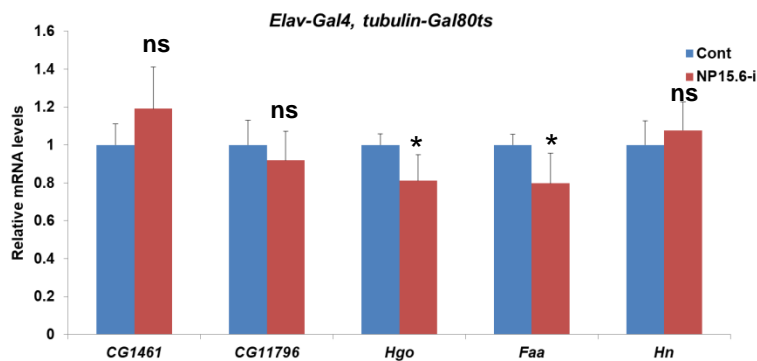
# Supplementary figures

Figure 5-figure supplement 1

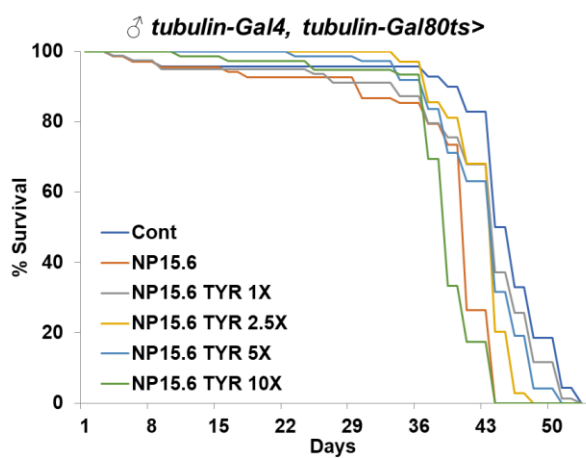
A



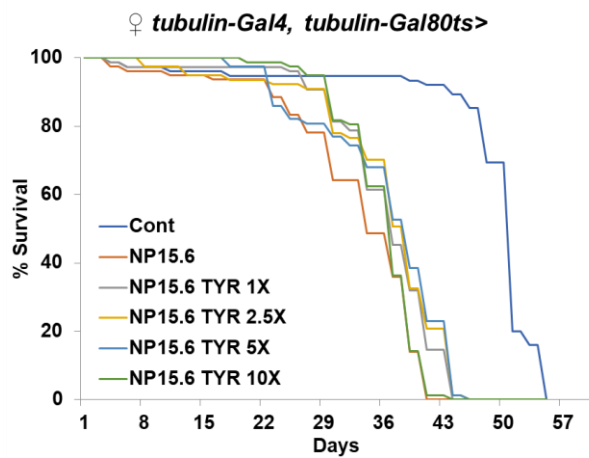
B



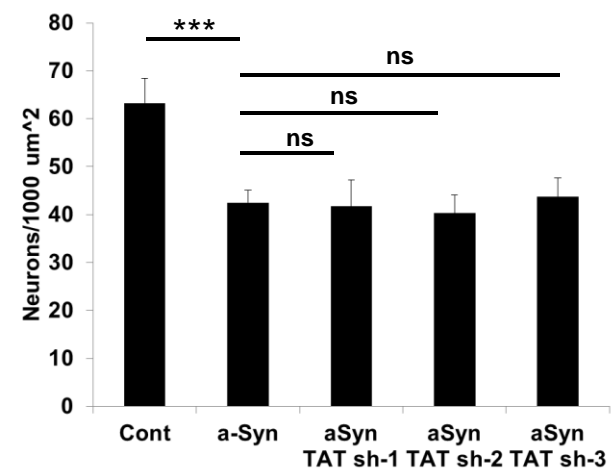
C



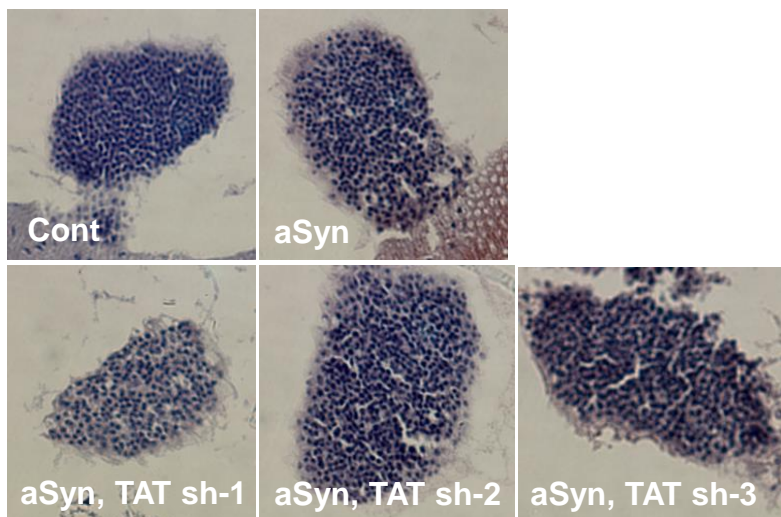
D



E



F



**Figure 5-figure supplement 1.** (A) Relative mRNA levels of *Faa*, *CG11796*, *Hgo* in *tubulin-Gal80ts*, *tubulin-Gal4* flies expressing either no RNAi, control RNAi or RNAi against different subunits of mitochondrial ETC Complex I – *CG9762*, *NP15.6*, *mtacp1* for 10d. Means  $\pm$  SD. (B) Relative mRNA levels of *CG1461/TAT*, *CG11796*, *Hgo*, *Faa*, and *Hn* in *tubulin-Gal80ts*, *elav-Gal4* flies expressing either control RNAi or RNAi against *NP15.6*. Lifespans of male (C) and female (D) *tubulin-Gal80ts*, *tubulin-Gal4* flies expressing either control RNAi or RNAi against *NP15.6* fed with the range of tyrosine concentrations (1X = 0.5g/L). Neuronal counts (E) and histology (F) of hematoxylin-stained heads from flies with or without expression of wild-type human  $\alpha$ -synuclein with or without three different RNAi against *TAT*. Means  $\pm$  SD. \* $p < 0.05$ , \*\* $p < 0.01$ , \*\*\* $p < 0.001$ .