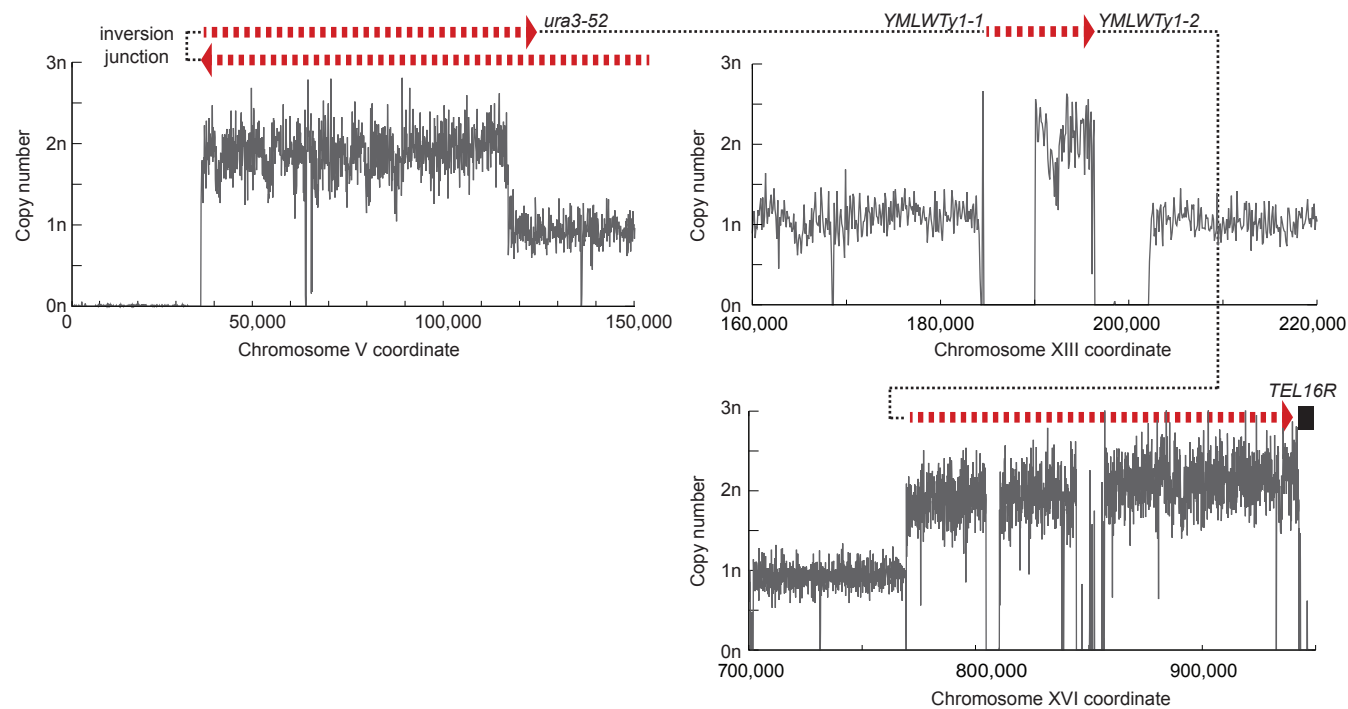


Figure 1 - figure supplement 2 (page 1 of 8)

A. PGSP3682 (*sae2Δ tel1Δ*)



B. PGSP4587 (*sae2Δ rad10Δ*)

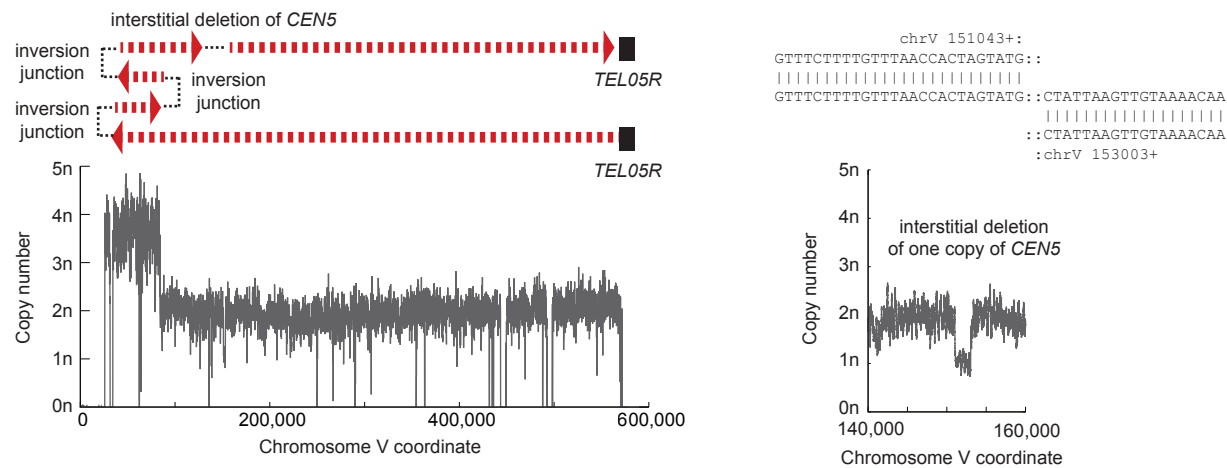
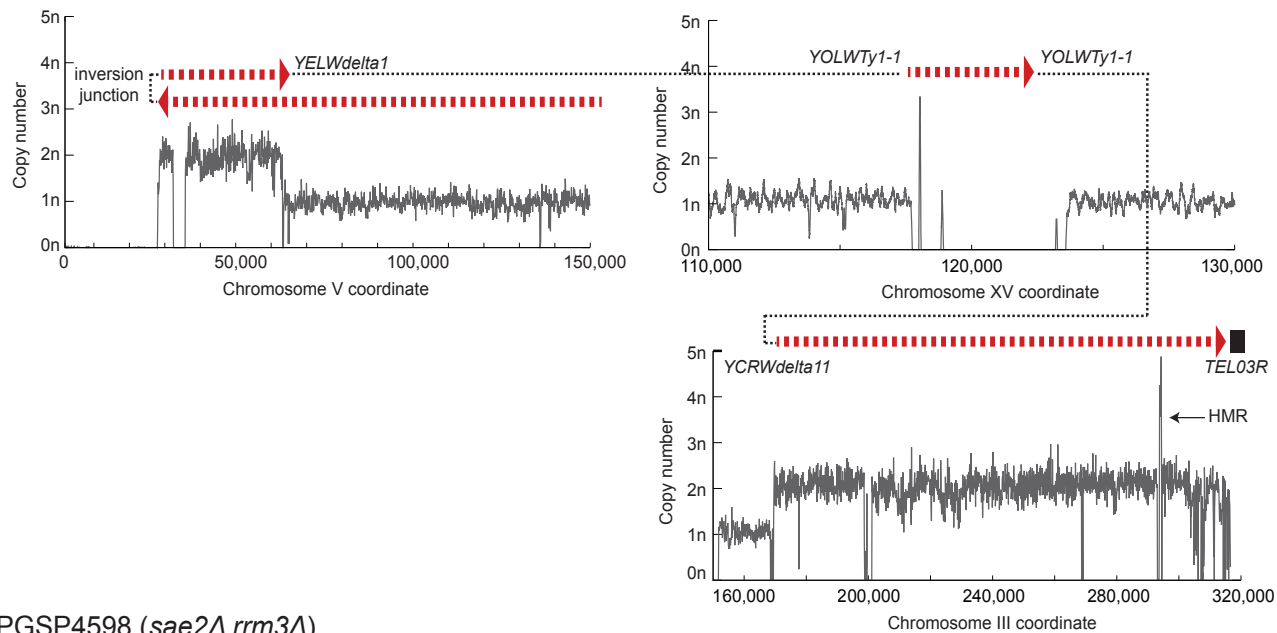
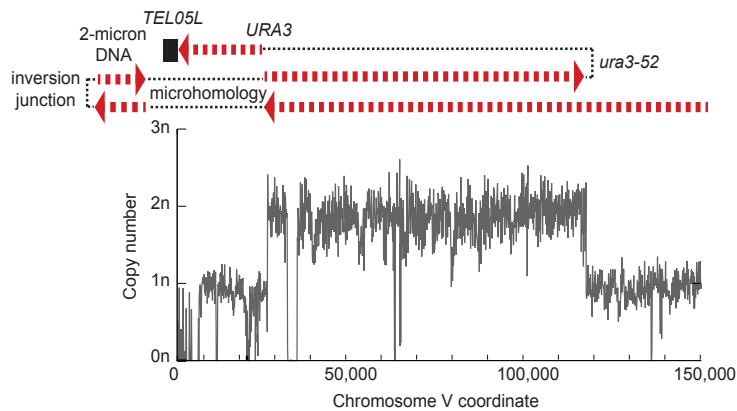


Figure 1 - figure supplement 2 (page 2 of 8)

C. PGSP4591 (*sae2Δ rad10Δ*)



D. PGSP4598 (*sae2Δ rrm3Δ*)



E. PGSP4601 (*sae2Δ rrm3Δ*)

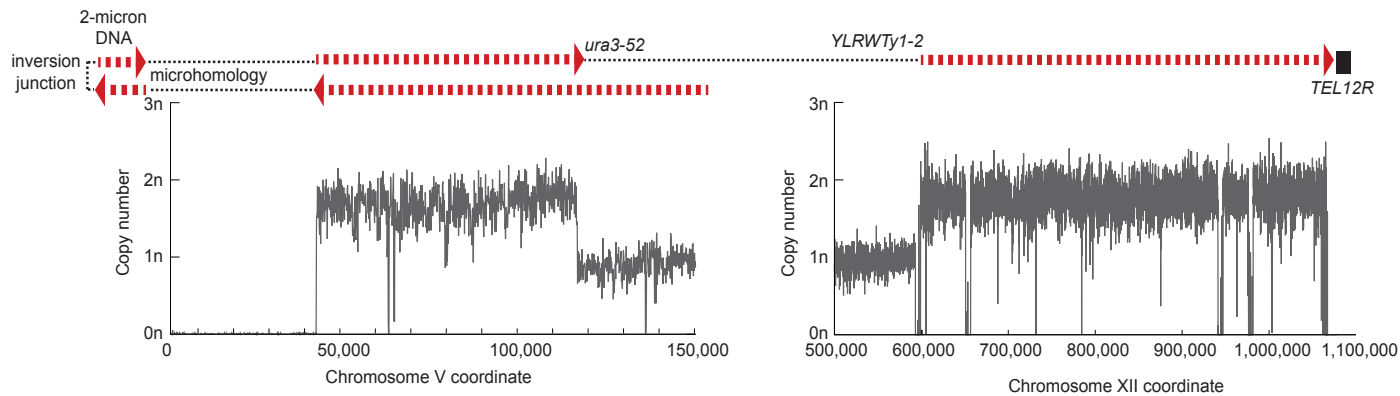


Figure 1 - figure supplement 2 (page 3 of 8)

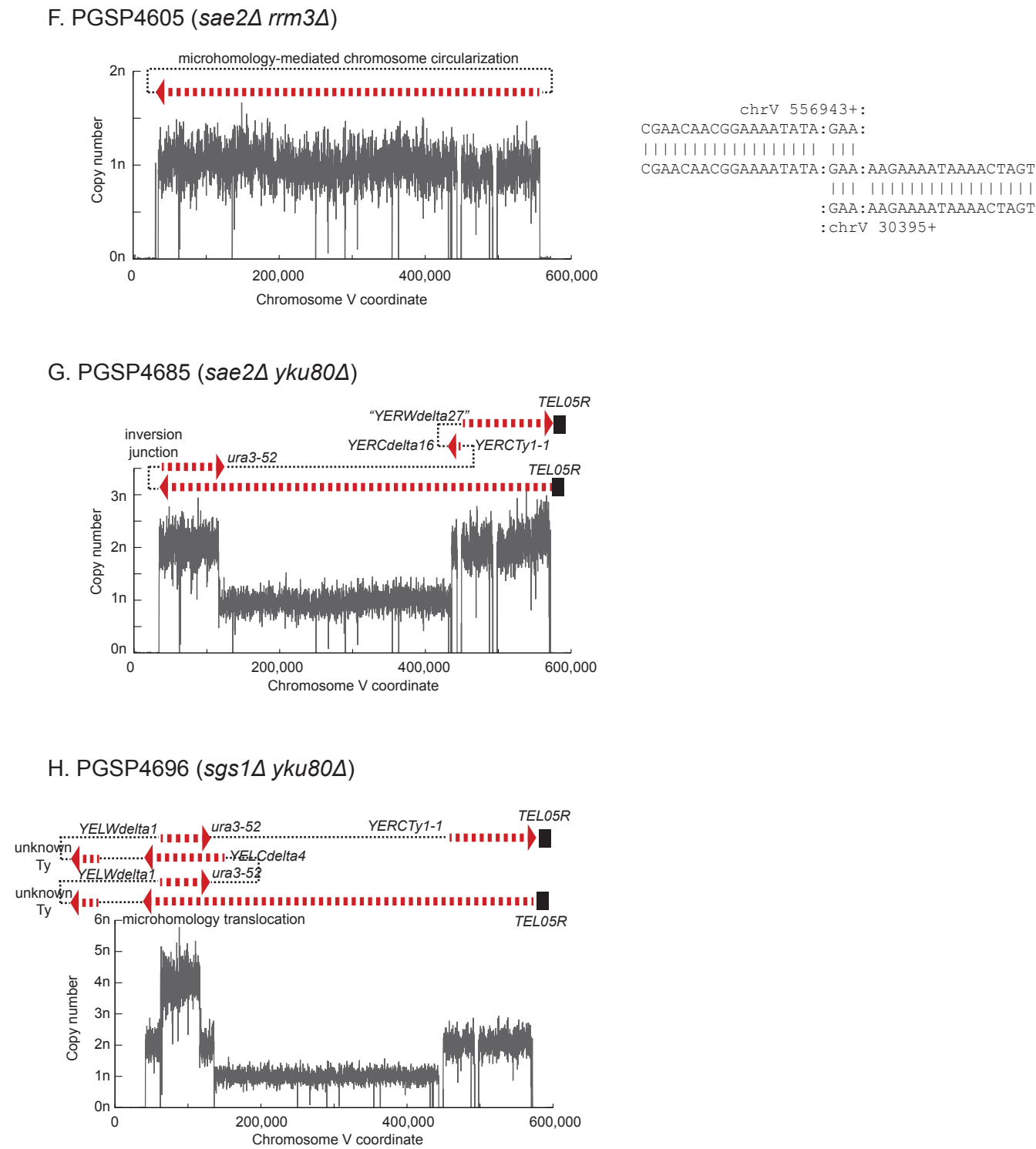
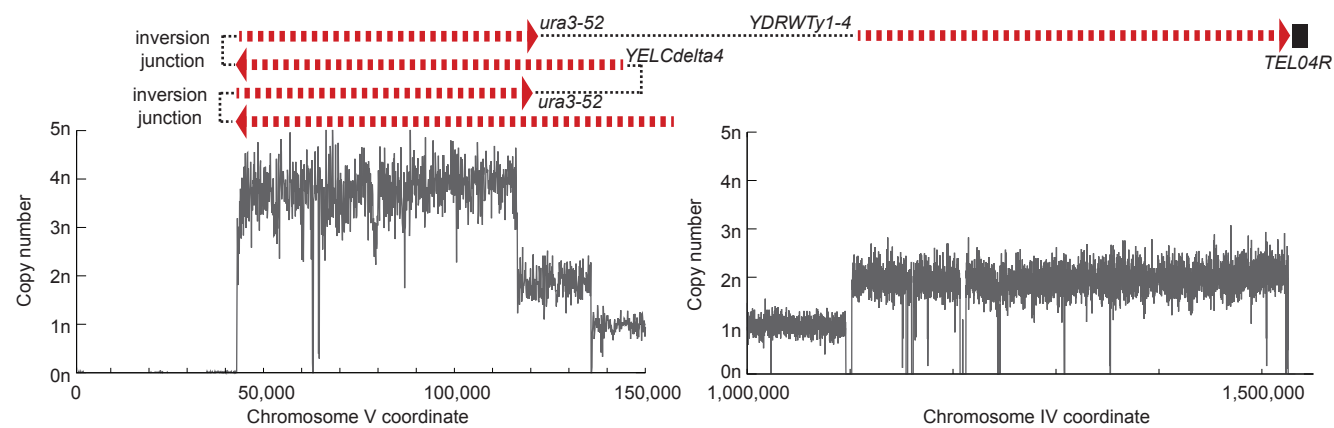
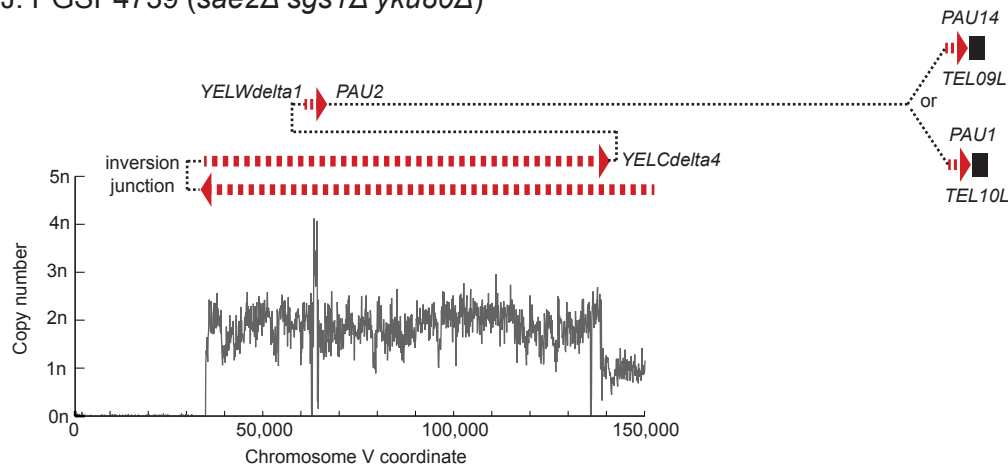


Figure 1 - figure supplement 2 (page 4 of 8)

I. PGSP4700 (*sgs1Δ yku80Δ*)



J. PGSP4739 (*sae2Δ sgs1Δ yku80Δ*)



K. PGSP4771 (*sae2-S267A*)

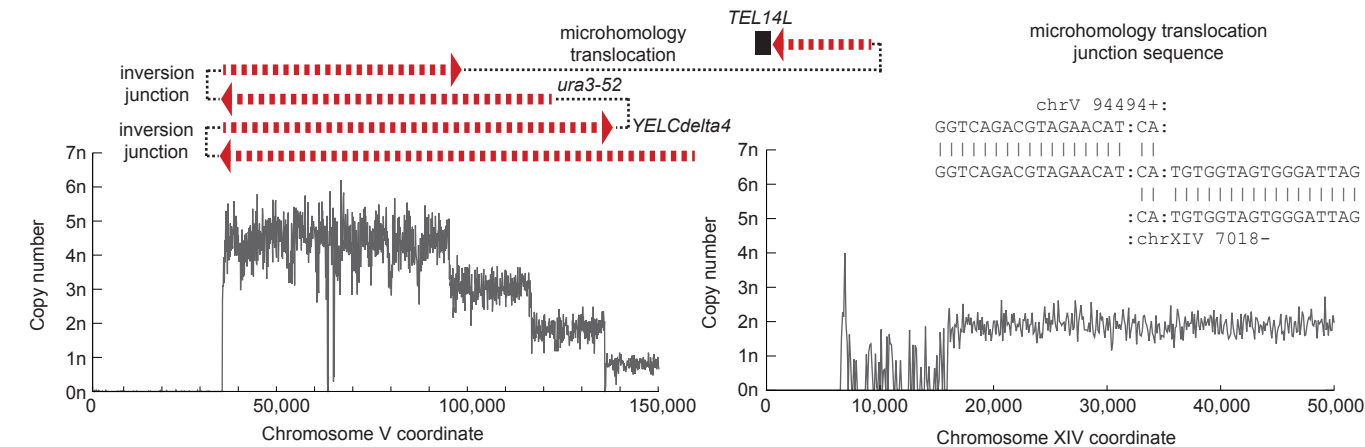
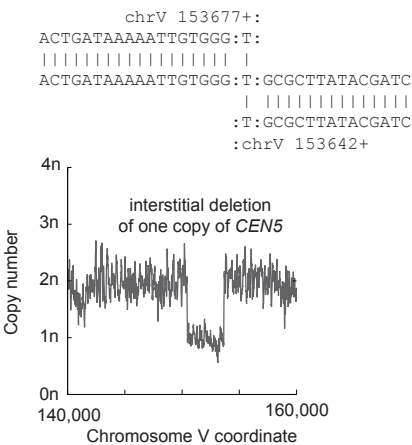
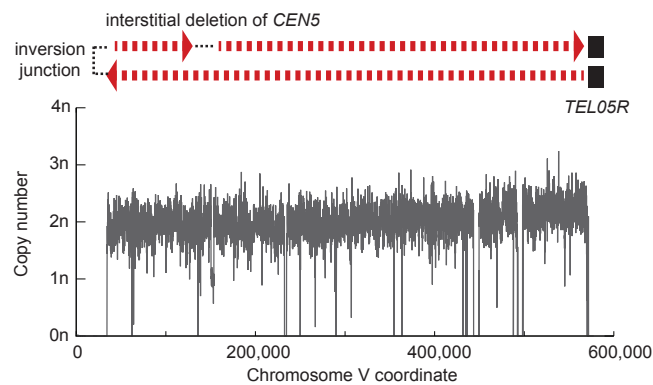
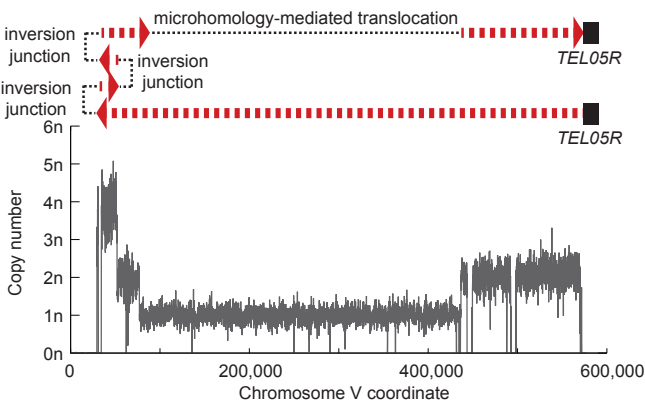


Figure 1 - figure supplement 2 (page 5 of 8)

L. PGSP4853 (*sae2Δ yen1Δ*)



M. PGSP4884 (*sae2Δ rad52Δ*)



chrV 76938+:

```
GCATACTCATTGAGT:GCAGGAGGCTCTTT:
|||||
GCATACTCATTGAGT:GCAGGAGGCTCTTT:TTTGATCTTGAATATC
|||||
:GCAGGAGATCTTT:TTTGATCTTGAATATC
:chrV 436682+
```

N. PGSP4924 (*sae2Δ sgs1Δ yku80Δ*)

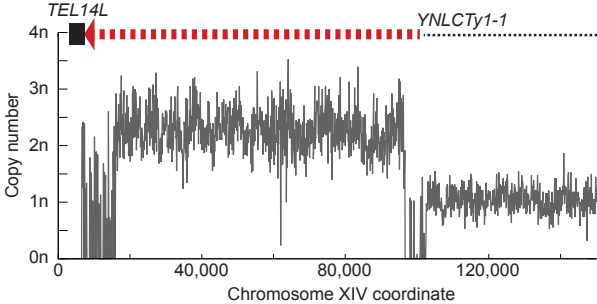
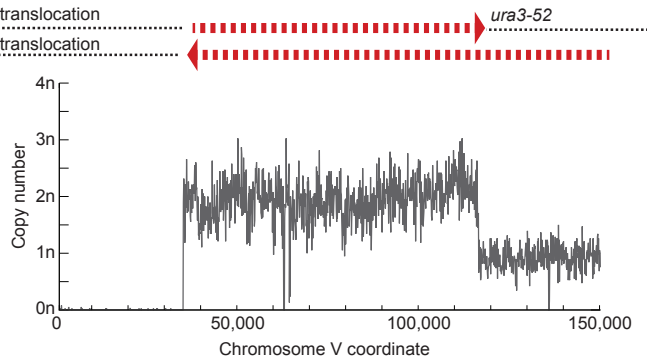
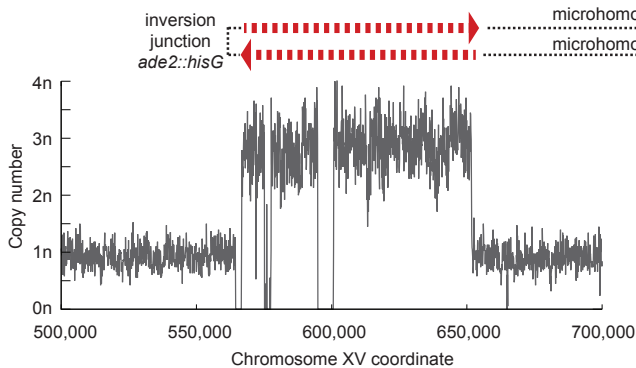
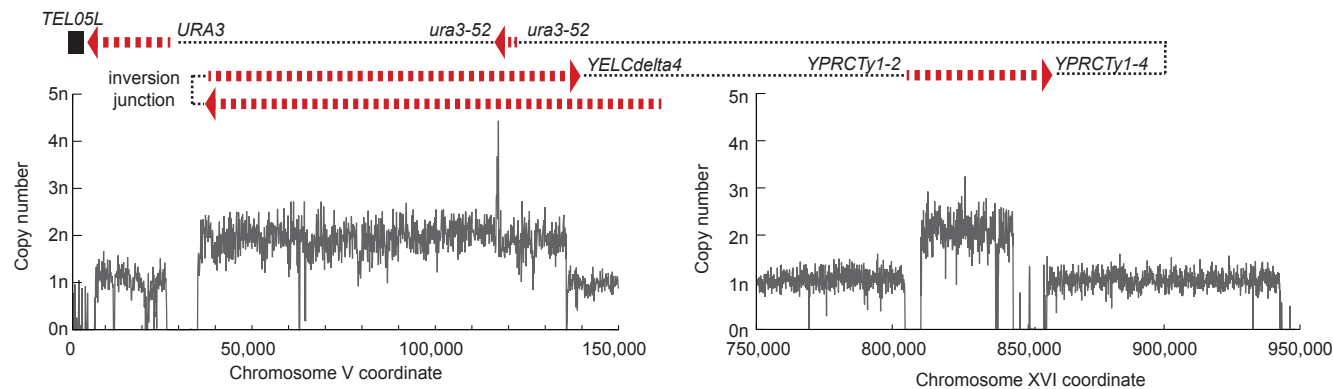
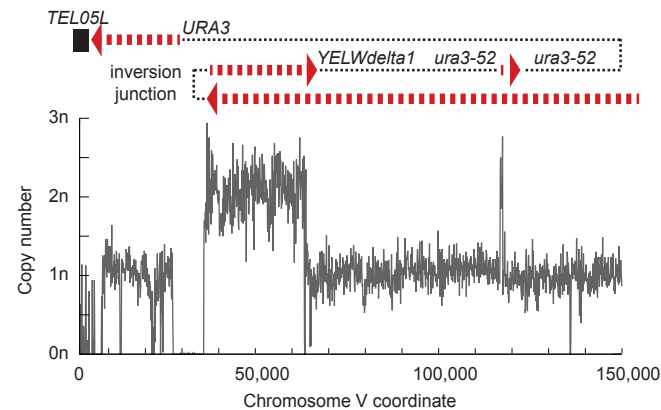


Figure 1 - figure supplement 2 (page 6 of 8)

O. PGSP4982 (*sae2Δ chrV:25,817-1,754*)



P. PGSP4984 (*sae2Δ chrV:25,817-1,754*)



Q. PGSP4995 (*sae2Δ chrV:35,709*)

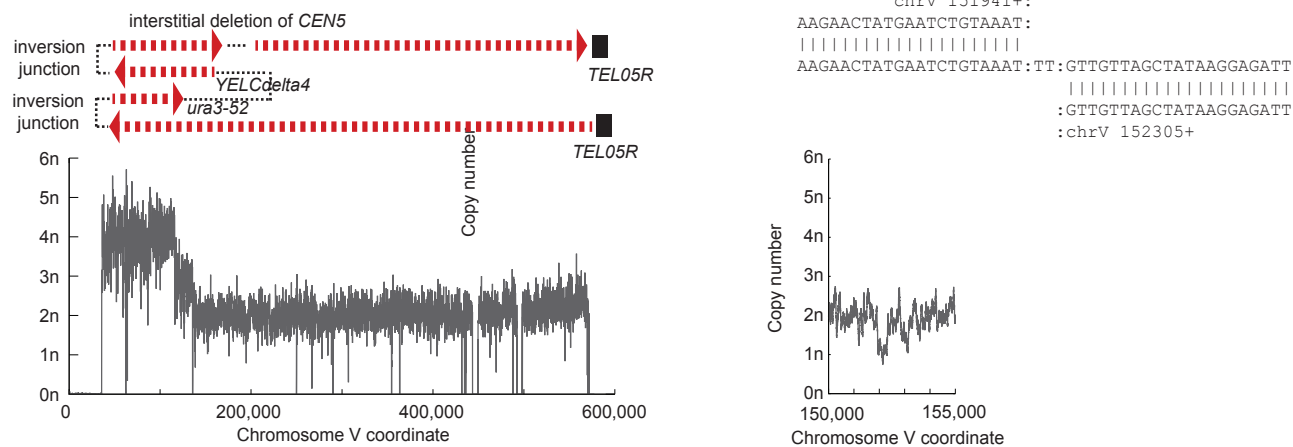
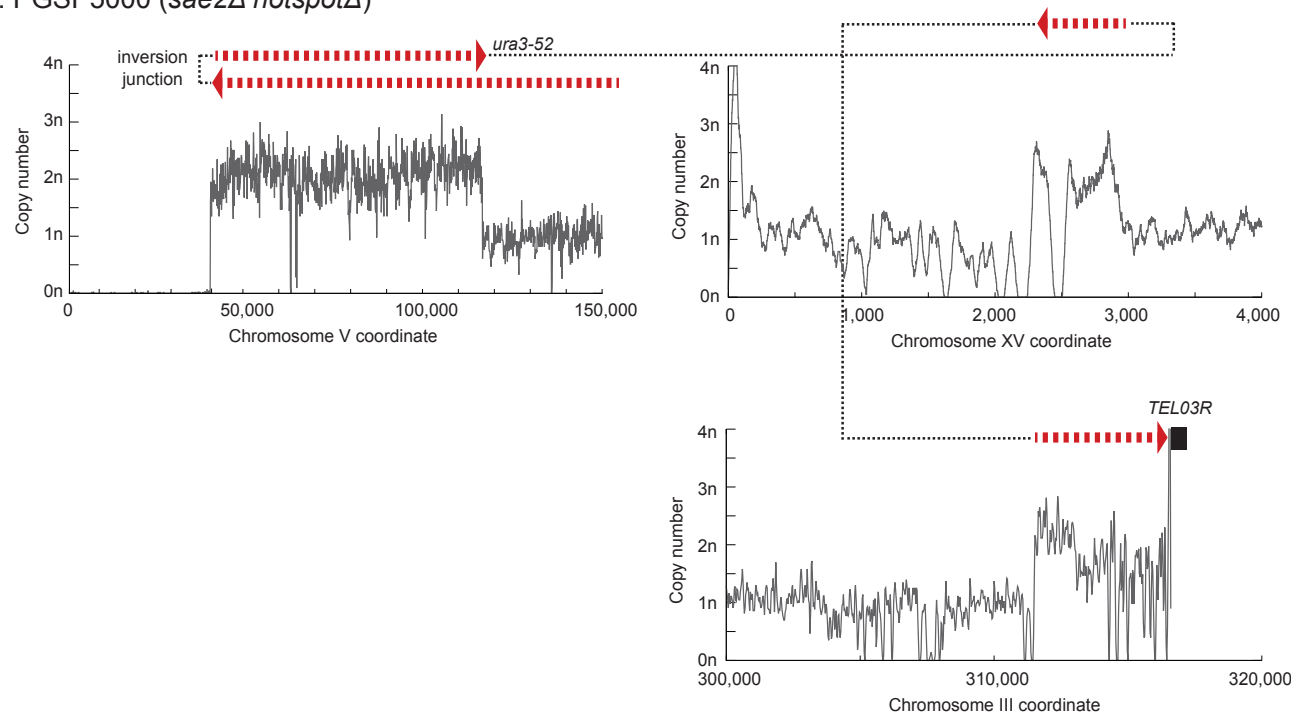
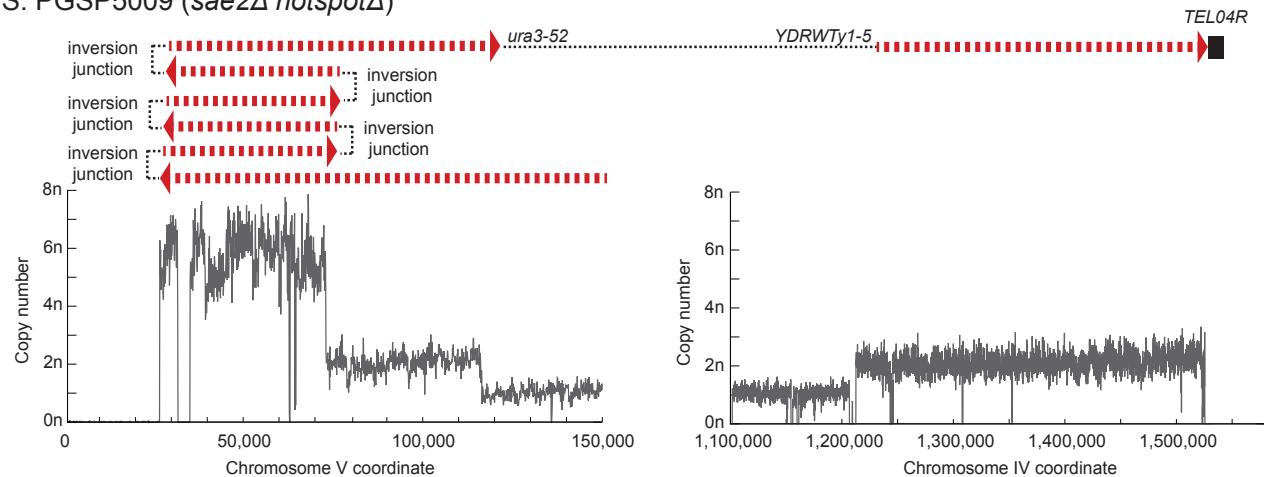


Figure 1 - figure supplement 2 (page 7 of 8)

R. PGSP5000 (*sae2Δ hotspotΔ*)



S. PGSP5009 (*sae2Δ hotspotΔ*)



T. PGSP5047 (*sae2Δ exo1Δ yku80Δ*)

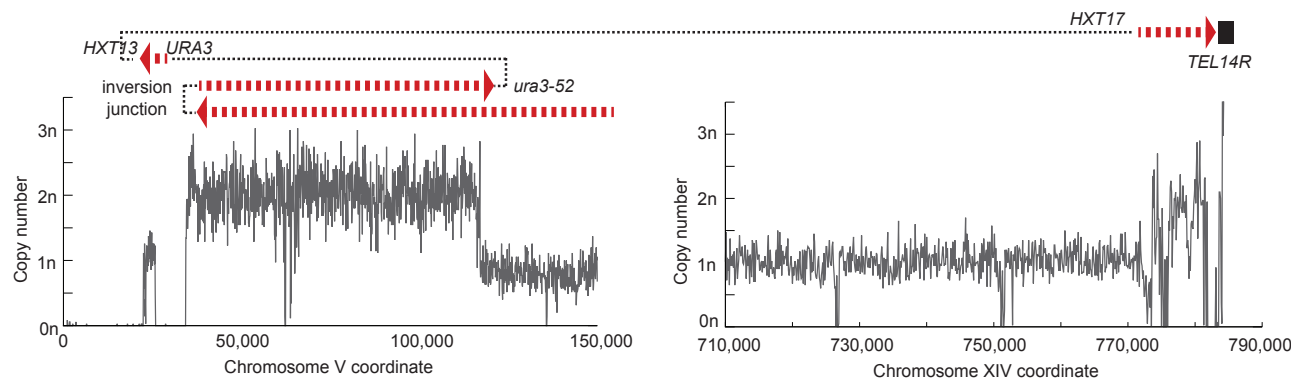


Figure 1 - figure supplement 2 (page 8 of 8)

U. PGSP5054 (*sae2Δ* *exo1Δ* *yku80Δ*)

