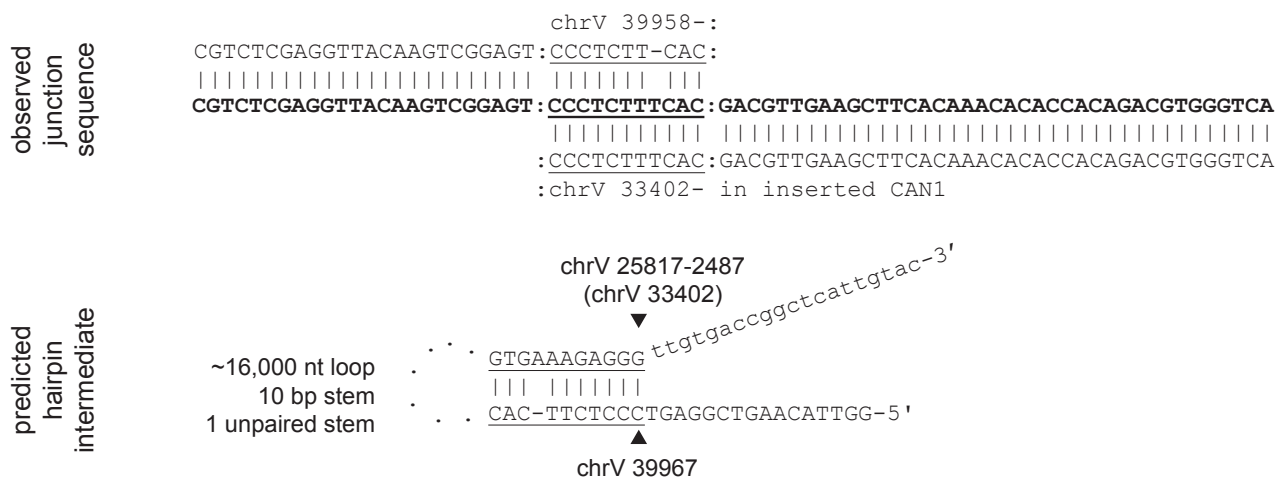


Figure 2 - figure supplement 1 (page 1 of 32)

A. chrV L 25,817-2,487_39,967 hairpin



B. chrV L 25,817-1,749_25,817-1,737 hairpin

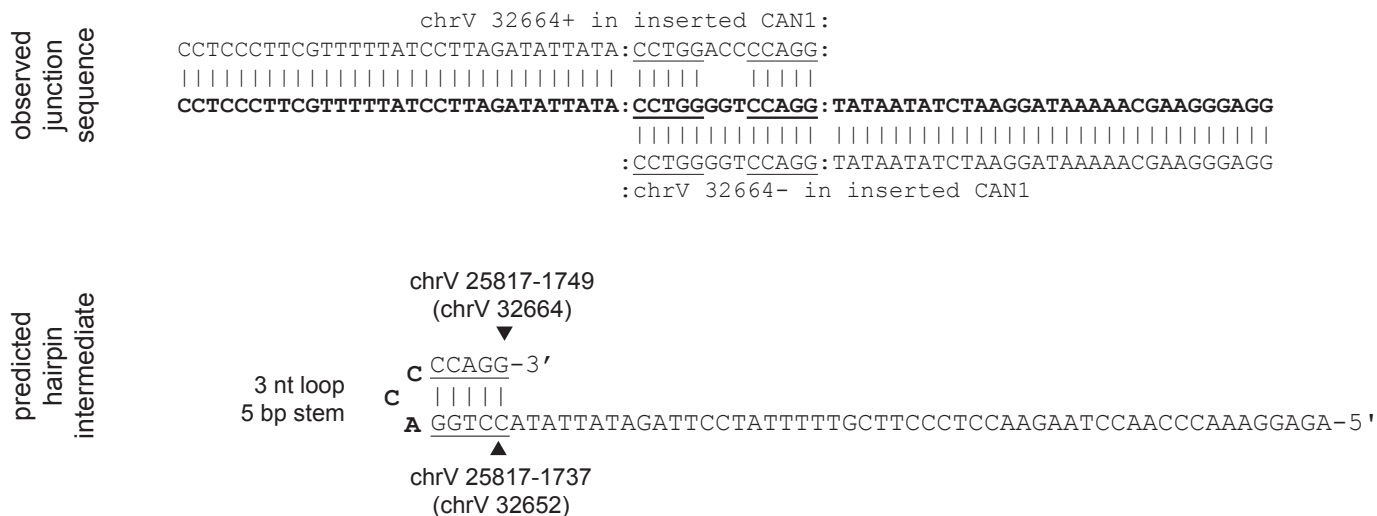
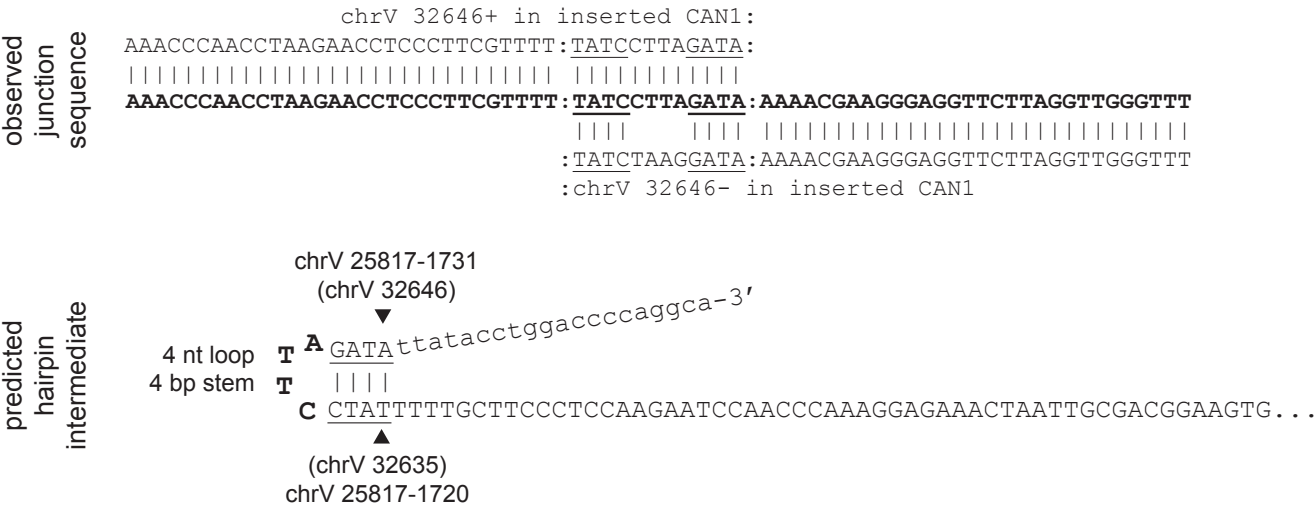


Figure 2 - figure supplement 1 (page 2 of 32)

C. chrV L 25,817-1,731_25,817_-1,720 hairpin



D. chrV L 25,817-1,529_25,817-1,505 hairpin

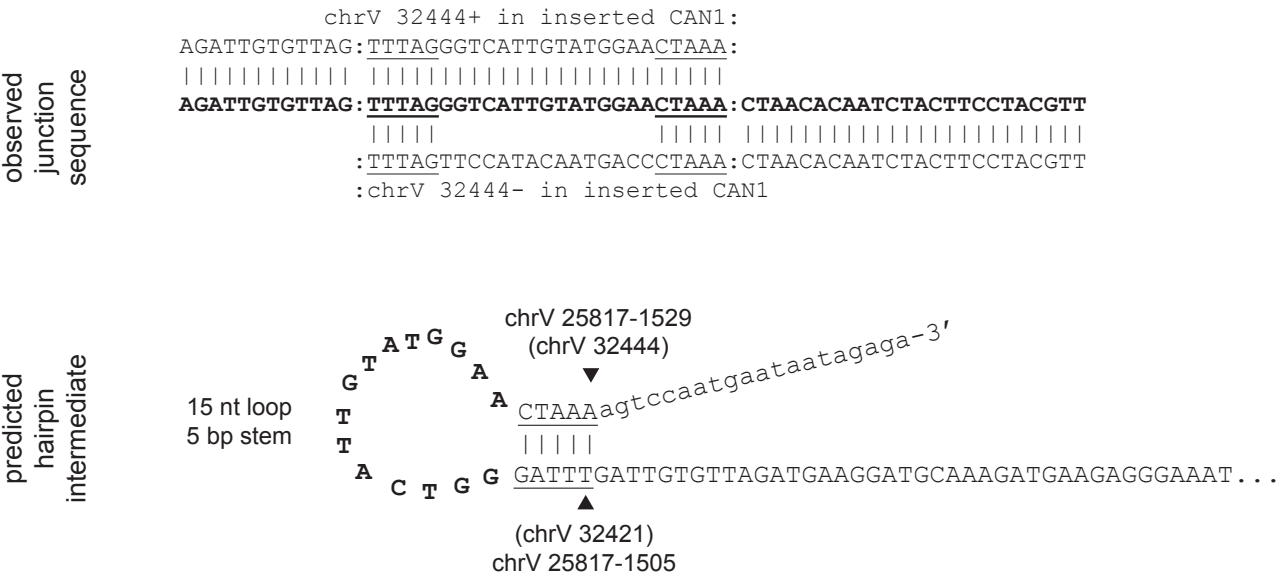
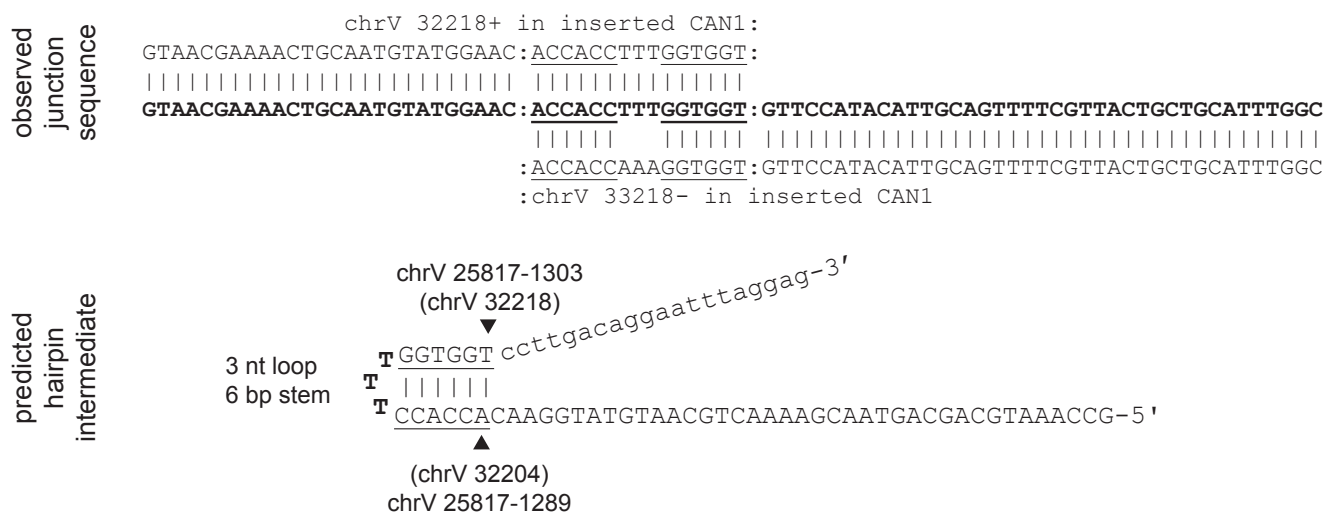


Figure 2 - figure supplement 1 (page 3 of 32)

E. chrV L 25,817-1,303_25,817-1,289 hairpin



F. chrV L 25,817-592_25,817-570 hairpin

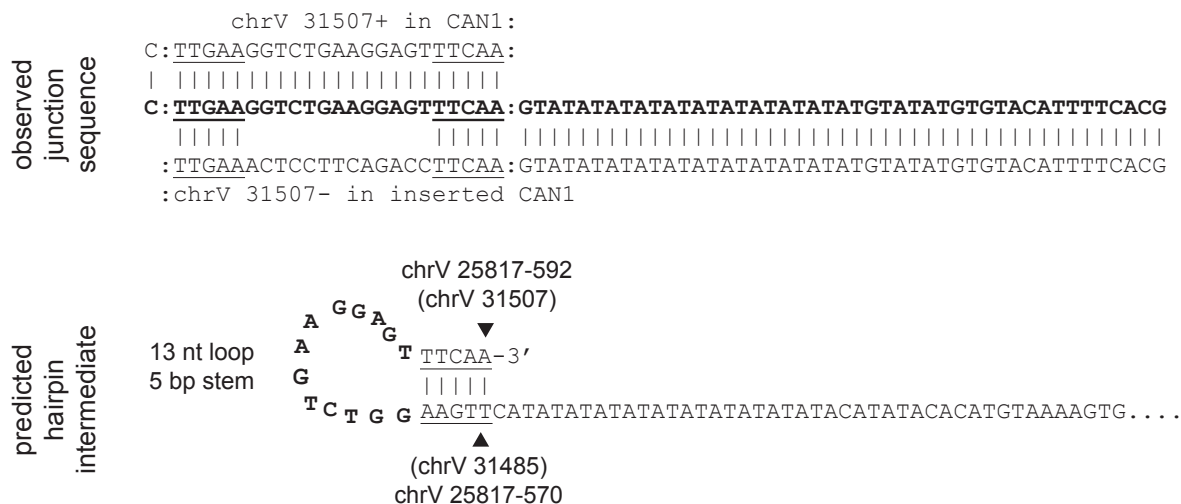
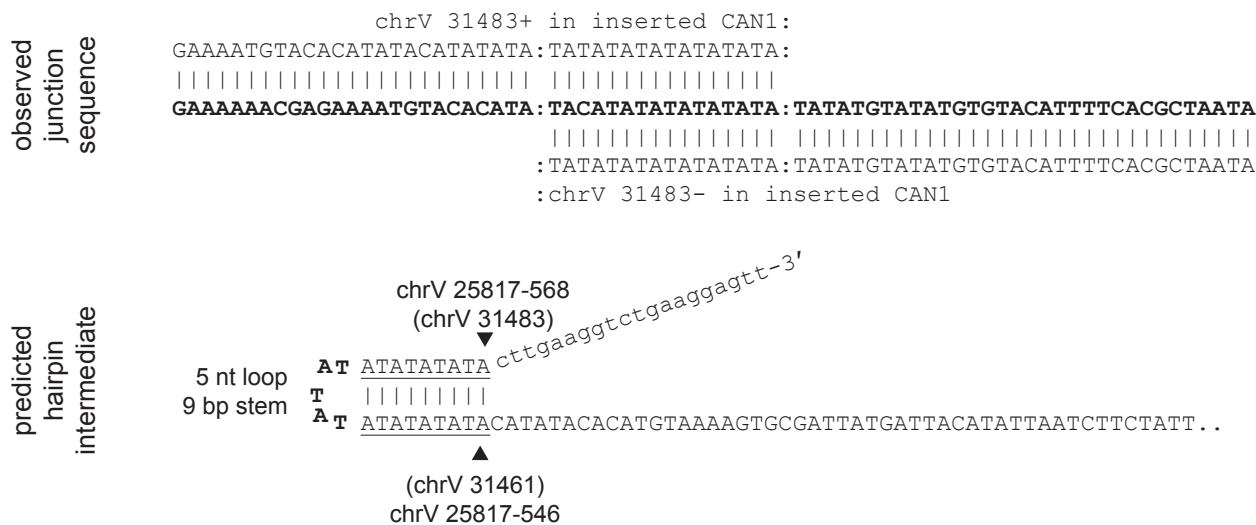


Figure 2 - figure supplement 1 (page 4 of 32)

G. chrV L 25,817-568_25,817-546 hairpin



H. chrV L 25,817-43_25,817-20 hairpin

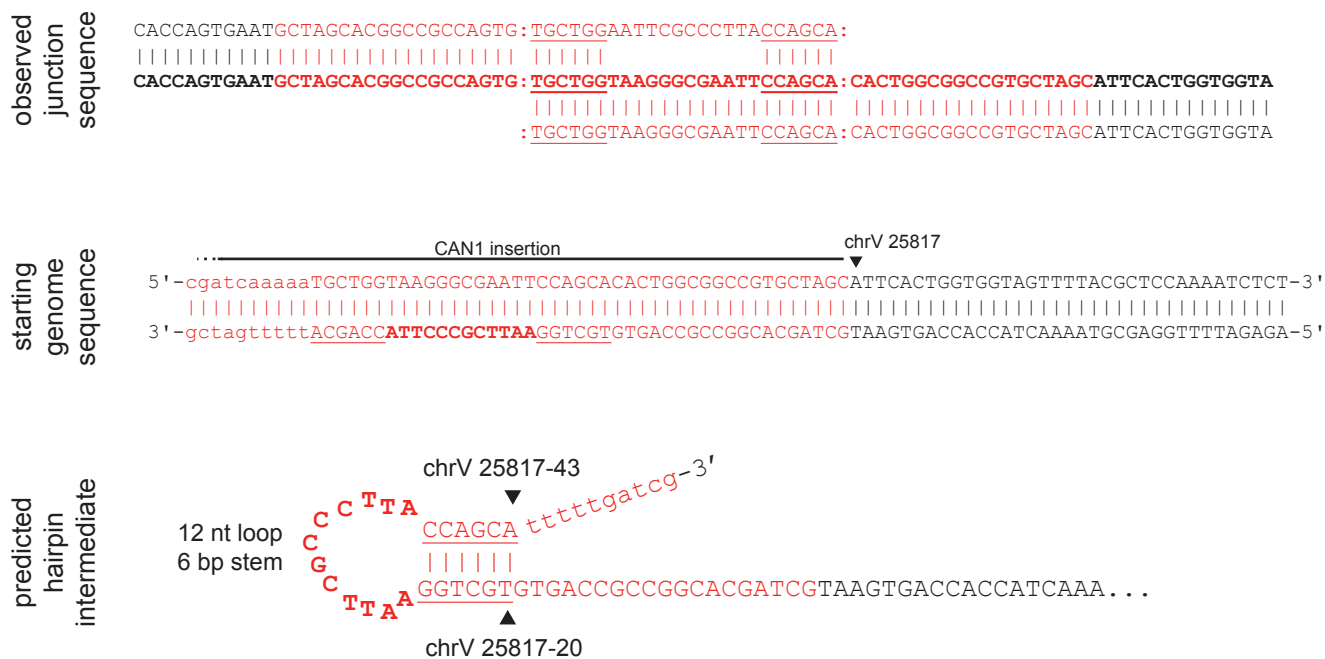
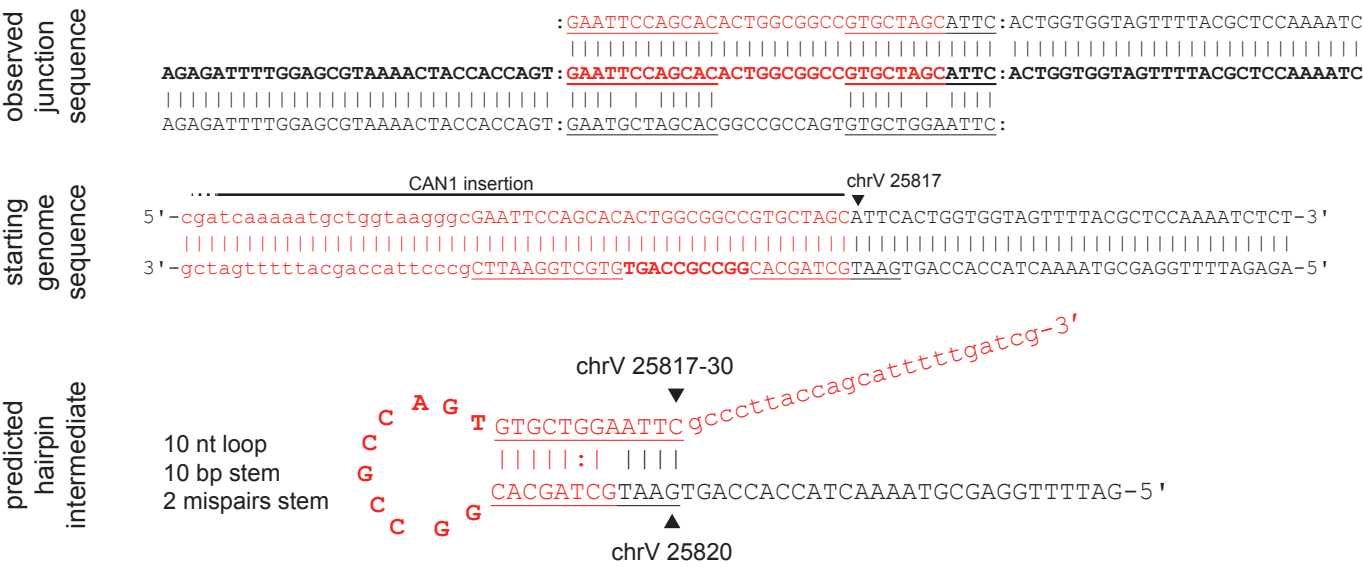


Figure 2 - figure supplement 1 (page 5 of 32)

I. chrV L 25,817-30_25,820 hairpin

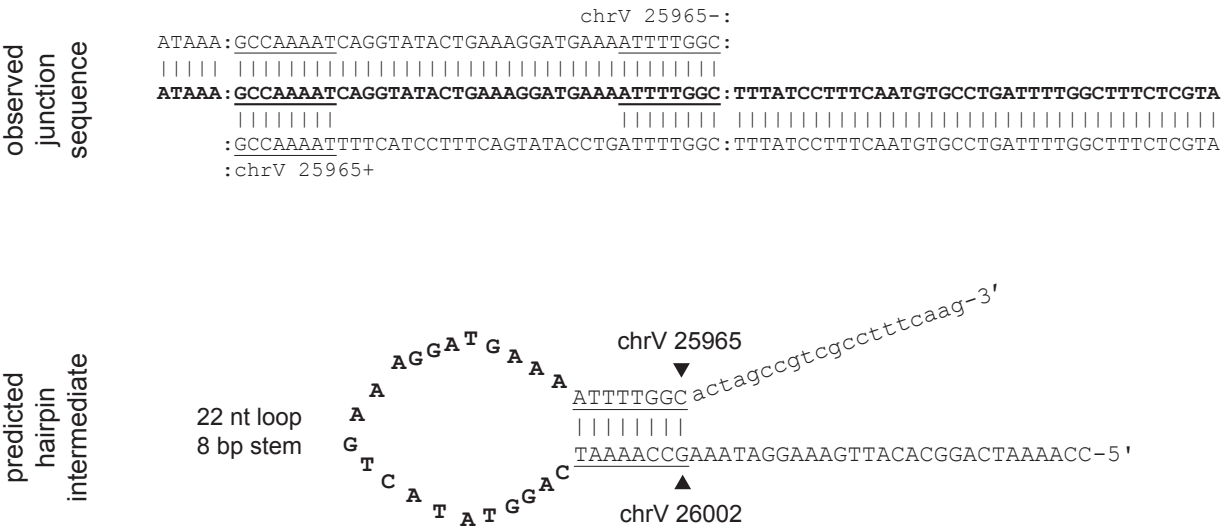


J. chrV L 25,817-25_25,817-14 hairpin



Figure 2 - figure supplement 1 (page 6 of 32)

K. chrV L 25,965_26,002 hairpin



L. chrV L 26,457_26,474 hairpin

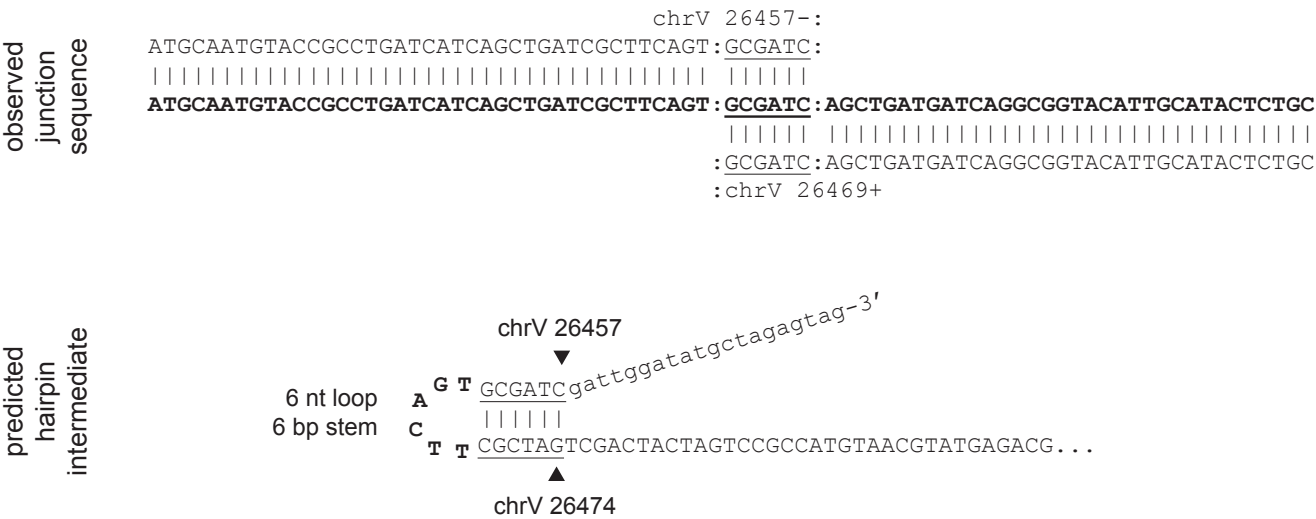
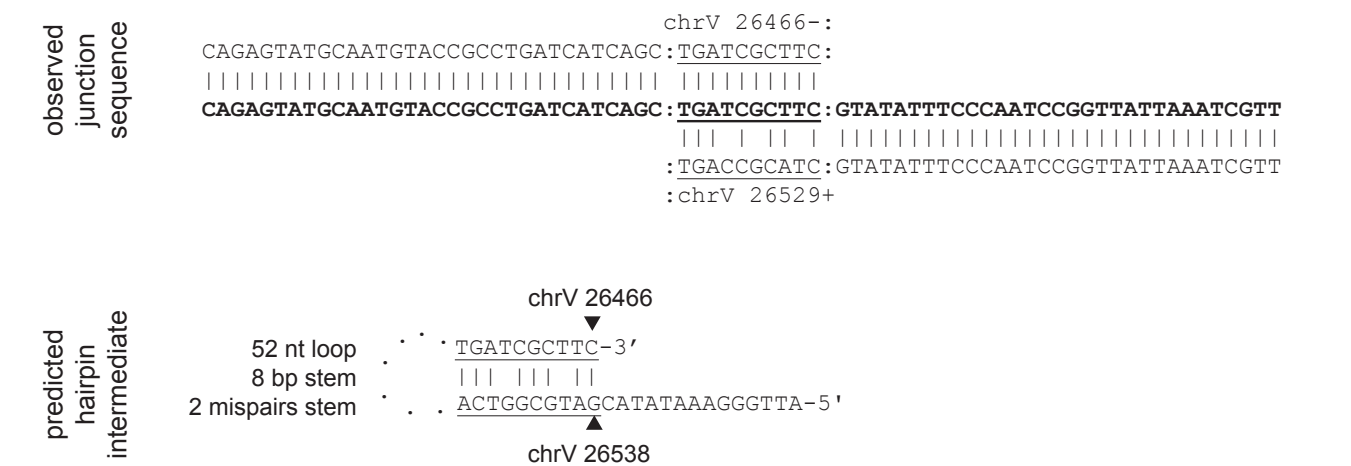


Figure 2 - figure supplement 1 (page 7 of 32)

M. chrV L 26,466_26,538 hairpin



N. chrV L 26,572_28,017 hairpin

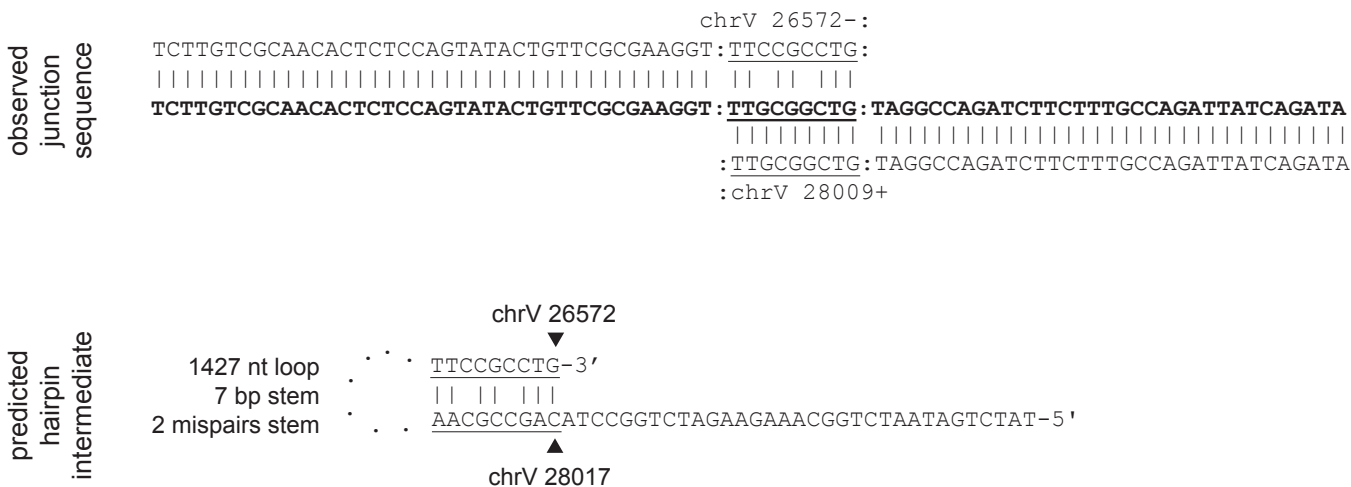
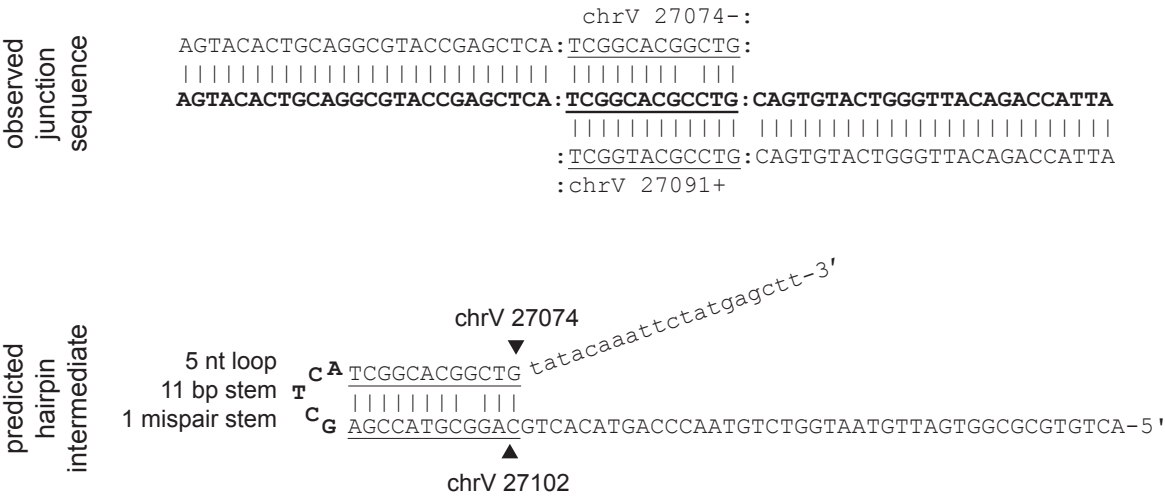


Figure 2 - figure supplement 1 (page 8 of 32)

O. chrV L 27,074_27,102 hairpin



P. chrV L 27,348_27,361 hairpin

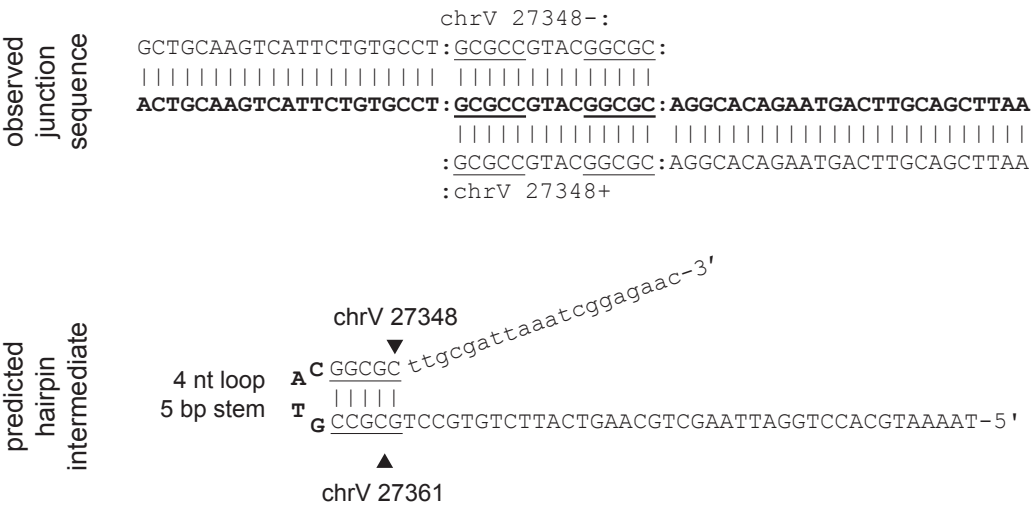
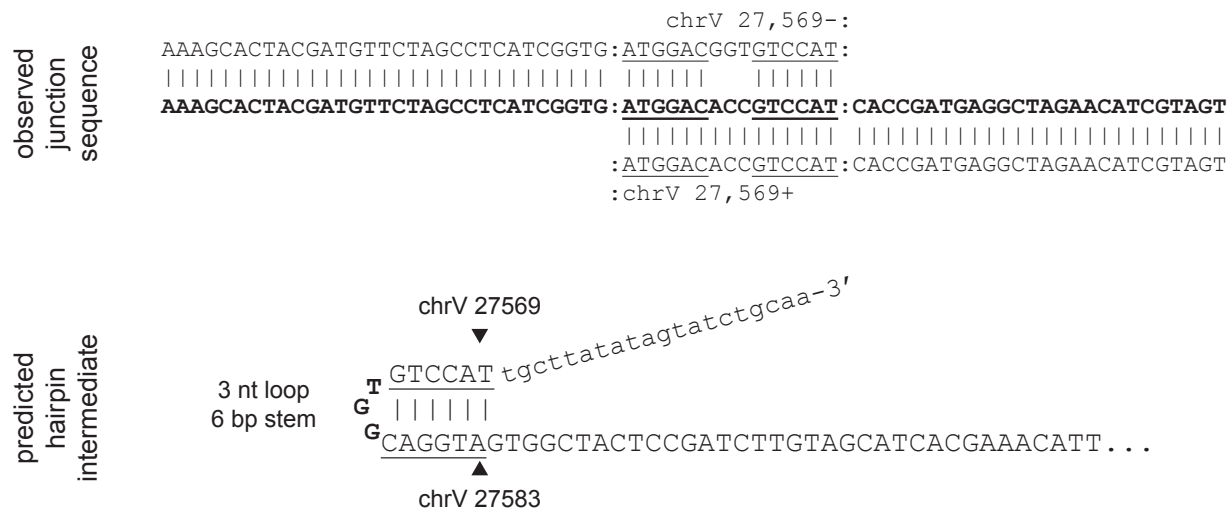


Figure 2 - figure supplement 1 (page 9 of 32)

Q. chrV L 27,569_27,583 hairpin



R. chrV L 28,829_28,849 hairpin

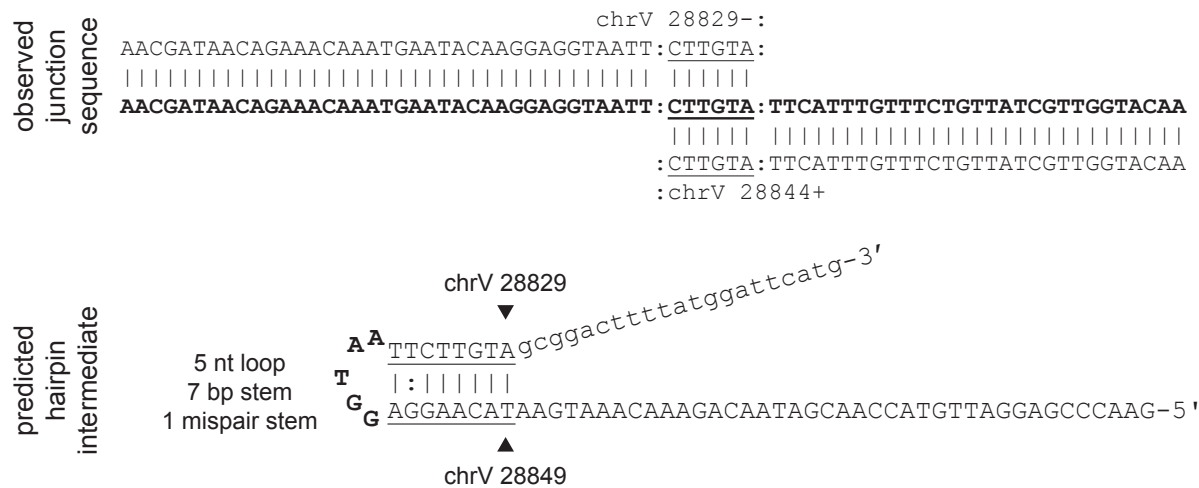
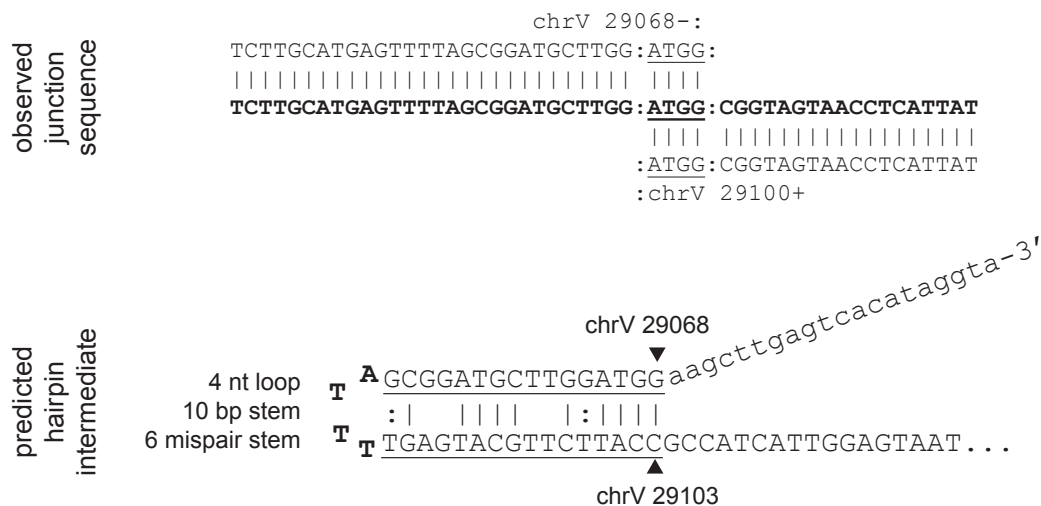


Figure 2 - figure supplement 1 (page 10 of 32)

S. chrV L 29,068_29,103 hairpin



T. chrV L 29,418_29,435 hairpin

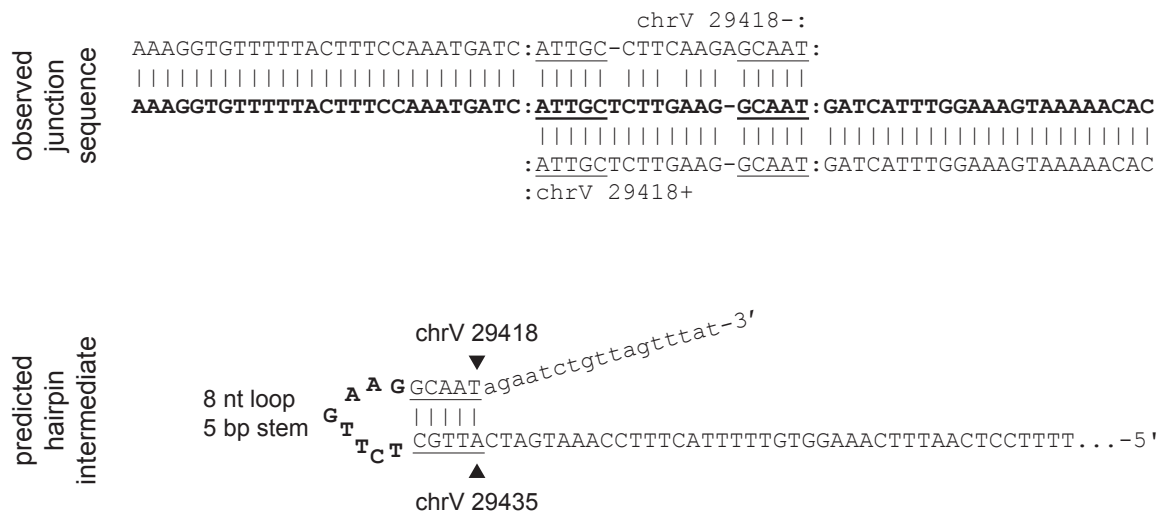
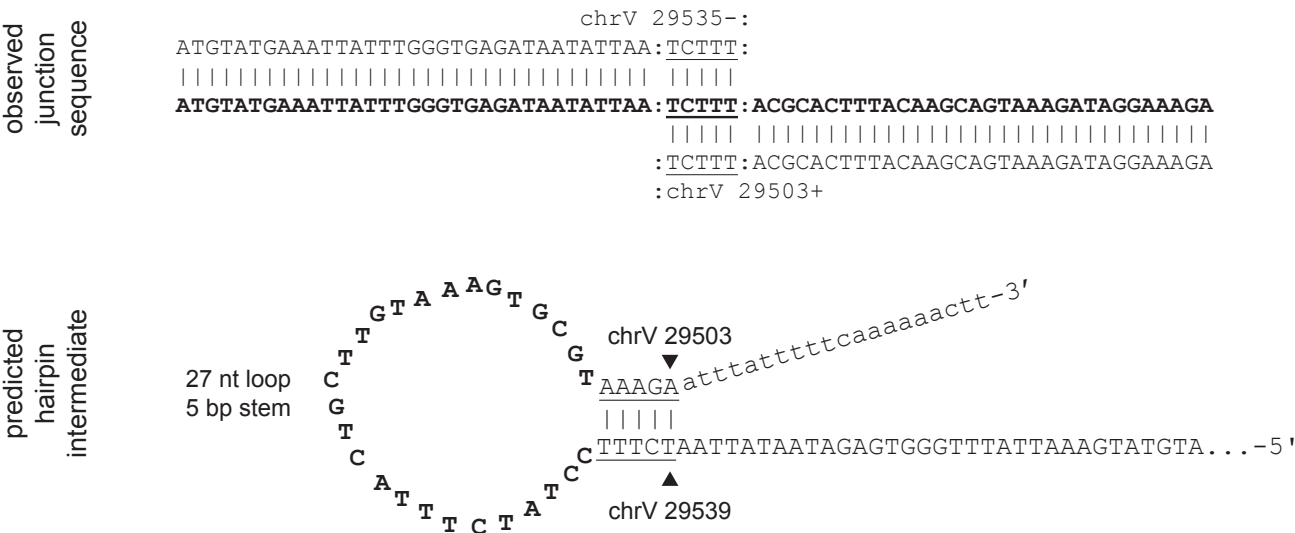


Figure 2 - figure supplement 1 (page 11 of 32)

U. chrV L 29,503_29,539 hairpin



V. chrV L 29,513_29,529 hairpin

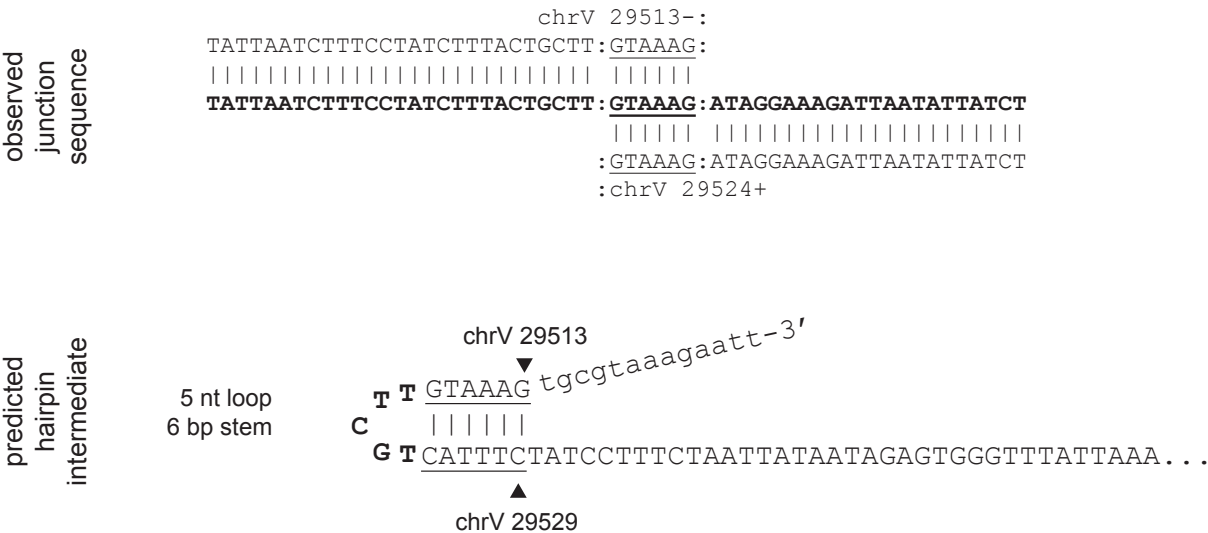
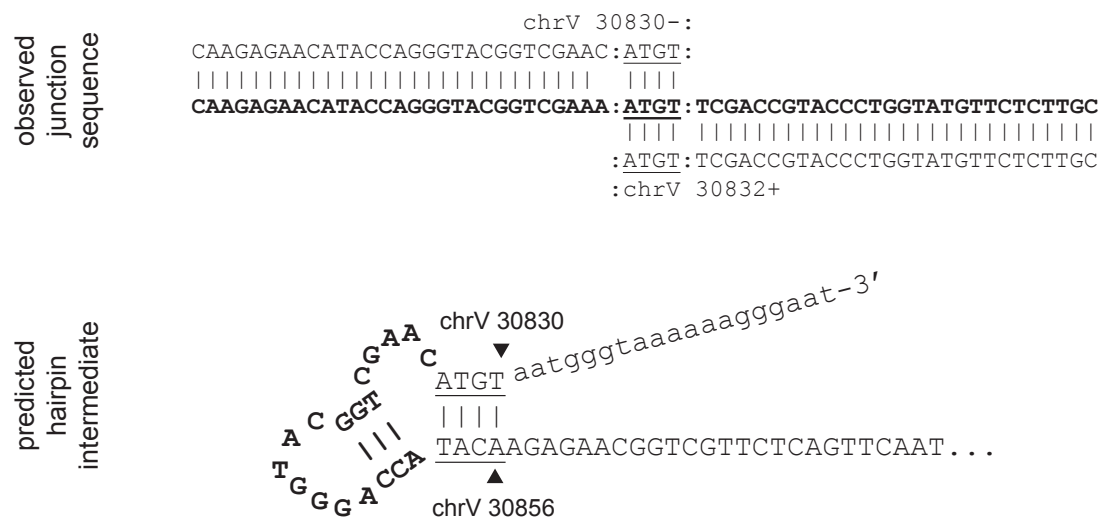


Figure 2 - figure supplement 1 (page 12 of 32)

W. chrV L 30,830_30,856 hairpin



X. chrV L 30,857_30,872 hairpin

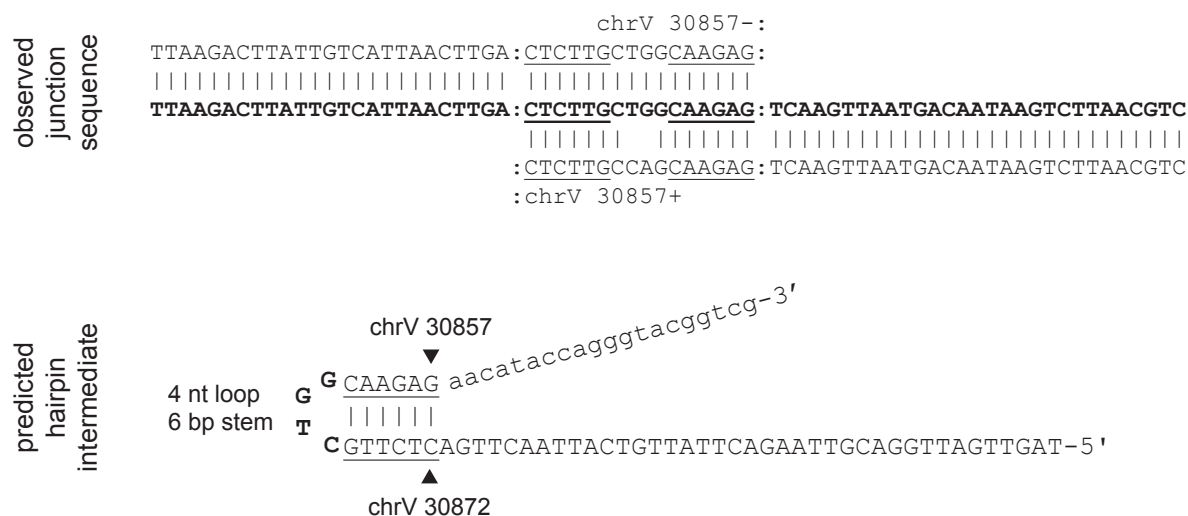


Figure 2 - figure supplement 1 (page 13 of 32)

Y. chrV L 34,339-1,219_34,339-501 hairpin



Z. chrV L 34,339-1,211_34,339-1,196 hairpin



Figure 2 - figure supplement 1 (page 14 of 32)

AA. chrV L 34,339-1,126_34,339-1,028 hairpin

observed
junction
sequence

GCCTGATGGCGCTGCGCTTATCAGGCCTACGTAATGCGTTGATATTTT : GGGTTCTGTAGGCC :
|||||
GCCTGATGGCGCTGCGCTTATCAGGCCTACGTAATGCGTTGATATTTT : GGGTTCTGTAGGCC : TGATAAGCGCAGCGCCATCAGGCG
| : |||
: GCATTACGTAGGCC : TGATAAGCGCAGCGCCATCAGGCG

predicted
hairpin
intermediate

chrV 34339-1126

12 nt loop A T T T
10 bp stem T A | : | | : | | | |
4 mispairs stem G T T G CGTAATGCATCCGGACTATTCGCGTCGCGGTAGTCCGCAGTCTAGTGAGGTAGTAGAAG-5'

chrV 34339-1028

AB. chrV L 34,339-1,091_34,339-1,066 hairpin

observed junction sequence

hisG:
TCTGGTACTGCCGATCGAGAAGATGATGGAGTGATCTG:ACGCCTGAT:
|||||
TCTGGTACTGCCGATCGAGAAGATGATGGAGTGATCTG:ACGCCTGAT:AAGCGCAGCGCCATCAGGCGTCAGATCACTCCAT
|||||
:ACGCCTGAT:AAGCGCAGCGCCATCAGGCGTCAGATCACTCCAT
:hisG

predicted hairpin intermediate

3 nt loop
10 bp stem
1 mispair stem
1 unpaired stem

chrV 34339-1091

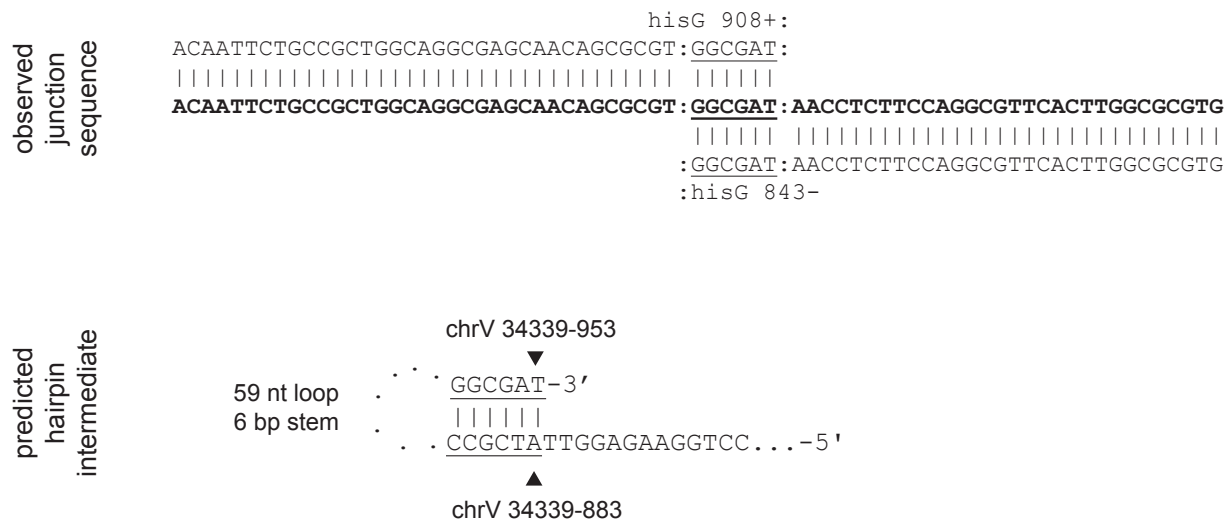
chrV 34339-1066

T G CGCTTATCAGGC ctacgtaatgcgttgatattt-3'

C GCG-GTAGTCCGCAGTCTAGTGAGGTAGTAGAAGAGCTAGCCGTCATGGTCTTAG-5'

Figure 2 - figure supplement 1 (page 15 of 32)

AC. chrV L 34,339-953_34,339-883 hairpin



AD. chrV L 34,339-931_34,339-919 hairpin

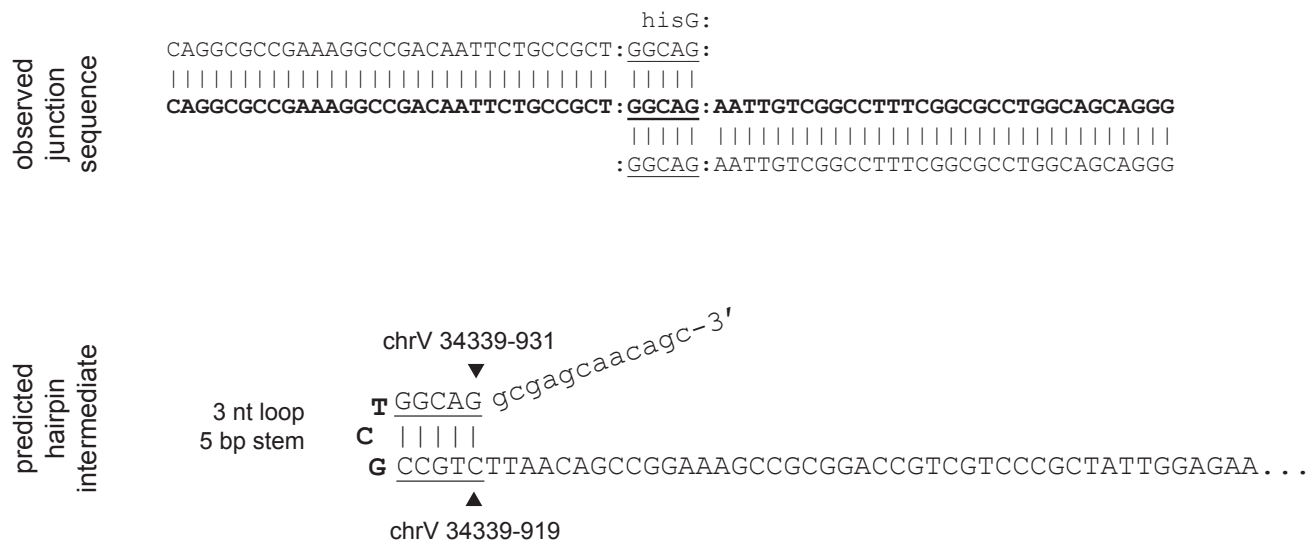
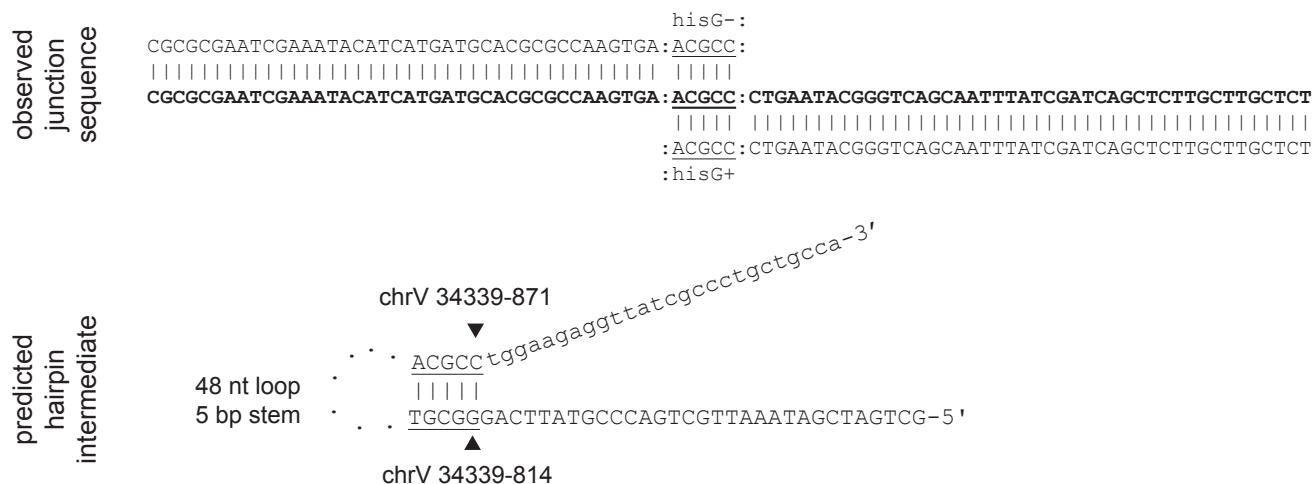


Figure 2 - figure supplement 1 (page 16 of 32)

AE. chrV L 34,339-871_34,339-814 hairpin



AF. chrV L 34,339-640_34,339-630 hairpin

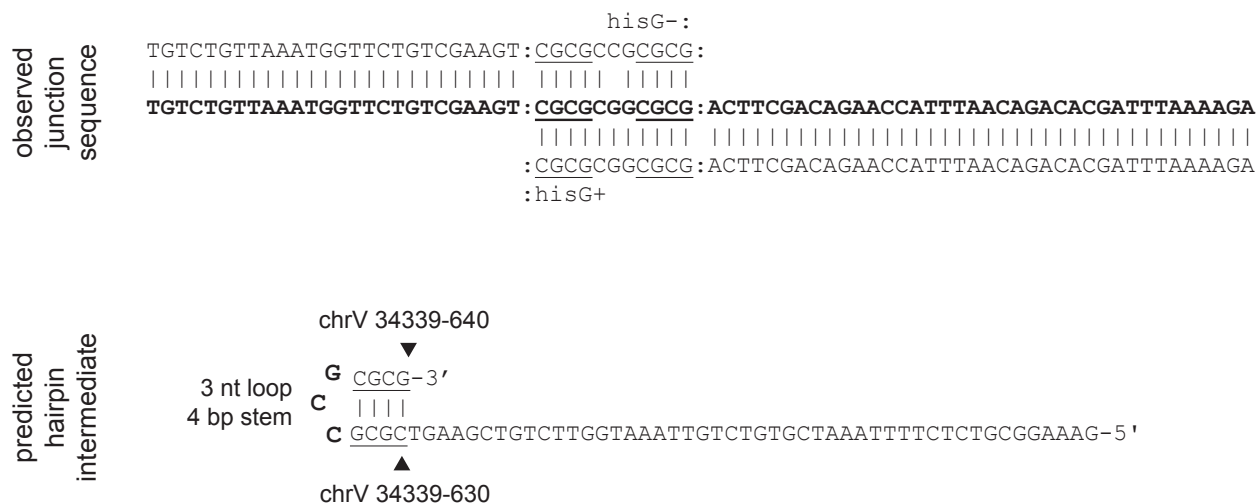
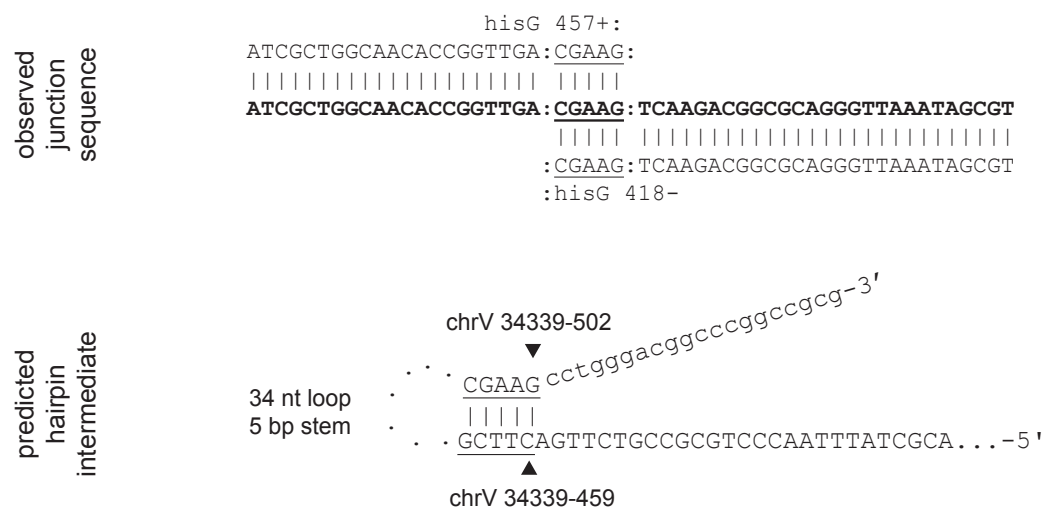


Figure 2 - figure supplement 1 (page 17 of 32)

AG. chrV L 34,339-502_34,339-459 hairpin

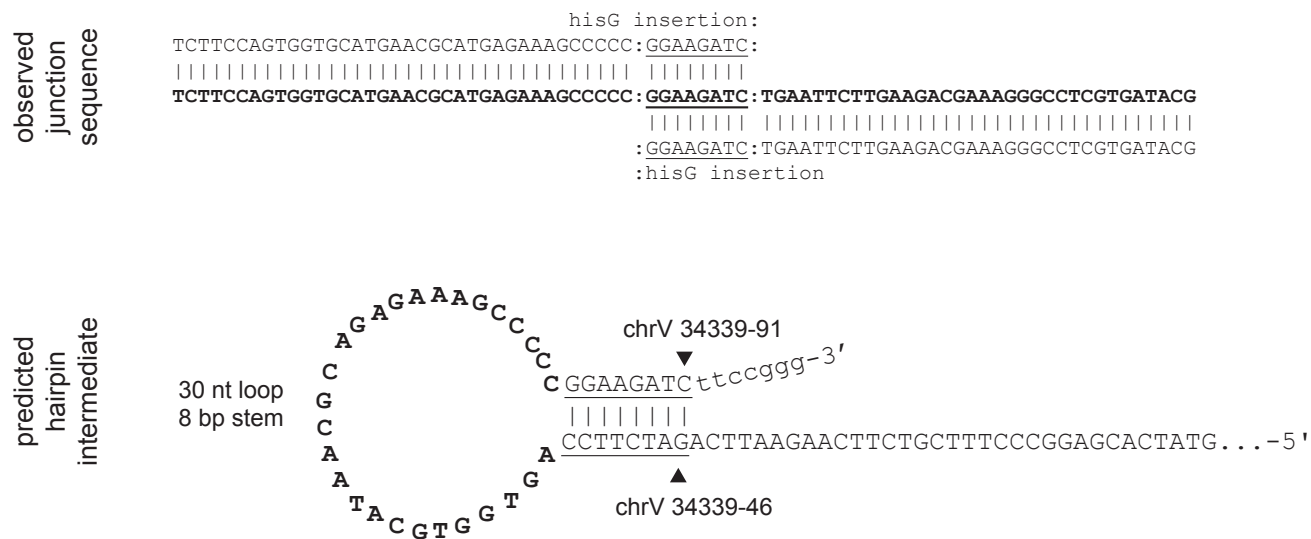


AH. chrV L 34,339-107_34,339-75 hairpin



Figure 2 - figure supplement 1 (page 18 of 32)

AI. chrV L 34,339-91_34,338-46 hairpin



AJ. chrV L 34,759_36,909 hairpin

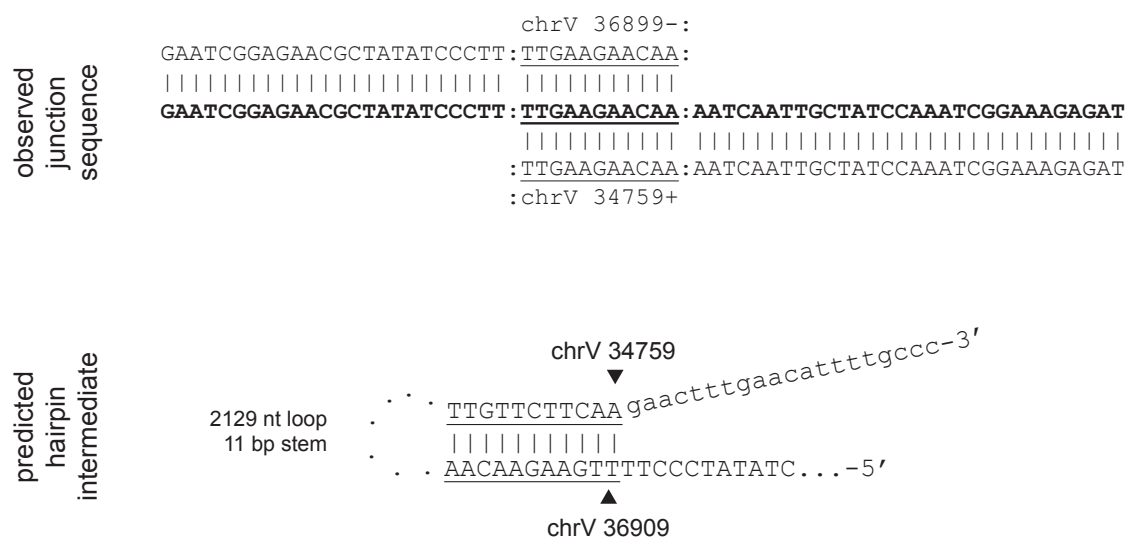
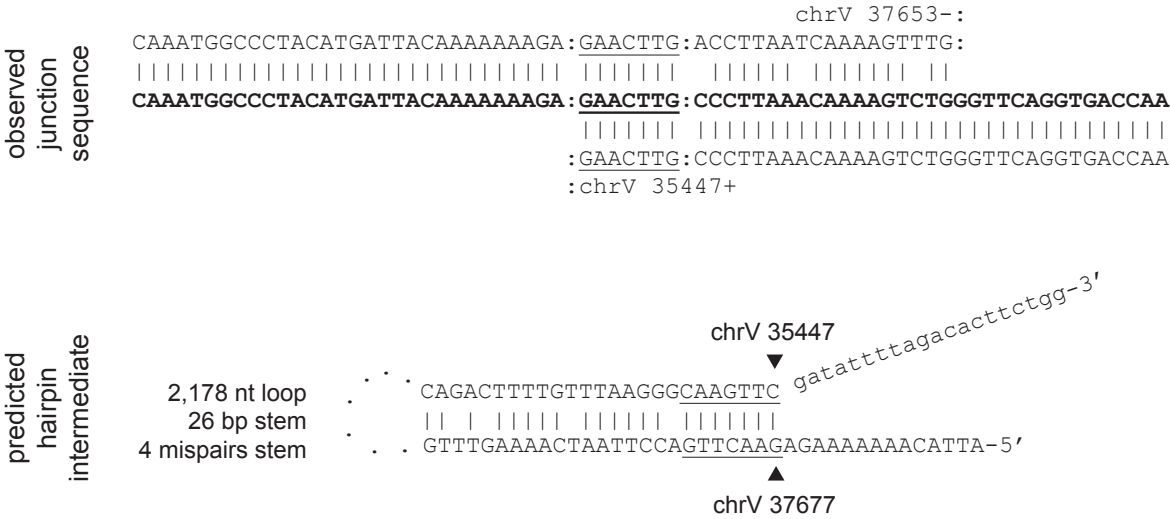


Figure 2 - figure supplement 1 (page 19 of 32)

AK. chrV L 35,447_37,677 hairpin



AL. chrV L 35,478_35,494 hairpin

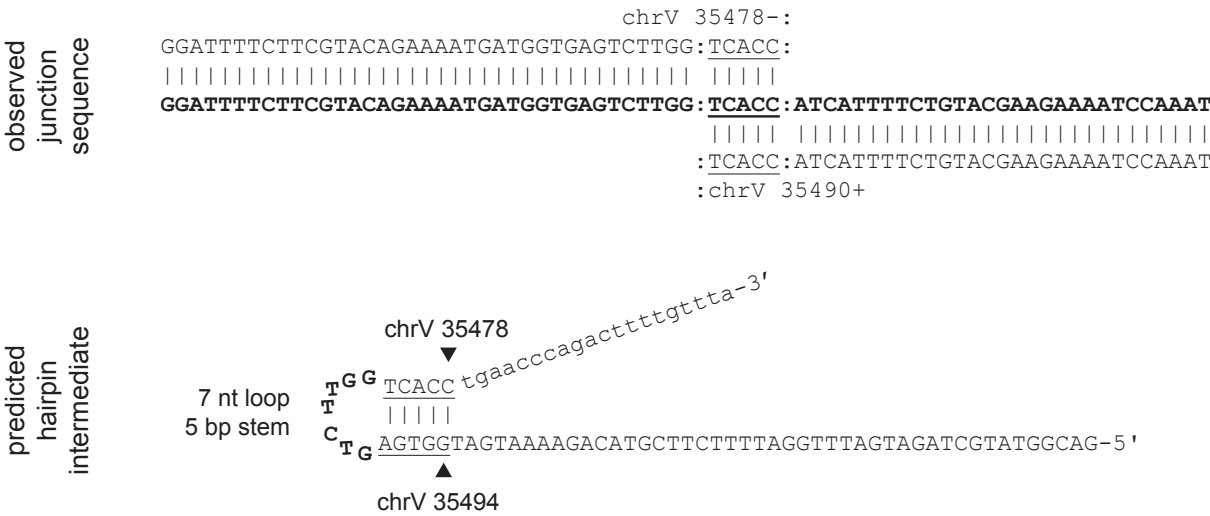
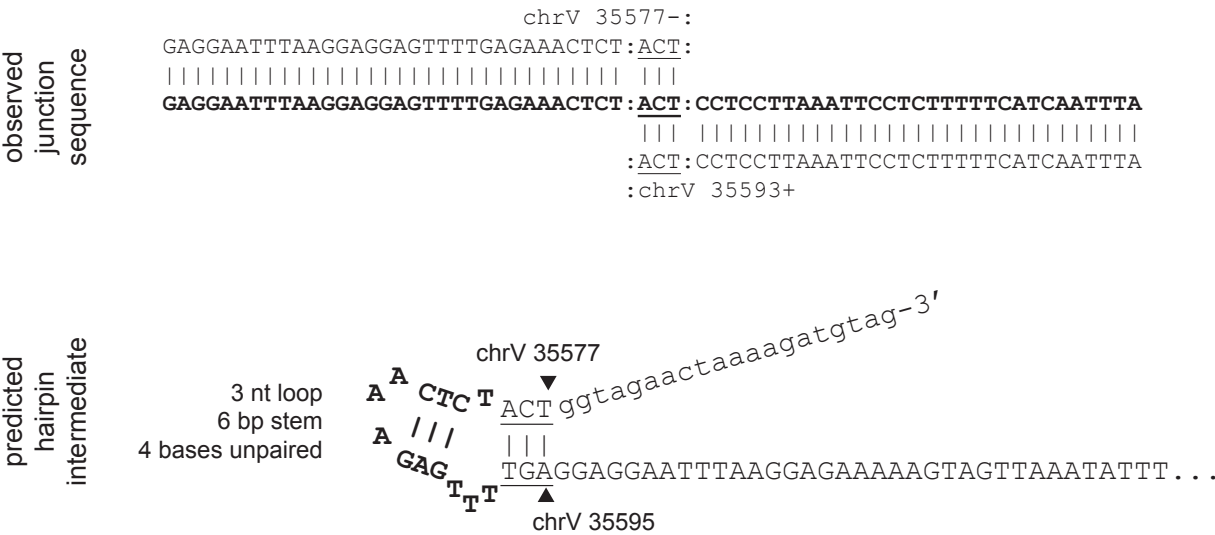


Figure 2 - figure supplement 1 (page 20 of 32)

AM. chrV L 35,577_35,595 hairpin



AN. chrV L 35,581_35,596 hairpin

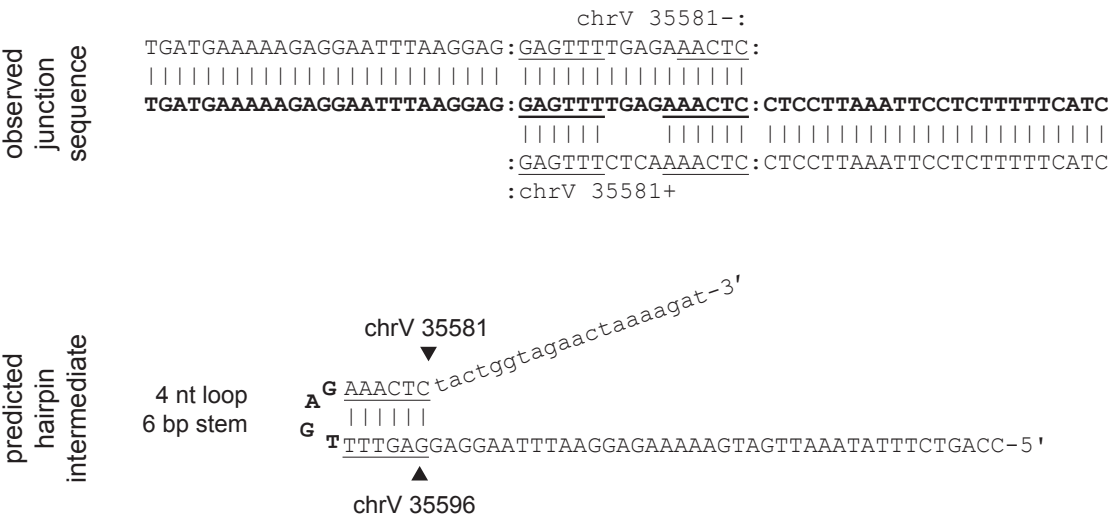
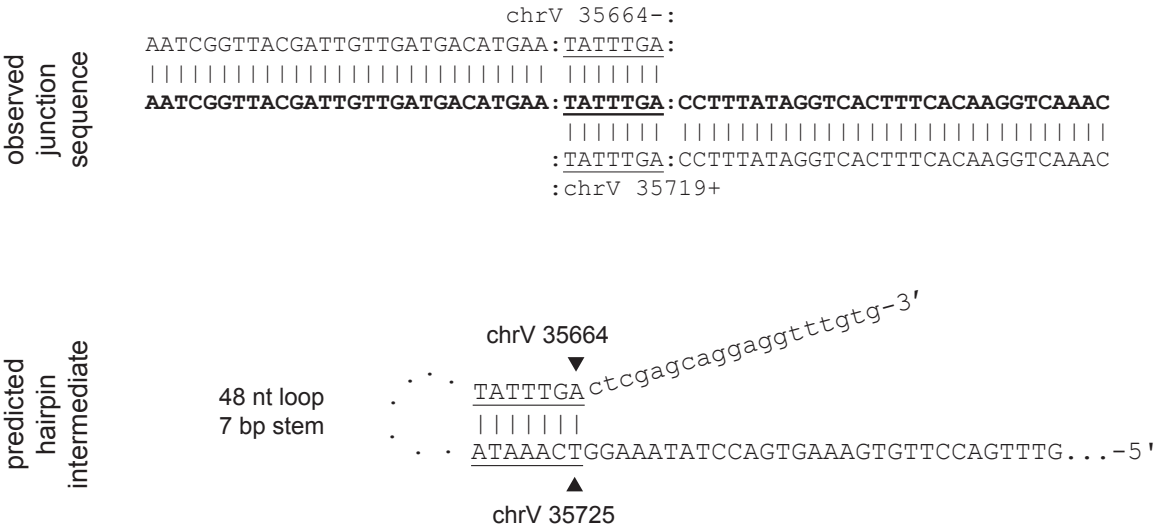


Figure 2 - figure supplement 1 (page 21 of 32)

AO. chrV L 35,664_35,725 hairpin



AP. chrV L 35,685_35,698 hairpin

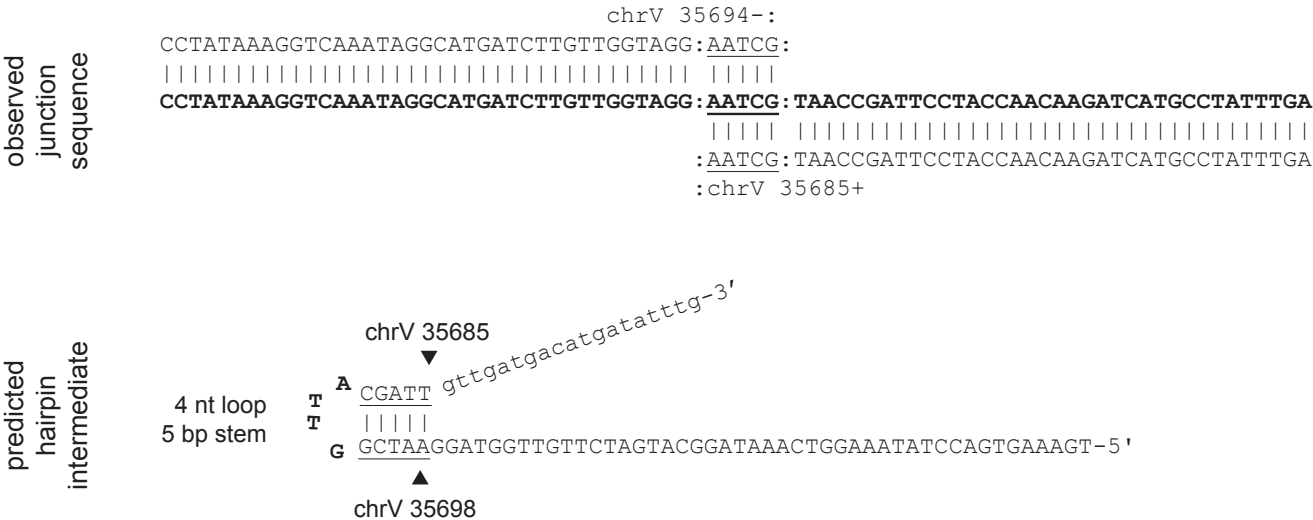
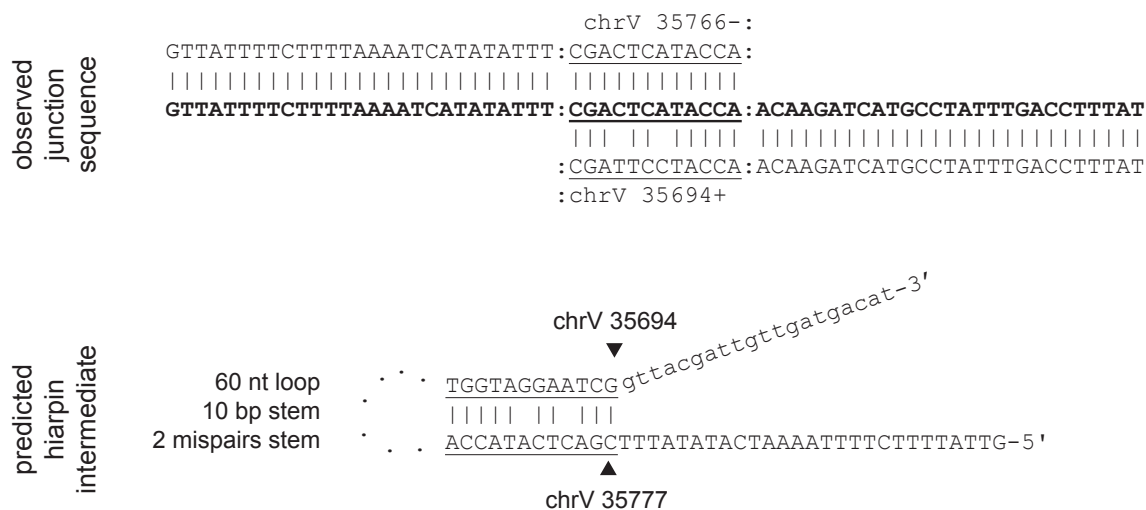


Figure 2 - figure supplement 1 (page 22 of 32)

AQ. chrV L 35,694_35,777 hairpin



AR. chrV L 35,721_35,754 hairpin

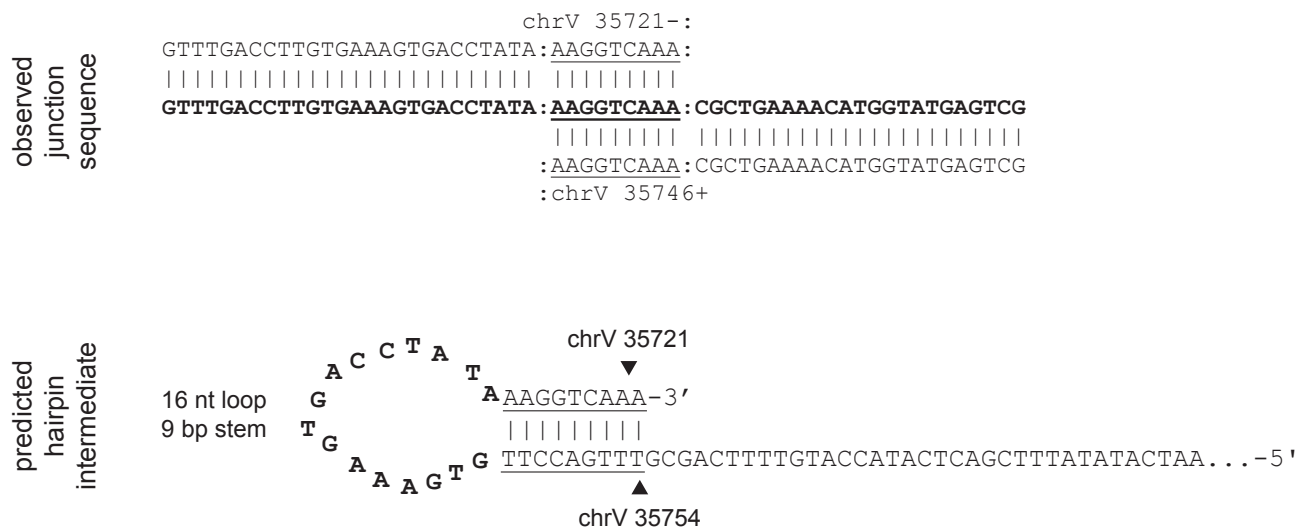
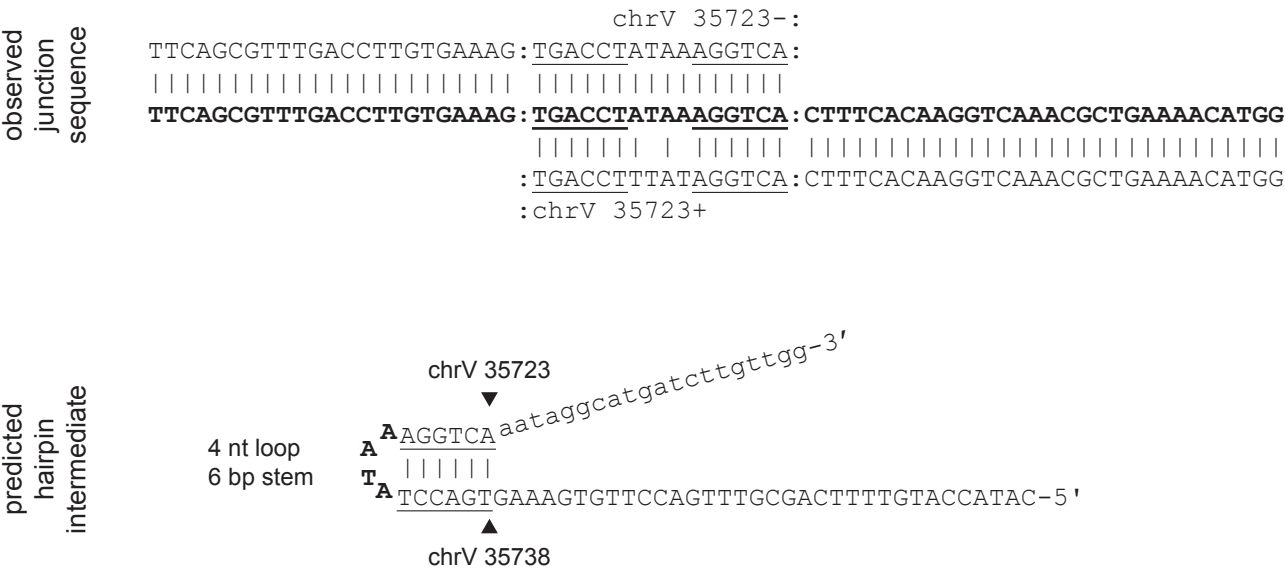


Figure 2 - figure supplement 1 (page 23 of 32)

AS. chrV L 35,723_35,738 hairpin



AT. chrV L 35,837_35,872 hairpin

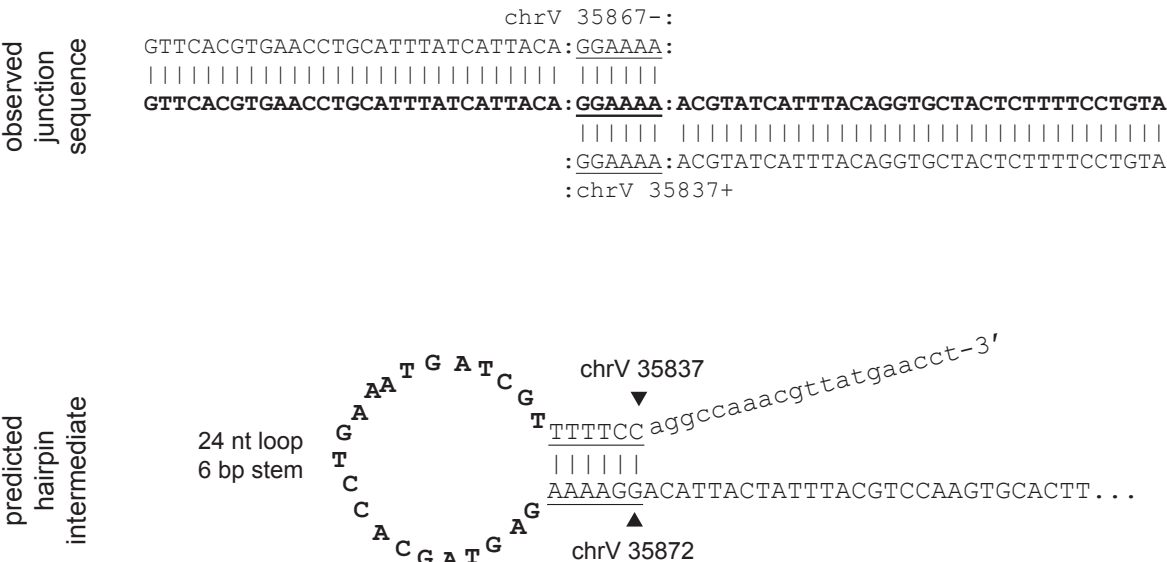
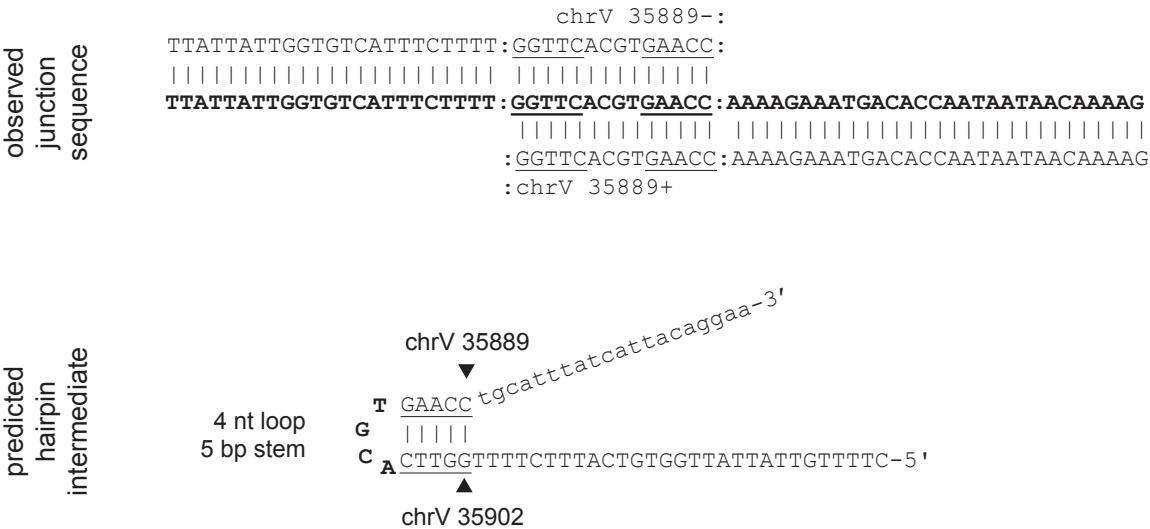


Figure 2 - figure supplement 1 (page 24 of 32)

AU. chrV L 35,889_35,902 hairpin



AV. chrV L 37,132_37,150 hairpin

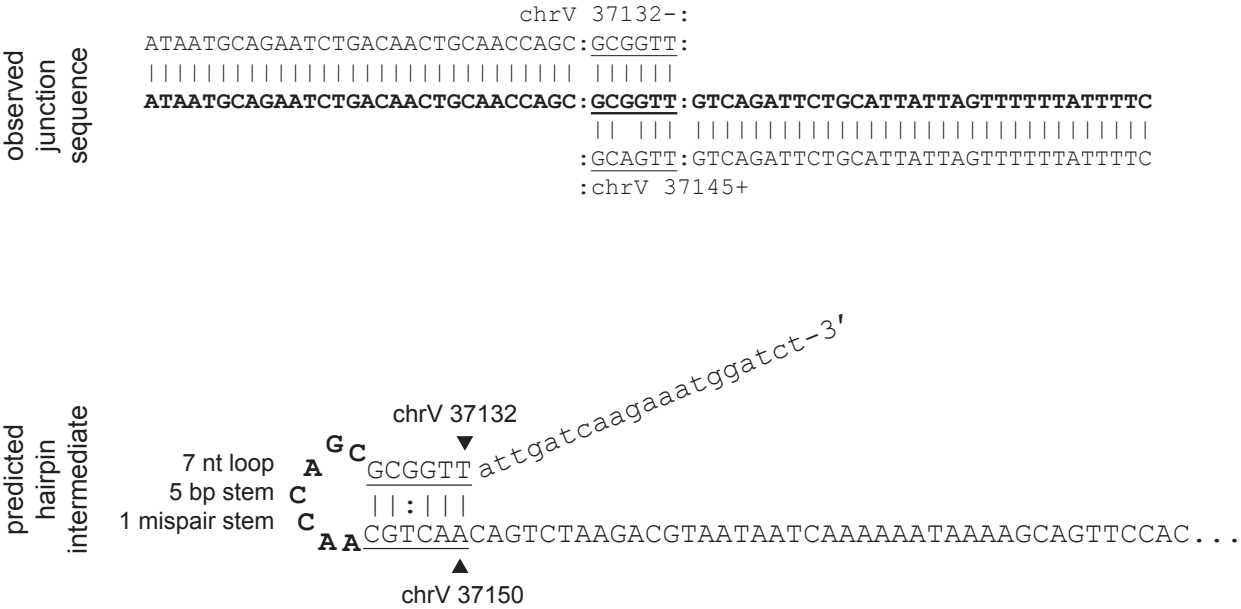
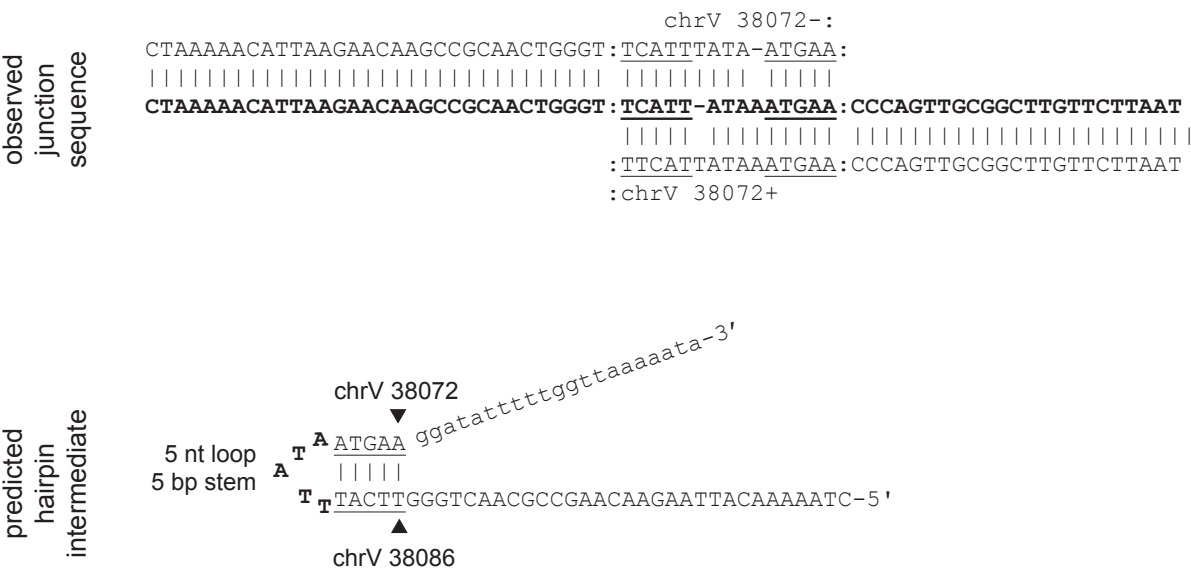


Figure 2 - figure supplement 1 (page 25 of 32)

AW. chrV L 38,072_38,086 hairpin



AX. chrV L 38,848_38,871 hairpin

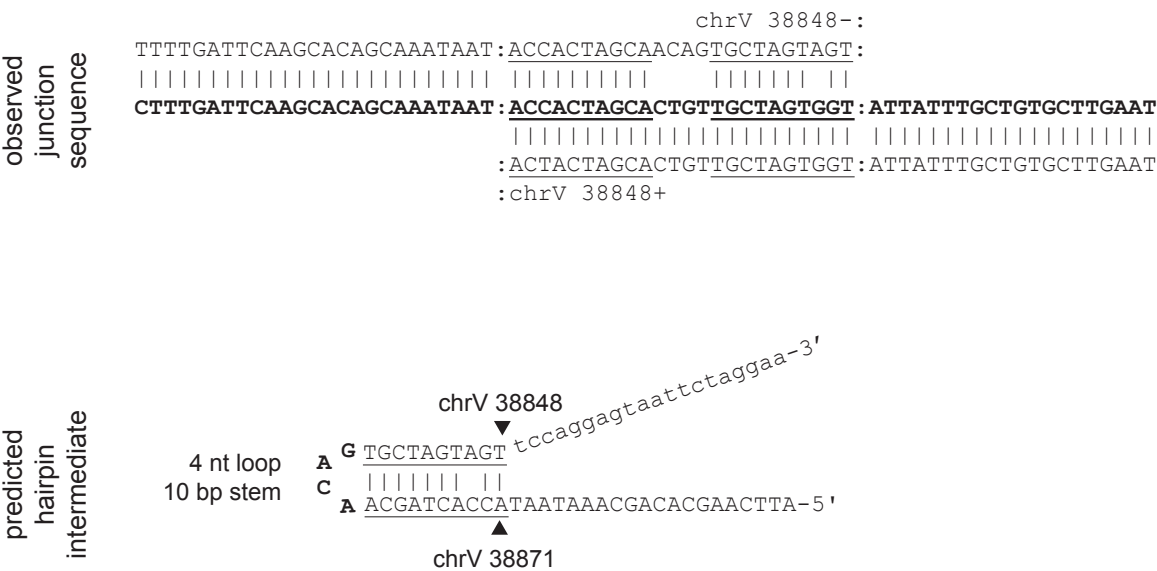
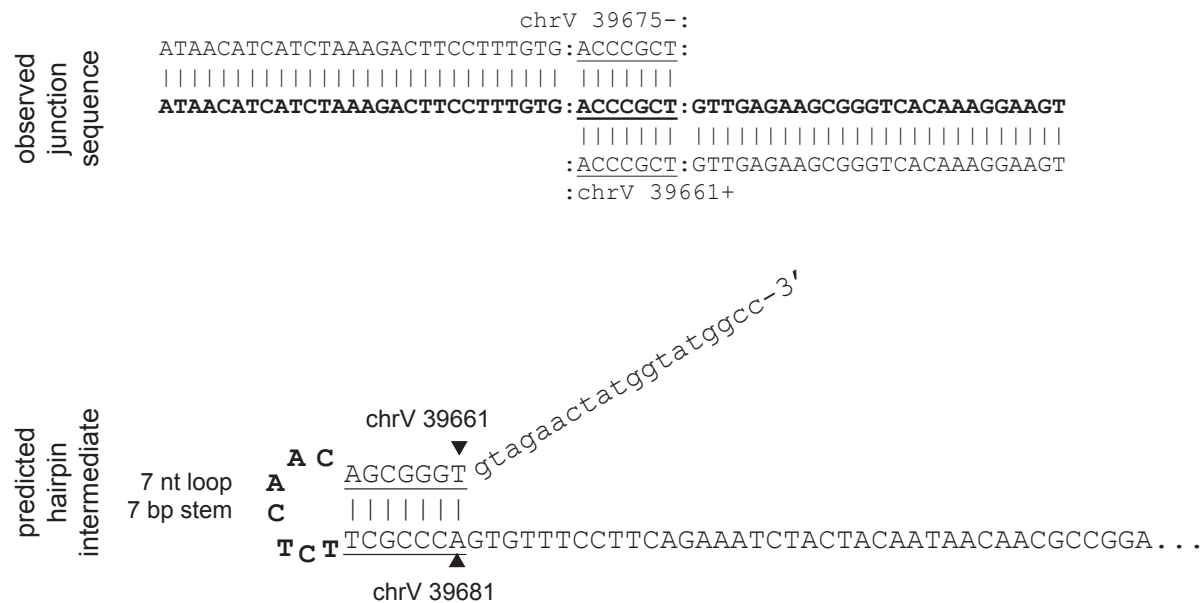


Figure 2 - figure supplement 1 (page 26 of 32)

AY. chrV L 39,661_39,681 hairpin



AZ. chrV L 40,281_40,326 hairpin

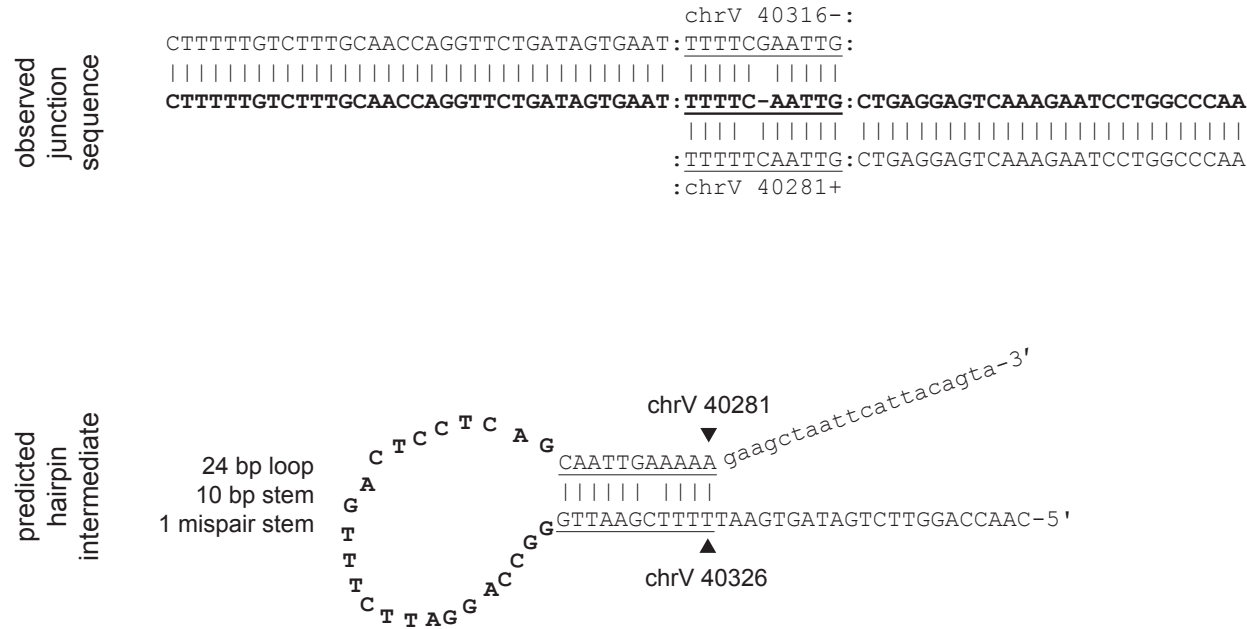
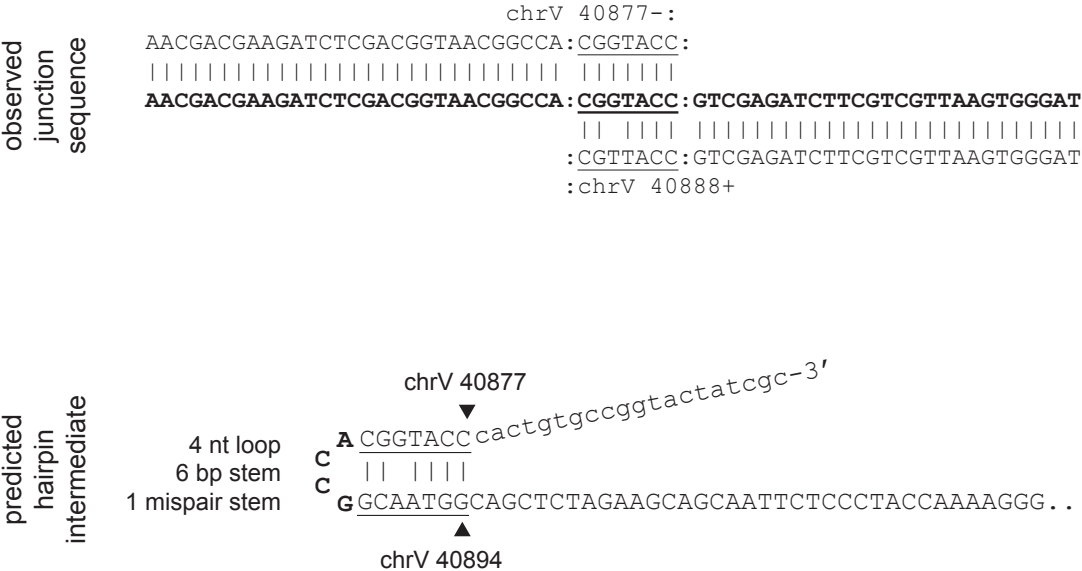


Figure 2 - figure supplement 1 (page 27 of 32)

BA. chrV L 40,877_40,894 hairpin



BB. chrV L 40,968_40,983 hairpin

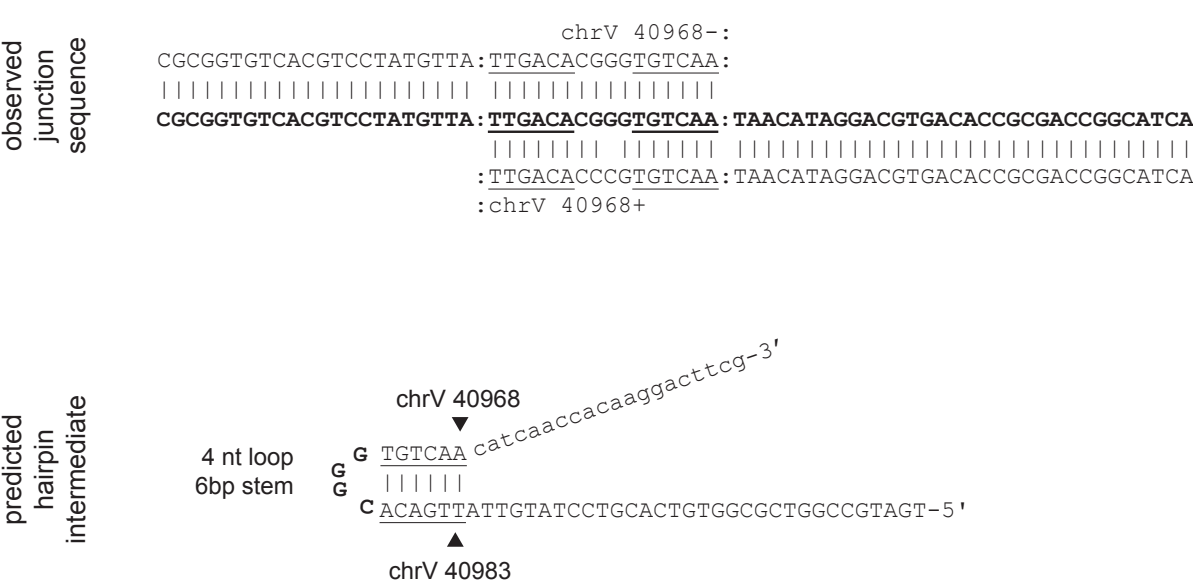
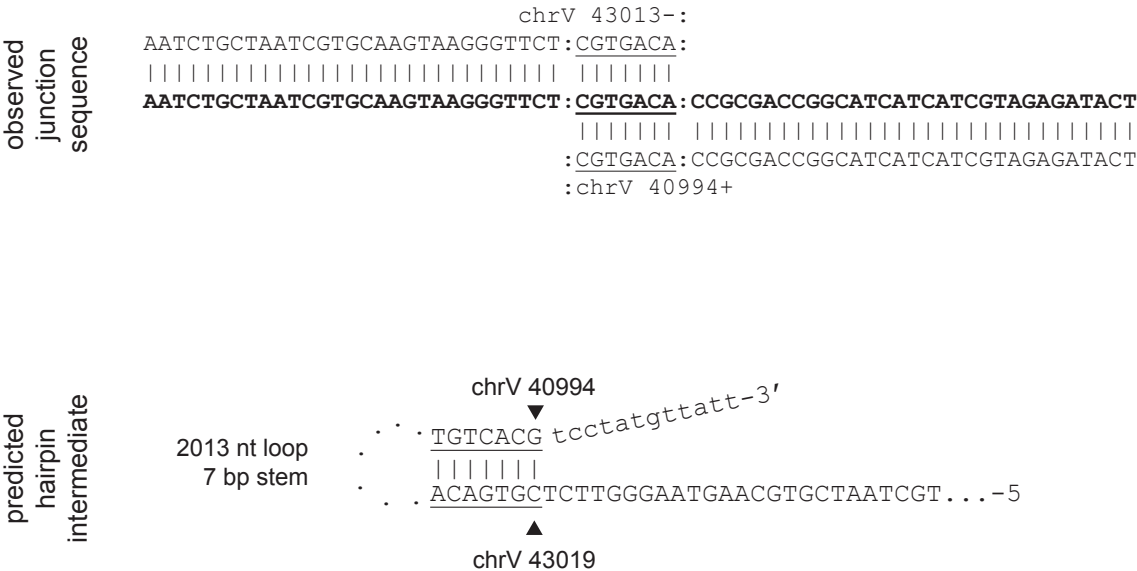


Figure 2 - figure supplement 1 (page 28 of 32)

BC. chrV L 40,994_43,019 hairpin



BD. chrV L 41,350_41,363 hairpin

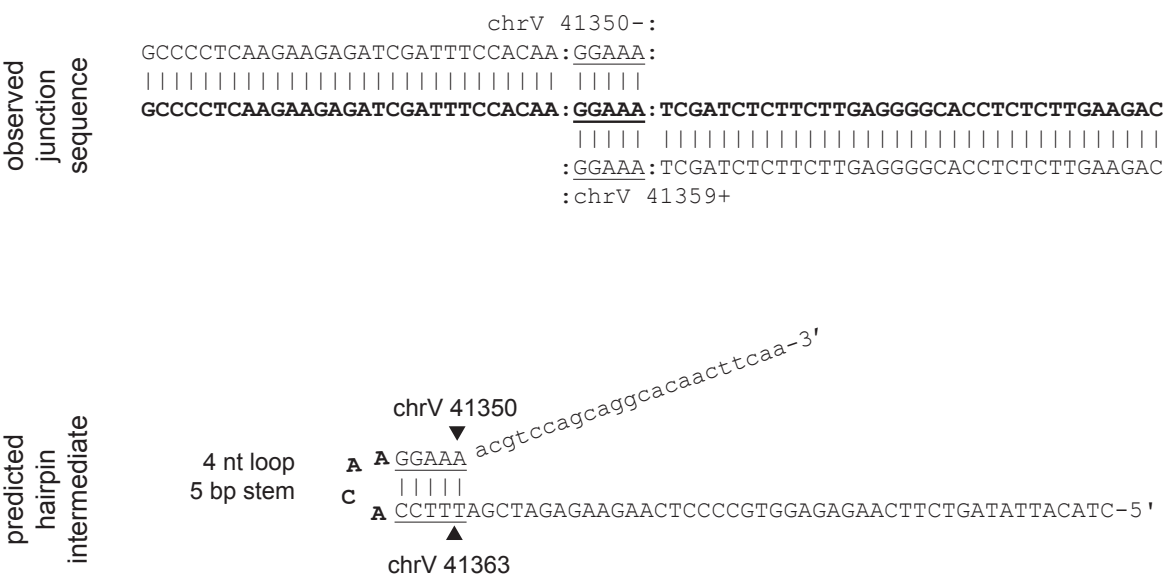
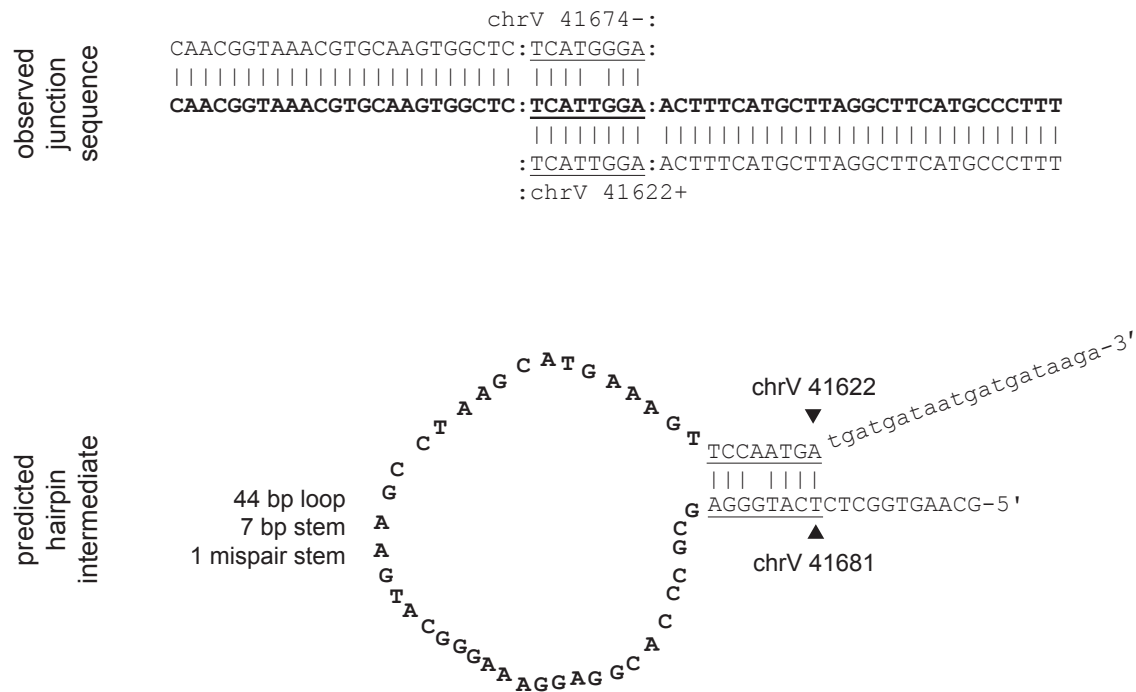


Figure 2 - figure supplement 1 (page 29 of 32)

BE. chrV L 41,622_41,681 hairpin



BF. chrV L 42,277_42,290 hairpin

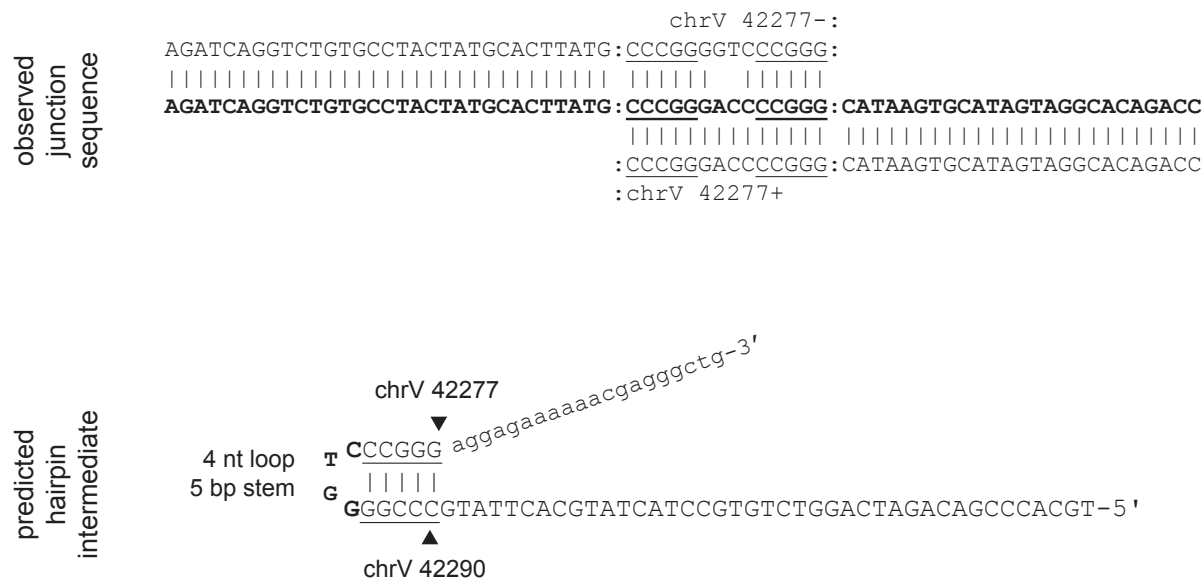


Figure 2 - figure supplement 1 (page 30 of 32)

BG. chrV L 42,855_42,869 hairpin



BH. chrV L 42,939_42,955 hairpin

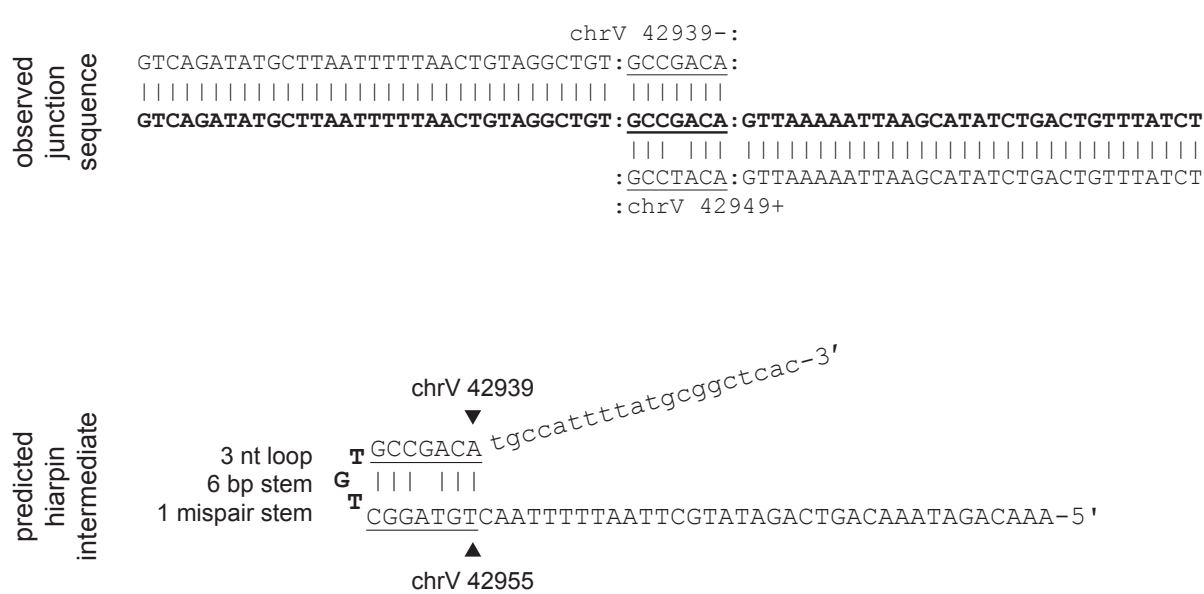
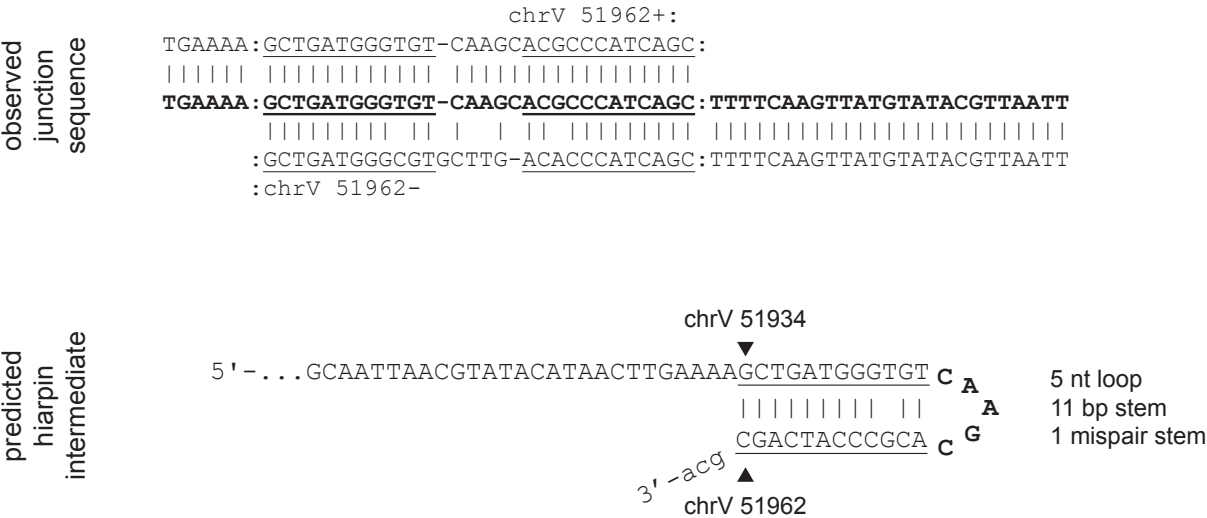


Figure 2 - figure supplement 1 (page 31 of 32)

BI. chrV L 51,934_51,962 hairpin



BJ. chrV L 72,380_72,456 hairpin

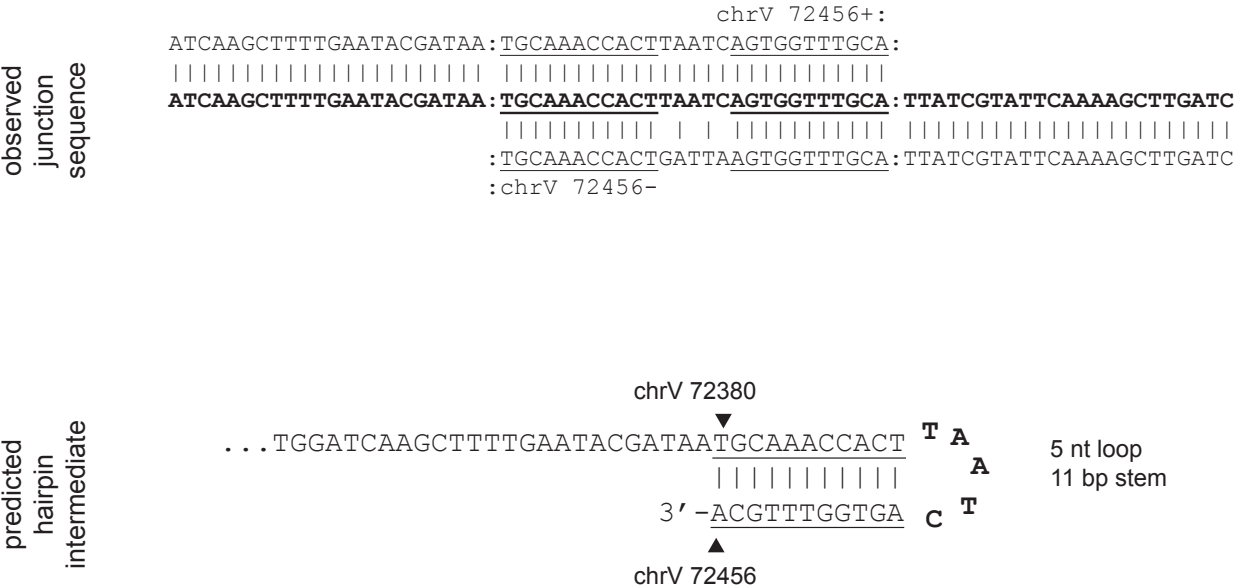


Figure 2 - figure supplement 1 (page 32 of 32)

BK. chrV L 84,266_84,283 hairpin

```

observed      chrV 84272+:
junction
sequence     TGTTCATGGTATTTCAGATGGTTAAAAACATGGGA: AGATGCT:
|||||
TGTTCATGGTATTTCAGATGGTTAAAAACATGGGA: AGATGCT: TCTGAGCATCTTCCCATGTTTTTTAACCATCTGAA
|||||
:AGATGCT: TCTGAGCATCTTCCCATGTTTTTTAACCATCTGAA
:chrV 84283-

```

predicted
hairpin
intermediate

5' -TGTCATGGTATTCAGATGGTTAAAAACATGGGAAGATGCT C A 4 nt loop
||||||| G 7 bp stem
TCTACGA A

chrV 84266

chrV 84283

3' -aacaaaacgcacggtgactc