

Figure 4-figure supplement 1

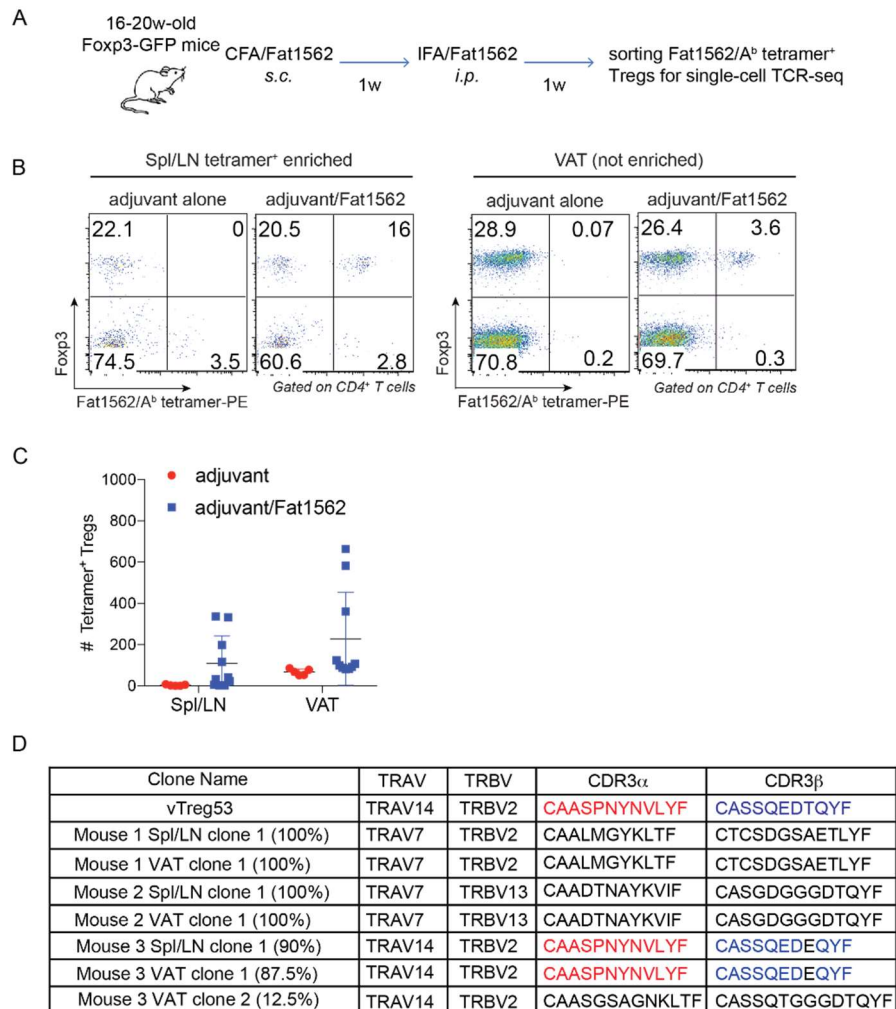


Figure 4–figure supplement 1, Single cell TCR sequencing (scTCR-seq) analyses of fat1562-reactive endogenous Treg cells following immunization. (A) Scheme of the experiment. **(B)** Flow cytometric analysis of fat1562/A^b-PE tetramer⁺ Treg cells in Spl/LNs (enriched by anti-PE beads) or VAT (not enriched) of mice immunized with adjuvant alone or adjuvant/fat1562. Plot is a representative of mice that did show detectable expansion of tetramer⁺ Tregs. **(C)** Numbers of fat1562/A^b-PE tetramer⁺ Treg cells in Spl/LNs or VAT of mice immunized with adjuvant alone or adjuvant/fat1562 **(D)** Summary of the frequency and CDR3 sequences of expanded fat1562/A^b-PE tetramer⁺ Treg clones.