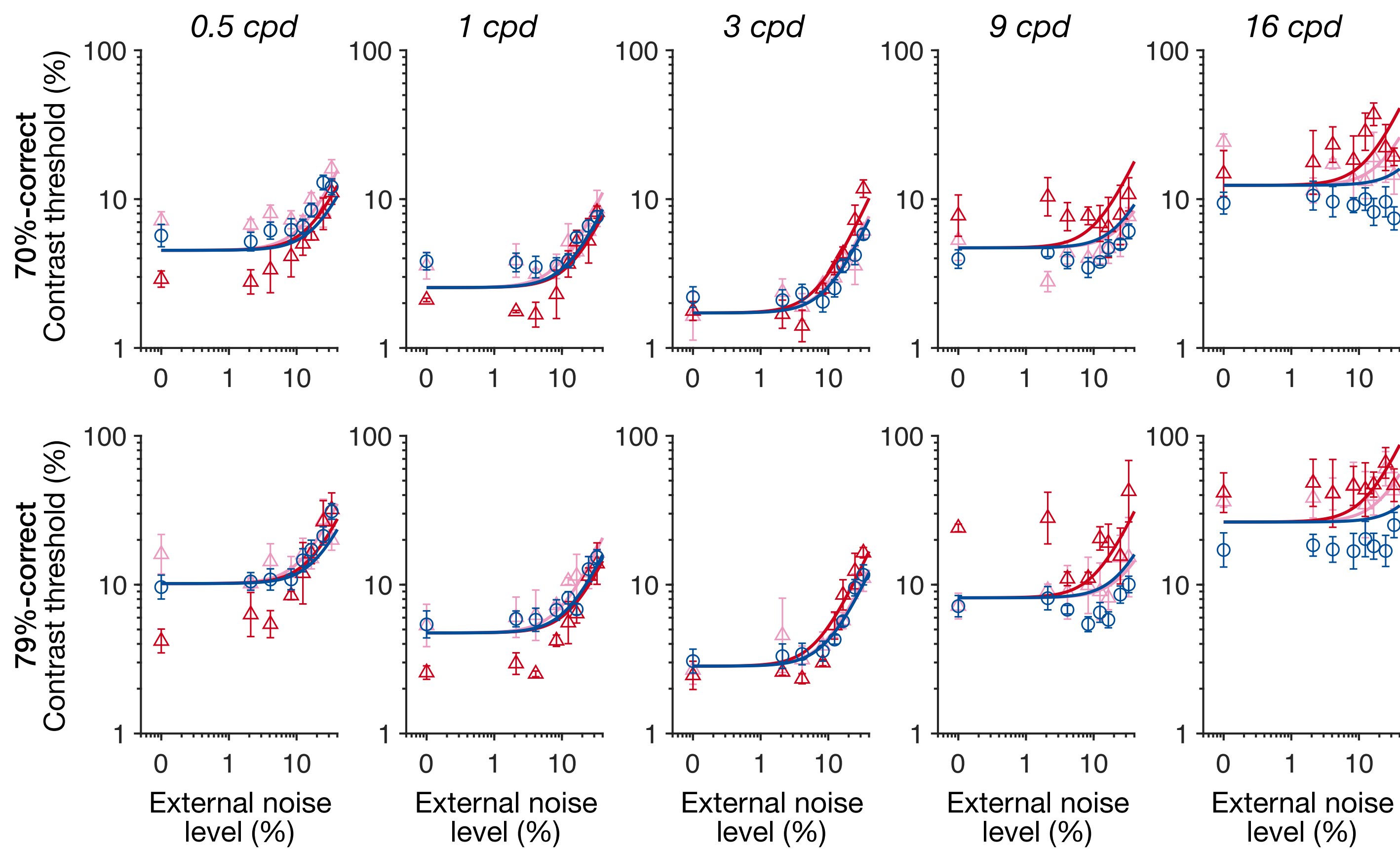


Figure 7- figure supplement 4

A

External noise filtering ($A_{ext} : r^2 = 86.03\%$)

—CTRL (n=8) —KC mild/moderate (n=3) —KC severe (n=3)



B

Null model ($r^2 = 83.31\%$)

—CTRL (n=8) —KC mild/moderate (n=3) —KC severe (n=3)

