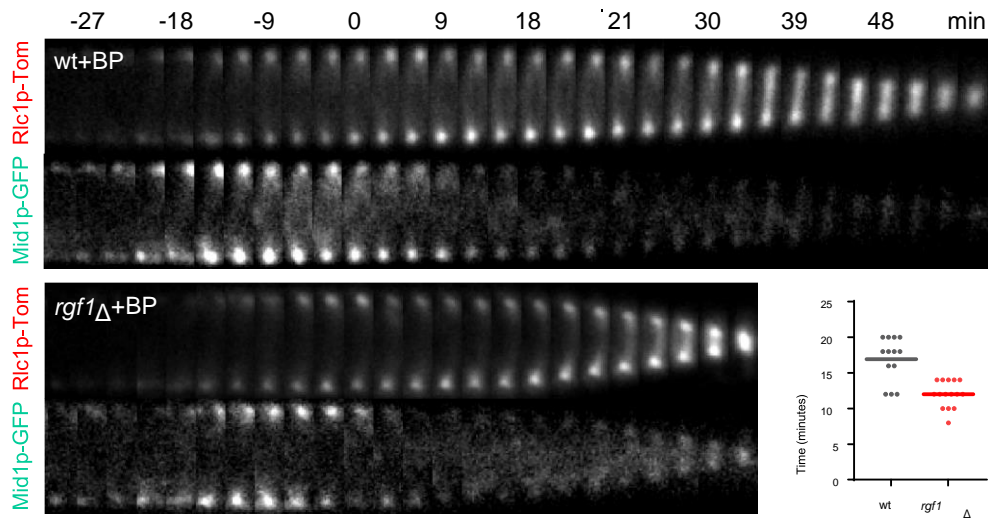


Figure 3-figure supplement 1



Mid1p-EGFP dissociated prematurely from the ring in *rgf1Δ* cells (Figure 3-figure supplement 1).

Kymographs of Rlc1p-tdTom and Mid1p-GFP in wild type and *rgf1Δ* cells treated with BP (5 μ g/ml) and time-lapse-imaged every 3 min. (t=0 indicates BP septum signal appearance, not shown). Quantitation of the timing of Mid1p-GFP disappearance from the ring (from BP septum signal) in wild type (n=13) and *rgf1Δ* (n=15) individual cells.