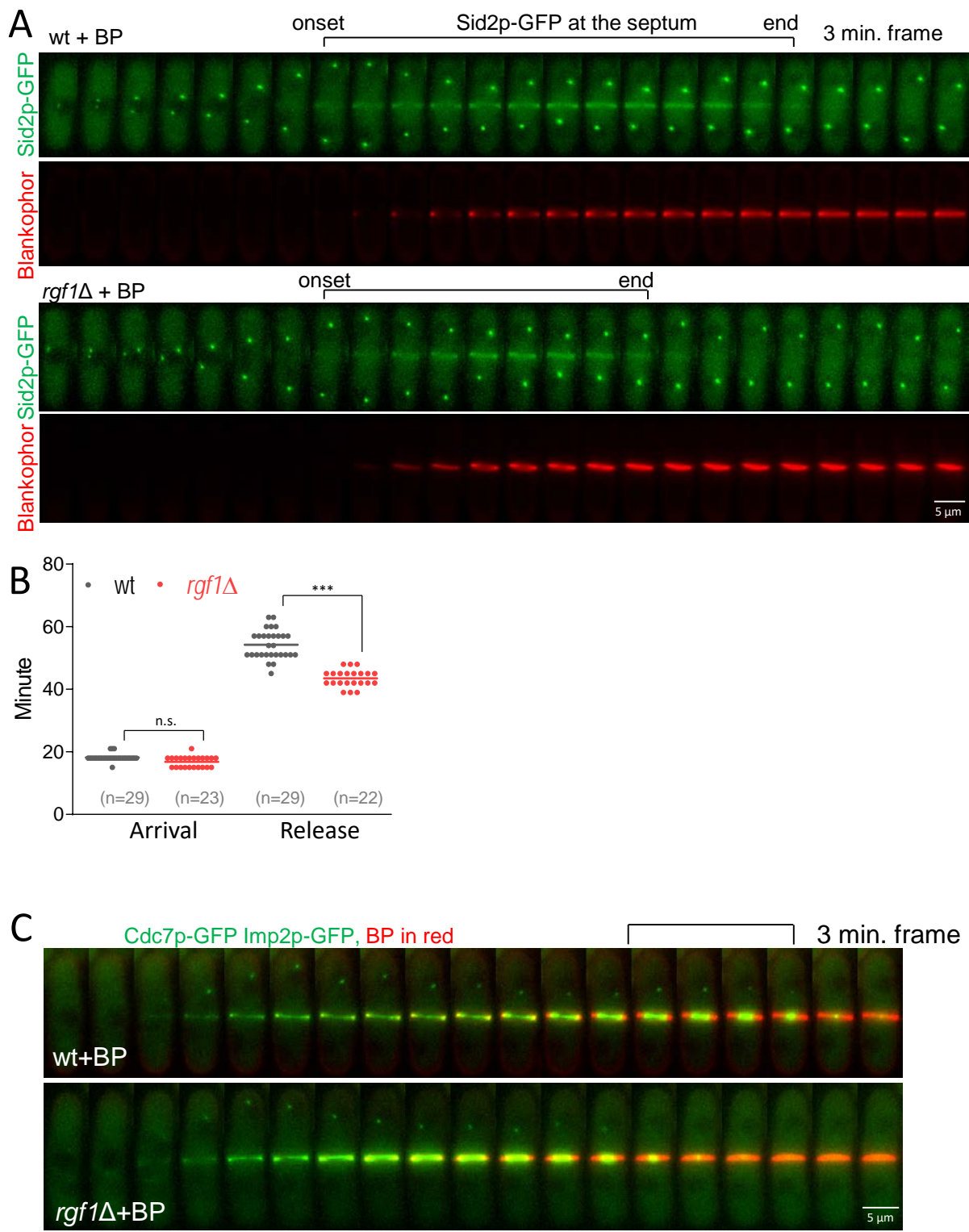


Figure 7-figure supplement 1



Cell wall stress delays Sid2p silencing in wild-type cells but not in *rgf1Δ* cells (Figure 7-figure supplement 1).

A) Time-lapse series of a representative Sid2p-GFP cell (n= 29) or Sid2p-GFP *rgf1Δ* cells (n = 23) treated with BP. (B) Quantitation of the arrival and release of Sid2p at the septum; time 0 is considered as the SPB separation of the cells in A. Statistical significance was calculated by ANOVA followed by Šídák's multiple comparisons test (n.s. $p > 0.05$; *** $p < 0.0001$). (C) Still images captured every 3 min taken from a movie of a representative Cdc7p-GFP Imp2p-GFP cell, or Cdc7p-GFP Imp2p-GFP *rgf1Δ* cell treated with BP (5μg/ml).