

Assay 1 - Single drug dose-response

Conditions tested:

- 1-EGF (positive control with chemoattractant, but no drug)
- 2-no-EGF (negative control for baseline invasion, no chemoattractant, no drug)
- 3-p38i (1 μ M, 10 μ M, 25 μ M)
- 4-JNKi (1 μ M, 10 μ M, 25 μ M)
- 5-MEKi (1nM, 10nM, 100nM, 1 μ M)
- 6-MLKi (10nM, 200nM, 1 μ M, 10 μ M)
- 7-TAOK2i (0.1 μ M, 1 μ M, 10 μ M, 25 μ M)
- 8-CK2i (0.1 μ M, 1 μ M, 10 μ M, 25 μ M)

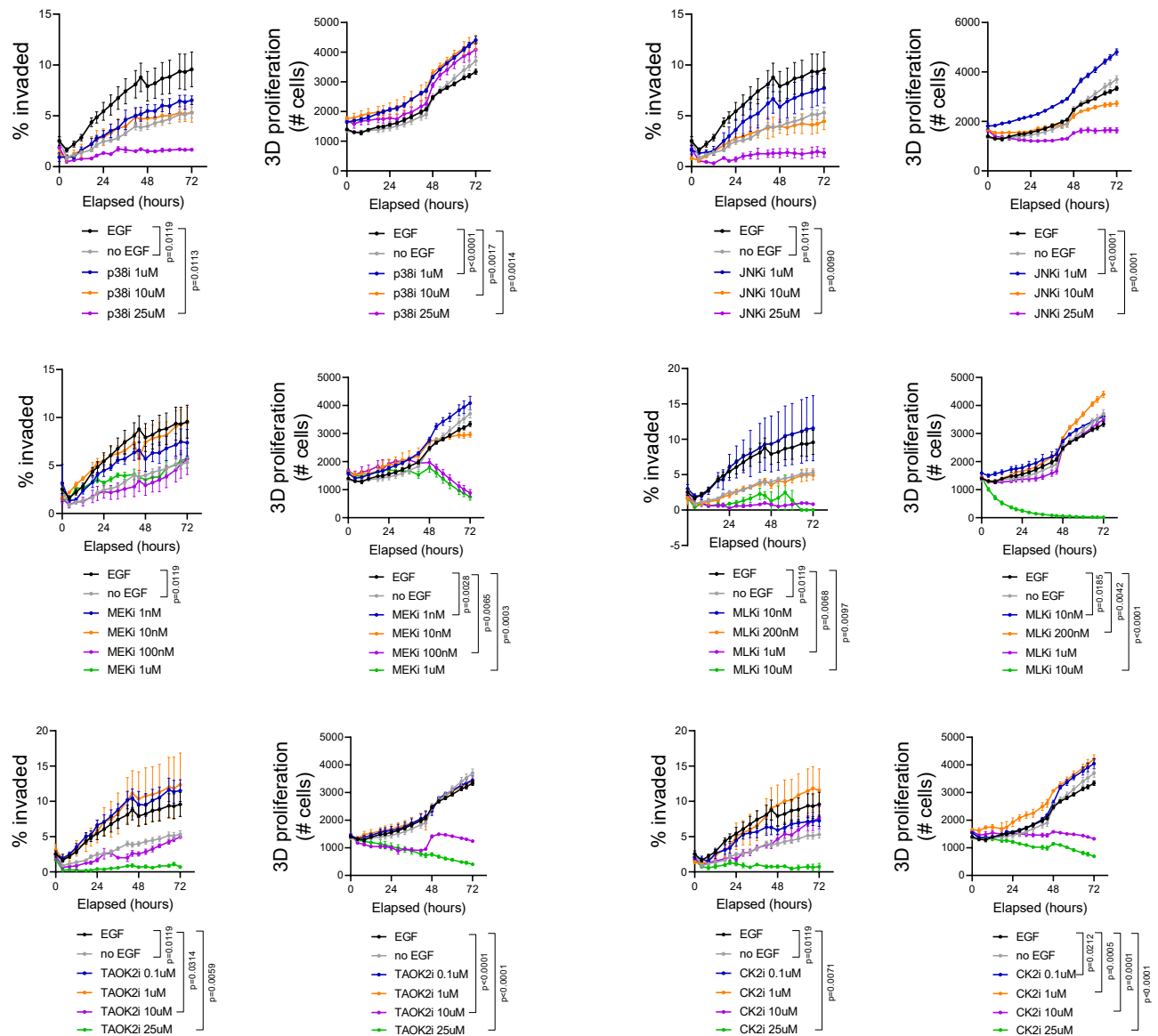


Figure 3 - figure supplement 1 (cont'd)

Assay 2 - Dual drug combinations (1)

Conditions tested:

- 1-EGF (positive control with chemoattractant, but no drug)
- 2-no-EGF (negative control for baseline invasion, no chemoattractant, no drug)
- 3-JNKi (1 μ M)
- 4-p38i (1 μ M)
- 5-MEKi (10nM)
- 6-MLKi (10nM)
- 7-CK2i (0.1 μ M)
- 8-TAOK2i (1 μ M)
- 9-JNKi + CK2i
- 10-JNKi + MEKi
- 11-JNKi + MLKi
- 12-JNKi + p38i
- 13-JNKi + TAOK2i
- 14-MEKi + CK2i
- 15-p38i + CK2i
- 16-p38i + MEKi

- 17-p38i + MLKi
- 18-p38i + TAOK2i
- 19-TAOK2i + MEKi
- 20-TAOK2i + MLKi

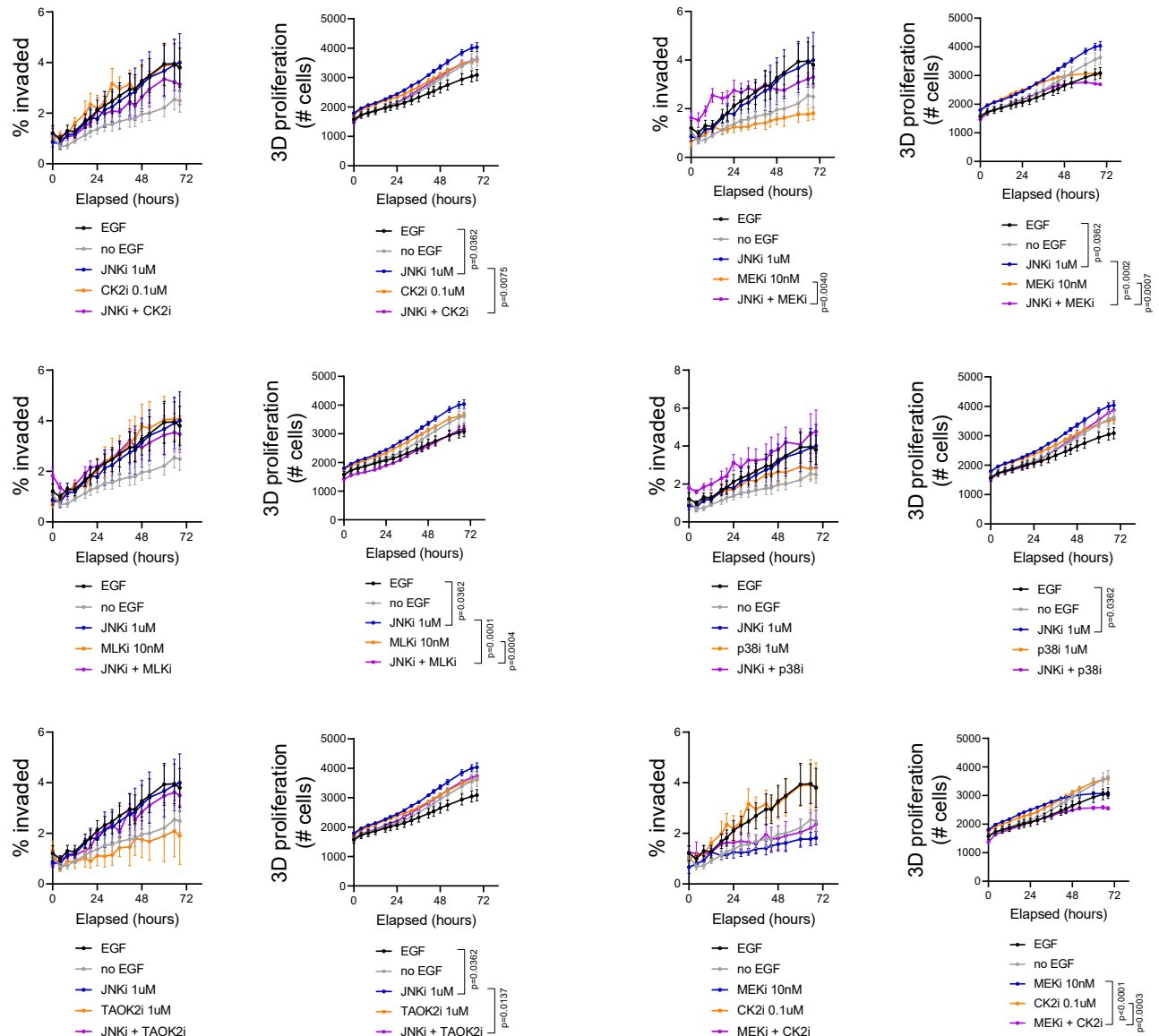
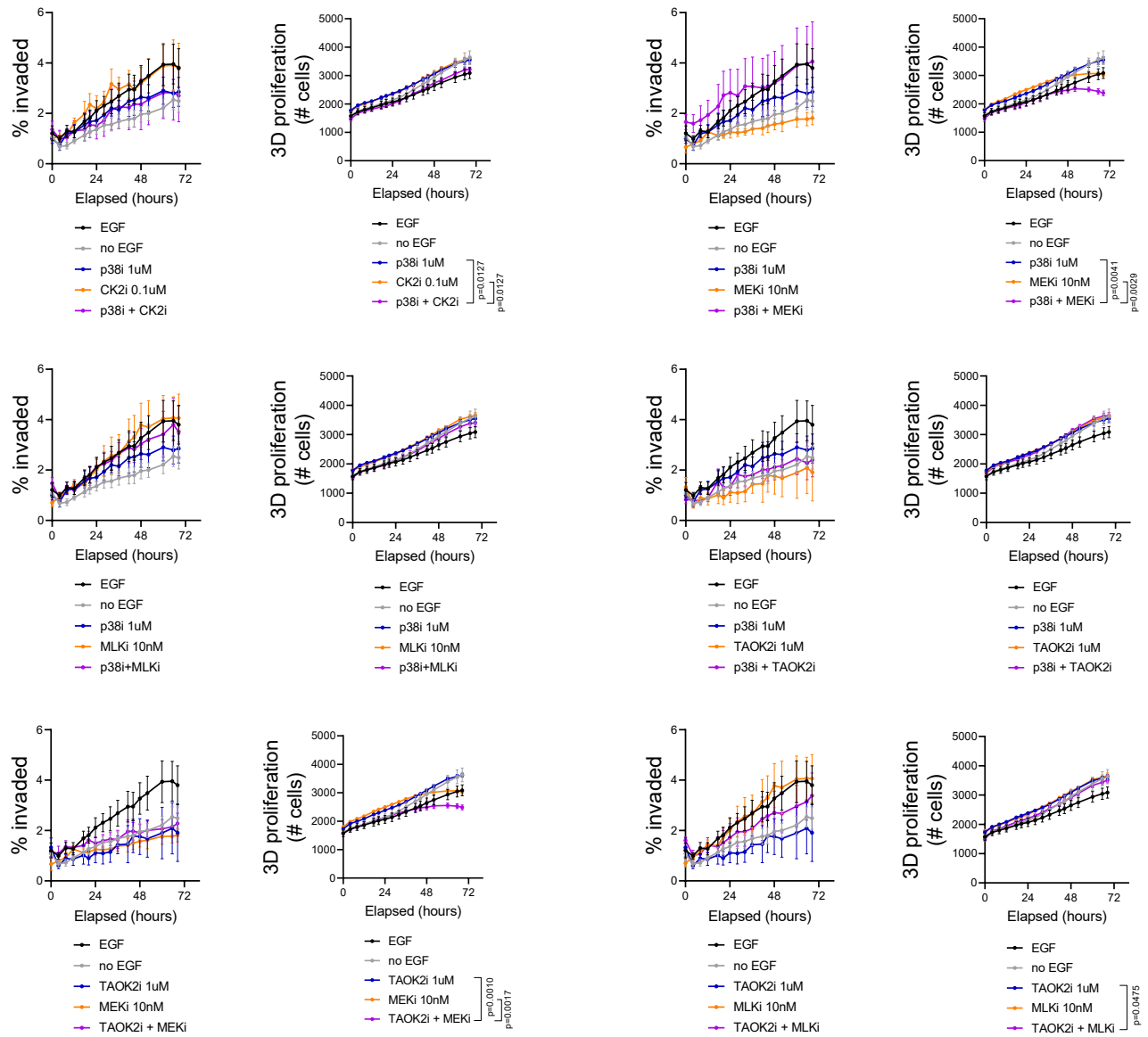


Figure 3 - figure supplement 1 (cont'd)



Assay 3 - Dual drug combinations (2)

Conditions tested:

- 1-EGF (positive control with chemoattractant, but no drug)
- 2-no-EGF (negative control for baseline invasion, no chemoattractant, no drug)
- 3-p38i (0.1μM)
- 4-MEKi (1nM)
- 5-MLKi (50nM)
- 6-TAOK2i (0.1μM)
- 7-CK2i (10nM)
- 8-p38i + CK2i
- 9-p38i + MEKi
- 10-p38i + MLKi
- 11-p38i + TAOK2i
- 12-TAOK2i + CK2i
- 13-TAOK2i + MEKi
- 14-TAOK2i + MLKi
- 15-MEKi + CK2i
- 16-MEKi + MLKi

17- MLKi + CK2i

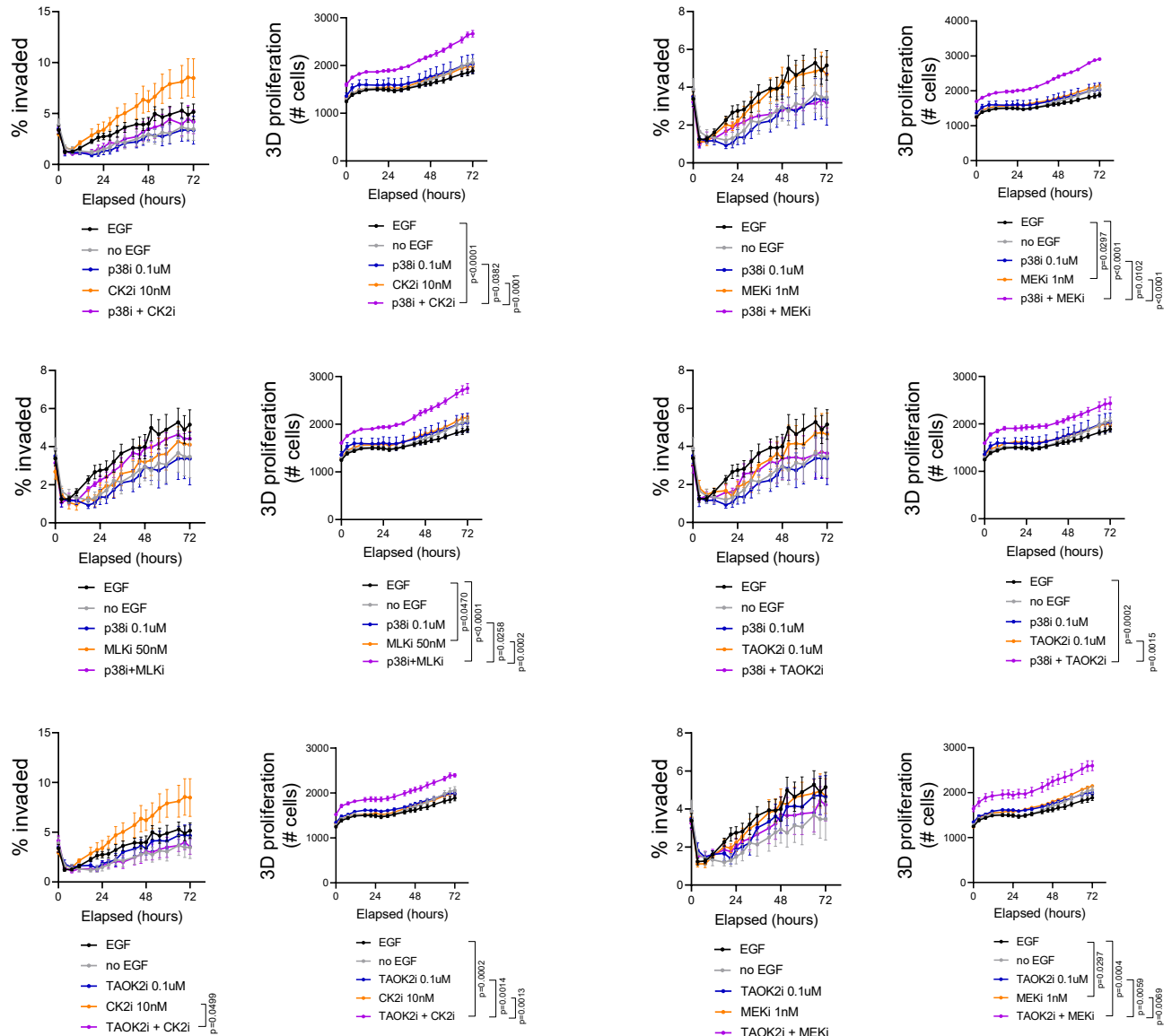


Figure 3 - figure supplement 1 (cont'd)

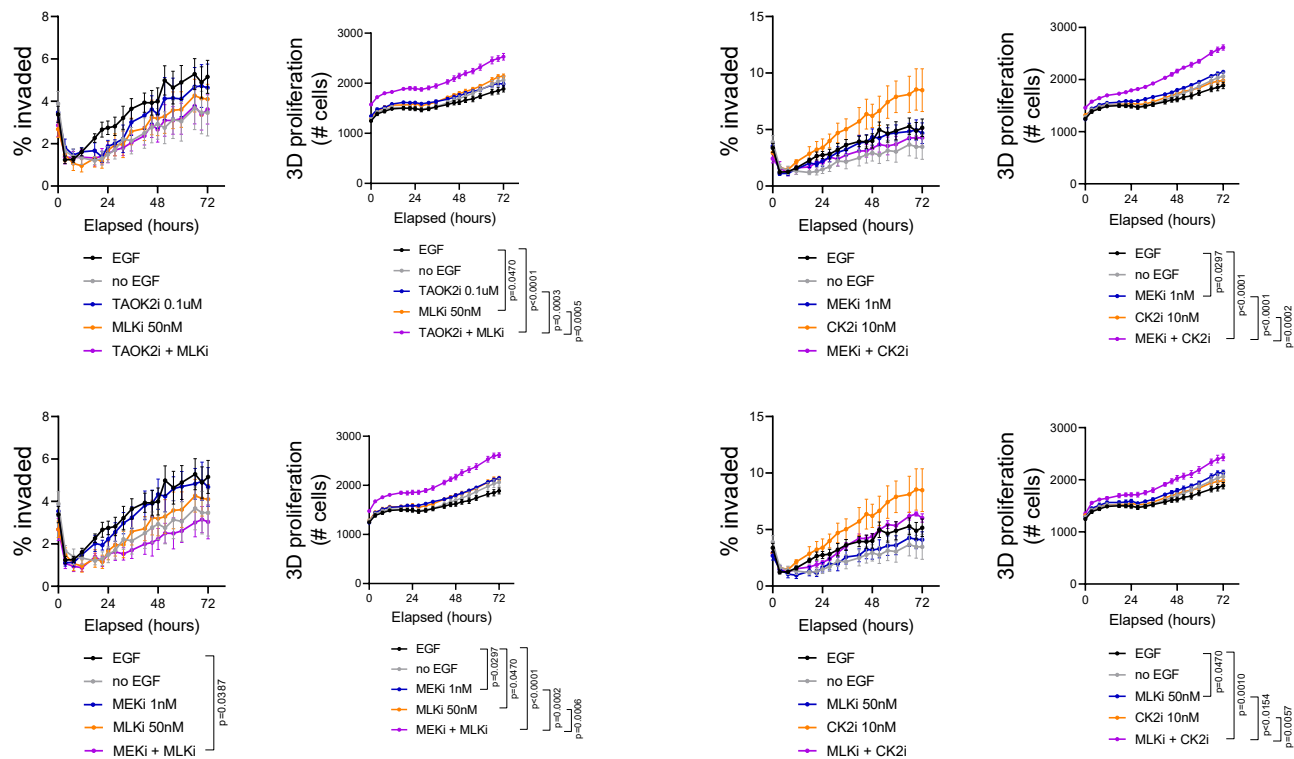


Figure 3 - figure supplement 1 (cont'd)

Assay 4 - Dual drug combinations (2) - Repeat

Conditions tested:

- 1-EGF (positive control with chemoattractant, but no drug)
- 2-no-EGF (negative control for baseline invasion, no chemoattractant, no drug)
- 3-p38i (0.1 μ M)
- 4-MEKi (1nM)
- 5-MLKi (50nM)
- 6-TAOK2i (0.1 μ M)
- 7-CK2i (10nM)
- 8-p38i + CK2i
- 9-p38i + MEKi
- 10-p38i + MLKi
- 11-p38i + TAOK2i
- 12-TAOK2i + CK2i
- 13-TAOK2i + MEKi
- 14-TAOK2i + MLKi

15-MEKi + CK2i

16-MEKi + MLKi

17- MLKi + CK2i

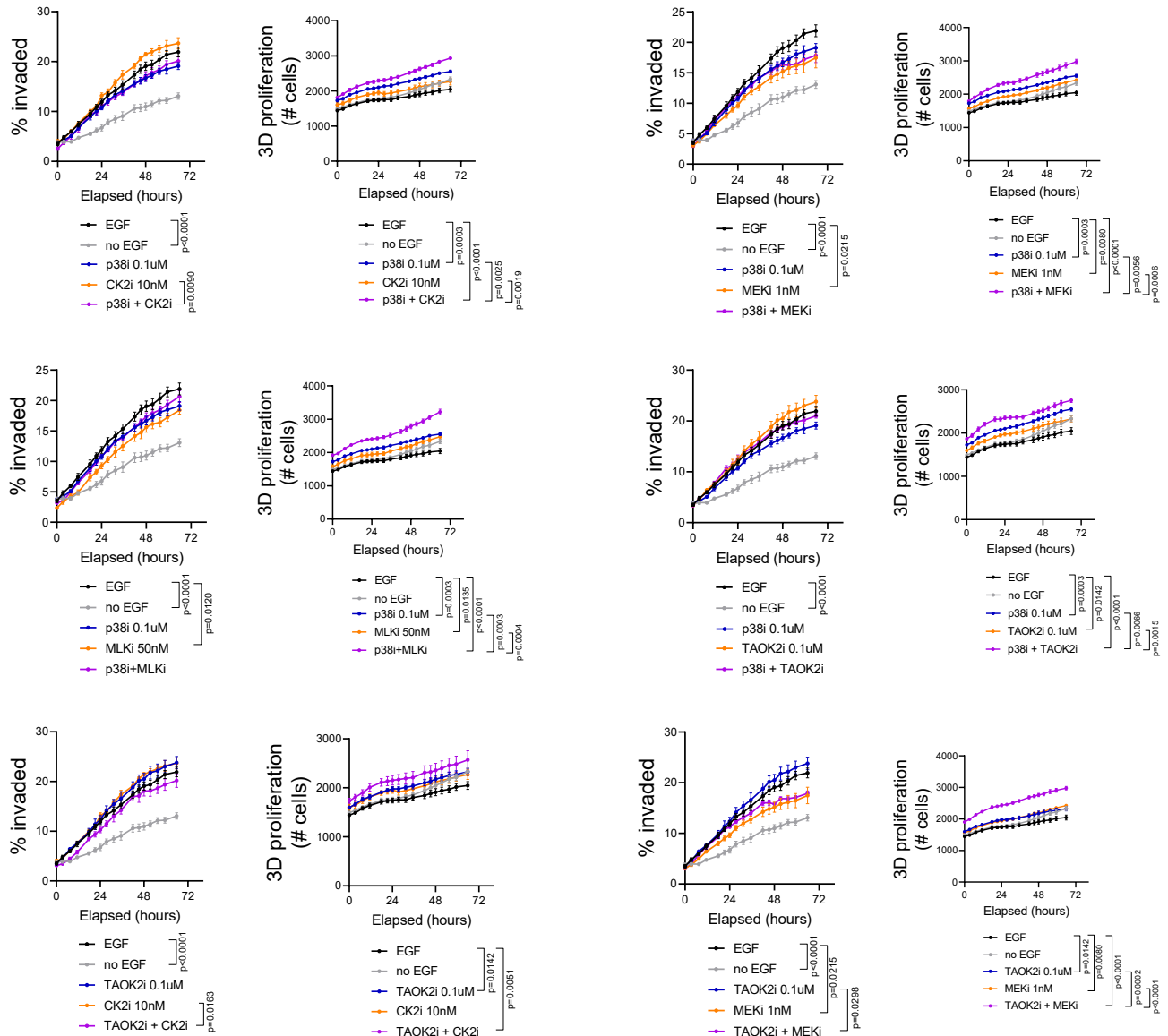


Figure 3 - figure supplement 1 (cont'd)

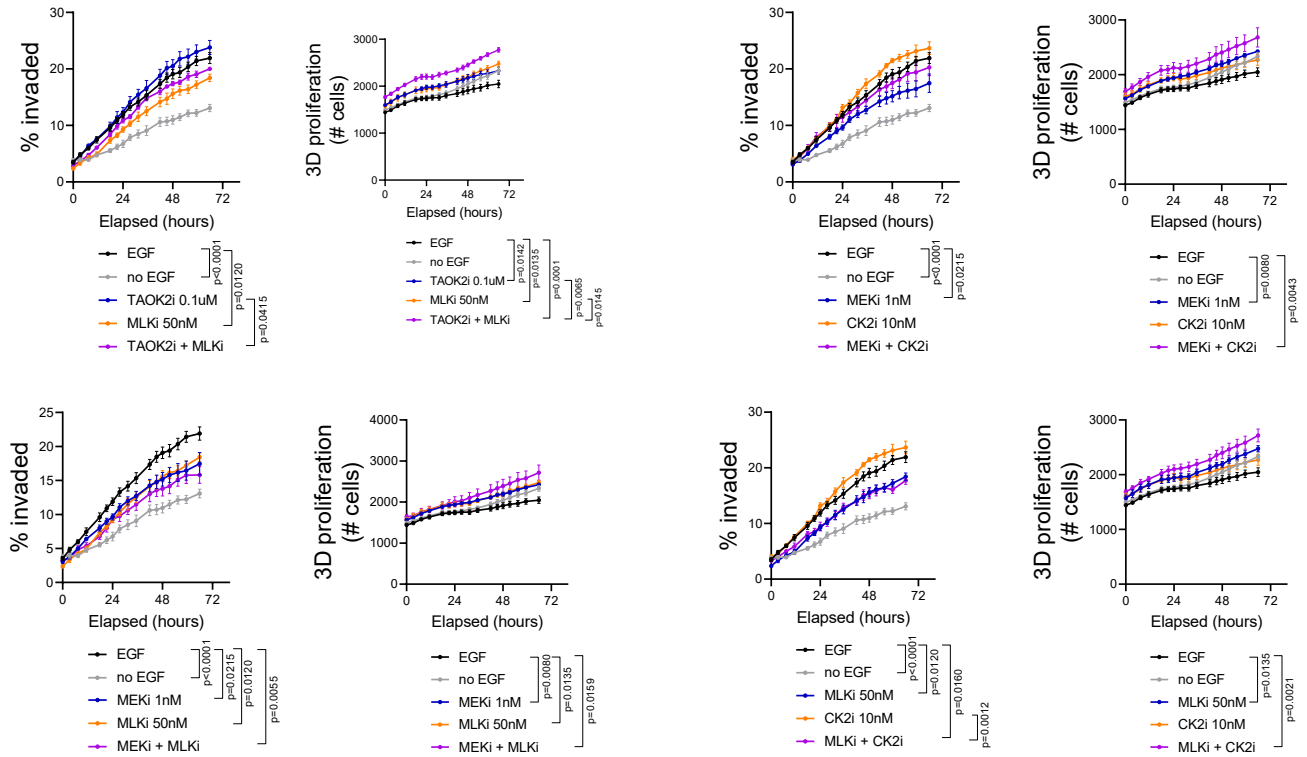


Figure 3 - figure supplement 1 (cont'd)

Assay 5 - Multi-drug combinations (1)

Conditions tested:

- 1-EGF (positive control with chemoattractant, but no drug)
- 2-no-EGF (negative control for baseline invasion, no chemoattractant, no drug)
- 3-MEKi (1nM)
- 4-MLKi (50nM)
- 5-TAOK2i (0.1μM)
- 6-CK2i (10nM)
- 7-MEKi + MLKi
- 8-TAOK2i + CK2i
- 9-MEKi + MLKi + TAOK2i
- 10-MEKi + MLKi + CK2i
- 11-TAOK2i + CK2i + MEKi
- 12-TAOK2i + CK2i + MLKi
- 13-MEKi + MLKi + TAOK2i + CK2i

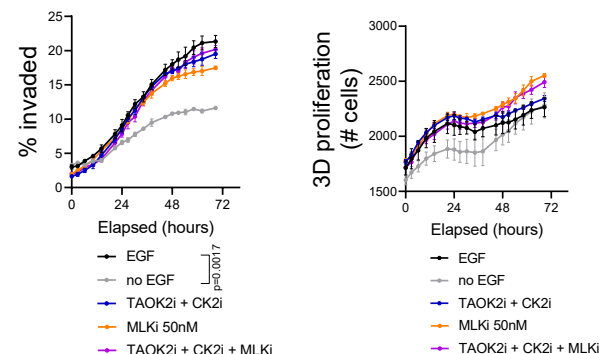
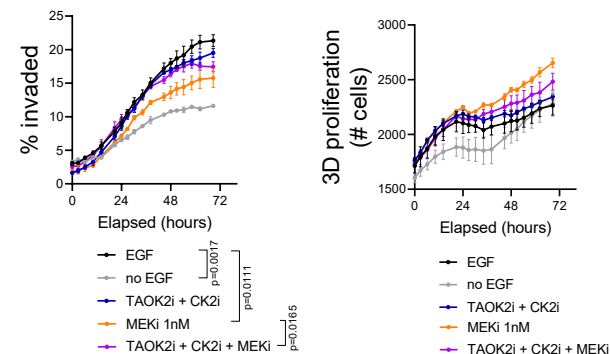
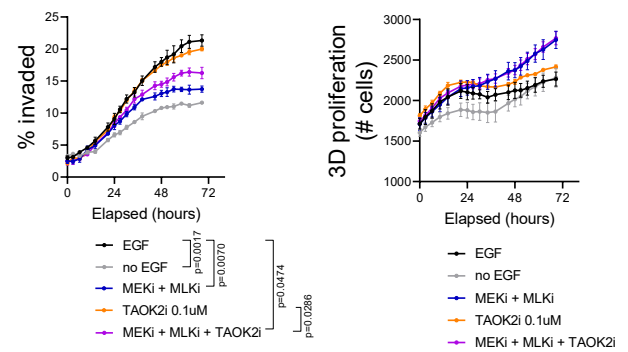
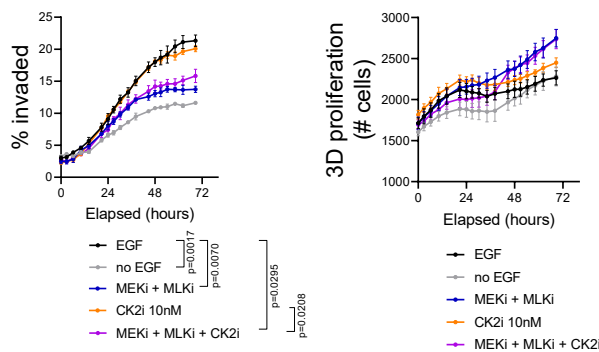
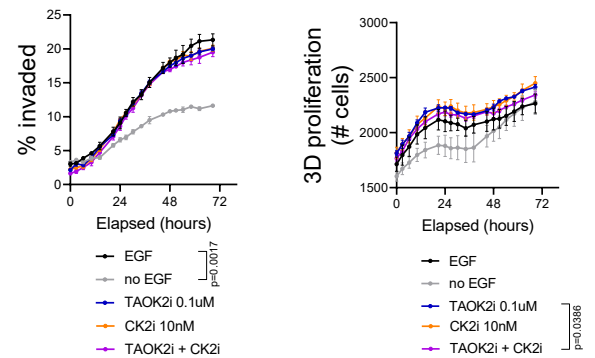
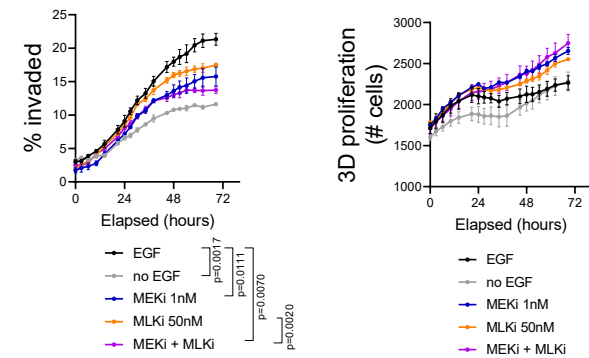
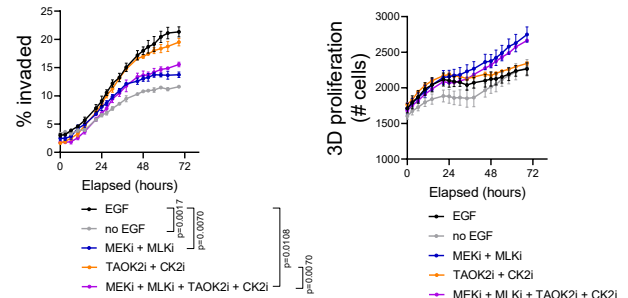
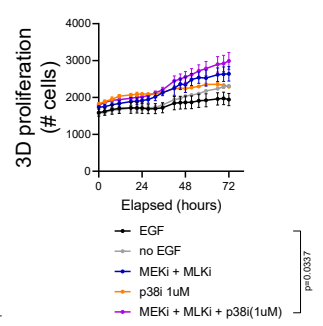
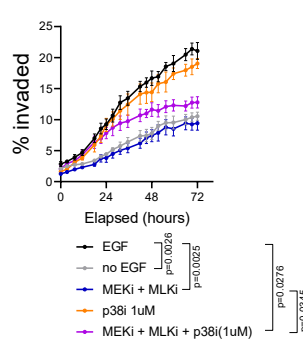
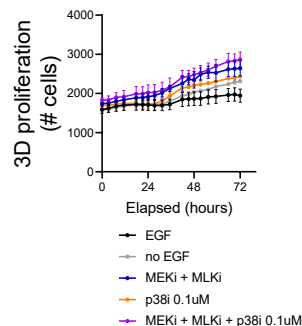
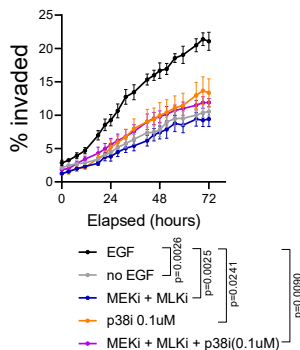
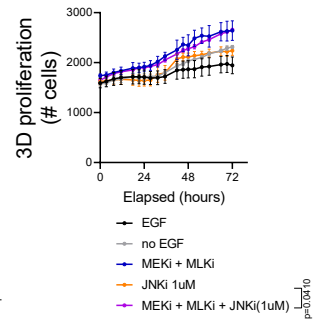
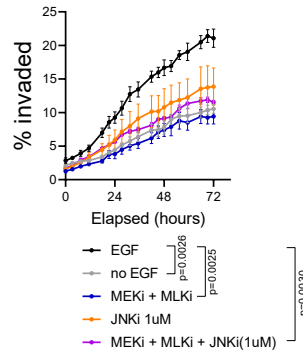
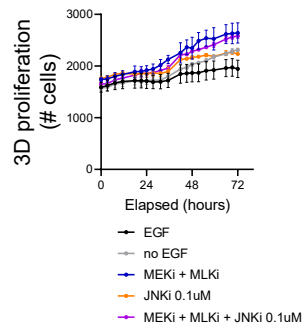
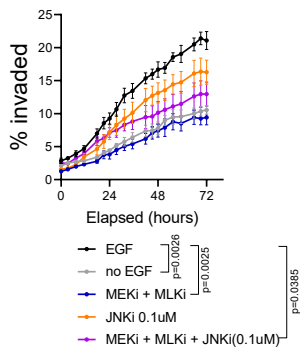
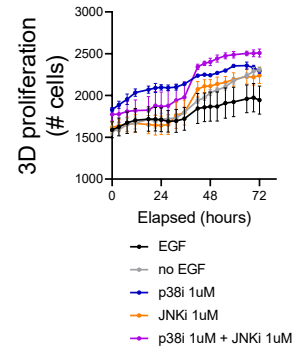
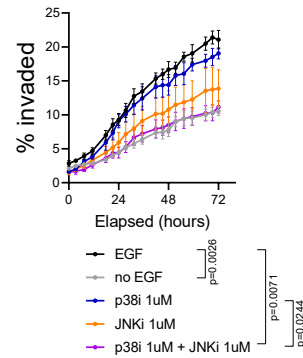
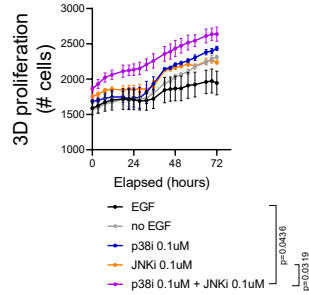
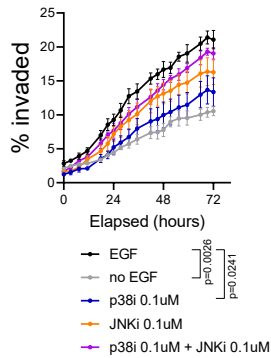
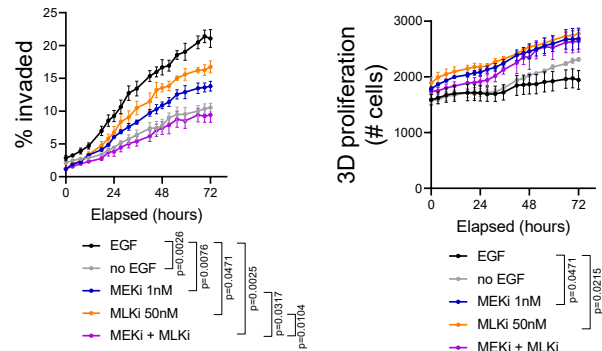


Figure 3 - figure supplement 1 (cont'd)

Assay 6 - Multi-drug combinations (2)

Conditions tested:

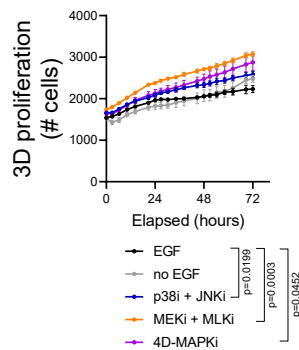
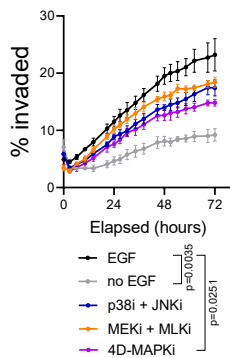
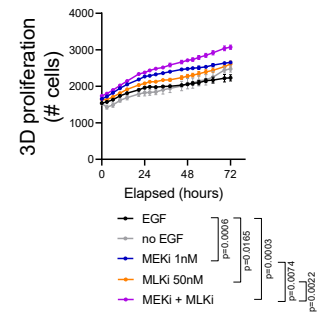
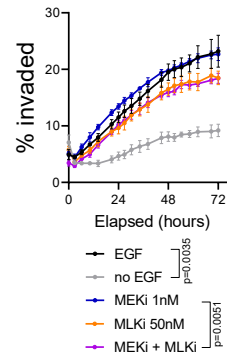
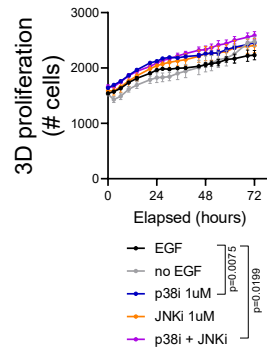
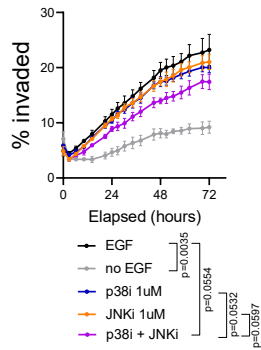
- 1-EGF (positive control with chemoattractant, but no drug)
- 2-no-EGF (negative control for baseline invasion, no chemo-attractant, no drug)
- 3-p38i (0.1μM)
- 4-p38i (1μM)
- 5-JNKi (0.1μM)
- 6-JNKi (1μM)
- 7-MEKi (1nM)
- 8-MLKi (50nM)
- 9-p38i (0.1μM) + JNKi (0.1μM)
- 10-p38i (1μM) + JNKi (1μM)
- 11-MEKi + MLKi
- 12-MEKi + MLKi + p38i (0.1μM)
- 13-MEKi + MLKi + p38i (1μM)
- 14-MEKi + MLKi + JNKi (0.1μM)
- 15-MEKi + MLKi + JNKi (1μM)



Assay 7 - Multi-drug combinations (3)

Conditions tested:

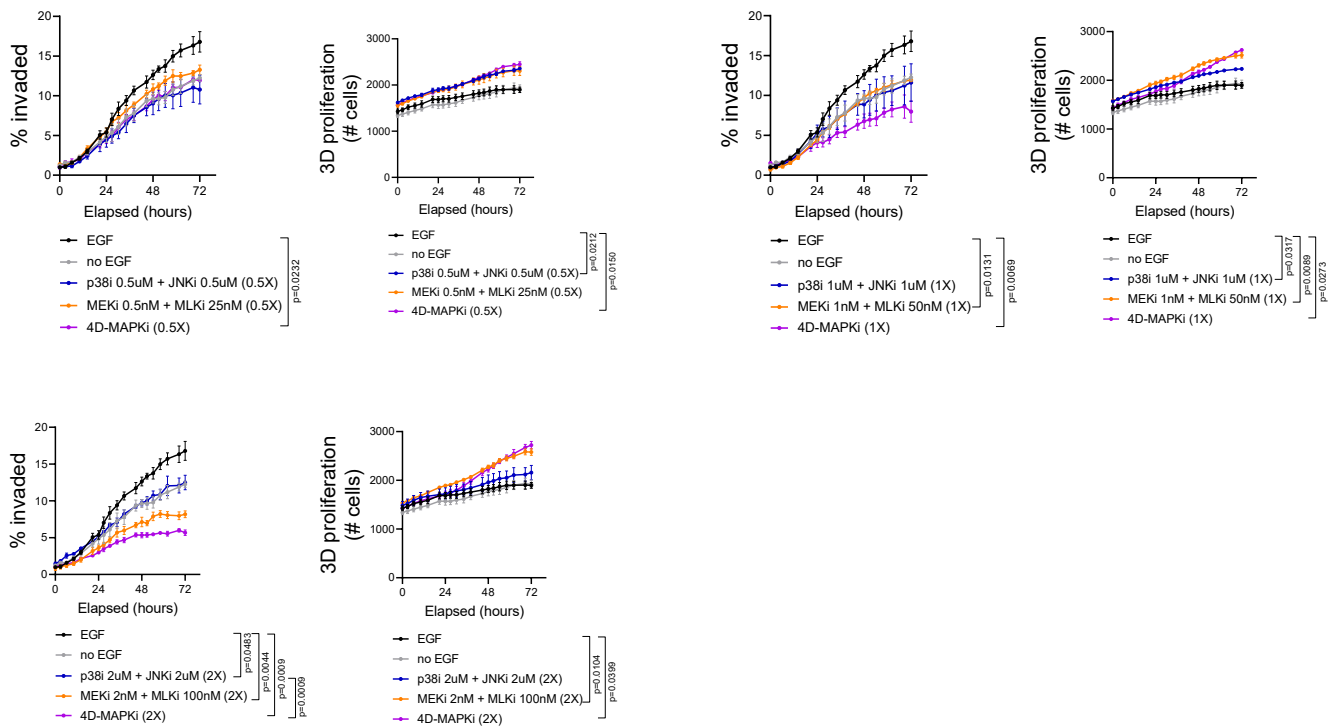
- 1-EGF (positive control with chemoattractant, but no drug)
- 2-no-EGF (negative control for baseline invasion, no chemo-attractant, no drug)
- 3-p38i (1 μ M)
- 4-JNKi (1 μ M)
- 5-MEKi (1nM)
- 6-MLKi (50nM)
- 7-p38i + JNKi
- 8-MEKi + MLKi
- 9-p38i + JNKi + MEKi + MLKi (4DMAPKi)



Assay 8 - Multi-drug combinations (4)

Conditions tested:

- 1-EGF (positive control with chemoattractant, but no drug)
- 2-no-EGF (negative control for baseline invasion, no chemo-attractant, no drug)
- 3-p38i (0.1 μ M) + JNKi (0.1 μ M) (0.5X)
- 4-p38i (1 μ M) + JNKi (1 μ M) (1X)
- 5-p38i (2 μ M) + JNKi (2 μ M) (2X)
- 6-MEKi (0.5nM) + MLKi (25nM) (0.5X)
- 7-MEKi (1nM) + MLKi (50nM) (1X)
- 8-MEKi (2nM) + MLKi (100nM) (2X)
- 9-4DMAPKi (0.5X)
- 10-4DMAPKi (1X)
- 11-4DMAPKi (2X)



Assay 9 - Multi-drug combinations (5)

Conditions tested:

- 1-EGF (positive control with chemoattractant, but no drug)
- 2-no-EGF (negative control for baseline invasion, no chemo-attractant, no drug)
- 3-p38i (1 μ M) + JNKi (1 μ M)
- 4-MEKi (1nM) + MLKi (50nM)
- 5-MEKi + MLKi + JNKi (1 μ M)
- 6-MEKi + MLKi + JNKi (2 μ M)
- 7-MEKi + MLKi + p38i (1 μ M)
- 8-MEKi + MLKi + p38i (2 μ M)
- 9-p38i + JNKi + MEKi (1nM)
- 10-p38i + JNKi + MEKi (2nM)
- 11-p38i + JNKi + MLKi (50nM)
- 12-p38i + JNKi + MLKi (100nM)

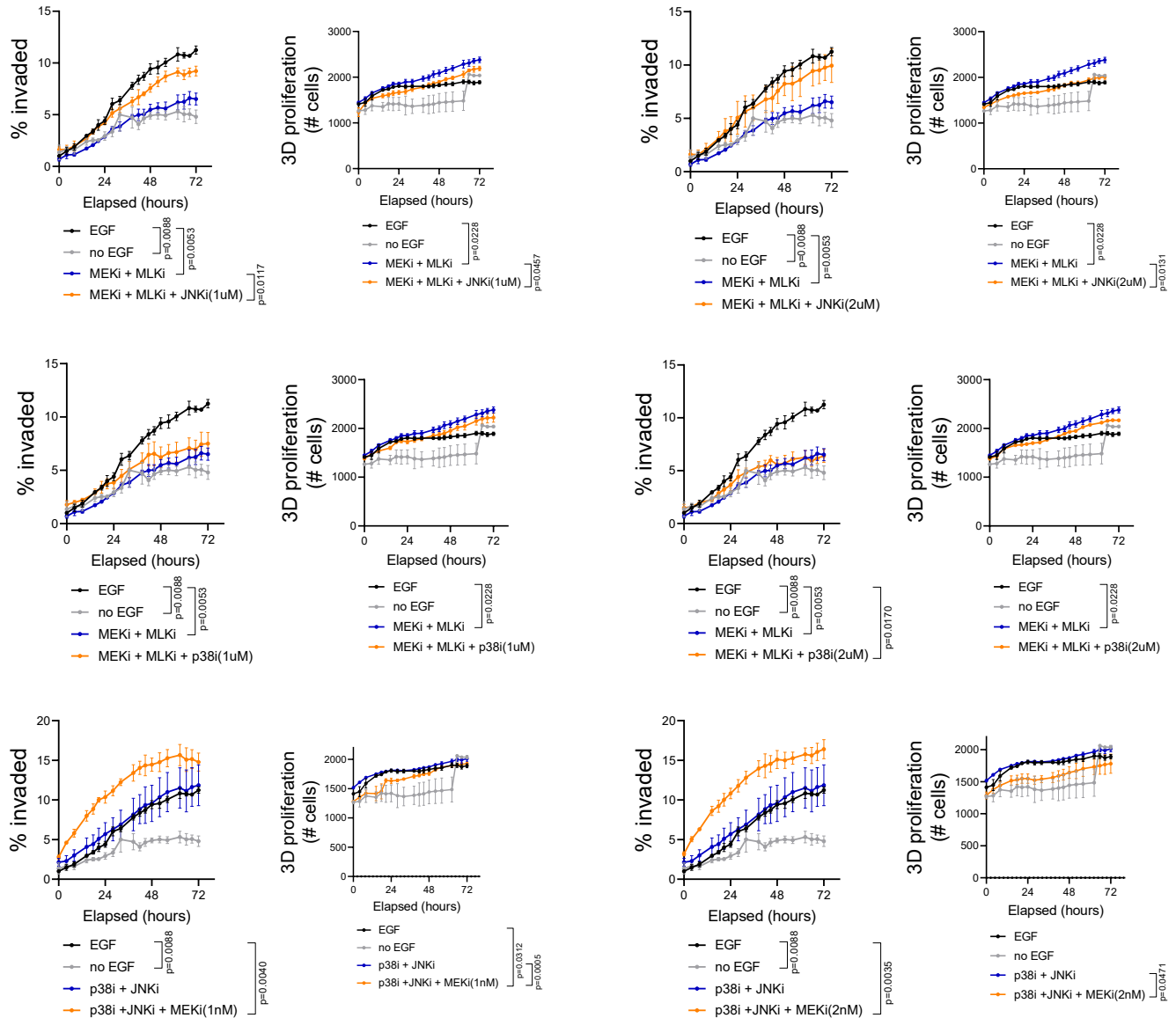


Figure 3 - figure supplement 1 (cont'd)

