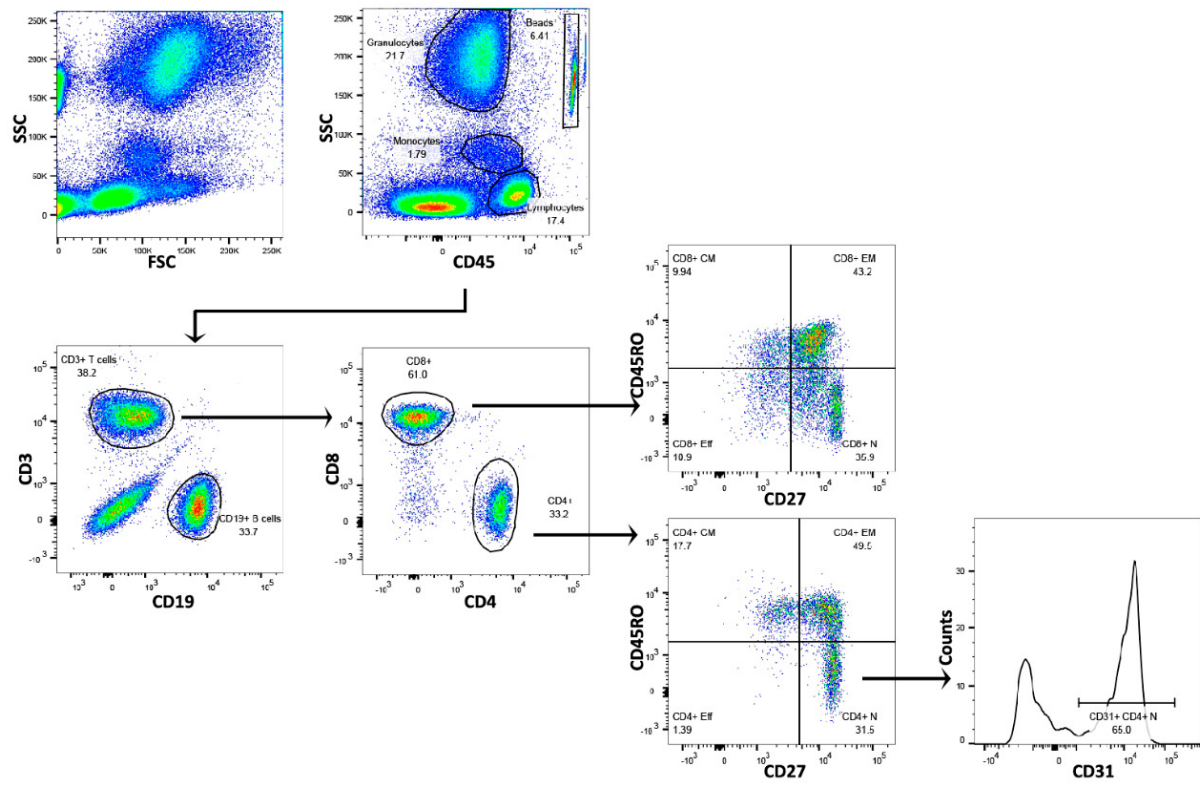


A TruCount



B Sorting strategy

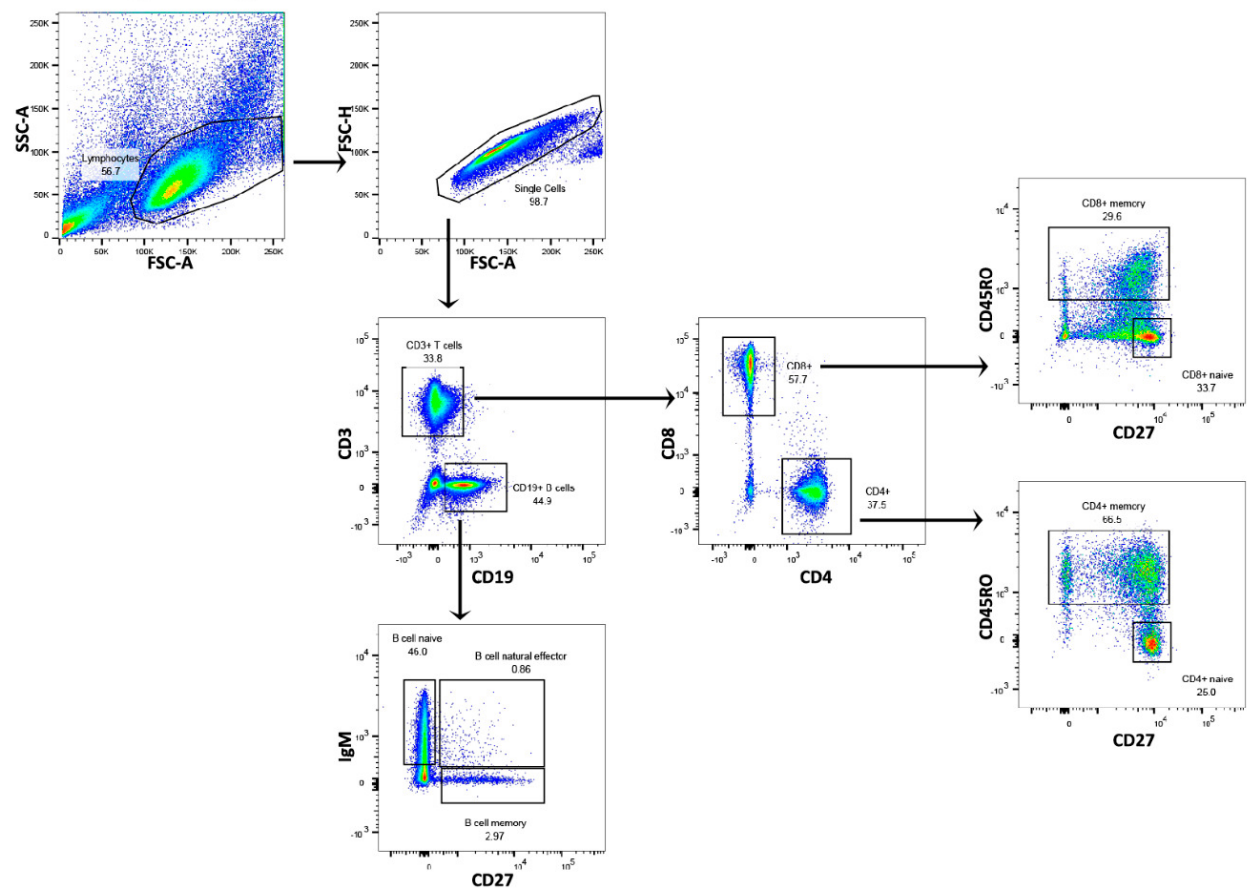


Figure 3-figure supplement 2. Gating strategy for TruCount and cell sorting. (A) TruCount gating strategy for naive ($CD27^+CD45RO^-$), central memory (CM, $CD27^+CD45RO^+$), effector memory (EM, $CD27^+CD45RO^+$) and effector ($CD27^-CD45RO^-$) $CD4^+$ and $CD8^+$ T-cells and B-cells. **(B)** Gating strategy for sorting for naive ($CD27^+CD45RO^-$) and memory ($CD45RO^+$) $CD4^+$ and $CD8^+$ T-cells and for naive (IgM^+CD27^-), Ig class-switched memory (IgM^-CD27^+) and IgM^+ memory (IgM^+CD27^+) B-cells.