

Figure 1—figure supplement 2

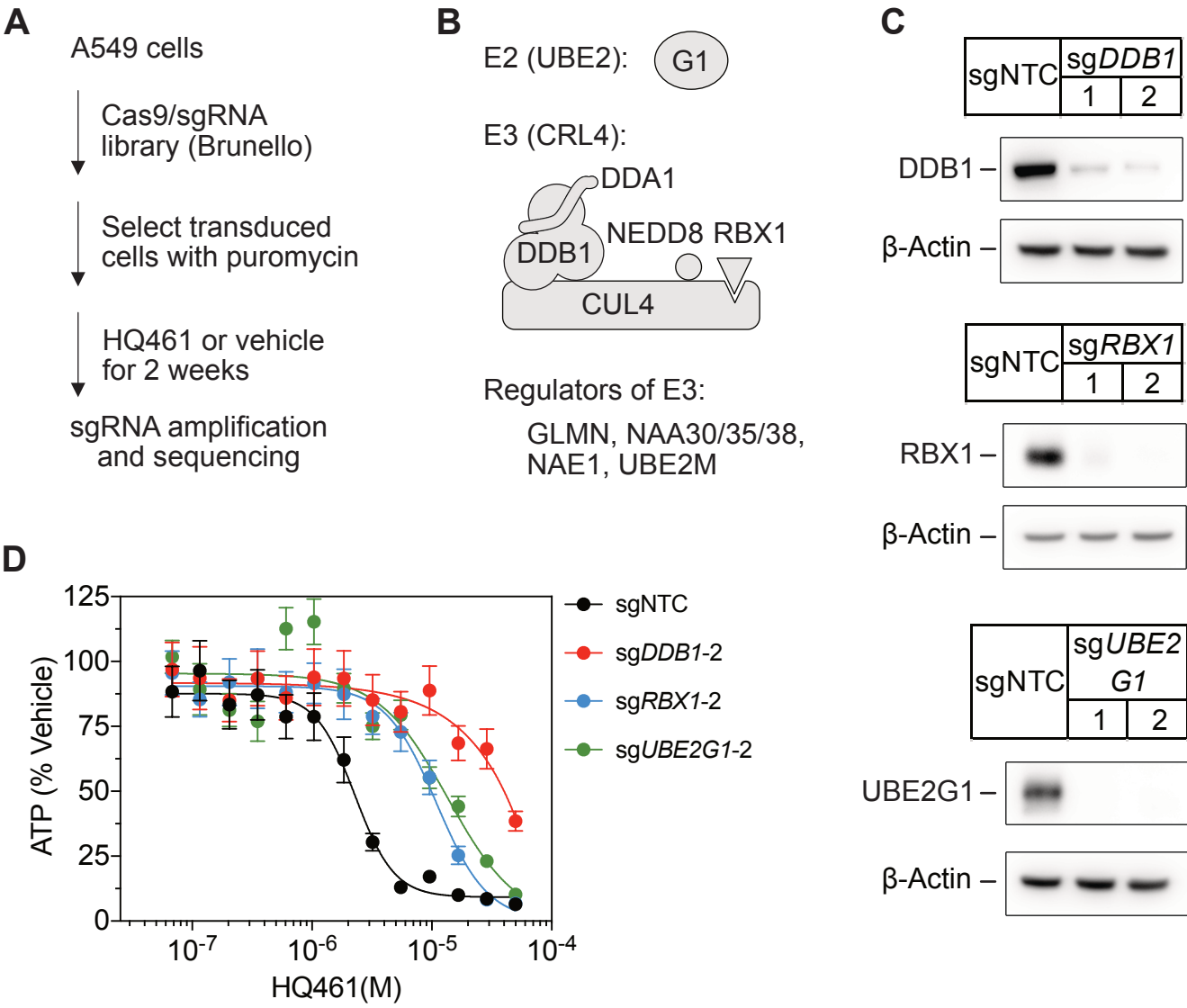


Figure 1—figure supplement 2. CRISPR-Cas9 screening for HQ461 resistance.

(A) Genome-wide CRISPR-Cas9 screening procedures.

(B) Classification of top-ranking genes into functional categories in the ubiquitin-proteasome system.

(C) Verification of successful depletion of DDB1, RBX1, and UBE2G1 by individual sgRNAs.

(D) Measurement of the HQ461 IC_{50} on the viability of A549 cells expressing sgRNAs targeting *DDB1* (IC_{50} > 28.8 μ M), *RBX1* (IC_{50} = 11.0 μ M, 95% CI: 9.1 μ M-14.2 μ M), or *UBE2G1* (IC_{50} = 13.6 μ M, 95% CI: 5.0 μ M-50 μ M) that are independent of the sgRNAs used for the experiments presented in Figure 1D. Error bars represent SEM from three biological replicates.