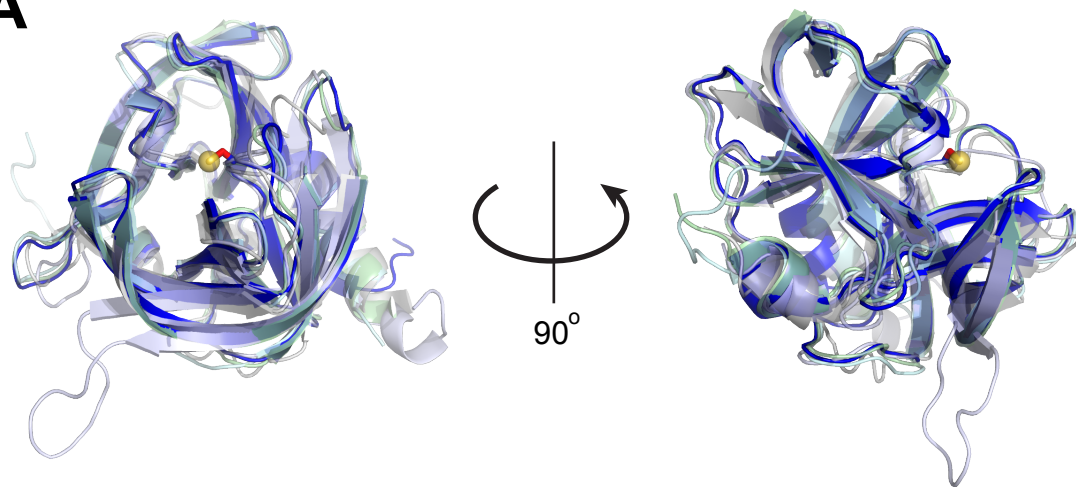
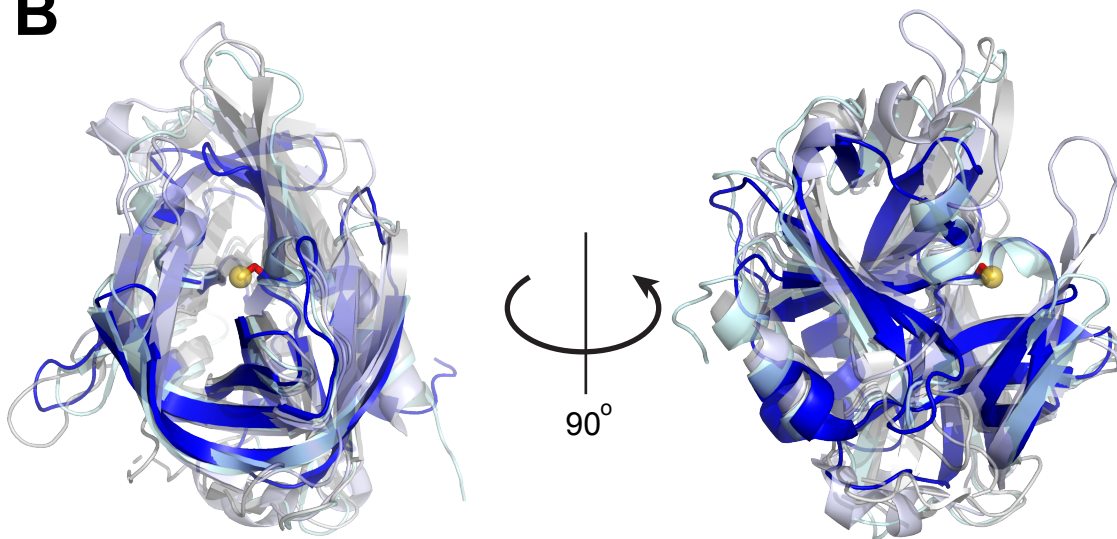


**A**

- Poliovirus (PDB 1L1N)
- Enterovirus 71 (PDB 3OSY) - RMSD = 0.732
- Cosackievirus B3 (PDB 3OSY) - RMSD = 0.659
- Enterovirus D68 (PDB 3ZV8) - RMSD = 0.692
- Human rhinovirus (PDB 2B0F) - RMSD = 1.204

**B**

- Poliovirus (PDB 1L1N)
- Hepatitis A virus (PDB 2H6M) - RMSD = 0.754 (near active site), 9.310 (overall)
- Senacavirus (PDB 6L0T) - RMSD = 0.744 (near active site), 9.080 (overall)
- Foot and mouth disease virus (PDB 2BHG) - RMSD = 1.870 (near active site), 3.051 (overall)