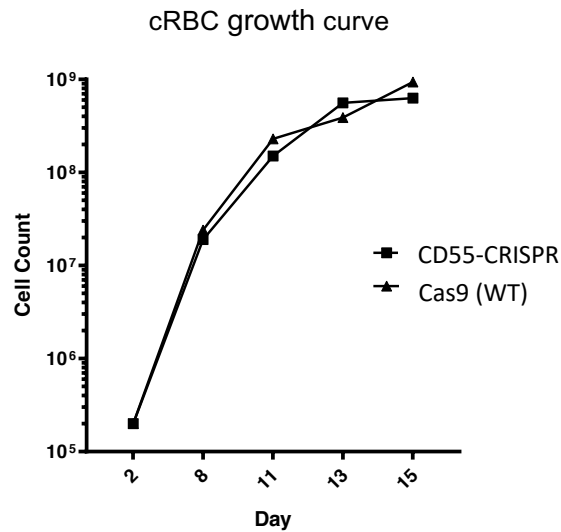


A



B

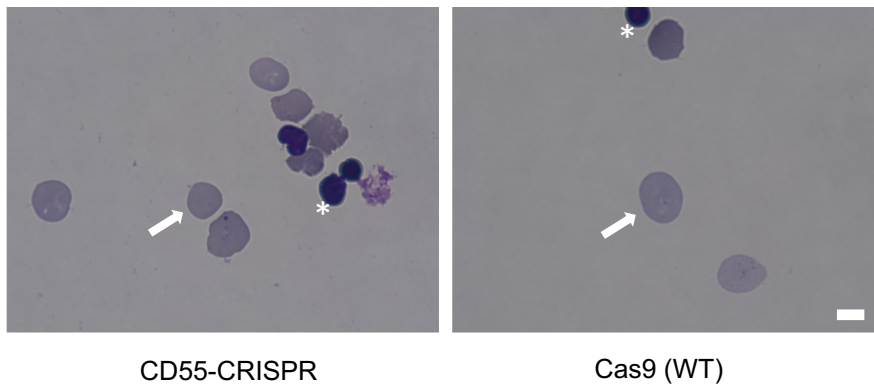


Figure S1: Deletion of *CD55* does not impact growth or maturation of cRBCs derived from CD34⁺ primary human HSPCs. (A) Growth rate of *CD55*-null erythroid progenitors from CD34⁺ HSPCs over 15 days of differentiation, compared to isogenic wild-type cells. Results are from one representative experiment. (B) Day 20 cRBCs stained with May-Grünwald and Giemsa, and visualized by light microscopy. Enucleation rate of ~90.0% was observed in both *CD55*-null and Cas9 (WT) cRBCs. White arrows indicate enucleated cells. Asterisks indicate free nuclei. Scale bar 5 μ M.