

Lipid hijacking: A unifying theme in vector-borne diseases

Anya J O'Neal^{1*}, L Rainer Butler¹, Agustin Rolandelli¹, Stacey D Gilk², Joao HF Pedra^{1*}

¹Department of Microbiology and Immunology, University of Maryland School of Medicine, Baltimore, United States; ²Department of Microbiology and Immunology, Indiana University School of Medicine, Indianapolis, United States

Abstract Vector-borne illnesses comprise a significant portion of human maladies, representing 17% of global infections. Transmission of vector-borne pathogens to mammals primarily occurs by hematophagous arthropods. It is speculated that blood may provide a unique environment that aids in the replication and pathogenesis of these microbes. Lipids and their derivatives are one component enriched in blood and are essential for microbial survival. For instance, the malarial parasite *Plasmodium falciparum* and the Lyme disease spirochete *Borrelia burgdorferi*, among others, have been shown to scavenge and manipulate host lipids for structural support, metabolism, replication, immune evasion, and disease severity. In this *Review*, we will explore the importance of lipid hijacking for the growth and persistence of these microbes in both mammalian hosts and arthropod vectors.

Shared resource utilization by diverse organisms

Vector-borne diseases contribute to hundreds of millions of infections each year and are a primary focus of global public health efforts (*WHO, 2020*). These illnesses are caused by pathogens spread by blood feeding arthropods, or vectors, and include mosquitoes, ticks, sandflies, fleas and triatomines. During a blood meal, vectors may transmit an array of microbes depending on the arthropod species specificity and global pathogen distribution. For example, the tick genus *Ixodes* transmits bacterial, viral, and parasitic agents throughout the northern hemisphere (*Eisen and Eisen, 2018; Figure 1A*). *Anopheles* and *Aedes* mosquitoes can harbor malarial parasites and arboviruses, respectively, and are found on all continents excluding Antarctica (*Neafsey et al., 2015; Leta et al., 2018; Figure 1B and C*). Triatomines, tsetse flies and sand flies are responsible for the spread of trypanosomatid parasites in Latin America, Africa, and Asia (*Vieira et al., 2018; Lukeš et al., 2018; Figure 1D–F*). Despite evolving specific host-pathogen relationships, vector-borne microbes all share the requirement for blood nutrition during acquisition and transmission.

These pathogens spend a significant portion of time in the bloodstream and are surrounded by a variety of nutrients. Some of the compounds found abundantly in the blood are lipids, which include fatty acids and cholesterol. Lipids function as membrane components, signaling molecules and energy sources in prokaryotic and eukaryotic cells. Interestingly, decades of research reveal many vector-borne pathogens have a unique dependence on host lipids for survival. For instance, tick-borne bacteria, including *Borrelia*, *Anaplasma*, and *Ehrlichia* spp. are some of the few bacterial species known to accumulate host cholesterol in their membranes (*Lin and Rikihisa, 2003a; Toledo and Benach, 2015*). *Plasmodium* spp. require lipid building blocks from mammalian and mosquito hosts to complete their life cycles (*Atella et al., 2009; Costa et al., 2018; Kilian et al., 2018*). The life cycle of flaviviruses is intimately associated with host lipid metabolism and synthesis pathways (*Leier et al., 2018*). It is important to note that microbes cannot synthesize cholesterol, and many of

*For correspondence:

AONeal@som.umaryland.edu (AJO);
jpedra@som.umaryland.edu (JHFP)

Competing interests: The authors declare that no competing interests exist.

Funding: See page 20

Received: 03 August 2020

Accepted: 20 October 2020

Published: 29 October 2020

Reviewing editor: Dominique Soldati-Favre, University of Geneva, Switzerland

© Copyright O'Neal et al. This article is distributed under the terms of the [Creative Commons Attribution License](https://creativecommons.org/licenses/by/4.0/), which permits unrestricted use and redistribution provided that the original author and source are credited.

these pathogens are limited in their ability to synthesize certain lipids or preferentially acquire lipids from the host (*Fraser et al., 1997; Lin and Rikihisa, 2003a; Ramakrishnan et al., 2013*).

Vector-borne pathogens have long fascinated scientists from multiple disciplines, including, but not limited to, microbiologists, immunologists, entomologists, epidemiologists, clinicians, and public health professionals. Recently, the scientific community has also become increasingly interested in the metabolic response to infection. The rising use of metabolomics has improved and expanded our understanding of biological processes, including lipid metabolism of vector-borne infections. However, a comprehensive and unifying Review Article describing the basic framework of lipid utilization by these pathogens is lacking.

In this Review, we aim to convey the shared role of host lipid hijacking in vector-borne diseases. We will explore how extracellular and intracellular microbes scavenge lipids from hosts, how they manipulate host factors and metabolism for invasion and growth and how they use lipids in immune evasion and disease severity. We will also describe mechanisms of lipid utilization in both mammalian hosts and arthropod vectors. Finally, we will discuss outstanding questions in the fields of microbiology and vector biology and how cutting-edge technologies may be applied. By defining shared mechanisms of resource exploitation by diverse pathogens, we hope to draw attention to the importance of these processes and how future studies could lead to novel strategies in the treatment or prevention of vector-borne diseases.

Classification of lipids

Lipids are hydrophobic compounds that structure cellular membranes, activate signaling pathways and provide energy to cells (*Figure 2*). They are defined by their insolubility in water and solubility in organic solvents (*Fahy et al., 2011*). There are eight main classifications of lipids: fatty acyls, glycerolipids, glycerophospholipids, sphingolipids, sterols, prenols, saccharolipids, and polyketides (*Fahy et al., 2011*). Fatty acyls include fatty acids (e.g. palmitate and oleate, both found abundantly in the human body) and make up the hydrophobic components of complex lipids (*Figure 2A*).

Glycerolipids and glycerophospholipids are two groups that comprise a significant portion of prokaryotic and eukaryotic membranes (*Figure 2B*). They both contain a glycerol backbone and at least one fatty acyl chain. However, they differ in their presence or absence of a polar head group (*Figure 2B*). Conversely, sphingolipids are membrane lipids that contain a sphingosine backbone. Sphingomyelin, a lipid found in animal cell membranes, is an example (*Figure 2C*). Generally speaking, bacteria and parasites are capable of synthesizing phospholipids and sphingolipids but may prefer scavenging available host lipids or animal-specific lipids.

Glycolipids consist of membrane lipids that are covalently linked to a sugar residue (*Figure 2D*). Glycolipids are not to be confused with saccharolipids, which have fatty acid chains directly linked to a sugar backbone. The most well-known example of saccharolipids is lipid A, a component of lipopolysaccharide found in Gram-negative bacterial membranes. Bacterial membranes may also contain lipoproteins on their surface, which possess both fatty acyl and polypeptide components (*Figure 2E*). Additionally, sterols are essential in eukaryotic physiology and include cholesterol, a component of animal cell membranes (*Figure 2F*). Other eukaryotes, such as parasites and fungi, may synthesize alternative sterols (e.g. ergosterol).

Importantly, lipids can act as signaling mediators. Lipid signaling molecules include sterols, lysophospholipids (a subclass of glycerophospholipids consisting of one fatty acyl chain and a polar head group), phosphoinositides (PIPns) and eicosanoids, which are derived from arachidonic acid (*Figure 2A*) or other polyunsaturated fatty acids. Lipid mediators, particularly eicosanoids, can be produced during infection and may promote or inhibit inflammation (*Dennis and Norris, 2015*). Phosphoinositides are derived from phosphatidylinositol (PI) and interact with intracellular proteins to generate second messengers, such as inositol trisphosphate (IP₃) and diacylglycerol (DAG) (*Falkenburger et al., 2010*). Although PIPn signaling has been implicated as a critical process during pathogenesis, we will primarily refer to literature on eicosanoids and lysophospholipids regarding lipid signaling. An extensive classification of lipid structures is reviewed elsewhere (*Fahy et al., 2011*).

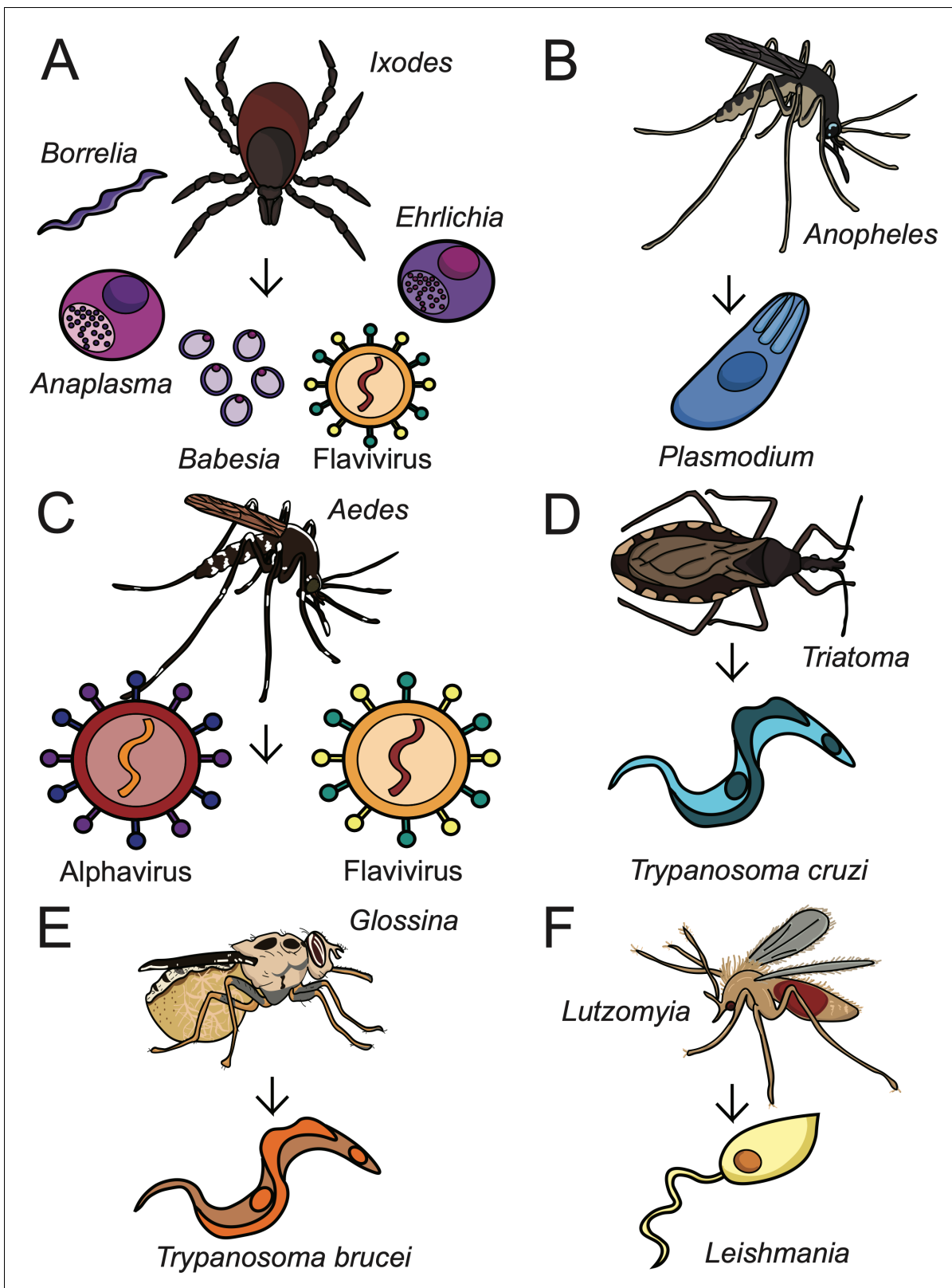


Figure 1. Arthropod-borne pathogens and their vectors. Arthropod vectors transmit various bacteria, viruses, and parasites to mammalian hosts. These pathogens infect hundreds of millions of people each year and are a primary concern of public health efforts (WHO, 2020). (A) *Ixodes* spp. ticks transmit POWV, *Borrelia*, *Anaplasma*, *Ehrlichia*, and *Babesia* spp.; (B) *Anopheles* mosquitoes transmit *Plasmodium* spp.; (C) *Aedes* (shown) and *Culex* Figure 1 continued on next page

Figure 1 continued

mosquitoes transmit various flaviviruses and alphaviruses; (D) *Triatoma* (shown) and *Rhodnius* triatomines transmit *Trypanosoma cruzi*; (E) *Glossina* tsetse flies transmit *Trypanosoma brucei*; and (F) *Lutzomyia* (shown) and *Phlebotomus* sand flies transmit *Leishmania* spp.

Lipid scavenging by extracellular pathogens

Membrane formation is a critical step in microbial proliferation. Microbes are generally divided into extracellular or intracellular organisms based on their metabolic requirements and lifecycles. Extracellular microbes often harbor their own replication and synthesis machinery. However, vector-borne pathogens may lack lipid synthesis enzymes and must acquire these components from the host (**Figure 3**). In this section, we will discuss how extracellular vector-borne pathogens scavenge host lipids for survival.

Borrelia

Borrelia is a genus of tick-borne, extracellular spirochetes that includes *B. burgdorferi*, the causative agent of Lyme disease. They are loosely considered 'Gram-negative' bacteria; yet, their membranes lack characteristic Gram-negative features such as lipopolysaccharide (LPS) and diaminopimelic acid in their peptidoglycan layer (*Yanagihara et al., 1984; Takayama et al., 1987*). Instead, *Borrelia* spp. use phospholipids, cholesterol and lipoproteins for structural support of their bacterial envelope (*Brandt et al., 1990; Belisle et al., 1994; Toledo and Benach, 2015*). The incorporation of host lipids is strongly tied to their unique membrane formation. In this Review, we will refer to studies on Lyme disease-causing *Borrelia*, also known as the *B. burgdorferi* sensu lato complex.

B. burgdorferi is capable of phospholipid synthesis and predominantly incorporates phosphatidylglycerol (PG) and phosphatidylcholine (PC) into its membrane (*Hossain et al., 2001; Wang et al., 2004*). However, these bacteria lack the enzymes to synthesize fatty acids, such as palmitate or oleate (*Fraser et al., 1997*). Therefore, they acquire these fatty acids from hosts and integrate them into bacterial phospholipids and lipoproteins (*Belisle et al., 1994; Hossain et al., 2001; Figure 3A*). Lipoproteins are an immunogenic component of *Borrelia* membranes and have several functions, including critical roles in the colonization of the blacklegged tick *Ixodes scapularis* (*Brandt et al., 1990; Pal et al., 2000; Pal et al., 2004*). Despite their extracellular lifecycle, there is evidence that *B. burgdorferi* infection influences lipid metabolism in the host. A recent study in Lyme disease patients demonstrated that *B. burgdorferi* infection increases serum levels of lysophosphatidylcholine (LPC), a variant of PC that contains one fatty acyl chain (*Fitzgerald et al., 2020*). Lysophospholipids are generated as a byproduct of phospholipid degradation or an intermediate of phospholipid synthesis. Lysophospholipid accumulation during bacterial infection may be a result of bacterial stress, lipoprotein synthesis, or host response to infection (*Zheng et al., 2017*). However, the significance of this increase during Lyme disease has yet to be explored.

Bacteria cannot synthesize cholesterol. However, *Borrelia* are one of a few bacterial species that integrate host cholesterol into their membranes (*Toledo and Benach, 2015; Figure 3A*). In mammals, *B. burgdorferi* scavenges cholesterol directly from the plasma membranes of host cells (*Crowley et al., 2013*). It may also acquire cholesterol from the blood meal, as ticks fed on mice infected with *Borrelia* spp. display dysregulated cholesterol levels compared to uninfected controls (*Hoxmeier et al., 2017*). Uniquely, *B. burgdorferi* organizes cholesterol and cholesterol glycolipids into eukaryotic-like lipid rafts on their inner or outer membranes (*LaRocca et al., 2010; Toledo et al., 2018*). Inner and outer membrane lipid rafts appear to be distinct from each other. For example, outer membrane rafts contain well-defined lipoproteins involved in colonization, such as the outer membrane proteins (Osp) A and B, while inner membrane rafts possess proteins with signaling and transport functions, including ATP-binding cassette transporters (*Toledo et al., 2014; Toledo et al., 2018*). OspA and OspB were also shown to selectively associate with cholesterol glycolipids found in lipid rafts, while the lipoprotein OspC did not, suggesting the specificity of their interactions contributes to lipid raft composition (*Toledo et al., 2014; Toledo et al., 2015b*). Thus, these bacteria rely on host lipids for membrane organization, structure, and survival.

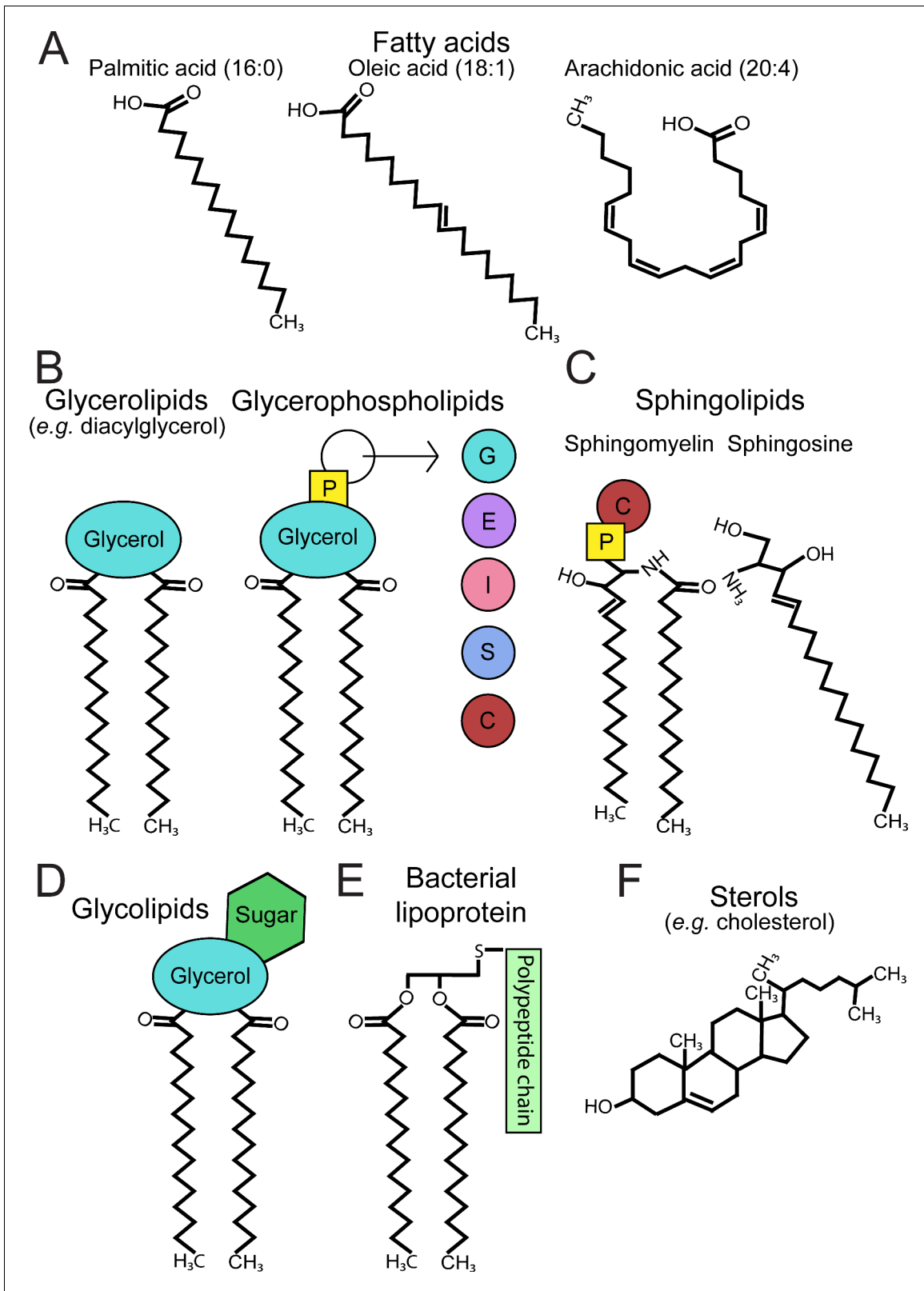


Figure 2. Classification of membrane lipids. Lipids structure the membranes of both eukaryotic and prokaryotic cells. (A) Fatty acids are hydrophobic building blocks for many membrane lipids. Common fatty acids include palmitic acid (16:0), oleic acid (18:1), and arachidonic acid (20:4), whose structures differ in the number of carbons and number of double bonds per chain. The presence of double bonds in the chains of certain fatty acids, such as oleic acid and arachidonic acid, makes these lipids unsaturated. (B) Glycerolipids and glycerophospholipids are two classifications of lipids
 Figure 2 continued on next page

Figure 2 continued

found in eukaryotic and prokaryotic membranes. Glycerolipids (e.g. diacylglycerol) contain a glycerol backbone and at least one fatty acyl chain. Glycerophospholipids, conversely, are glycerolipids that contain a polar head group comprised of phosphate and an alcohol, and are named accordingly (e.g. PG, PE, PI, PS, PC). In the membrane, these lipids largely consist of two fatty acyl chains connected to the glycerol backbone. (C) Sphingolipids are membrane lipids that possess a sphingosine backbone. These include sphingomyelin, which contains a sphingosine backbone, one fatty acyl chain, and either phosphocholine (shown) or phosphoethanolamine. (D) Glycolipids refer to membrane lipids, such as glycerolipids or sphingolipids, that are covalently linked to a sugar residue. (E) Bacterial lipoproteins are membrane molecules that possess an exposed polypeptide chain and either two (diacyl; shown) or three (triacyl) fatty acyl chains. (F) Sterols are essential in eukaryotic physiology and include the animal sterol cholesterol, a critical component of cell membranes. p = phosphate, G = glycerol, E = ethanolamine, I = inositol, S = serine, C = choline, PG = phosphatidylglycerol, PE = phosphatidylethanolamine, PI = phosphatidylinositol, PS = phosphatidylserine, PC = phosphatidylcholine.

Trypanosomatida

Trypanosomatids, which include *Trypanosoma cruzi*, *Trypanosoma brucei*, and *Leishmania* spp., are single-cell flagellated parasites that cause a high burden of disease in developing countries. *T. cruzi* and *T. brucei* are the etiological agents of Chagas disease and African sleeping sickness respectively, while *Leishmania* spp. cause leishmaniasis (Field et al., 2017). *T. cruzi* and *Leishmania* spp. are extracellular in the arthropod vector and transmitted to mammals in their trypomastigote (*T. cruzi*) or promastigote (*Leishmania*) forms. These parasites will then infect mammalian cells and undergo intracellular stages. Conversely, *T. brucei* is an exclusively extracellular parasite. Trypanosomatids have developed different strategies to survive under dynamic physiological conditions, including fluctuations in available lipids during their life cycles (Lukeš et al., 2018; Landfear and Zilberstein, 2019; Figure 3B and C).

Extracellular trypanosomatids scavenge host lipids to support their proliferation. In the mammalian host, trypanosomatids internalize low-density lipoprotein (LDL) and high-density lipoprotein (HDL), whose hydrolysis can yield fatty acids and sterols for parasite growth (Gillett and Owen, 1992; Coppens et al., 1995; Andrade-Neto et al., 2011; De Cicco et al., 2012). They may also acquire free lipids in the serum, including free fatty acids and lysophospholipids for their membranes (Voorheis, 1980; Berman et al., 1987; Bowes et al., 1993). However, if there is an exogenous limitation on fatty acids, *T. brucei* may synthesize these lipids de novo from ketogenic carbon sources (Millerioux et al., 2018; Figure 3B). *T. brucei* may endogenously produce fatty acids from the type II fatty acid synthase pathway (FASII) or from the microsomal elongase pathway, which uses the enzyme acetyl coenzyme A carboxylase (ACC) (Millerioux et al., 2018; Ray et al., 2018). The activity of this enzyme is regulated by lipid abundance in the tsetse fly, therefore maintaining a balance between lipid scavenging and synthesis (Ray et al., 2018).

In the triatomine vector, *T. cruzi* epimastigotes use lipids from the blood meal for differentiation and membrane composition (Figure 3C). The blood meal contains components such as phospholipids, triacylglycerols, and sphingomyelin that are quickly degraded into free fatty acids by the vector. These lipids are then incorporated into epimastigotes (Wainszelbaum et al., 2003). Epimastigotes may scavenge additional lipid building blocks from the host to synthesize their surface molecules. For example, *T. cruzi* requires inositol for many of their membrane components, such as glycoinositolphospholipids, and utilizes transporters to acquire it for their synthesis (Einicker-Lamas et al., 2007). Interestingly, the blood meal possesses signaling lipids, including oleic acid, LPC, and lysophosphatidic acid that promote the differentiation and proliferation of these parasites in triatomines (Wainszelbaum et al., 2003; Chagas-Lima et al., 2019). If epimastigotes internalize excess lipids, they store them in specialized lipid organelles for later use (Pereira et al., 2018). Ultimately, these extracellular pathogens rely on host lipids to complete their life cycles.

Cellular invasion

There are a variety of strategies intracellular microbes employ to successfully invade host cells. Often, host lipids such as membrane cholesterol are co-opted for cellular entry. Cholesterol regulates host cell plasma membrane fluidity and helps structure lipid rafts (Simons and Ehehalt, 2002). For example, the Rickettsiales are a group of obligate intracellular bacteria and comprise the tick-borne bacterial genera *Anaplasma* and *Ehrlichia*. *A. phagocytophilum* and *E. chaffeensis*, two human pathogens transmitted by Ixodidae ticks, infect granulocytes and monocytes, respectively

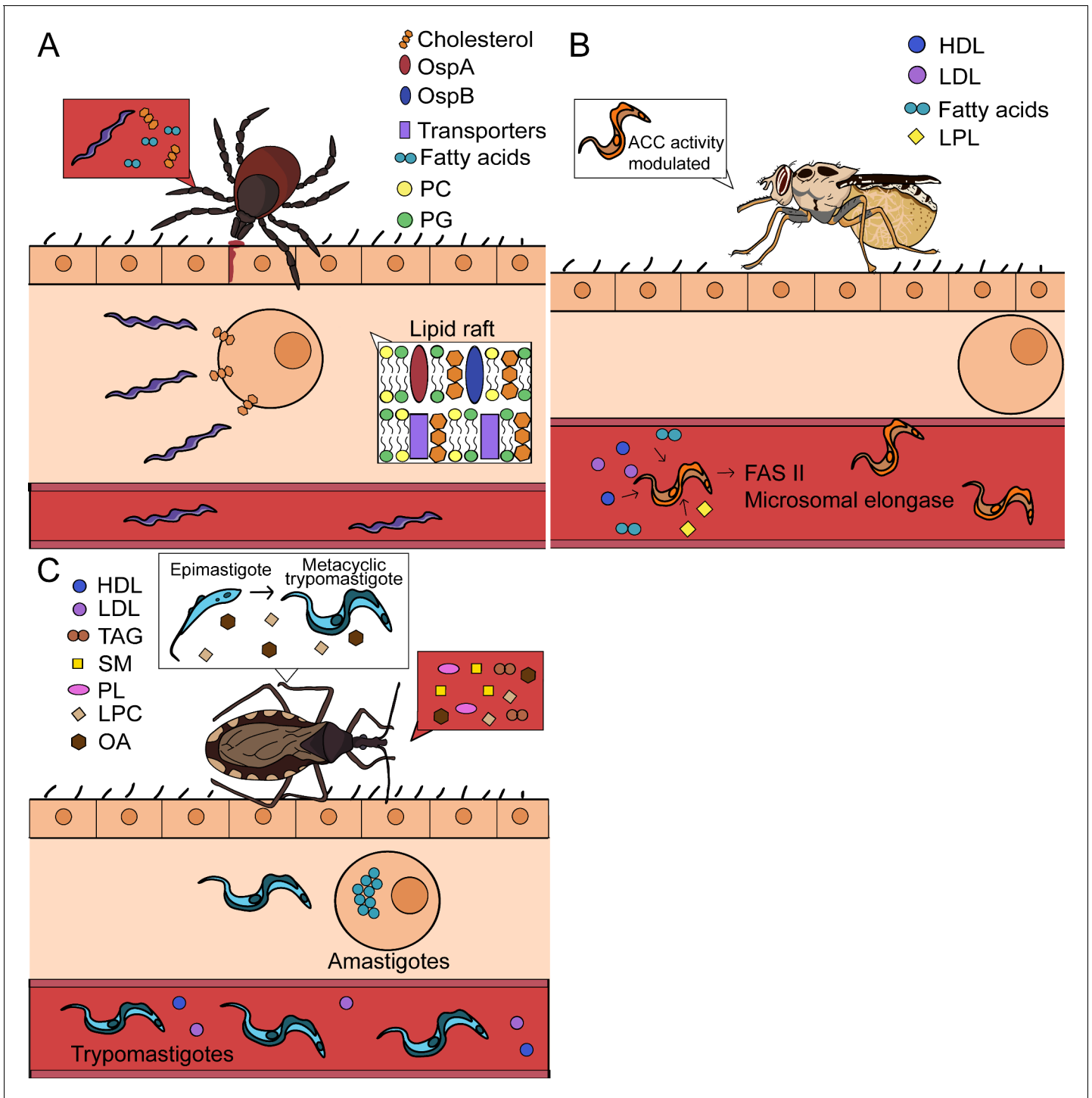


Figure 3. Lipid scavenging by extracellular arthropod-borne pathogens. Certain pathogens can obtain nutrients directly from their environment and may not require host cell invasion for lipid uptake. (A) *Borrelia* spp. are extracellular bacteria and acquire lipids directly from mammalian cells and the blood. *B. burgdorferi* also organizes its membrane into eukaryotic-like lipid rafts. (B) *Trypanosoma brucei* is extracellular in both mammalian and arthropod hosts. These parasites acquire various lipids from the blood and can synthesize their own fatty acids using the type II fatty acid synthase system (FASII) and the microsomal elongase pathway when resources are restricted. In the tsetse fly, the enzyme acetyl coenzyme A carboxylase (ACC) regulates the microsomal elongase pathway based on lipid abundance. (C) *Trypanosoma cruzi* is extracellular in its trypomastigote and epimastigote forms. Within the triatomine, epimastigotes acquire various lipids from the blood meal. Additional lipids function as signaling molecules and promote the differentiation from epimastigotes into metacyclic trypomastigotes. At this stage, metacyclic trypomastigotes may be deposited in the skin of a mammal before invading cells to become amastigotes. Intracellular amastigotes transform into trypomastigotes, burst out of host cells, and enter the

Figure 3 continued on next page

Figure 3 continued

bloodstream. PC = phosphatidylcholine, PG = phosphatidylglycerol, HDL = high density lipoprotein, LDL = low density lipoprotein, LPL = lysophospholipid, TAG = triacylglycerol, SM = sphingomyelin, PL = phospholipid, LPC = lysophosphatidylcholine, OA = oleic acid.

(**McClure et al., 2017**). To invade cells, these bacteria utilize cholesterol-containing lipid rafts in host membranes for entry (**Lin and Rikihisa, 2003b**). Lipid rafts often contain receptors required for entry and enable a cascade of signaling events leading to engulfment of the pathogen by the host cell (**Simons and Ehehalt, 2002**).

Membrane cholesterol is also important for arboviral invasion. Alphaviruses are the only genus of the *Togaviridae* family and are positive sense, single-stranded RNA mosquito-borne viruses, including Chikungunya (CHIKV), Semliki Forest (SFV), and Sindbis (SINV) viruses. They have broad tropism and can cause severe pathology by infecting neurons in the central nervous system (**Atkins, 2013**). Alphaviruses enter cells through the endocytic pathway, where the acidic pH of the endosomes causes the fusion of viral and endosome membranes and allows viral RNA to be released into the cytoplasm (**Phalen and Kielian, 1991**). Membrane cholesterol was found to play a critical role in the ability of SFV and SINV to fuse with the endosomal membrane, as viral fusion and replication were interrupted in cholesterol-depleted cells (**Phalen and Kielian, 1991; Lu et al., 1999**). Interestingly, neither SFV nor SINV rely on lipid rafts to successfully fuse with target membranes, suggesting they require cholesterol for membrane fluidity (**Waarts et al., 2002**).

Intracellular parasites may use membrane lipids and host membrane repair pathways to facilitate entry. Invading *Leishmania* and *T. cruzi* require membrane cholesterol similar to other intracellular pathogens (**Pucadyil et al., 2004; Fernandes et al., 2007; Kumar et al., 2016**). However, unlike the alphaviruses, *T. cruzi* utilizes lipid rafts containing sphingolipids, cholesterol and the ganglioside GM1 for cellular entry (**Fernandes et al., 2007; Barrias et al., 2007; Hissa et al., 2012**). The mechanism of *T. cruzi* invasion is unique because it triggers a plasma membrane repair pathway to drive internalization (**Tardieux et al., 1992**). After induction of a membrane lesion or injury, lysosomes are recruited to the host plasma membrane to provide membranes for repair. These lysosomes contain acid sphingomyelinase (ASM), an enzyme that converts sphingomyelin to ceramide, which promotes the endocytosis of membrane lesions. It was shown that *T. cruzi* creates lesions in the host cell plasma membrane and uses recruited lysosomal membranes to create the parasitophorous vacuole, or replication niche (**Tardieux et al., 1992; Fernandes et al., 2011**). These parasites then require ASM to generate ceramide and drive internalization of the parasite by endocytosis (**Fernandes et al., 2011**). Thus, *T. cruzi* co-opts lipid membrane repair processes to successfully invade host cells.

Some parasites and viruses enter cells through host lipid receptors and transporters. *Flaviviridae* are a family of positive sense, single-stranded RNA viruses with diverse tropisms, including dengue (DENV), yellow fever (YFV), West Nile (WNV), Zika (ZIKV), and Powassan (POWV) viruses. Mosquitoes transmit the majority of these pathogens, excluding POWV, which is a member of the tick-borne encephalitis virus (TBEV) complex. Flaviviral entry has been shown to be impacted by interactions with lipid-binding proteins. DENV infection is enhanced by the interaction between viral particles and serum apolipoprotein A-I, which is a major component of HDL (**Li et al., 2013**). This interaction assists DENV entry through scavenger receptor class B type I (SR-BI), a surface lipid transporter, and leads to severe disease (**Li et al., 2013**). Similarly, the parasite *T. cruzi* exploits other lipid receptors for invasion by binding serum lipoproteins. *T. cruzi* binds LDL, which may interact with LDL receptor (LDLR) to facilitate fusion and entry into the cell (**Nagajyothi et al., 2011**).

Additional lipid receptors, including phosphatidylserine (PS) receptors, play important roles in arboviral invasion. PS receptors are phospholipid-binding proteins that mediate the removal of apoptotic cells by phagocytosis. Two of these receptor families, TIM and TAM, were shown to facilitate DENV entry by interacting with PS on viral envelopes (**Meertens et al., 2012**). TIM1 appears to promote the entry and replication of other enveloped arboviruses as well, including various alphaviruses (**Jemielity et al., 2013**). Taken together, these examples emphasize that vector-borne microbes utilize membrane lipids and lipid receptors to provide an avenue for entry.

Intracellular growth

Intracellular pathogens require resources and machinery to survive in host cells. These microbes often have reduced genomes through evolutionary selection and cannot synthesize necessary products on their own, including lipids required for membrane formation. Thus, pathogens hijack host enzymes and biosynthesis pathways to promote replication and growth (**Table 1**). The dual host environment requires vector-borne pathogens to rewire both arthropod and mammalian metabolism. How intracellular arthropod-borne infections utilize host lipids to promote growth is discussed below.

Bacteria

The intracellular tick-borne bacteria *A. phagocytophilum* and *E. chaffeensis* interact with host lipids for replication. Following invasion, infectious bacteria, termed dense-core cells, establish a niche within host vacuoles. Then, these bacteria convert into a non-infectious, replicative form (reticulate cells) and undergo rapid division. Intracellular bacteria must traffic host resources and components, including lipids, to their replicative niche (**Table 1**). The replicating bacteria form morulae in the cell, convert back into their infectious dense-core form, and eventually are released by exocytosis or lysis (**McClure et al., 2017**).

Similar to *Borrelia*, *Anaplasma* and *Ehrlichia* spp. do not have LPS or diaminopimelic acid and instead utilize cholesterol and other lipids for their membranes (**Lin and Rikihisa, 2003a**). Thus, they have developed ways to hijack host lipid pathways to complete replication. Cholesterol accumulation and exploitation mechanisms have been well defined in these agents (**Samanta et al., 2017**). *A. phagocytophilum* obtains its cholesterol from exogenous LDL and will increase LDLR expression to elevate total cellular cholesterol (**Xiong et al., 2009**). Following the hydrolysis of LDL, *A. phagocytophilum* hijacks cholesterol trafficking pathways in the cell. For example, *A. phagocytophilum* targets flotillins and Neimann-Pick type C1 (NPC1)-bearing vesicles to redirect cholesterol to bacterial inclusions (**Xiong and Rikihisa, 2012; Xiong et al., 2019**). It was also shown that inhibiting cholesterol efflux from lysosomes halts *A. phagocytophilum* infection, further demonstrating their dependence on host cholesterol (**Cockburn et al., 2019**).

Moreover, these bacteria manipulate host glycerolipid synthesis for proliferation (**Shaw et al., 2017; Lin et al., 2020**). *E. chaffeensis* depends on host glycerolipids and uses autophagy and endocytosis to traffic host membrane lipids to vacuoles (**Lin et al., 2020**). Interestingly, the recruitment of glycerophospholipids leads to vesicle formation within bacterial inclusions, potentially acting as a membrane reserve for quickly replicating *E. chaffeensis* (**Lin et al., 2020**). Furthermore, these bacteria may prefer specific glycerolipids for their proliferation. During infection with *A. phagocytophilum*, these bacteria increase levels of 1-palmitoyl-2-oleoyl-sn-glycero-3-phosphoglycerol (POPG), 1-palmitoyl-2-oleoyl-sn-glycero-3-diacylglycerol (PODAG) and 1-myristoyl-2-palmitoyl-sn-glycero-3-phosphocholine (MPPC) in human HL60 cells (**Shaw et al., 2017**). Although the source of these lipids has not been identified, POPG and PODAG were demonstrated to activate immune pathways in the tick, suggesting these lipids are molecular patterns of infection (**Shaw et al., 2017**).

The role of lipid metabolism in the vector, *Ixodes scapularis*, is less understood. Lipid transport and absorption proteins from the blood meal may accumulate in tick midguts infected with *A. phagocytophilum* implicating a role for lipid utilization in the arthropod (**Villar et al., 2016**). To date, changes in tick lipid metabolism have only been observed during fungal and *B. burgdorferi* infection (**Hoxmeier et al., 2017; Sá et al., 2018**). Whether mechanisms of lipid utilization by intracellular bacteria are conserved during tick colonization remains to be studied.

Viruses

The lifecycle of many flaviviruses are intimately tied to host lipids and aid in their replication and assembly (**Leier et al., 2018; Table 1**). Following cellular entry, these viruses uncoat and release their genome into the cytoplasm. The genome is translated into a polyprotein and cleaved into components that mediate replication. These viral proteins will then curve mammalian ER lipid bilayers into unique subcellular structures such as convoluted membranes and vesicles where viral replication occurs (**Welsch et al., 2009; Gillespie et al., 2010; Cortese et al., 2017**). Assembled virions bud off from the ER and undergo additional steps in the Golgi.

Table 1. Lipid hijacking by intracellular arthropod-borne pathogens.

Microbe	<i>Anaplasma and Ehrlichia</i>	Flaviviruses	Alphaviruses
Vector	<ul style="list-style-type: none"> Accumulation of lipid transport and absorption proteins from the blood meal in the vector (<i>Villar et al., 2016</i>) 	<ul style="list-style-type: none"> Increase phospholipid and sphingolipid synthesis (<i>Perera et al., 2012; Melo et al., 2016; Chotiwan et al., 2018; Vial et al., 2019</i>) Replication occur on ER; form replication vesicles but not convoluted membranes (<i>Junjhon et al., 2014</i>) Increase aminophospholipid concentrations by regulating AGPAT1 expression in mosquito cells (DENV) (<i>Vial et al., 2019</i>) Maintain cholesterol levels in mosquito cells by downregulating LRP-1 (DENV) (<i>Tree et al., 2019</i>) Increase lipid droplets in the cell (<i>Barletta et al., 2016</i>) 	<ul style="list-style-type: none"> Increase lipid droplets in the cell (<i>Barletta et al., 2016</i>)
Mammal	<ul style="list-style-type: none"> Accumulate cholesterol in membranes, elevate cellular cholesterol levels and traffic cholesterol to inclusions using flotillins and NPC1-bearing vesicles (<i>A. phagocytophilum</i>) (<i>Xiong et al., 2009; Xiong and Rikihisa, 2012; Xiong et al., 2019</i>) Manipulate glycerolipid synthesis (<i>A. phagocytophilum</i>) (POPG, PODAG, MPPC) (<i>Shaw et al., 2017</i>) Recruit membrane phospholipids to bacterial vacuoles (<i>E. chaffeensis</i>) (<i>Lin et al., 2020</i>) 	<ul style="list-style-type: none"> Viral replication curves the ER lipid bilayer into vesicles and convoluted membranes (<i>Leier et al., 2018</i>) Increase sphingolipid synthesis and require ceramide for replication vesicles (WNV, ZIKV) (<i>Martín-Acebes et al., 2014; Leier et al., 2020</i>) Recruit host fatty acid synthase to replication sites for fatty acid synthesis (DENV) (<i>Heaton et al., 2010</i>) Increase intracellular cholesterol levels (DENV, WNV), induce cholesterol accumulation at the ER (DENV, WNV), and bring in HMGR to replication sites for cholesterol synthesis (DENV) (<i>Mackenzie et al., 2007; Rothwell et al., 2009; Soto-Acosta et al., 2013; Soto-Acosta et al., 2017</i>) Interact with lipid droplets on the ER for assembly (DENV) (<i>Samsa et al., 2009</i>) Lipid droplets are consumed/reabsorbed by the ER for fatty acids and energy (DENV) (<i>Heaton and Randall, 2010; Peña and Harris, 2012; Zhang et al., 2018</i>) 	<ul style="list-style-type: none"> Require intracellular cholesterol transport (CHIKV) (<i>Wichit et al., 2017</i>) Nonstructural proteins colocalize with lipid droplets (<i>Remenyi et al., 2017</i>) Use Akt pathway to drive fatty acid synthesis (SFV) (<i>Mazzon et al., 2018</i>)
Microbe	<i>Plasmodium</i>	<i>Babesia</i>	
Vector	<p>Oocysts:</p> <ul style="list-style-type: none"> Acquires lipids through lipophorin (<i>Atella et al., 2009; Costa et al., 2018</i>) Availability of lipophorin-transported lipids impacts growth in the mosquito and infectivity, virulence, quantity, and metabolism of sporozoites (<i>Costa et al., 2018; Werling et al., 2019</i>) 	Unknown	
Mammal	<p>Liver stage:</p> <ul style="list-style-type: none"> Scavenges PC and extracellular and intracellularly synthesized cholesterol (<i>Labaid et al., 2011; Itoe et al., 2014</i>) Promotes host lipid biosynthesis by inhibiting AMPK pathway (<i>Kluck et al., 2019</i>) Uses parasite fatty acid synthesis (FAS) II pathway in late liver stage (<i>Yu et al., 2008; Vaughan et al., 2009</i>) <p>Blood stage:</p> <ul style="list-style-type: none"> Scavenges fatty acids, choline, ethanolamine, and serine from blood to synthesize phospholipids (PC, PE) (<i>Mikkelsen et al., 1988; Wein et al., 2018; Tanaka et al., 2019</i>) Uses host Kennedy and PMT pathways to synthesize phospholipids (<i>Ancelin and Vial, 1989; Pessi et al., 2004</i>) Upregulates triacylglycerol, diacylglycerol, PG, etc. (<i>Gulati et al., 2015</i>) <p>Sexual stages:</p> <ul style="list-style-type: none"> PMT pathway is required for making gametocytes (<i>Bobenchik et al., 2013</i>) Availability of polyunsaturated fatty acids and downregulation of lysophospholipids in the blood triggers gametocytogenesis (<i>Brancucci et al., 2017; Tanaka et al., 2019</i>) Gametocytes have decreased phospholipids, increased ceramides and sphingolipids (<i>Gulati et al., 2015</i>) 	<ul style="list-style-type: none"> Causes low HDL levels in patients (<i>Cunha et al., 2000; Bock et al., 2017</i>) Causes low HDL levels in canines and cattle (<i>Goodger et al., 1990; Milanović et al., 2019</i>) Synthesizes PC in the blood stage (<i>Florin-Christensen et al., 2000</i>) 	
Microbe	<i>Leishmania*</i>	<i>Trypanosoma cruzi*</i>	

Table 1 continued on next page

- Mammal
- Increases lipid concentrations by regulating expression of lipid metabolism genes (*Osorio y Fortéa et al., 2009; Rabhi et al., 2012; Semini et al., 2017*)
 - Sequesters cholesterol in parasitophorous vacuoles and incorporates it in membranes; retains cholesterol using host V-ATPases (*Tewary et al., 2006; Semini et al., 2017; Pessoa et al., 2019*)
 - Induces lipid body formation (*Rabhi et al., 2016*)
 - Scavenges phospholipids and sphingolipids to make parasite-specific lipids, e.g. the sphingolipid inositol phosphorylceramide (*Winter et al., 1994; Henriques et al., 2003; Zhang et al., 2005*)
 - Contains increased cholesterol and free fatty acids, decreased ergosterol and triglycerides (*Bouazizi-Ben Messaoud et al., 2017*)
 - Scavenges long chain fatty acids from pools of triacylglycerols for membranes (*Gazos-Lopes et al., 2017*)
 - Upregulates levels of cholesterol and LDL (*Johndrow et al., 2014*)
 - Requires host fatty acid oxidation for parasite growth (*Caradonna et al., 2013; Li et al., 2016*)
 - Induces lipid body formation (*D'Avila et al., 2011*)

*Extracellular stages in the vector.

Because flaviviruses cannot make lipids on their own, they alter the cellular lipidome to promote replication. For example, flaviviruses manipulate host cholesterol to accomplish a number of functions including entry, replication, assembly, and budding (*Osuna-Ramos et al., 2018*). DENV and WNV upregulate intracellular cholesterol levels, induce its accumulation at the ER and require it for the formation of replication sites (*Mackenzie et al., 2007; Rothwell et al., 2009; Soto-Acosta et al., 2013; Soto-Acosta et al., 2017*). Because cholesterol is important for membrane remodeling, it is likely that these viruses use host cholesterol to maintain the membrane architecture of replication complexes (*Soto-Acosta et al., 2017*).

Another important component of flavivirus replication complexes are sphingolipids. The sphingolipid ceramide is required for vesicle biogenesis, an important process during flaviviral replication, and may be generated by the degradation of sphingomyelin (*Trajkovic et al., 2008*). It was shown that both WNV and ZIKV increase cellular sphingolipid levels, and blocking the conversion from sphingomyelin to ceramide inhibits their replication (*Martín-Acebes et al., 2014; Martín-Acebes et al., 2016; Leier et al., 2020*). Using ZIKV, it was also demonstrated that ceramide is redistributed to replication membranes, suggesting their involvement in flaviviral vesicle formation (*Leier et al., 2020*). Patients infected with flaviviruses exhibit lipidomic changes, such as dysregulated sphingolipids levels and perturbed lipid metabolic pathways, pointing to a critical process during viral infection (*Cui et al., 2013; Melo et al., 2017*).

How these viruses acquire host lipids is heavily studied. During the formation of ER invaginations, host factors are recruited to replication complexes to provide lipids for structure and energy. For instance, DENV recruits host enzymes, such as fatty acid synthase and the cholesterol synthesis enzyme 3-hydroxy-3-methyl-glutaryl-CoA reductase (HMGCR), to synthesize lipids at replication sites (*Heaton et al., 2010; Soto-Acosta et al., 2013; Soto-Acosta et al., 2017*). Specifically, DENV uses HMGCR to elevate cholesterol and increases its activity through impaired AMPK phosphorylation (*Soto-Acosta et al., 2017*). Flaviviruses also interact with host lipid droplets (LD), which are ER-derived organelles that store lipids for energy reserves and immunity. DENV increases the numbers of LDs in the cell and promotes their consumption by autophagy (*Samsa et al., 2009; Heaton and Randall, 2010; Peña and Harris, 2012*). They trigger LD consumption by interacting with the LD protein AUP1 to drive virus production (*Zhang et al., 2018*). Furthermore, these viruses use LDs for viral assembly. DENV capsid proteins colocalize to LDs, and their availability controls viral particle formation (*Samsa et al., 2009*). Collectively, these viruses have evolved a multitude of processes for acquiring necessary lipids from the mammalian host.

While not as abundantly studied as the flaviviruses, the alphaviruses display some reliance on host lipids. Similar to DENV, CHIKV requires intracellular cholesterol transport for replication and its non-structural proteins localize to LDs, although the significance of this interaction is unclear (*Wichit et al., 2017; Remenyi et al., 2017*). During SINV infection, mice defective in ASM accumulate intracellular lipids that promote a greater production of infectious particles (*Ng et al., 2008*). Because ASM is known to regulate cholesterol and sphingolipid levels, these may be implicated in their proliferation. Alphaviruses may also shift the metabolism of the cell to make lipids. It was shown that SFV uses the Akt pathway to drive glucose metabolism towards fatty acid synthesis

(Mazzon *et al.*, 2018). Thus, there may be uncovered mechanisms of lipid utilization by these arboviruses.

An emerging field of arbovirus research explores their interactions with the mosquito vector. Insects are cholesterol auxotrophs; therefore, mosquito-borne viruses must co-opt different processes to obtain lipids in the vector. To maintain intracellular cholesterol, DENV downregulates expression of the low-density lipoprotein receptor-related protein 1 (LRP-1), a protein involved in cholesterol export that facilitates viral replication in mosquitoes (Tree *et al.*, 2019). Interestingly, while the induction of DENV replication vesicles is conserved between mammals and mosquitoes, infected mosquito cells do not display convoluted ER membranes, possibly due to the lack of cholesterol synthesis (Junjhon *et al.*, 2014). Instead, flaviviruses alter the lipidome of *Aedes* mosquitoes by increasing phospholipid and sphingolipid synthesis, likely for their replication and membrane formation (Perera *et al.*, 2012; Melo *et al.*, 2016; Chotiwan *et al.*, 2018; Vial *et al.*, 2019). DENV accomplishes this by regulating expression of acylglycerolphosphate acyltransferase (AGPAT1), which increases phospholipid concentrations and promotes infectivity (Vial *et al.*, 2019). Finally, the interactions between arboviruses and LDs appear to be conserved, as both flaviviruses and alphaviruses induce their formation in mosquitoes (Barletta *et al.*, 2016). Mosquito LD biogenesis was shown to be a direct result of immune activation; however, whether these viruses require mosquito LDs is unclear (Barletta *et al.*, 2016).

Parasites

Apicomplexa

The Apicomplexa are a phylum of intracellular protozoans. These parasites are named after the presence of an apicoplast, a unique organelle that aids in parasite metabolism (Vaughan *et al.*, 2009). Two families of vector-borne apicomplexans are *Plasmodium* and *Babesia* spp., which are transmitted by mosquitoes and ticks, respectively.

Plasmodium spp. are the causative agents of malaria and undergo various stages in the human host. Mosquitoes deposit sporozoites in the skin, which migrate to the liver to infect hepatocytes and later erythrocytes in the bloodstream. The liver is a central regulator of lipid and fatty acid metabolism. During the liver stage, parasites require membrane phospholipids to undergo rapid replication (Table 1). *Plasmodium* scavenge PC directly from hepatocytes despite encoding enzymes for the type II fatty acid synthesis (FAS II) pathway and other lipid enzymes (Déchamps *et al.*, 2010; Itoe *et al.*, 2014). The prokaryotic FAS II pathway localizes to the apicoplast and appears to be involved in late liver stage development of *Plasmodium* spp. (Yu *et al.*, 2008; Vaughan *et al.*, 2009). Liver stage parasites also acquire host lipids by scavenging internalized and de novo synthesized cholesterol in hepatocytes, as well as promoting host lipid biosynthesis through the inhibition of the AMPK pathway (Labaied *et al.*, 2011; Kluck *et al.*, 2019).

Merozoites from the liver then progress to the bloodstream. During the blood stage, parasites synthesize their own phospholipids, as erythrocytes are unable to synthesize lipids de novo (Kilian *et al.*, 2018; Table 1). *Plasmodium* acquire lipid building blocks, such as fatty acids, choline, ethanolamine, and serine from the serum and hemoglobin of infected individuals (Mikkelsen *et al.*, 1988; Wein *et al.*, 2018; Tanaka *et al.*, 2019). These parasites then use the Kennedy and phosphatidylethanolamine methyltransferase (PMT) pathways of the host to generate phosphatidylethanolamine (PE) and PC, two of the predominant phospholipids found in blood-stage parasites (Ancelin and Vial, 1989; Pessi *et al.*, 2004). Interestingly, the parasite FAS II pathway does not appear to contribute to blood stage development (Yu *et al.*, 2008; Vaughan *et al.*, 2009).

Host lipid metabolism is tightly regulated during both the asexual and sexual blood stages. Lipidomic studies reveal an upregulation of lipids such triacylglycerol, diacylglycerol and PG in *P. falciparum*-infected erythrocytes (Gulati *et al.*, 2015). The shift from asexual to sexual blood stages is mediated by several factors, including the PMT pathway and regulation of lysophospholipid and fatty acid levels (Bobenchik *et al.*, 2013; Gulati *et al.*, 2015; Brancucci *et al.*, 2017; Tanaka *et al.*, 2019). For example, the host downregulates serum LPC levels as a physiological response to infection, which triggers *Plasmodium* gametocytogenesis (Brancucci *et al.*, 2017). The lipid composition of gametocytes also differs from other stages, including increased ceramides and sphingolipids, suggesting a shift in lipid metabolism during sexual differentiation (Gulati *et al.*, 2015).

Following the sexual stages, *Plasmodium* gametocytes are taken up by *Anopheles* mosquitoes and develop into oocysts. Proliferating oocysts acquire mosquito lipids through the uptake of the major lipid transporter lipophorin (Atella et al., 2009; Costa et al., 2018; Table 1). Recent studies have demonstrated the importance of lipophorin to parasite development, metabolic activity, and transmission. One study showed that the availability of lipophorin-transported lipids in the mosquito impacts parasite infectivity and virulence in the mammalian host (Costa et al., 2018). Furthermore, the restriction of these lipids affects the quantity and metabolic activity of transmitted sporozoites (Costa et al., 2018). A separate study revealed that steroid hormone signaling by 20-hydroxyecdysone (20E) positively regulates development of mosquito eggs and *Plasmodium* oocysts (Werling et al., 2019). When 20E signaling is disrupted, oocysts utilize lipids transported by lipophorin to accelerate parasite growth and become infectious sooner, remarkably without affecting the fitness of the mosquito (Werling et al., 2019). Given that 20E and other lipophorins have reported roles in antiplasmodial immunity, these studies exhibit an intricate relationship between lipid utilization by *Plasmodium* and vector competence (Gupta et al., 2010; Reynolds et al., 2020).

Babesia parasites infect several mammalian hosts and replicate in erythrocytes. Compared to *Plasmodium*, there is less known about *Babesia* pathogenesis. However, patients infected with *Babesia* display lipid abnormalities and markedly low HDL levels, suggesting these parasites depend on host lipid metabolism as well (Cunha et al., 2000; Bock et al., 2017; Table 1). Similar abnormalities have been observed in *Babesia*-infected cattle and canines (Goodger et al., 1990; Milanović et al., 2019). These parasites have been demonstrated to rewire lipid biosynthesis to produce PC during the blood stage, much like *Plasmodium* (Florin-Christensen et al., 2000). Similar to other tick-borne infections, their interactions with lipids in the tick remain unknown.

Trypanosomatida

T. cruzi and *Leishmania* spp. have intracellular stages in the mammalian host. Following transmission by its vector, *Leishmania* promastigotes infect macrophages and differentiate into obligate intracellular amastigotes within phagolysosomes (Loría-Cervera and Andrade-Narvaez, 2020). *T. cruzi* trypomastigotes also infect mammalian cells and develop into intracellular amastigotes; conversely, they replicate predominantly in the cytosol and can infect a variety of tissues, including muscle and adipose tissue (Lewis and Kelly, 2016). Trypanosomatids may synthesize many of their necessary lipids de novo, including fatty acids, sphingolipids, and phospholipids (Zhang and Beverley, 2010). However, their intracellular forms require lipid salvaging mechanisms (Table 1).

Trypanosomatids contain significant amounts of inositol phosphorylceramide (IPC), which is a sphingolipid common in fungi (Zhang and Beverley, 2010; Zhang et al., 2010). In *Leishmania* spp., the lipid rafts of these parasites are enriched in IPC and ergosterol, a substitute for mammalian cholesterol found in fungi and protozoa (Zhang and Beverley, 2010). Although promastigotes can synthesize IPC, differentiated amastigotes lose this ability but retain significant amounts of this lipid (Zhang et al., 2005). Studies demonstrate that after transitioning from promastigotes to amastigotes, *Leishmania* likely scavenge and remodel host lipids for parasite-specific molecules such as IPC (Winter et al., 1994; Henriques et al., 2003; Zhang et al., 2005). *Leishmania* amastigotes also exhibit changes in lipid composition compared to promastigotes, such as decreased levels of triglycerides and ergosterol and increased levels of fatty acids and cholesterol, suggesting a shift toward mammalian lipid scavenging (Bouazizi-Ben Messaoud et al., 2017).

Much like other intracellular pathogens, trypanosomatids obtain necessary lipids through the rewiring of host pathways. *Leishmania* and *T. cruzi* control intracellular lipid concentrations by elevating intracellular cholesterol and regulating expression of lipid metabolism genes (Osorio y Fortéa et al., 2009; Rabhi et al., 2012; Johndrow et al., 2014; Semini et al., 2017). *Leishmania* sequesters exogenous cholesterol in parasitophorous vacuoles before incorporating it into their own membranes (Tewary et al., 2006; Semini et al., 2017). To retain sequestered cholesterol, they route host V-ATPases to parasitophorous vacuoles and maintain cholesterol homeostasis (Pessoa et al., 2019). Additionally, although not well understood, both *Leishmania* and *T. cruzi* induce the formation of LDs in infected cells, suggesting a role in energy consumption (D'Ávila et al., 2011; Rabhi et al., 2016).

For *T. cruzi*, the ability to balance de novo lipid synthesis with host lipid scavenging is an active area of research. These parasites produce their own fatty acids and sterols and were shown to

upregulate enzymes involved in their synthesis during intracellular infection (*Li et al., 2016*). Regardless, intracellular growth of *T. cruzi* is tied to host lipids. Through a genome-wide RNAi screen, genes involved in host fatty acid oxidation were reported as being critical for the growth of *T. cruzi* amastigotes, thus linking host metabolism to parasite replication (*Caradonna et al., 2013*). Furthermore, amastigotes were shown to utilize long chain fatty acids from pools of host triacylglycerols in order to fuel their proliferation (*Gazos-Lopes et al., 2017*). Taken together, intracellular vector-borne pathogens draw on several different mechanisms to accomplish similar lipid scavenging tasks.

Immune evasion and disease severity

The mammalian and arthropod immune systems have evolved mechanisms to recognize and eliminate pathogens based on their microbial life cycles. Microbial survival and persistence in the host requires evasion of the immune system. Vector-transmitted pathogens have developed ways to subvert immunity through membrane lipids, host lipid metabolism, surface receptors, and lipid signaling (*Figure 4*). We will discuss how lipids help microbes evade host immune responses and how this contributes to disease severity.

Bacteria

The reliance of host lipids by arthropod-borne bacteria is both critical to pathogen survival and intertwined with evasion mechanisms. *Borrelia* spp. possess an arsenal of lipoproteins that aid in mammalian persistence (*Christodoulides et al., 2017*). *Borrelia* lipoproteins are immunogenic and must be tightly regulated by environmental cues, including temperature, CO₂ levels and immune pressure (*Brandt et al., 1990; Schwan et al., 1995; Liang et al., 2004; Hyde et al., 2007; Wilder et al., 2016*). *Borrelia* lipoproteins are known to undergo antigenic variation in mammalian hosts, specifically the variable major protein (VMP)-like sequence (Vls) E (*Zhang et al., 1997; Zhang and Norris, 1998*). This variation in VlsE is critical for reinfection with *Borrelia* and error-prone repair mechanisms during recombination contribute to this process (*Rogovskyy and Bankhead, 2013; Verhey et al., 2018*).

Borrelia lipoproteins can directly influence immune recognition and activation. Various surface lipoproteins derived from the *B. burgdorferi* sensu lato complex, including OspC, OspE, CRASP-1, CRASP-2, and BBK32 promote pathogen survival by binding or inactivating components of the complement pathways (*Hellwage et al., 2001; Kraiczy et al., 2001; von Lackum et al., 2005; Garcia et al., 2016; Caine et al., 2017; Figure 4A*). Similar mechanisms, such as the inactivation of factor H (FH) and FH-like protein 1 by CRASP-1, have been recently elucidated in *Borrelia mayonii*, an emerging Lyme disease agent (*Walter et al., 2019*). Although many of the complement evasion strategies identified in *Borrelia* are in vitro phenomena, the ability to inhibit complement may be critical for arthropod acquisition. For example, CRASP-1 mutants, which are unable to inhibit factor H, do not survive during blood meal and are unable to be transmitted to naive hosts (*Hart et al., 2018*). Furthermore, lipoproteins may display immunomodulatory effects against immune cells. OspB and OspC have been shown to inhibit phagocytosis by neutrophils and macrophages, respectively (*Hartiala et al., 2008; Carrasco et al., 2015*). OspA and OspB also have roles in modulating neutrophil oxidative bursts (*Hartiala et al., 2008*).

In addition to evasion, the relationship between tick-borne bacteria and host lipids can contribute to severe disease in humans. During an immune response, antibodies are produced to neutralize the microbes. The generation of antibodies to *Borrelia* lipids may contribute to severe pathologies during Lyme disease (*Figure 4A*). It was demonstrated that a significant portion of Lyme disease patients possess autoantibodies to apolipoprotein B-100 or annexin 2, which is a common determinant in the autoimmune disorder anti-phospholipid syndrome (*Crowley et al., 2015; Pianta et al., 2015*). Additionally, severe outcomes during Lyme disease may be associated with host metabolism. Patients with early disseminated Lyme disease have more pronounced metabolic signatures than those with early localized Lyme disease (*Fitzgerald et al., 2020*). One such metabolic signature is the differential production of eicosanoids that correlate with symptoms such as Lyme arthritis (*Blaho et al., 2009; Fitzgerald et al., 2020*). The shared requirement of cholesterol by *Borrelia* and *Anaplasma* spp. may influence their pathogenicity, as hypercholesterolemia and high-cholesterol diet were shown to promote *Borrelia* and *Anaplasma* infection, respectively (*Xiong et al., 2007*;

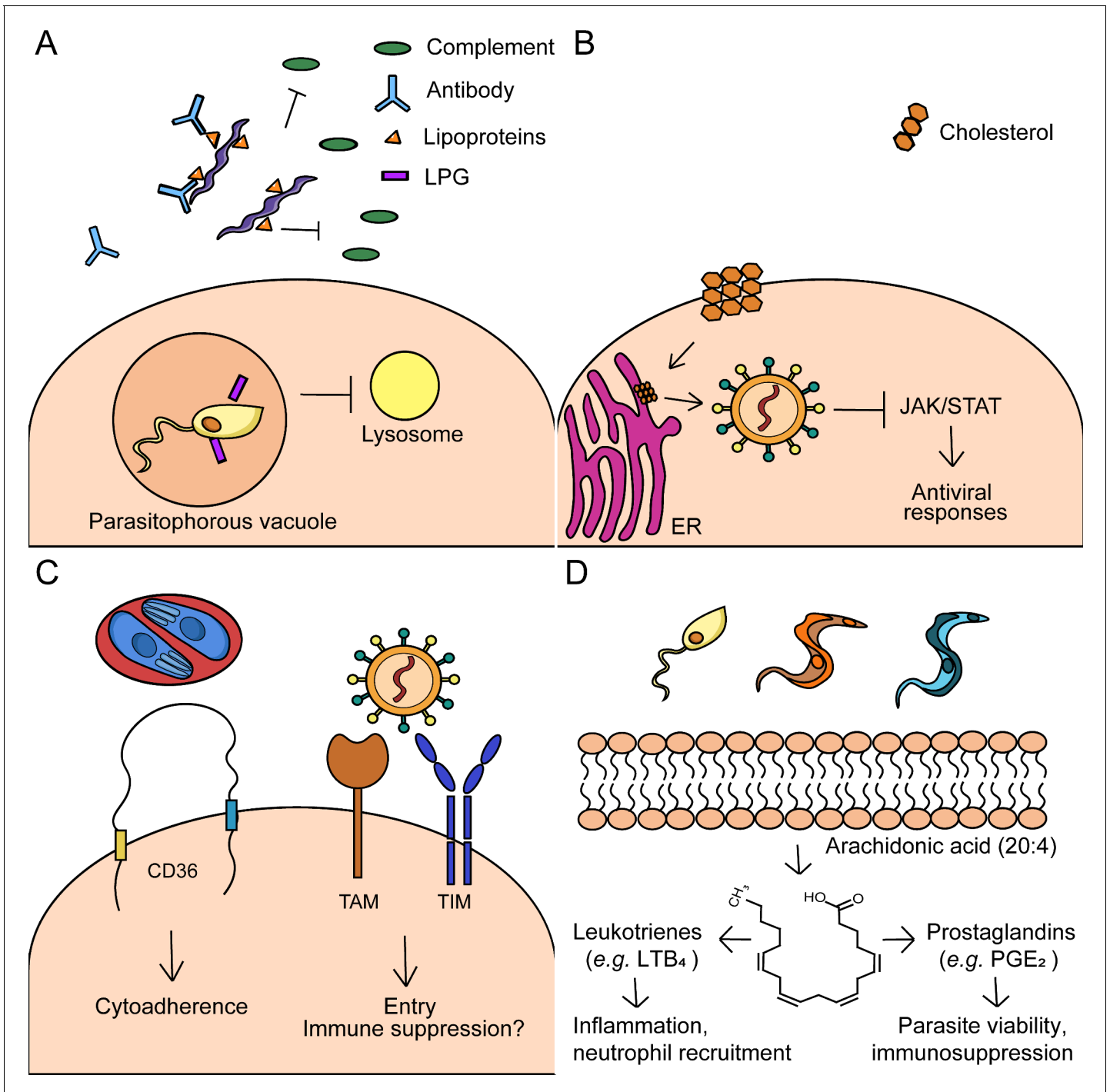


Figure 4. Immune evasion mechanisms by arthropod-borne pathogens. (A) *Microbial lipids*: *Borrelia* spp. use lipoproteins and other surface lipids to evade immunity and promote disease in humans. *Borrelia* possess various lipoproteins that inhibit the complement system in the blood. Additionally, antibodies are generated during *Borrelia* infection that promote anti-phospholipid syndrome, an autoimmune condition that targets phospholipids. *Leishmania* spp. contain the surface molecule lipophosphoglycan (LPG), which prevents the maturation of the phagosome. (B) *Host lipids and metabolism*: West Nile Virus (WNV) redistributes cholesterol from the plasma membrane to replication sites at the ER. This phenomenon disrupts lipid rafts, which downregulates JAK/STAT activation and antiviral responses. (C) *Surface lipid receptors*: Erythrocytes infected with *Plasmodium* engage the lipid receptor CD36. Infected erythrocytes bind CD36 on endothelial cells and promote cytoadherence, which may lead to severe complications (e.g. cerebral malaria). Flaviviruses and arboviruses have been shown to engage the phosphatidylserine (PS) receptors TIM and TAM. These receptors have known immunosuppressive functions. Engagement of TAM, specifically, has been shown to inhibit type I interferon signaling during infection with other enveloped viruses. (D) *Lipid signaling molecules*: Eicosanoids, such as prostaglandins and leukotrienes, are formed by the cleavage of arachidonic acid. Figure 4 continued on next page

Figure 4 continued

Eicosanoids may have immunomodulatory roles during trypanosomatid infections. Prostaglandin E₂ (PGE₂), for example, promotes parasite viability and may be immunosuppressive. Conversely, leukotriene B₄ (LTB₄) is proinflammatory and recruits neutrophils.

Toledo et al., 2015a). Therefore, it can be speculated that additional shared mechanisms involving host lipids may lead to severe outcomes in disease during tick-borne infections.

Viruses

The innate immune system promotes viral elimination through interferon signaling. Because arboviruses can expertly manipulate lipid metabolism, this can be used to thwart immunity. For example, the mammalian JAK/STAT pathway is activated by interferon and regulates antiviral responses and lipid metabolism (**Xu et al., 2013**). During WNV infection, cholesterol is redistributed from the plasma membrane to viral replication sites. This redistribution was demonstrated to disrupt lipid rafts and diminish JAK/STAT activation, which could then be restored by the addition of exogenous cholesterol (**Mackenzie et al., 2007; Figure 4B**). In the vector, the JAK/STAT pathway may also regulate lipid metabolism. Mosquitoes with constitutively active JAK/STAT signaling display resistance to DENV and downregulated expression of lipid metabolism genes, such as those involved in cholesterol transport (**Jupatanakul et al., 2017**). Therefore, it is conceivable that flaviviruses may use lipids to counteract these immune pathways in the mosquito. The interplay between cellular lipids and immune activation may also contribute to disease severity, as low LDL levels are associated with severe outcomes in patients infected with DENV (**Biswas et al., 2015**).

Arboviruses may mitigate immune responses prior to viral entry. The PS receptors TIM and TAM mediate both the removal of apoptotic cells and immunosuppressive responses (**Szondy et al., 2017**). Flaviviruses and alphaviruses have been shown to utilize TIM and TAM receptors for viral entry and TIM receptors for replication (**Meertens et al., 2012; Jemielity et al., 2013**). Notably, engagement of TAM receptors with enveloped viruses was shown to dampen innate immune responses by inhibiting type I interferon signaling (**Bhattacharyya et al., 2013; Figure 4C**). Thus, it is plausible that PS on flavivirus and alphavirus envelopes contributes to innate immune inactivation and evasion.

Parasites

Apicomplexa

Plasmodium spp. primarily use protein antigens to evade host immunity. However, these parasites utilize host lipid receptors to invade other tissues and promote disease severity. One of the most defined mechanisms of host-*Plasmodium* interaction is with CD36, an evolutionarily conserved lipid scavenger receptor and transporter (**Hsieh et al., 2016**). CD36 contributes to apoptotic cell clearance, pathogen recognition and uptake of host lipids, including the potentially harmful form of cholesterol, oxidized LDL (oxLDL) (**Febbraio et al., 2001**). During *Plasmodium* infection, oxLDL is responsible for the phagocytosis of infected red blood cells (iRBCs), regulation of inflammatory responses and induction of cellular immunity by phagocytic immune cells (**Serghides and Kain, 2001; Gowda et al., 2013; Thylur et al., 2017**). However, CD36 has been implicated as a determinant of severe malarial infection (**Figure 4C**). Endothelial CD36 binds domains of the *Plasmodium falciparum* erythrocyte membrane protein 1 (PfEMP1) with high affinity, tethering iRBCs to the endothelium in a phenomenon called cytoadherence (**Barnwell et al., 1989; Hsieh et al., 2016**). Sequestration of iRBCs to the endothelium promotes parasite survival, potentially by preventing splenic clearance, and is tied to severe pathologies such as cerebral malaria (**Fonager et al., 2012**). In the mosquito vector, the CD36 ortholog Croquemort may also be involved in parasite recognition although this relationship is not explicitly defined (**González-Lázaro et al., 2009**).

In terms of disease severity, lipidomics has been used to distinguish clinical manifestations of malaria, including acute and chronic disease (**Cordy et al., 2019**). Susceptibility to severe malaria is correlated with decreased levels of eicosanoids, such as prostaglandin E₂ (PGE₂) in both *P. falciparum*- and *P. vivax*-infected patients (**Perkins et al., 2001; Abreu-Filho et al., 2019**). Studies from *P. vivax*-infected patients also reveal that parasitemia is significantly associated with metabolites involved in lipid metabolism, an observation that may be tied to their intracellular growth

(Gardinassi et al., 2017). Conversely, in a study observing factors associated with pre-existing *P. vivax* immunity, semi-immune subjects exhibit increased levels of linoleate metabolites compared to naive subjects (Gardinassi et al., 2018). The ability of an infected individual to respond to malaria treatment may also be tied to host lipids, where patients with lower levels of baseline glycerophosphocholines were more likely to develop chloroquine-resistant malaria after infection (Uppal et al., 2017). Together, the relationship between clinical presentation and host lipidomics allows for the use of lipid biomarkers in patients with malaria.

Trypanosomatida

Trypanosomatids use membrane components and parasite lipids to evade the immune response. *Leishmania* promastigotes contain lipophosphoglycan (LPG), a critical virulence factor and lipid-containing polysaccharide (Späth et al., 2003). LPG has been well characterized for its role in inhibiting phagosome maturation and establishing infection in macrophages (Desjardins and Descoteaux, 1997; Moradin and Descoteaux, 2012; Figure 4A). In the vector, LPG facilitates arthropod colonization. This membrane component is critical for midgut attachment and protection from hydrolytic enzymes in the sand fly (Sacks et al., 2000; Kamhawi et al., 2004; Kamhawi, 2006; Myskova et al., 2007; Jecna et al., 2013). Other lipids have been implicated in *Leishmania* immune evasion as well. For example, infective parasites express higher levels of polyunsaturated fatty acid metabolites and may promote the differentiation of macrophages into a less inflammatory phenotype, known as the M2 phenotype (Paloque et al., 2019). These M2 macrophages produce high levels of pro-resolving bioactive lipids to facilitate parasite survival and proliferation (Paloque et al., 2019). For *T. cruzi*, these parasites possess membrane lipids that may be involved in the induction of severe disease. It was demonstrated that *T. cruzi* glycolipids activate a specific $\gamma\delta$ -T cell population associated with cardiomyopathy, a severe outcome of Chagas disease (Passos et al., 2017).

Within the host cell, regulation of host cholesterol is critical for intracellular trypanosomatid survival. Paradoxically, cholesterol appears to have a protective effect against *Leishmania* and *T. cruzi* infections. *Leishmania* survival outside of the parasitophorous vacuole depends on lower cholesterol. For example, mice and patients infected with *Leishmania* exhibit decreased levels of serum cholesterol, which may be a result of downregulated microRNA expression by the parasite (Lal et al., 2007; Ghosh et al., 2013). This dependence on lower cholesterol extends to the plasma membrane, where reduced membrane cholesterol disrupts membrane lipid rafts and inhibits antigen presentation to T cells (Chakraborty et al., 2005). Additional studies have shown that hypocholesterolemia promotes host susceptibility to *Leishmania*, while the converse protects against infection (Ghosh et al., 2012; Ghosh et al., 2013; Ghosh et al., 2014). Similarly, cholesterol may be somewhat protective against severe *T. cruzi* infection, as mice fed a high fat diet had increased survival and less myocardial damage despite increased cardiac cholesterol levels (Nagajyothi et al., 2014). This was attributed to the 'obesity paradox', where obesity has been observed as having a positive effect on certain chronic disease outcomes (Nagajyothi et al., 2014).

Another shared mode of evasion and disease severity by these parasites is the differential expression of eicosanoids. Specifically, prostaglandins appear to promote immunosuppression and pathogenesis (Figure 4D). During *Leishmania* infection, PGE₂ and prostaglandin F₂ α (PGF₂ α) were shown to be upregulated and enhance parasite viability (Araújo-Santos et al., 2014; França-Costa et al., 2015; Alves-Ferreira et al., 2020). PGE₂ has an immunosuppressive effect during *T. cruzi* infection and can be derived from host or parasite LDs (Toledo et al., 2016; Lovo-Martins et al., 2018; de Almeida et al., 2018). Although less understood, this eicosanoid may be somewhat involved in *T. brucei* immunosuppression as well. *T. brucei* infection induces the generation of suppressor macrophages that inhibit T cell proliferation, a hallmark of African trypanosomiasis (Schleifer and Mansfield, 1993). The suppressive activities of these macrophages are partially mediated by PGE₂, where it was shown that the inhibition of NO and prostaglandin synthesis together abrogates T cell suppression (Schleifer and Mansfield, 1993). Along with the host, *T. brucei* may produce PGE₂ and PGF₂ α , although their functional significance is unclear (Kubata et al., 2000). Furthermore, PGE₂ may contribute to clinical complications. The prostaglandin synthesis enzyme COX-2 and PGE₂ signaling were shown to be important for cardiac inflammation during Chagas disease (Guerrero et al., 2015). The role of this eicosanoid in cardiomyopathy is controversial, however, as conflicting reports show that PGE₂ may also be cardioprotective (Sharma et al., 2013).

The differential production of eicosanoids directly affects the capacity of the host to control trypanosomatid infection. Leishmaniasis manifests in several different types, including the milder presentation of localized cutaneous leishmaniasis and the more severe mucocutaneous leishmaniasis. Patients with mucocutaneous leishmaniasis display higher levels of leukotriene B₄ (LTB₄), a proinflammatory eicosanoid that recruits neutrophils, and decreased PGE₂ compared to patients with localized cutaneous leishmaniasis, suggesting this enhanced inflammatory profile contributes to severe *Leishmania* (França-Costa et al., 2016). Whether LTB₄ is produced for the benefit of the parasite or host is debatable. LTB₄ has been shown to be critical for parasite killing by neutrophils and macrophages (Morato et al., 2014; Tavares et al., 2014). However, as *Leishmania* may infect neutrophils before being ingested by macrophages, it has been suggested that these parasites use LTB₄ to recruit additional cells to the site of infection. *L. major* induces LTB₄ during early neutrophil infection in a manner similar to *A. phagocytophilum*, which has a tropism for neutrophils (Plagge and Laskay, 2017). Thus, this could be a mechanism to promote early persistence of the pathogen.

In the insect vector, *Trypanosoma* have adopted additional strategies for evasion and transmission. *Trypanosoma rangeli*, another species native to Central and South America, shares many characteristics with *T. cruzi* but infects the insect salivary glands for transmission. To accomplish this, *T. rangeli* uses its surface glycolipids to subvert nitric oxide (NO) production in the salivary glands and persist in the vector (Gazos-Lopes et al., 2012). *Trypanosoma* parasites may also use lipids to promote successful transmission. *T. cruzi* parasites bind lipoproteins from the vertebrate blood meal on their surface, thus agglutinating parasites and enhancing infectivity in the insect vector (Moreira et al., 2018). These parasites may benefit from the immunosuppressive properties of arthropod-derived lipids, where LPC in the salivary glands of *Triatoma infestans* and *Rhodnius prolixus* was shown to enhance *T. cruzi* transmission by altering the local inflammatory environment at the bite site (Mesquita et al., 2008; Lima et al., 2018). Ultimately, the interactions between parasites, hosts, and lipids are critical for the establishment and dissemination of arthropod-borne infections.

Conclusion and perspective

Recent advances in the field of metabolism have allowed for a deeper understanding of host-pathogen interactions. Because of their increasing global health significance, research about vector-borne pathogens has experienced a surging interest from the scientific community. Great strides have been made in investigating otherwise neglected tropical diseases, including *Trypanosoma* and *Leishmania*. Additional work in understudied microbes, such as *Babesia*, alphaviruses, and POWV, among others, is imperative for understanding shared mechanisms used by vector-borne pathogens. Using these microbes to study the molecular basis of infection could unlock new paradigms in microbiology.

The regulation of lipids is a crucial process in both mammalian and arthropod metabolism, and arthropod-borne pathogens have evolved mechanisms to co-opt these processes. For example, only seven bacterial genera are known to incorporate mammalian cholesterol in their membranes, including the tick-borne *Borrelia*, *Anaplasma*, and *Ehrlichia* (Toledo and Benach, 2015). Based on their shared environment, it is easy to speculate why tick-borne bacteria are overrepresented for this quality. Other discoveries have prompted the development of novel therapeutics for vector-borne diseases. For instance, both extracellular and intracellular arthropod-borne pathogens must salvage lipids from their hosts for survival (Table 2). To this end, drugs targeting lipid metabolism have been shown to inhibit arboviral and parasitic infections (Tewary et al., 2006; Bobenchik et al., 2013; Merino-Ramos et al., 2016; Choi et al., 2016; Jiménez de Oya et al., 2019). Thus, their use in humans is a promising area of research. Studying host lipid requirements by these pathogens can also aid in understanding host susceptibilities to infection, such as comorbidities and medications taken for other diseases.

The interactions between microbes and their arthropod vectors have also come to the forefront of vector biology research. Molecular strategies of vector competence, or the ability of an arthropod vector to efficiently transmit disease, are currently being defined in insect and non-insect arthropods. These include: (1) pathogen recognition by diverse arthropod immune systems, (2) secretion of salivary effector proteins, (3) survival advantages provided by colonized microbes, and (4) interactions with mammalian immunity and the microbiome at the bite site. This emerging area of research is

Table 2. Requirement of lipid scavenging for microbial growth.

	Cholesterol	Fatty acids	Phospholipids	Sphingolipids
<i>Anaplasma</i> and <i>Ehrlichia</i>	Essential (<i>Lin and Rikihisa, 2003a; Xiong et al., 2009; Cockburn et al., 2019</i>)	Essential (<i>Dunning Hotopp et al., 2006</i>)	Essential (<i>Lin et al., 2020</i>)	Unknown
<i>Borrelia</i>	Essential (<i>LaRocca et al., 2010; Crowley et al., 2013; Toledo et al., 2015a</i>)	Essential (<i>Belisle et al., 1994; Fraser et al., 1997; Hossain et al., 2001</i>)	Non-essential (<i>Hossain et al., 2001; Wang et al., 2004</i>)	Unknown
Flaviruses	Essential (<i>Rothwell et al., 2009; Soto-Acosta et al., 2013</i>)	Essential (<i>Heaton et al., 2010</i>)	Essential (<i>Vial et al., 2019</i>)	Essential (<i>Martín-Acebes et al., 2014; Leier et al., 2020</i>)
<i>Plasmodium</i>	Unclear (<i>Labaied et al., 2011</i>)	Essential (mammal: blood) (<i>Yu et al., 2008; Vaughan et al., 2009</i>)	Essential (mammal: liver) (<i>Déchamps et al., 2010; Itoe et al., 2014</i>)	Non-essential (<i>Zhang et al., 2010</i>)
<i>Leishmania</i>	Essential (mammal) (<i>Andrade-Neto et al., 2011; De Cicco et al., 2012; Rabhi et al., 2012; Semini et al., 2017</i>)	Unknown	Essential (mammal) (<i>Zhang and Beverley, 2010</i>)	Essential (mammal) (<i>Winter et al., 1994; Henriques et al., 2003; Zhang et al., 2005; Zhang and Beverley, 2010</i>)
<i>T. brucei</i>	Essential (mammal) (<i>Coppens et al., 1995</i>)	Non-essential (<i>Millerioux et al., 2018; Ray et al., 2018</i>)	Non-essential (<i>Ramakrishnan et al., 2013</i>)	Non-essential (<i>Zhang et al., 2010</i>)
<i>T. cruzi</i>	Essential (mammal) (<i>Johndrow et al., 2014</i>)	Essential (mammal and vector) (<i>Wainszelbaum et al., 2003; Caradonna et al., 2013; Li et al., 2016; Gazos-Lopes et al., 2017</i>)	Non-essential (vector) (<i>Ramakrishnan et al., 2013; Chagas-Lima et al., 2019</i>)	Non-essential (<i>Zhang et al., 2010</i>)

critical for understanding why arthropod vectors are tolerant of certain human pathogens and how these interactions developed on an evolutionary scale.

Vector-borne microbes are required to adapt to the mammalian host and the arthropod environment. However, most microbes considered ‘human pathogens’ are not detrimental to the arthropod, which is a phenomenon that is not well understood. For example, lipid utilization by microbes does not appear to impair arthropod fitness, yet lipid dysregulation is often a symptom of severe disease in mammals (*Ghosh et al., 2012; Biswas et al., 2015; Toledo et al., 2015a; Costa et al., 2018; Werling et al., 2019; Cordy et al., 2019; Fitzgerald et al., 2020*). This observation is intriguing, considering the general lipid compositions of invertebrate vectors and mammalian hosts are fairly similar. They both store excess lipids in the form of triacylglycerols and intracellular lipid droplets, they synthesize fatty acids and phospholipids for cellular membranes, and hematophagous arthropods acquire mammalian lipids (e.g. cholesterol) during blood meal and incorporate them in their cellular processes (*Arrese and Soulages, 2010; Tree et al., 2019*). Although many of these processes are conserved across species, the role of metabolism in dual host adaptation remains to be defined. Perhaps, the metabolic requirements for the microbe differ in each environment or the arthropod vector supplies necessary metabolites that prevent pathogenesis. During DENV infection, for instance, mosquito cells produce a significant number of unidentified metabolites that may represent unannotated, mosquito-specific molecules (*Chotiwan et al., 2018*). A high-resolution comparison of human and arthropod metabolites under infection conditions, as well as a larger focus on understudied vectors (e.g. sand flies, tsetse flies, triatomines) may help answer these questions.

The emergence of new and systems-based technologies offers an exciting outlook for the fields of vector biology and microbiology. For example, metabolomics is a high-throughput technique that provides a full picture of cellular perturbations underlying disease processes. By studying levels of metabolites, researchers can interrogate thousands of molecular changes including those involved in lipid metabolism. Lipidomics has already been applied for several vector-borne pathogens and has been instrumental in understanding host-pathogen interactions (*Blaho et al., 2009; Perera et al., 2012; Cui et al., 2013; Gulati et al., 2015; Gardinassi et al., 2017; Gazos-Lopes et al., 2017; Melo et al., 2016; Melo et al., 2017; Chotiwan et al., 2018; Cordy et al., 2019; Vial et al., 2019; Leier et al., 2020*); however, its further implementation with hypothesis-driven research may uncover universal mechanisms shared by several microbes. Additionally, the rise of cutting-edge technologies, such as single-cell metabolomics and mass spectrometry imaging, allows researchers to take a

systems biology approach to answering metabolic questions. Mass spectrometry imaging reveals spatial distribution of individual metabolites, such as lipids, which can be applied to individual tissues from mammals or arthropods. Single-cell metabolomics can provide insight into the heterogeneity of infection and how individual cells respond to infection. Thus, a more holistic understanding of lipid hijacking by vector-borne diseases is on the horizon.

Collectively, we aimed to shed light on the unifying principle of lipid utilization in vector-borne diseases. Research in this field is essential for our understanding of mammalian pathogenesis and disease transmission by arthropods. We hope that continuing research in arthropod biology and understudied microbes will provide a greater understanding of host-vector-pathogen interactions.

Acknowledgements

We thank the Pedra laboratory for insightful discussions. This work was supported by grants from the National Institutes of Health (NIH) to AJO (F31AI152215) and JHFP (R01AI134696, R01AI116523, R01AI049424 and P01AI138949). The content is solely the responsibility of the authors and does not necessarily represent the official views of the NIH, the Department of Health and Human Services or the United States government.

Additional information

Funding

Funder	Grant reference number	Author
National Institutes of Health	F31AI152215	Anya J O'Neal
National Institutes of Health	R01AI134696	Joao HF Pedra
National Institutes of Health	R01AI116523	Joao HF Pedra
National Institutes of Health	R01AI049424	Joao HF Pedra
National Institutes of Health	P01AI138949	Joao HF Pedra

The funders had no role in study design, data collection and interpretation, or the decision to submit the work for publication.

Author ORCIDs

Anya J O'Neal  <https://orcid.org/0000-0001-5188-1344>

Agustin Rolandelli  <http://orcid.org/0000-0003-1059-3578>

Joao HF Pedra  <https://orcid.org/0000-0001-8740-2667>

References

- Abreu-Filho PG**, Tarragô AM, Costa AG, Monteiro WM, Meilles AFG, Costa TCC, Silva JS, Zambuzi FA, Gardinassi LG, Moraes LAB, Lacerda MVG, Sorgi CA, Faccioli LH, Malheiro A. 2019. Plasma eicosanoid profile in *Plasmodium vivax* Malaria: Clinical Analysis and Impacts of Self-Medication. *Frontiers in Immunology* **10**: 2141. DOI: <https://doi.org/10.3389/fimmu.2019.02141>, PMID: 31620120
- Alves-Ferreira EVC**, Ferreira TR, Walrad P, Kaye PM, Cruz AK. 2020. *Leishmania braziliensis* prostaglandin F_{2α} synthase impacts host infection. *Parasites & Vectors* **13**:1–11. DOI: <https://doi.org/10.1186/s13071-020-3883-z>, PMID: 31915065
- Ancelin ML**, Vial HJ. 1989. Regulation of phosphatidylcholine biosynthesis in *Plasmodium*-infected erythrocytes. *Biochimica Et Biophysica Acta (BBA) - Lipids and Lipid Metabolism* **1001**:82–89. DOI: [https://doi.org/10.1016/0005-2760\(89\)90310-X](https://doi.org/10.1016/0005-2760(89)90310-X)
- Andrade-Neto VV**, Cicco NN, Cunha-Junior EF, Canto-Cavalheiro MM, Atella GC, Torres-Santos EC. 2011. The pharmacological inhibition of sterol biosynthesis in *leishmania* is counteracted by enhancement of LDL endocytosis. *Acta Tropica* **119**:194–198. DOI: <https://doi.org/10.1016/j.actatropica.2011.05.001>, PMID: 21601554
- Araújo-Santos T**, Prates DB, França-Costa J, Luz NF, Andrade BB, Miranda JC, Brodskyn CI, Barral A, Bozza PT, Borges VM. 2014. Prostaglandin E2/Leukotriene B4 balance induced by *lutzomyia longipalpis* saliva favors *Leishmania infantum* infection. *Parasites & Vectors* **7**:601. DOI: <https://doi.org/10.1186/s13071-014-0601-8>, PMID: 25526785

- Arrese EL**, Soulages JL. 2010. Insect fat body: energy, metabolism, and regulation. *Annual Review of Entomology* **55**:207–225. DOI: <https://doi.org/10.1146/annurev-ento-112408-085356>, PMID: 19725772
- Atella GC**, Bittencourt-Cunha PR, Nunes RD, Shahabuddin M, Silva-Neto MA. 2009. The major insect lipoprotein is a lipid source to mosquito stages of malaria parasite. *Acta Tropica* **109**:159–162. DOI: <https://doi.org/10.1016/j.actatropica.2008.10.004>, PMID: 19013123
- Atkins GJ**. 2013. The pathogenesis of alphaviruses. *ISRN Virology* **2013**:1–22. DOI: <https://doi.org/10.5402/2013/861912>
- Barletta AB**, Alves LR, Silva MC, Sim S, Dimopoulos G, Liechocki S, Maya-Monteiro CM, Sorgine MH. 2016. Emerging role of lipid droplets in *aedes aegypti* immune response against Bacteria and dengue virus. *Scientific Reports* **6**:19928. DOI: <https://doi.org/10.1038/srep19928>, PMID: 26887863
- Barnwell JW**, Asch AS, Nachman RL, Yamaya M, Aikawa M, Ingravallo P. 1989. A human 88-kD membrane glycoprotein (CD36) functions in vitro as a receptor for a cytoadherence ligand on *Plasmodium falciparum*-infected erythrocytes. *Journal of Clinical Investigation* **84**:765–772. DOI: <https://doi.org/10.1172/JCI114234>, PMID: 2474574
- Barrias ES**, Dutra JM, De Souza W, Carvalho TM. 2007. Participation of macrophage membrane rafts in *Trypanosoma cruzi* invasion process. *Biochemical and Biophysical Research Communications* **363**:828–834. DOI: <https://doi.org/10.1016/j.bbrc.2007.09.068>, PMID: 17904520
- Belisle JT**, Brandt ME, Radolf JD, Norgard MV. 1994. Fatty acids of *Treponema pallidum* and *Borrelia burgdorferi* lipoproteins. *Journal of Bacteriology* **176**:2151–2157. DOI: <https://doi.org/10.1128/JB.176.8.2151-2157.1994>, PMID: 8157583
- Berman JD**, Gallalee JV, Best JM, Hill T. 1987. Uptake, distribution, and oxidation of fatty acids by *leishmania Mexicana* amastigotes. *The Journal of Parasitology* **73**:555. DOI: <https://doi.org/10.2307/3282136>, PMID: 3037056
- Bhattacharyya S**, Zagórska A, Lew ED, Shrestha B, Rothlin CV, Naughton J, Diamond MS, Lemke G, Young JA. 2013. Enveloped viruses disable innate immune responses in dendritic cells by direct activation of TAM receptors. *Cell Host & Microbe* **14**:136–147. DOI: <https://doi.org/10.1016/j.chom.2013.07.005>, PMID: 23954153
- Biswas HH**, Gordon A, Nuñez A, Perez MA, Balmaseda A, Harris E. 2015. Lower Low-Density lipoprotein cholesterol levels are associated with severe dengue outcome. *PLOS Neglected Tropical Diseases* **9**:e0003904. DOI: <https://doi.org/10.1371/journal.pntd.0003904>, PMID: 26334914
- Blaho VA**, Buczynski MW, Brown CR, Dennis EA. 2009. Lipidomic analysis of dynamic eicosanoid responses during the induction and resolution of lyme arthritis. *Journal of Biological Chemistry* **284**:21599–21612. DOI: <https://doi.org/10.1074/jbc.M109.003822>, PMID: 19487688
- Bobenchik AM**, Witola WH, Augagneur Y, Nic Lochlainn L, Garg A, Pachikara N, Choi JY, Zhao YO, Usmani-Brown S, Lee A, Adjalley SH, Samanta S, Fidock DA, Voelker DR, Fikrig E, Ben Mamoun C. 2013. *Plasmodium falciparum* phosphoethanolamine methyltransferase is essential for malaria transmission. *PNAS* **110**:18262–18267. DOI: <https://doi.org/10.1073/pnas.1313965110>, PMID: 24145416
- Bock JL**, Senzel L, Spitzer ED, Bifulco W. 2017. Undetectable HDL cholesterol in a patient with Flu-Like illness. *Clinical Chemistry* **63**:642–644. DOI: <https://doi.org/10.1373/clinchem.2016.258616>, PMID: 28242831
- Bouazizi-Ben Messaoud H**, Guichard M, Lawton P, Delton I, Azzouz-Maache S. 2017. Changes in lipid and fatty acid composition during intramacrophagic transformation of *leishmania donovani* complex promastigotes into amastigotes. *Lipids* **52**:433–441. DOI: <https://doi.org/10.1007/s11745-017-4233-6>, PMID: 28161835
- Bowes AE**, Samad AH, Jiang P, Weaver B, Mellors A. 1993. The acquisition of lysophosphatidylcholine by African trypanosomes. *The Journal of Biological Chemistry* **268**:13885–13892. PMID: 8314756
- Brancucci NMB**, Gerdt JP, Wang C, De Niz M, Philip N, Adapa SR, Zhang M, Hitz E, Niederwieser I, Boltryk SD, Laffitte MC, Clark MA, Grüning C, Ravel D, Blancke Soares A, Demas A, Bopp S, Rubio-Ruiz B, Conejo-Garcia A, Wirth DF, et al. 2017. Lysophosphatidylcholine regulates sexual stage differentiation in the human malaria parasite *Plasmodium falciparum*. *Cell* **171**:1532–1544. DOI: <https://doi.org/10.1016/j.cell.2017.10.020>, PMID: 29129376
- Brandt ME**, Riley BS, Radolf JD, Norgard MV. 1990. Immunogenic integral membrane proteins of *Borrelia burgdorferi* are lipoproteins. *Infection and Immunity* **58**:983–991. DOI: <https://doi.org/10.1128/IAI.58.4.983-991.1990>, PMID: 2318538
- Caine JA**, Lin Y-P, Kessler JR, Sato H, Leong JM, Coburn J. 2017. *Borrelia burgdorferi* outer surface protein C (OspC) binds complement component C4b and confers bloodstream survival. *Cellular Microbiology* **19**:e12786. DOI: <https://doi.org/10.1111/cmi.12786>
- Caradonna KL**, Engel JC, Jacobi D, Lee CH, Burleigh BA. 2013. Host metabolism regulates intracellular growth of *Trypanosoma cruzi*. *Cell Host & Microbe* **13**:108–117. DOI: <https://doi.org/10.1016/j.chom.2012.11.011>, PMID: 23332160
- Carrasco SE**, Troxell B, Yang Y, Brandt SL, Li H, Sandusky GE, Condon KW, Serezani CH, Yang XF. 2015. Outer surface protein OspC is an antiphagocytic factor that protects *Borrelia burgdorferi* from phagocytosis by macrophages. *Infection and Immunity* **83**:4848–4860. DOI: <https://doi.org/10.1128/IAI.01215-15>, PMID: 26438793
- Chagas-Lima AC**, Pereira MG, Fampa P, Lima MS, Kluck GEG, Atella GC. 2019. Bioactive lipids regulate *Trypanosoma cruzi* development. *Parasitology Research* **118**:2609–2619. DOI: <https://doi.org/10.1007/s00436-019-06331-9>, PMID: 31267245

- Chakraborty D**, Banerjee S, Sen A, Banerjee KK, Das P, Roy S. 2005. *Leishmania donovani* affects antigen presentation of macrophage by disrupting lipid rafts. *The Journal of Immunology* **175**:3214–3224. DOI: <https://doi.org/10.4049/jimmunol.175.5.3214>, PMID: 16116212
- Choi JY**, Kumar V, Pachikara N, Garg A, Lawres L, Toh JY, Voelker DR, Ben Mamoun C. 2016. Characterization of *Plasmodium* phosphatidylserine decarboxylase expressed in yeast and application for inhibitor screening. *Molecular Microbiology* **99**:999–1014. DOI: <https://doi.org/10.1111/mmi.13280>, PMID: 26585333
- Chotiwat N**, Andre BG, Sanchez-Vargas I, Islam MN, Grabowski JM, Hopf-Jannasch A, Gough E, Nakayasu E, Blair CD, Belisle JT, Hill CA, Kuhn RJ, Perera R. 2018. Dynamic remodeling of lipids coincides with dengue virus replication in the midgut of *aedes aegypti* mosquitoes. *PLOS Pathogens* **14**:e1006853. DOI: <https://doi.org/10.1371/journal.ppat.1006853>, PMID: 29447265
- Christodoulides A**, Boyadjian A, Kelesidis T. 2017. Spirochetal lipoproteins and immune evasion. *Frontiers in Immunology* **8**:364. DOI: <https://doi.org/10.3389/fimmu.2017.00364>, PMID: 28424696
- Cockburn CL**, Green RS, Damle SR, Martin RK, Ghahrai NN, Colonne PM, Fullerton MS, Conrad DH, Chalfant CE, Voth DE, Rucks EA, Gilk SD, Carlyon JA. 2019. Functional inhibition of acid sphingomyelinase disrupts infection by intracellular bacterial pathogens. *Life Science Alliance* **2**:e201800292. DOI: <https://doi.org/10.26508/lsa.201800292>, PMID: 30902833
- Coppens I**, Levade T, Courtoy PJ. 1995. Host plasma low density lipoprotein particles as an essential source of lipids for the bloodstream forms of *Trypanosoma brucei*. *Journal of Biological Chemistry* **270**:5736–5741. DOI: <https://doi.org/10.1074/jbc.270.11.5736>, PMID: 7890701
- Cordy RJ**, Patrapuvich R, Lili LN, Cabrera-Mora M, Chien J-T, Tharp GK, Khadka M, Meyer EVS, Lapp SA, Joyner CJ, Garcia A, Banton S, Tran V, Luvira V, Rungin S, Saeseu T, Rachaphaew N, Pakala SB, DeBarry JD, Kissinger JC, et al. 2019. Distinct amino acid and lipid perturbations characterize acute versus chronic malaria. *JCI Insight* **4**:e125156. DOI: <https://doi.org/10.1172/jci.insight.125156>, PMID: 31045574
- Cortese M**, Goellner S, Acosta EG, Neufeldt CJ, Oleksiuk O, Lampe M, Haselmann U, Funaya C, Schieber N, Ronchi P, Schorb M, Pruunsild P, Schwab Y, Chatel-Chaix L, Ruggieri A, Bartenschlager R. 2017. Ultrastructural characterization of zika virus replication factories. *Cell Reports* **18**:2113–2123. DOI: <https://doi.org/10.1016/j.celrep.2017.02.014>, PMID: 28249158
- Costa G**, Gildenhard M, Eldering M, Lindquist RL, Hauser AE, Sauerwein R, Goosmann C, Brinkmann V, Carrillo-Bustamante P, Levashina EA. 2018. Non-competitive resource exploitation within mosquito shapes within-host malaria infectivity and virulence. *Nature Communications* **9**:3474. DOI: <https://doi.org/10.1038/s41467-018-05893-z>, PMID: 30150763
- Crowley JT**, Toledo AM, LaRocca TJ, Coleman JL, London E, Benach JL. 2013. Lipid exchange between *Borrelia burgdorferi* and host cells. *PLOS Pathogens* **9**:e1003109. DOI: <https://doi.org/10.1371/journal.ppat.1003109>, PMID: 23326230
- Crowley JT**, Drouin EE, Pianta A, Strle K, Wang Q, Costello CE, Steere AC. 2015. A highly expressed human protein, apolipoprotein B-100, serves as an autoantigen in a subgroup of patients with lyme disease. *Journal of Infectious Diseases* **212**:1841–1850. DOI: <https://doi.org/10.1093/infdis/jiv310>, PMID: 26014802
- Cui L**, Lee YH, Kumar Y, Xu F, Lu K, Ooi EE, Tannenbaum SR, Ong CN. 2013. Serum metabolome and lipidome changes in adult patients with primary dengue infection. *PLOS Neglected Tropical Diseases* **7**:e2373. DOI: <https://doi.org/10.1371/journal.pntd.0002373>, PMID: 23967362
- Cunha BA**, Crean J, Rosenbaum G. 2000. Lipid abnormalities in babesiosis. *The American Journal of Medicine* **108**:758–759. DOI: [https://doi.org/10.1016/S0002-9343\(00\)00423-X](https://doi.org/10.1016/S0002-9343(00)00423-X), PMID: 10946820
- D'Avila H**, Freire-de-Lima CG, Roque NR, Teixeira L, Barja-Fidalgo C, Silva AR, Melo RC, Dosreis GA, Castro-Faria-Neto HC, Bozza PT. 2011. Host cell lipid bodies triggered by *Trypanosoma cruzi* infection and enhanced by the uptake of apoptotic cells are associated with prostaglandin E₂ generation and increased parasite growth. *The Journal of Infectious Diseases* **204**:951–961. DOI: <https://doi.org/10.1093/infdis/jir432>, PMID: 21849292
- de Almeida PE**, Toledo DAM, Rodrigues GSC, D'Avila H. 2018. Lipid bodies as sites of prostaglandin E₂ synthesis during Chagas disease: impact in the parasite escape mechanism. *Frontiers in Microbiology* **9**:499. DOI: <https://doi.org/10.3389/fmicb.2018.00499>, PMID: 29616011
- De Cicco NN**, Pereira MG, Corrêa JR, Andrade-Neto VV, Saraiva FB, Chagas-Lima AC, Gondim KC, Torres-Santos EC, Folly E, Saraiva EM, Cunha-E-Silva NL, Soares MJ, Atella GC. 2012. LDL uptake by *Leishmania amazonensis*: involvement of membrane lipid microdomains. *Experimental Parasitology* **130**:330–340. DOI: <https://doi.org/10.1016/j.exppara.2012.02.014>, PMID: 22381219
- Déchamps S**, Shastri S, Wengelnik K, Vial HJ. 2010. Glycerophospholipid acquisition in *Plasmodium* - a puzzling assembly of biosynthetic pathways. *International Journal for Parasitology* **40**:1347–1365. DOI: <https://doi.org/10.1016/j.ijpara.2010.05.008>, PMID: 20600072
- Dennis EA**, Norris PC. 2015. Eicosanoid storm in infection and inflammation. *Nature Reviews Immunology* **15**:511–523. DOI: <https://doi.org/10.1038/nri3859>, PMID: 26139350
- Desjardins M**, Descoteaux A. 1997. Inhibition of phagolysosomal biogenesis by the *Leishmania* lipophosphoglycan. *Journal of Experimental Medicine* **185**:2061–2068. DOI: <https://doi.org/10.1084/jem.185.12.2061>, PMID: 9182677
- Dunning Hotopp JC**, Lin M, Madupu R, Crabtree J, Angiuoli SV, Eisen JA, Eisen J, Seshadri R, Ren Q, Wu M, Utterback TR, Smith S, Lewis M, Khouri H, Zhang C, Niu H, Lin Q, Ohashi N, Zhi N, Nelson W, et al. 2006. Comparative genomics of emerging human ehrlichiosis agents. *PLOS Genetics* **2**:e21. DOI: <https://doi.org/10.1371/journal.pgen.0020021>, PMID: 16482227

- Einicker-Lamas M**, Nascimento MT, Masuda CA, Oliveira MM, Caruso-Neves C. 2007. *Trypanosoma cruzi* epimastigotes: regulation of myo-inositol transport by effectors of protein kinases A and C. *Experimental Parasitology* **117**:171–177. DOI: <https://doi.org/10.1016/j.exppara.2007.04.011>, PMID: 17586497
- Eisen RJ**, Eisen L. 2018. The blacklegged tick, *Ixodes scapularis*: an increasing public health concern. *Trends in Parasitology* **34**:295–309. DOI: <https://doi.org/10.1016/j.pt.2017.12.006>, PMID: 29336985
- Fahy E**, Cotter D, Sud M, Subramaniam S. 2011. Lipid classification, structures and tools. *Biochimica Et Biophysica Acta (BBA) - Molecular and Cell Biology of Lipids* **1811**:637–647. DOI: <https://doi.org/10.1016/j.bbalip.2011.06.009>, PMID: 21704189
- Falkenburger BH**, Jensen JB, Dickson EJ, Suh BC, Hille B. 2010. Phosphoinositides: lipid regulators of membrane proteins. *The Journal of Physiology* **588**:3179–3185. DOI: <https://doi.org/10.1113/jphysiol.2010.192153>, PMID: 20519312
- Febbraio M**, Hajjar DP, Silverstein RL. 2001. CD36: a class B scavenger receptor involved in angiogenesis, atherosclerosis, inflammation, and lipid metabolism. *Journal of Clinical Investigation* **108**:785–791. DOI: <https://doi.org/10.1172/JCI14006>, PMID: 11560944
- Fernandes MC**, Cortez M, Geraldo Yoneyama KA, Straus AH, Yoshida N, Mortara RA. 2007. Novel strategy in *Trypanosoma cruzi* cell invasion: implication of cholesterol and host cell microdomains. *International Journal for Parasitology* **37**:1431–1441. DOI: <https://doi.org/10.1016/j.ijpara.2007.04.025>, PMID: 17582418
- Fernandes MC**, Cortez M, Flannery AR, Tam C, Mortara RA, Andrews NW. 2011. *Trypanosoma cruzi* subverts the sphingomyelinase-mediated plasma membrane repair pathway for cell invasion. *Journal of Experimental Medicine* **208**:909–921. DOI: <https://doi.org/10.1084/jem.20102518>, PMID: 21536739
- Field MC**, Horn D, Fairlamb AH, Ferguson MA, Gray DW, Read KD, De Rycker M, Torrie LS, Wyatt PG, Wyllie S, Gilbert IH. 2017. Anti-trypanosomatid drug discovery: an ongoing challenge and a continuing need. *Nature Reviews Microbiology* **15**:217–231. DOI: <https://doi.org/10.1038/nrmicro.2016.193>, PMID: 28239154
- Fitzgerald BL**, Molins CR, Islam MN, Graham B, Hove PR, Wormser GP, Hu L, Ashton LV, Belisle JT. 2020. Host metabolic response in early lyme disease. *Journal of Proteome Research* **19**:610–623. DOI: <https://doi.org/10.1021/acs.jproteome.9b00470>, PMID: 31821002
- Florin-Christensen J**, Suarez CE, Florin-Christensen M, Hines SA, McElwain TF, Palmer GH. 2000. Phosphatidylcholine formation is the predominant lipid biosynthetic event in the hemoparasite *Babesia bovis*. *Molecular and Biochemical Parasitology* **106**:147–156. DOI: [https://doi.org/10.1016/S0166-6851\(99\)00209-1](https://doi.org/10.1016/S0166-6851(99)00209-1), PMID: 10743618
- Fonager J**, Pasini EM, Braks JA, Klop O, Ramesar J, Remarque EJ, Vroegrijk IO, van Duinen SG, Thomas AW, Khan SM, Mann M, Kocken CH, Janse CJ, Franke-Fayard BM. 2012. Reduced CD36-dependent tissue sequestration of *Plasmodium*-infected erythrocytes is detrimental to malaria parasite growth *in vivo*. *Journal of Experimental Medicine* **209**:93–107. DOI: <https://doi.org/10.1084/jem.20110762>, PMID: 22184632
- França-Costa J**, Van Weyenbergh J, Boaventura VS, Luz NF, Malta-Santos H, Oliveira MC, Santos de Campos DC, Saldanha AC, dos-Santos WL, Bozza PT, Barral-Netto M, Barral A, Costa JM, Borges VM. 2015. Arginase I, Polyamine, and prostaglandin E2 pathways suppress the inflammatory response and contribute to diffuse cutaneous leishmaniasis. *Journal of Infectious Diseases* **211**:426–435. DOI: <https://doi.org/10.1093/infdis/jiu455>, PMID: 25124926
- França-Costa J**, Andrade BB, Khouri R, Van Weyenbergh J, Malta-Santos H, da Silva Santos C, Brodyskn CI, Costa JM, Barral A, Bozza PT, Boaventura V, Borges VM. 2016. Differential expression of the eicosanoid pathway in patients with localized or mucosal cutaneous leishmaniasis. *Journal of Infectious Diseases* **213**:1143–1147. DOI: <https://doi.org/10.1093/infdis/jiv548>, PMID: 26582954
- Fraser CM**, Casjens S, Huang WM, Sutton GG, Clayton R, Lathigra R, White O, Ketchum KA, Dodson R, Hickey EK, Gwinn M, Dougherty B, Tomb JF, Fleischmann RD, Richardson D, Peterson J, Kerlavage AR, Quackenbush J, Salzberg S, Hanson M, et al. 1997. Genomic sequence of a Lyme disease spirochaete, *Borrelia burgdorferi*. *Nature* **390**:580–586. DOI: <https://doi.org/10.1038/37551>, PMID: 9403685
- Garcia BL**, Zhi H, Wager B, Höök M, Skare JT. 2016. *Borrelia burgdorferi* BBK32 inhibits the classical pathway by blocking activation of the C1 complement complex. *PLOS Pathogens* **12**:e1005404. DOI: <https://doi.org/10.1371/journal.ppat.1005404>, PMID: 26808924
- Gardinassi LG**, Cordy RJ, Lacerda MVG, Salinas JL, Monteiro WM, Melo GC, Siqueira AM, Val FF, Tran V, Jones DP, Galinski MR, Li S. 2017. Metabolome-wide association study of peripheral parasitemia in *Plasmodium vivax* malaria. *International Journal of Medical Microbiology* **307**:533–541. DOI: <https://doi.org/10.1016/j.ijmm.2017.09.002>, PMID: 28927849
- Gardinassi LG**, Arévalo-Herrera M, Herrera S, Cordy RJ, Tran V, Smith MR, Johnson MS, Chacko B, Liu KH, Darley-Usmar VM, Go YM, Jones DP, Galinski MR, Li S, MaHPIC Consortium. 2018. Integrative metabolomics and transcriptomics signatures of clinical tolerance to *Plasmodium vivax* reveal activation of innate cell immunity and T cell signaling. *Redox Biology* **17**:158–170. DOI: <https://doi.org/10.1016/j.redox.2018.04.011>, PMID: 29698924
- Gazos-Lopes F**, Mesquita RD, Silva-Cardoso L, Senna R, Silveira AB, Jablonka W, Cudishevitch CO, Carneiro AB, Machado EA, Lima LG, Monteiro RQ, Nussenzeig RH, Folly E, Romeiro A, Vanbeselaere J, Mendonça-Previato L, Previato JO, Valenzuela JG, Ribeiro JM, Atella GC, et al. 2012. Glycoinositolphospholipids from trypanosomatids subvert nitric oxide production in *Rhodnius prolixus* salivary glands. *PLOS ONE* **7**:e47285. DOI: <https://doi.org/10.1371/journal.pone.0047285>, PMID: 23077586
- Gazos-Lopes F**, Martin JL, Dumoulin PC, Burleigh BA. 2017. Host triacylglycerols shape the lipidome of intracellular trypanosomes and modulate their growth. *PLOS Pathogens* **13**:e1006800. DOI: <https://doi.org/10.1371/journal.ppat.1006800>, PMID: 29281741

- Ghosh J**, Das S, Guha R, Ghosh D, Naskar K, Das A, Roy S. 2012. Hyperlipidemia offers protection against *Leishmania donovani* infection: role of membrane cholesterol. *Journal of Lipid Research* **53**:2560–2572. DOI: <https://doi.org/10.1194/jlr.M026914>, PMID: 23060454
- Ghosh J**, Bose M, Roy S, Bhattacharyya SN. 2013. *Leishmania donovani* targets Dicer1 to downregulate miR-122, lower serum cholesterol, and facilitate murine liver infection. *Cell Host & Microbe* **13**:277–288. DOI: <https://doi.org/10.1016/j.chom.2013.02.005>, PMID: 23498953
- Ghosh J**, Guha R, Das S, Roy S. 2014. Liposomal cholesterol delivery activates the macrophage innate immune arm to facilitate intracellular *Leishmania donovani* killing. *Infection and Immunity* **82**:607–617. DOI: <https://doi.org/10.1128/IAI.00583-13>, PMID: 24478076
- Gillespie LK**, Hoenen A, Morgan G, Mackenzie JM. 2010. The endoplasmic reticulum provides the membrane platform for biogenesis of the Flavivirus replication complex. *Journal of Virology* **84**:10438–10447. DOI: <https://doi.org/10.1128/JVI.00986-10>, PMID: 20686019
- Gillett MP**, Owen JS. 1992. Characteristics of the binding of human and bovine high-density lipoproteins by bloodstream forms of the African trypanosome, *Trypanosoma brucei brucei*. *Biochimica Et Biophysica Acta (BBA) - Lipids and Lipid Metabolism* **1123**:239–248. DOI: [https://doi.org/10.1016/0005-2760\(92\)90002-D](https://doi.org/10.1016/0005-2760(92)90002-D), PMID: 1536861
- González-Lázaro M**, Dinglasan RR, Hernández-Hernández FL, Rodríguez MH, Laclaustra M, Jacobs-Lorena M, Flores-Romo L. 2009. *Anopheles gambiae* croquemort SCRBO2, expression profile in the mosquito and its potential interaction with the malaria parasite *Plasmodium berghei*. *Insect Biochemistry and Molecular Biology* **39**:395–402. DOI: <https://doi.org/10.1016/j.ibmb.2009.03.008>, PMID: 19366631
- Goodger BV**, Commins MA, Waltisbuhl DJ, Wright IG, Rode-Bramanis K. 1990. *Babesia bovis*: immunity induced by vaccination with a lipid enriched fraction. *International Journal for Parasitology* **20**:685–687. DOI: [https://doi.org/10.1016/0020-7519\(90\)90129-B](https://doi.org/10.1016/0020-7519(90)90129-B), PMID: 2228430
- Gowda NM**, Wu X, Kumar S, Febbraio M, Gowda DC. 2013. CD36 contributes to malaria parasite-induced pro-inflammatory cytokine production and NK and T cell activation by dendritic cells. *PLOS ONE* **8**:e77604. DOI: <https://doi.org/10.1371/journal.pone.0077604>, PMID: 24204889
- Guerrero NA**, Camacho M, Vila L, Íñiguez MA, Chillón-Marinas C, Cuervo H, Poveda C, Fresno M, Gironès N. 2015. Cyclooxygenase-2 and prostaglandin E2 signaling through prostaglandin receptor EP-2 favor the development of myocarditis during acute *Trypanosoma cruzi* infection. *PLOS Neglected Tropical Diseases* **9**:e0004025. DOI: <https://doi.org/10.1371/journal.pntd.0004025>, PMID: 26305786
- Gulati S**, Ekland EH, Ruggles KV, Chan RB, Jayabalasingham B, Zhou B, Mantel PY, Lee MC, Spottiswoode N, Coburn-Flynn O, Hjelmqvist D, Worgall TS, Marti M, Di Paolo G, Fidock DA. 2015. Profiling the essential nature of lipid metabolism in asexual blood and gametocyte stages of *Plasmodium falciparum*. *Cell Host & Microbe* **18**:371–381. DOI: <https://doi.org/10.1016/j.chom.2015.08.003>, PMID: 26355219
- Gupta L**, Noh JY, Jo YH, Oh SH, Kumar S, Noh MY, Lee YS, Cha SJ, Seo SJ, Kim I, Han YS, Barillas-Mury C. 2010. Apolipoprotein III mediates antiparasitodal epithelial responses in *Anopheles gambiae* (G3) mosquitoes. *PLOS ONE* **5**:e15410. DOI: <https://doi.org/10.1371/journal.pone.0015410>, PMID: 21072214
- Hart T**, Nguyen NTT, Nowak NA, Zhang F, Linhardt RJ, Diuk-Wasser M, Ram S, Kraiczky P, Lin YP. 2018. Polymorphic factor H-binding activity of CspA protects Lyme borreliæ from the host complement in feeding ticks to facilitate tick-to-host transmission. *PLOS Pathogens* **14**:e1007106. DOI: <https://doi.org/10.1371/journal.ppat.1007106>, PMID: 29813137
- Hartiala P**, Hytönen J, Suhonen J, Leppäranta O, Tuominen-Gustafsson H, Viljanen MK. 2008. *Borrelia burgdorferi* inhibits human neutrophil functions. *Microbes and Infection* **10**:60–68. DOI: <https://doi.org/10.1016/j.micinf.2007.10.004>, PMID: 18068388
- Heaton NS**, Perera R, Berger KL, Khadka S, Lacount DJ, Kuhn RJ, Randall G. 2010. Dengue virus nonstructural protein 3 redistributes fatty acid synthase to sites of viral replication and increases cellular fatty acid synthesis. *PNAS* **107**:17345–17350. DOI: <https://doi.org/10.1073/pnas.1010811107>, PMID: 20855599
- Heaton NS**, Randall G. 2010. Dengue virus-induced autophagy regulates lipid metabolism. *Cell Host & Microbe* **8**:422–432. DOI: <https://doi.org/10.1016/j.chom.2010.10.006>, PMID: 21075353
- Hellwege J**, Meri T, Heikkilä T, Alitalo A, Panelius J, Lahdenne P, Seppälä IJ, Meri S. 2001. The complement regulator factor H binds to the surface protein OspE of *Borrelia burgdorferi*. *Journal of Biological Chemistry* **276**:8427–8435. DOI: <https://doi.org/10.1074/jbc.M007994200>, PMID: 11113124
- Henriques C**, Atella GC, Bonilha VL, de Souza W. 2003. Biochemical analysis of proteins and lipids found in parasitophorous vacuoles containing *Leishmania amazonensis*. *Parasitology Research* **89**:123–133. DOI: <https://doi.org/10.1007/s00436-002-0728-y>, PMID: 12489012
- Hissa B**, Duarte JG, Kelles LF, Santos FP, del Puerto HL, Gazzinelli-Guimarães PH, de Paula AM, Agero U, Mesquita ON, Guatimosim C, Chiari E, Andrade LO. 2012. Membrane cholesterol regulates lysosome-plasma membrane fusion events and modulates *Trypanosoma cruzi* invasion of host cells. *PLOS Neglected Tropical Diseases* **6**:e1583. DOI: <https://doi.org/10.1371/journal.pntd.0001583>, PMID: 22479662
- Hossain H**, Wellensiek HJ, Geyer R, Lochnit G. 2001. Structural analysis of glycolipids from *Borrelia burgdorferi*. *Biochimie* **83**:683–692. DOI: [https://doi.org/10.1016/S0300-9084\(01\)01296-2](https://doi.org/10.1016/S0300-9084(01)01296-2), PMID: 11522398
- Hoxmeier JC**, Fleshman AC, Broeckling CD, Prenni JE, Dolan MC, Gage KL, Eisen L. 2017. Metabolomics of the tick-*Borrelia* interaction during the nymphal tick blood meal. *Scientific Reports* **7**:44394. DOI: <https://doi.org/10.1038/srep44394>, PMID: 28287618
- Hsieh FL**, Turner L, Bolla JR, Robinson CV, Lavstsen T, Higgins MK. 2016. The structural basis for CD36 binding by the malaria parasite. *Nature Communications* **7**:12837. DOI: <https://doi.org/10.1038/ncomms12837>, PMID: 27667267

- Hyde JA, Trzeciakowski JP, Skare JT. 2007. *Borrelia burgdorferi* alters its gene expression and antigenic profile in response to CO₂ levels. *Journal of Bacteriology* **189**:437–445. DOI: <https://doi.org/10.1128/JB.01109-06>, PMID: 17098904
- Itoe MA, Sampaio JL, Cabal GG, Real E, Zuzarte-Luis V, March S, Bhatia SN, Frischknecht F, Thiele C, Shevchenko A, Mota MM. 2014. Host cell phosphatidylcholine is a key mediator of malaria parasite survival during liver stage infection. *Cell Host & Microbe* **16**:778–786. DOI: <https://doi.org/10.1016/j.chom.2014.11.006>, PMID: 25498345
- Jecna L, Dostalova A, Wilson R, Seblova V, Chang KP, Bates PA, Volf P. 2013. The role of surface glycoconjugates in *Leishmania* midgut attachment examined by competitive binding assays and experimental development in sand flies. *Parasitology* **140**:1026–1032. DOI: <https://doi.org/10.1017/S0031182013000358>, PMID: 23611086
- Jemielity S, Wang JJ, Chan YK, Ahmed AA, Li W, Monahan S, Bu X, Farzan M, Freeman GJ, Umetsu DT, Dekruyff RH, Choe H. 2013. TIM-family proteins promote infection of multiple enveloped viruses through virion-associated phosphatidylserine. *PLOS Pathogens* **9**:e1003232. DOI: <https://doi.org/10.1371/journal.ppat.1003232>, PMID: 23555248
- Jiménez de Oya N, Esler WP, Huard K, El-Kattan AF, Karamanlidis G, Blázquez AB, Ramos-Ibeas P, Escribano-Romero E, Louloudes-Lázaro A, Casas J, Sobrino F, Hoehn K, James DE, Gutiérrez-Adán A, Saiz JC, Martín-Acebes MA. 2019. Targeting host metabolism by inhibition of acetyl-Coenzyme A carboxylase reduces Flavivirus infection in mouse models. *Emerging Microbes & Infections* **8**:624–636. DOI: <https://doi.org/10.1080/22221751.2019.1604084>, PMID: 30999821
- Johndrow C, Nelson R, Tanowitz H, Weiss LM, Nagajyothi F. 2014. *Trypanosoma cruzi* infection results in an increase in intracellular cholesterol. *Microbes and Infection* **16**:337–344. DOI: <https://doi.org/10.1016/j.micinf.2014.01.001>, PMID: 24486184
- Junjhon J, Pennington JG, Edwards TJ, Perera R, Lanman J, Kuhn RJ. 2014. Ultrastructural characterization and three-dimensional architecture of replication sites in Dengue virus-infected mosquito cells. *Journal of Virology* **88**:4687–4697. DOI: <https://doi.org/10.1128/JVI.00118-14>, PMID: 24522909
- Jupatanakul N, Sim S, Angleró-Rodríguez YI, Souza-Neto J, Das S, Poti KE, Rossi SL, Bergren N, Vasilakis N, Dimopoulos G. 2017. Engineered *aedes aegypti* JAK/STAT Pathway-Mediated immunity to dengue virus. *PLOS Neglected Tropical Diseases* **11**:e0005187. DOI: <https://doi.org/10.1371/journal.pntd.0005187>, PMID: 28081143
- Kamhawi S, Ramalho-Ortigao M, Pham VM, Kumar S, Lawyer PG, Turco SJ, Barillas-Mury C, Sacks DL, Valenzuela JG. 2004. A role for insect galectins in parasite survival. *Cell* **119**:329–341. DOI: <https://doi.org/10.1016/j.cell.2004.10.009>, PMID: 15543683
- Kamhawi S. 2006. Phlebotomine sand flies and *Leishmania* parasites: friends or foes? *Trends in Parasitology* **22**:439–445. DOI: <https://doi.org/10.1016/j.pt.2006.06.012>, PMID: 16843727
- Kilian N, Choi JY, Voelker DR, Ben Mamoun C. 2018. Role of phospholipid synthesis in the development and differentiation of malaria parasites in the blood. *Journal of Biological Chemistry* **293**:17308–17316. DOI: <https://doi.org/10.1074/jbc.R118.003213>, PMID: 30287688
- Kluck GEG, Wendt CHC, Imperio GED, Araujo MFC, Atella TC, da Rocha I, Miranda KR, Atella GC. 2019. *Plasmodium* infection induces dyslipidemia and a hepatic lipogenic state in the host through the inhibition of the AMPK-ACC pathway. *Scientific Reports* **9**:14695. DOI: <https://doi.org/10.1038/s41598-019-51193-x>, PMID: 31604978
- Kraiczky P, Skerka C, Kirschfink M, Brade V, Zipfel PF. 2001. Immune evasion of *Borrelia burgdorferi* by acquisition of human complement regulators FHL-1/reconectin and factor H. *European Journal of Immunology* **31**:1674–1684. DOI: [https://doi.org/10.1002/1521-4141\(200106\)31:6<1674::AID-IMMU1674>3.0.CO;2-2](https://doi.org/10.1002/1521-4141(200106)31:6<1674::AID-IMMU1674>3.0.CO;2-2), PMID: 11385611
- Kubata BK, Duszenko M, Kabututu Z, Rawer M, Szallies A, Fujimori K, Inui T, Nozaki T, Yamashita K, Horii T, Urade Y, Hayaishi O. 2000. Identification of a novel prostaglandin f(2alpha) synthase in *Trypanosoma brucei*. *Journal of Experimental Medicine* **192**:1327–1338. DOI: <https://doi.org/10.1084/jem.192.9.1327>, PMID: 11067881
- Kumar GA, Roy S, Jafurulla M, Mandal C, Chattopadhyay A. 2016. Statin-induced chronic cholesterol depletion inhibits *leishmania donovani* infection: relevance of optimum host membrane cholesterol. *Biochimica Et Biophysica Acta (BBA) - Biomembranes* **1858**:2088–2096. DOI: <https://doi.org/10.1016/j.bbamem.2016.06.010>, PMID: 27319380
- Labaied M, Jayabalasingham B, Bano N, Cha SJ, Sandoval J, Guan G, Coppens I. 2011. *Plasmodium* salvages cholesterol internalized by LDL and synthesized *de novo* in the liver. *Cellular Microbiology* **13**:569–586. DOI: <https://doi.org/10.1111/j.1462-5822.2010.01555.x>, PMID: 21105984
- Lal CS, Kumar A, Kumar S, Pandey K, Kumar N, Bimal S, Sinha PK, Das P. 2007. Hypocholesterolemia and increased triglyceride in pediatric visceral leishmaniasis. *Clinica Chimica Acta* **382**:151–153. DOI: <https://doi.org/10.1016/j.cca.2007.04.007>, PMID: 17509550
- Landfear SM, Zilberstein D. 2019. Sensing what's out there - Kinetoplastid parasites. *Trends in Parasitology* **35**:274–277. DOI: <https://doi.org/10.1016/j.pt.2018.12.004>, PMID: 30655057
- LaRocca TJ, Crowley JT, Cusack BJ, Pathak P, Benach J, London E, Garcia-Monco JC, Benach JL. 2010. Cholesterol lipids of *Borrelia burgdorferi* form lipid rafts and are required for the bactericidal activity of a complement-independent antibody. *Cell Host & Microbe* **8**:331–342. DOI: <https://doi.org/10.1016/j.chom.2010.09.001>, PMID: 20951967

- Leier HC, Messer WB, Tafesse FG. 2018. Lipids and pathogenic flaviviruses: an intimate union. *PLOS Pathogens* **14**:e1006952. DOI: <https://doi.org/10.1371/journal.ppat.1006952>, PMID: 29746606
- Leier HC, Weinstein JB, Kyle JE, Lee JY, Bramer LM, Stratton KG, Kempthorne D, Navratil AR, Tafesse EG, Hornemann T, Messer WB, Dennis EA, Metz TO, Barklis E, Tafesse FG. 2020. A global lipid map defines a network essential for zika virus replication. *Nature Communications* **11**:3652. DOI: <https://doi.org/10.1038/s41467-020-17433-9>, PMID: 32694525
- Leta S, Beyene TJ, De Clercq EM, Amenu K, Kraemer MUG, Revie CW. 2018. Global risk mapping for major diseases transmitted by *Aedes aegypti* and *Aedes albopictus*. *International Journal of Infectious Diseases* **67**: 25–35. DOI: <https://doi.org/10.1016/j.ijid.2017.11.026>, PMID: 29196275
- Lewis MD, Kelly JM. 2016. Putting infection dynamics at the heart of Chagas disease. *Trends in Parasitology* **32**: 899–911. DOI: <https://doi.org/10.1016/j.pt.2016.08.009>, PMID: 27612651
- Li Y, Kakinami C, Li Q, Yang B, Li H. 2013. Human apolipoprotein A-I is associated with Dengue virus and enhances virus infection through SR-BI. *PLOS ONE* **8**:e70390. DOI: <https://doi.org/10.1371/journal.pone.0070390>, PMID: 23894648
- Li Y, Shah-Simpson S, Okrah K, Belew AT, Choi J, Caradonna KL, Padmanabhan P, Ndegwa DM, Temanni MR, Corrada Bravo H, El-Sayed NM, Burleigh BA. 2016. Transcriptome remodeling in *Trypanosoma cruzi* and human cells during intracellular infection. *PLOS Pathogens* **12**:e1005511. DOI: <https://doi.org/10.1371/journal.ppat.1005511>, PMID: 27046031
- Liang FT, Yan J, Mbow ML, Sviat SL, Gilmore RD, Mamula M, Fikrig E. 2004. *Borrelia burgdorferi* changes its surface antigenic expression in response to host immune responses. *Infection and Immunity* **72**:5759–5767. DOI: <https://doi.org/10.1128/IAI.72.10.5759-5767.2004>, PMID: 15385475
- Lima MS, Carneiro AB, Souto-Padron T, Jurberg J, Silva-Neto MAC, Atella GC. 2018. *Triatoma infestans* relies on salivary lysophosphatidylcholine to enhance *Trypanosoma cruzi* transmission. *Acta Tropica* **178**:68–72. DOI: <https://doi.org/10.1016/j.actatropica.2017.10.022>, PMID: 29107570
- Lin M, Grandinetti G, Hartnell LM, Bliss D, Subramaniam S, Rikihisa Y. 2020. Host membrane lipids are trafficked to membranes of intravacuolar bacterium *Ehrlichia chaffeensis*. *PNAS* **117**:8032–8043. DOI: <https://doi.org/10.1073/pnas.1921619117>, PMID: 32193339
- Lin M, Rikihisa Y. 2003a. *Ehrlichia chaffeensis* and *Anaplasma phagocytophilum* lack genes for lipid A biosynthesis and incorporate cholesterol for their survival. *Infection and Immunity* **71**:5324–5331. DOI: <https://doi.org/10.1128/IAI.71.9.5324-5331.2003>, PMID: 12933880
- Lin M, Rikihisa Y. 2003b. Obligatory intracellular parasitism by *Ehrlichia chaffeensis* and *Anaplasma phagocytophilum* involves caveolae and glycosylphosphatidylinositol-anchored proteins. *Cellular Microbiology* **5**:809–820. DOI: <https://doi.org/10.1046/j.1462-5822.2003.00322.x>, PMID: 14531896
- Loría-Cervera EN, Andrade-Narvaez F. 2020. The role of monocytes/macrophages in leishmania infection: a glance at the human response. *Acta Tropica* **207**:105456. DOI: <https://doi.org/10.1016/j.actatropica.2020.105456>, PMID: 32222362
- Lovo-Martins MI, Malvezi AD, Zanluqui NG, Lucchetti BFC, Tatakihara VLH, Mörking PA, de Oliveira AG, Goldenberg S, Wowk PF, Pinge-Filho P. 2018. Extracellular vesicles shed by *Trypanosoma cruzi* Potentiate Infection and Elicit Lipid Body Formation and PGE₂ Production in Murine Macrophages. *Frontiers in Immunology* **9**:896. DOI: <https://doi.org/10.3389/fimmu.2018.00896>, PMID: 29755471
- Lu YE, Cassese T, Kielian M. 1999. The cholesterol requirement for Sindbis virus entry and exit and characterization of a spike protein region involved in cholesterol dependence. *Journal of Virology* **73**:4272–4278. DOI: <https://doi.org/10.1128/JVI.73.5.4272-4278.1999>, PMID: 10196324
- Lukeš J, Butenko A, Hashimi H, Maslov DA, Votýpka J, Yurchenko V. 2018. Trypanosomatids are much more than just trypanosomes: clues from the expanded family tree. *Trends in Parasitology* **34**:466–480. DOI: <https://doi.org/10.1016/j.pt.2018.03.002>, PMID: 29605546
- Mackenzie JM, Khromykh AA, Parton RG. 2007. Cholesterol manipulation by west nile virus perturbs the cellular immune response. *Cell Host & Microbe* **2**:229–239. DOI: <https://doi.org/10.1016/j.chom.2007.09.003>, PMID: 18005741
- Martín-Acebes MA, Merino-Ramos T, Blázquez AB, Casas J, Escribano-Romero E, Sobrino F, Saiz JC. 2014. The composition of west nile virus lipid envelope unveils a role of sphingolipid metabolism in Flavivirus biogenesis. *Journal of Virology* **88**:12041–12054. DOI: <https://doi.org/10.1128/JVI.02061-14>, PMID: 25122799
- Martín-Acebes MA, Gabandé-Rodríguez E, García-Cabrero AM, Sánchez MP, Ledesma MD, Sobrino F, Saiz JC. 2016. Host sphingomyelin increases west nile virus infection in vivo. *Journal of Lipid Research* **57**:422–432. DOI: <https://doi.org/10.1194/jlr.M064212>, PMID: 26764042
- Mazzon M, Castro C, Thaa B, Liu L, Mutso M, Liu X, Mahalingam S, Griffin JL, Marsh M, McInerney GM. 2018. Alphavirus-induced hyperactivation of PI3K/AKT directs pro-viral metabolic changes. *PLOS Pathogens* **14**: e1006835. DOI: <https://doi.org/10.1371/journal.ppat.1006835>, PMID: 29377936
- McClure EE, Chávez ASO, Shaw DK, Carlyon JA, Ganta RR, Noh SM, Wood DO, Bavoil PM, Brayton KA, Martinez JJ, McBride JW, Valdivia RH, Munderloh UG, Pedra JHF. 2017. Engineering of obligate intracellular Bacteria: progress, challenges and paradigms. *Nature Reviews Microbiology* **15**:544–558. DOI: <https://doi.org/10.1038/nrmicro.2017.59>, PMID: 28626230
- Meertens L, Carnec X, Lecoin MP, Ramdasi R, Guivel-Benhassine F, Lew E, Lemke G, Schwart O, Amara A. 2012. The TIM and TAM families of phosphatidylserine receptors mediate dengue virus entry. *Cell Host & Microbe* **12**:544–557. DOI: <https://doi.org/10.1016/j.chom.2012.08.009>, PMID: 23084921
- Melo CF, de Oliveira DN, Lima EO, Guerreiro TM, Esteves CZ, Beck RM, Padilla MA, Milanez GP, Arns CW, Proença-Modena JL, Souza-Neto JA, Catharino RR. 2016. A lipidomics approach in the characterization of Zika-

- Infected mosquito cells: potential targets for breaking the transmission cycle. *PLOS ONE* **11**:e0164377. DOI: <https://doi.org/10.1371/journal.pone.0164377>, PMID: 27723844
- Melo C, Delafiori J, de Oliveira DN, Guerreiro TM, Esteves CZ, Lima EO, Pando-Robles V, Catharino RR, Zika-Unicamp Network. 2017. Serum metabolic alterations upon zika infection. *Frontiers in Microbiology* **8**:1954. DOI: <https://doi.org/10.3389/fmicb.2017.01954>, PMID: 29067015
- Merino-Ramos T, Vázquez-Calvo Á, Casas J, Sobrino F, Saiz JC, Martín-Acebes MA. 2016. Modification of the host cell lipid metabolism induced by hypolipidemic drugs targeting the acetyl coenzyme A carboxylase impairs west nile virus replication. *Antimicrobial Agents and Chemotherapy* **60**:307–315. DOI: <https://doi.org/10.1128/AAC.01578-15>, PMID: 26503654
- Mesquita RD, Carneiro AB, Bafica A, Gazos-Lopes F, Takiya CM, Souto-Pradon T, Vieira DP, Ferreira-Pereira A, Almeida IC, Figueiredo RT, Porto BN, Bozza MT, Graça-Souza AV, Lopes AH, Atella GC, Silva-Neto MA. 2008. *Trypanosoma cruzi* infection is enhanced by vector saliva through immunosuppressant mechanisms mediated by lysophosphatidylcholine. *Infection and Immunity* **76**:5543–5552. DOI: <https://doi.org/10.1128/IAI.00683-08>, PMID: 18794282
- Mikkelsen RB, Kamber M, Wadwa KS, Lin PS, Schmidt-Ullrich R. 1988. The role of lipids in *Plasmodium falciparum* invasion of erythrocytes: a coordinated biochemical and microscopic analysis. *PNAS* **85**:5956–5960. DOI: <https://doi.org/10.1073/pnas.85.16.5956>, PMID: 3045809
- Milanović Z, Vekić J, Radonjić V, Ilić Božović A, Zeljković A, Janac J, Spasojević-Kalimanovska V, Buch J, Chandrashekar R, Bojić-Trbojević Ž, Hajduković L, Christopher MM, Kovačević Filipović M. 2019. Association of acute *Babesia canis* infection and serum lipid, lipoprotein, and apoprotein concentrations in dogs. *Journal of Veterinary Internal Medicine* **33**:1686–1694. DOI: <https://doi.org/10.1111/jvim.15537>, PMID: 31175698
- Millieroux Y, Mazet M, Bouyssou G, Allmann S, Kiema TR, Bertiaux E, Fouillen L, Thapa C, Biran M, Plazolles N, Dittrich-Domergue F, Crouzols A, Wierenga RK, Rotureau B, Moreau P, Bringaud F. 2018. *De novo* biosynthesis of sterols and fatty acids in the *Trypanosoma brucei* procyclic form: carbon source preferences and metabolic flux redistributions. *PLOS Pathogens* **14**:e1007116. DOI: <https://doi.org/10.1371/journal.ppat.1007116>, PMID: 29813135
- Moradin N, Descoteaux A. 2012. *Leishmania* promastigotes: building a safe niche within macrophages. *Frontiers in Cellular and Infection Microbiology* **2**:121. DOI: <https://doi.org/10.3389/fcimb.2012.00121>, PMID: 23050244
- Morato CI, da Silva IA, Borges AF, Dorta ML, Oliveira MA, Jancar S, Serezani CH, Ribeiro-Dias F. 2014. Essential role of leukotriene B4 on *Leishmania (Viannia) braziliensis* killing by human macrophages. *Microbes and Infection* **16**:945–953. DOI: <https://doi.org/10.1016/j.micinf.2014.08.015>, PMID: 25195516
- Moreira CJC, De Cicco NNT, Galdino TS, Feder D, Gonzalez MS, Miguel RB, Coura JR, Castro HC, Azambuja P, Atella GC, Ratcliffe NA, Mello CB. 2018. Lipoproteins from vertebrate host blood plasma are involved in *Trypanosoma cruzi* epimastigote agglutination and participate in interaction with the vector insect, *Rhodnius prolixus*. *Experimental Parasitology* **195**:24–33. DOI: <https://doi.org/10.1016/j.exppara.2018.09.017>, PMID: 30261188
- Myškova J, Svobodova M, Beverley SM, Volf P. 2007. A lipophosphoglycan-independent development of *Leishmania* in permissive sand flies. *Microbes and Infection* **9**:317–324. DOI: <https://doi.org/10.1016/j.micinf.2006.12.010>, PMID: 17307009
- Nagajyothi F, Weiss LM, Silver DL, Desruisseaux MS, Scherer PE, Herz J, Tanowitz HB. 2011. *Trypanosoma cruzi* utilizes the host low density lipoprotein receptor in invasion. *PLOS Neglected Tropical Diseases* **5**:e953. DOI: <https://doi.org/10.1371/journal.pntd.0000953>, PMID: 21408103
- Nagajyothi F, Weiss LM, Zhao D, Koba W, Jelicks LA, Cui MH, Factor SM, Scherer PE, Tanowitz HB. 2014. High fat diet modulates *Trypanosoma cruzi* infection associated myocarditis. *PLOS Neglected Tropical Diseases* **8**:e3118. DOI: <https://doi.org/10.1371/journal.pntd.0003118>, PMID: 25275627
- Neafsey DE, Waterhouse RM, Abai MR, Aganezov SS, Alekseyev MA, Allen JE, Amon J, Arcà B, Arensburger P, Artemov G, Assour LA, Basseri H, Berlin A, Birren BW, Blandin SA, Brockman AI, Burkot TR, Burt A, Chan CS, Chauve C, et al. 2015. Mosquito genomics highly evolvable malaria vectors: the genomes of 16 anopheles mosquitoes. *Science* **347**:1258522. DOI: <https://doi.org/10.1126/science.1258522>, PMID: 25554792
- Ng CG, Coppens I, Govindarajan D, Pisciotta J, Shulaev V, Griffin DE. 2008. Effect of host cell lipid metabolism on Alphavirus replication, virion morphogenesis, and infectivity. *PNAS* **105**:16326–16331. DOI: <https://doi.org/10.1073/pnas.0808720105>, PMID: 18845681
- Osorio y Fortéa J, de La Llave E, Regnault B, Coppée JY, Milon G, Lang T, Prina E. 2009. Transcriptional signatures of BALB/c mouse macrophages housing multiplying *Leishmania amazonensis* amastigotes. *BMC Genomics* **10**:119. DOI: <https://doi.org/10.1186/1471-2164-10-119>, PMID: 19302708
- Osuna-Ramos JF, Reyes-Ruiz JM, Del Ángel RM. 2018. The role of host cholesterol during Flavivirus infection. *Frontiers in Cellular and Infection Microbiology* **8**:388. DOI: <https://doi.org/10.3389/fcimb.2018.00388>, PMID: 30450339
- Pal U, de Silva AM, Montgomery RR, Fish D, Anguita J, Anderson JF, Lobet Y, Fikrig E. 2000. Attachment of *Borrelia burgdorferi* within *Ixodes scapularis* mediated by outer surface protein A. *Journal of Clinical Investigation* **106**:561–569. DOI: <https://doi.org/10.1172/JCI9427>, PMID: 10953031
- Pal U, Yang X, Chen M, Bockenstedt LK, Anderson JF, Flavell RA, Norgard MV, Fikrig E. 2004. OspC facilitates *Borrelia burgdorferi* invasion of *Ixodes scapularis* salivary glands. *Journal of Clinical Investigation* **113**:220–230. DOI: <https://doi.org/10.1172/JCI200419894>, PMID: 14722614
- Paloque L, Perez-Berezo T, Abot A, Dalloux-Chioccioli J, Bourgeade-Delmas S, Le Faouder P, Pujo J, Teste MA, François JM, Schebb NH, Mainka M, Rolland C, Blanpied C, Dietrich G, Bertrand-Michel J, Deraison C, Valentin

- A, Cenac N. 2019. Polyunsaturated fatty acid metabolites: biosynthesis in *Leishmania* and role in parasite/host interaction. *Journal of Lipid Research* **60**:636–647. DOI: <https://doi.org/10.1194/jlr.M091736>, PMID: 30626624
- Passos LSA, Magalhães LMD, Soares RP, Marques AF, Nunes M, Gollob KJ, Dutra WO. 2017. Specific activation of CD4⁺ CD8⁻ double-negative T cells by *Trypanosoma cruzi* derived glycolipids induces a proinflammatory profile associated with cardiomyopathy in Chagas patients. *Clinical & Experimental Immunology* **190**:122–132. DOI: <https://doi.org/10.1111/cei.12992>, PMID: 28543170
- Peña J, Harris E. 2012. Early Dengue virus protein synthesis induces extensive rearrangement of the endoplasmic reticulum independent of the UPR and SREBP-2 pathway. *PLOS ONE* **7**:e38202. DOI: <https://doi.org/10.1371/journal.pone.0038202>, PMID: 22675522
- Pereira MG, Visbal G, Costa TFR, Frases S, de Souza W, Atella G, Cunha-E-Silva N. 2018. *Trypanosoma cruzi* epimastigotes store cholesteryl esters in lipid droplets after cholesterol endocytosis. *Molecular and Biochemical Parasitology* **224**:6–16. DOI: <https://doi.org/10.1016/j.molbiopara.2018.07.004>, PMID: 30016698
- Perera R, Riley C, Isaac G, Hopf-Jannasch AS, Moore RJ, Weitz KW, Pasa-Tolic L, Metz TO, Adamec J, Kuhn RJ. 2012. Dengue virus infection perturbs lipid homeostasis in infected mosquito cells. *PLOS Pathogens* **8**:e1002584. DOI: <https://doi.org/10.1371/journal.ppat.1002584>, PMID: 22457619
- Perkins DJ, Kremsner PG, Weinberg JB. 2001. Inverse relationship of plasma prostaglandin E2 and blood mononuclear cell cyclooxygenase-2 with disease severity in children with *Plasmodium falciparum* malaria. *The Journal of Infectious Diseases* **183**:113–118. DOI: <https://doi.org/10.1086/317660>, PMID: 11076710
- Pessi G, Kociubinski G, Mamoun CB. 2004. A pathway for phosphatidylcholine biosynthesis in *Plasmodium falciparum* involving phosphoethanolamine methylation. *PNAS* **101**:6206–6211. DOI: <https://doi.org/10.1073/pnas.0307742101>, PMID: 15073329
- Pessoa CC, Reis LC, Ramos-Sanchez EM, Orikaza CM, Cortez C, de Castro Levatti EV, Badaró ACB, Yamamoto J, D’Almeida V, Goto H, Mortara RA, Real F. 2019. ATP6V0d2 controls *Leishmania* parasitophorous vacuole biogenesis via cholesterol homeostasis. *PLOS Pathogens* **15**:e1007834. DOI: <https://doi.org/10.1371/journal.ppat.1007834>, PMID: 31199856
- Phalen T, Kielian M. 1991. Cholesterol is required for infection by semliki forest virus. *Journal of Cell Biology* **112**:615–623. DOI: <https://doi.org/10.1083/jcb.112.4.615>, PMID: 1671572
- Pianta A, Drouin EE, Crowley JT, Arvikar S, Strle K, Costello CE, Steere AC. 2015. Annexin A2 is a target of autoimmune T and B cell responses associated with synovial fibroblast proliferation in patients with antibiotic-refractory Lyme arthritis. *Clinical Immunology* **160**:336–341. DOI: <https://doi.org/10.1016/j.clim.2015.07.005>, PMID: 26187145
- Plagge M, Laskay T. 2017. Early production of the Neutrophil-Derived lipid mediators LTB 4 and LXA 4 is modulated by intracellular infection with leishmania major. *BioMed Research International* **2017**:1–8. DOI: <https://doi.org/10.1155/2017/2014583>
- Pucadyil TJ, Tewary P, Madhubala R, Chattopadhyay A. 2004. Cholesterol is required for *Leishmania donovani* infection: implications in leishmaniasis. *Molecular and Biochemical Parasitology* **133**:145–152. DOI: <https://doi.org/10.1016/j.molbiopara.2003.10.002>, PMID: 14698427
- Rabhi I, Rabhi S, Ben-Othman R, Rasche A, Daskalaki A, Trentin B, Piquemal D, Regnault B, Descoteaux A, Guizani-Tabbane L, Sysco Consortium. 2012. Transcriptomic signature of *leishmania* infected mice macrophages: a metabolic point of view. *PLOS Neglected Tropical Diseases* **6**:e1763. DOI: <https://doi.org/10.1371/journal.pntd.0001763>, PMID: 22928052
- Rabhi S, Rabhi I, Trentin B, Piquemal D, Regnault B, Goyard S, Lang T, Descoteaux A, Enninga J, Guizani-Tabbane L. 2016. Lipid droplet formation, their localization and dynamics during leishmania major macrophage infection. *PLOS ONE* **11**:e0148640. DOI: <https://doi.org/10.1371/journal.pone.0148640>, PMID: 26871576
- Ramakrishnan S, Serricchio M, Striepen B, Bütikofer P. 2013. Lipid synthesis in protozoan parasites: a comparison between kinetoplastids and apicomplexans. *Progress in Lipid Research* **52**:488–512. DOI: <https://doi.org/10.1016/j.plipres.2013.06.003>, PMID: 23827884
- Ray SS, Wilkinson CL, Paul KS. 2018. Regulation of *Trypanosoma brucei* acetyl coenzyme A carboxylase by environmental lipids. *mSphere* **3**:e00164-18. DOI: <https://doi.org/10.1128/mSphere.00164-18>, PMID: 29997119
- Remenyi R, Roberts GC, Zothner C, Merits A, Harris M. 2017. SNAP-tagged chikungunya virus replicons improve visualisation of Non-Structural protein 3 by fluorescence microscopy. *Scientific Reports* **7**:5682. DOI: <https://doi.org/10.1038/s41598-017-05820-0>, PMID: 28720784
- Reynolds RA, Kwon H, Smith RC. 2020. 20-Hydroxyecdysone primes innate immune responses that limit bacterial and malarial parasite survival in *Anopheles gambiae*. *mSphere* **5**:e00983-19. DOI: <https://doi.org/10.1128/mSphere.00983-19>, PMID: 32295874
- Rogovskyy AS, Bankhead T. 2013. Variable VlsE is critical for host reinfection by the lyme disease spirochete. *PLOS ONE* **8**:e61226. DOI: <https://doi.org/10.1371/journal.pone.0061226>, PMID: 23593438
- Rothwell C, Lebreton A, Young Ng C, Lim JY, Liu W, Vasudevan S, Labow M, Gu F, Gaither LA. 2009. Cholesterol biosynthesis modulation regulates dengue viral replication. *Virology* **389**:8–19. DOI: <https://doi.org/10.1016/j.virol.2009.03.025>, PMID: 19419745
- Sá FA, Coutinho-Rodrigues CJB, Angelo IC, Fiorotti JP, Atella GC, Bittencourt V, Silva-Neto MAC. 2018. *Metarhizium anisopliae* s.l. modulation of lipid metabolism during tick infection is independent of AMPK and ERK pathways. *Parasitology Research* **117**:793–799. DOI: <https://doi.org/10.1007/s00436-018-5753-6>, PMID: 29352348
- Sacks DL, Modi G, Rowton E, Späth G, Epstein L, Turco SJ, Beverley SM. 2000. The role of phosphoglycans in *Leishmania*-sand fly interactions. *PNAS* **97**:406–411. DOI: <https://doi.org/10.1073/pnas.97.1.406>, PMID: 10618431

- Samanta D**, Mulye M, Clemente TM, Justis AV, Gilk SD. 2017. Manipulation of host cholesterol by obligate intracellular Bacteria. *Frontiers in Cellular and Infection Microbiology* **7**:165. DOI: <https://doi.org/10.3389/fcimb.2017.00165>, PMID: 28529926
- Samsa MM**, Mondotte JA, Iglesias NG, Assunção-Miranda I, Barbosa-Lima G, Da Poian AT, Bozza PT, Gamarnik AV. 2009. Dengue virus capsid protein usurps lipid droplets for viral particle formation. *PLOS Pathogens* **5**:e1000632. DOI: <https://doi.org/10.1371/journal.ppat.1000632>, PMID: 19851456
- Schleifer KW**, Mansfield JM. 1993. Suppressor macrophages in African trypanosomiasis inhibit T cell proliferative responses by nitric oxide and prostaglandins. *Journal of Immunology* **151**:5492–5503. PMID: 8228241
- Schwan TG**, Piesman J, Golde WT, Dolan MC, Rosa PA. 1995. Induction of an outer surface protein on *Borrelia burgdorferi* during tick feeding. *PNAS* **92**:2909–2913. DOI: <https://doi.org/10.1073/pnas.92.7.2909>, PMID: 7708747
- Semini G**, Paape D, Paterou A, Schroeder J, Barrios-Llerena M, Aebischer T. 2017. Changes to cholesterol trafficking in macrophages by *Leishmania* parasites infection. *MicrobiologyOpen* **6**:e00469. DOI: <https://doi.org/10.1002/mbo3.469>
- Serghides L**, Kain KC. 2001. Peroxisome proliferator-activated receptor gamma-retinoid X receptor agonists increase CD36-dependent phagocytosis of *Plasmodium falciparum*-parasitized erythrocytes and decrease malaria-induced TNF-alpha secretion by monocytes/macrophages. *The Journal of Immunology* **166**:6742–6748. DOI: <https://doi.org/10.4049/jimmunol.166.11.6742>, PMID: 11359831
- Sharma J**, Eickhoff CS, Hoft DF, Ford DA, Gross RW, McHowat J. 2013. The absence of myocardial calcium-independent phospholipase A2γ results in impaired prostaglandin E2 production and decreased survival in mice with acute *Trypanosoma cruzi* infection. *Infection and Immunity* **81**:2278–2287. DOI: <https://doi.org/10.1128/IAI.00497-12>, PMID: 23429536
- Shaw DK**, Wang X, Brown LJ, Chávez AS, Reif KE, Smith AA, Scott AJ, McClure EE, Boradia VM, Hammond HL, Sundberg EJ, Snyder GA, Liu L, DePonte K, Villar M, Ueti MW, de la Fuente J, Ernst RK, Pal U, Fikrig E, et al. 2017. Infection-derived lipids elicit an immune deficiency circuit in arthropods. *Nature Communications* **8**:14401. DOI: <https://doi.org/10.1038/ncomms14401>, PMID: 28195158
- Simons K**, Ehehalt R. 2002. Cholesterol, lipid rafts, and disease. *Journal of Clinical Investigation* **110**:597–603. DOI: <https://doi.org/10.1172/JCI0216390>, PMID: 12208858
- Soto-Acosta R**, Mosso C, Cervantes-Salazar M, Puerta-Guardo H, Medina F, Favari L, Ludert JE, del Angel RM. 2013. The increase in cholesterol levels at early stages after dengue virus infection correlates with an augment in LDL particle uptake and HMG-CoA reductase activity. *Virology* **442**:132–147. DOI: <https://doi.org/10.1016/j.virol.2013.04.003>, PMID: 23642566
- Soto-Acosta R**, Bautista-Carbajal P, Cervantes-Salazar M, Angel-Ambrocio AH, Del Angel RM. 2017. DENV up-regulates the HMG-CoA reductase activity through the impairment of AMPK phosphorylation: a potential antiviral target. *PLOS Pathogens* **13**:e1006257. DOI: <https://doi.org/10.1371/journal.ppat.1006257>, PMID: 28384260
- Späth GF**, Garraway LA, Turco SJ, Beverley SM. 2003. The role(s) of lipophosphoglycan (LPG) in the establishment of *Leishmania major* infections in mammalian hosts. *PNAS* **100**:9536–9541. DOI: <https://doi.org/10.1073/pnas.1530604100>, PMID: 12869694
- Szondy Z**, Sarang Z, Kiss B, Garabuczi É, Köröskényi K. 2017. Anti-inflammatory mechanisms triggered by apoptotic cells during their clearance. *Frontiers in Immunology* **8**:909. DOI: <https://doi.org/10.3389/fimmu.2017.00909>, PMID: 28824635
- Takayama K**, Rothenberg RJ, Barbour AG. 1987. Absence of lipopolysaccharide in the Lyme disease spirochete, *Borrelia burgdorferi*. *Infection and Immunity* **55**:2311–2313. DOI: <https://doi.org/10.1128/IAI.55.9.2311-2313.1987>, PMID: 3623705
- Tanaka TQ**, Tokuoka SM, Nakatani D, Hamano F, Kawazu SI, Wellems TE, Tokumasu F. 2019. Polyunsaturated fatty acids promote *Plasmodium falciparum* gametocytogenesis. *Biol Open* **8**:bio042259. DOI: <https://doi.org/10.1242/bio.042259>
- Tardieux I**, Webster P, Ravesloot J, Boron W, Lunn JA, Heuser JE, Andrews NW. 1992. Lysosome recruitment and fusion are early events required for trypanosome invasion of mammalian cells. *Cell* **71**:1117–1130. DOI: [https://doi.org/10.1016/S0092-8674\(05\)80061-3](https://doi.org/10.1016/S0092-8674(05)80061-3), PMID: 1473148
- Tavares NM**, Araújo-Santos T, Afonso L, Nogueira PM, Lopes UG, Soares RP, Bozza PT, Bandeira-Melo C, Borges VM, Brodskyn C. 2014. Understanding the mechanisms controlling *Leishmania amazonensis* infection in vitro: the role of LTB4 derived from human neutrophils. *The Journal of Infectious Diseases* **210**:656–666. DOI: <https://doi.org/10.1093/infdis/jiu158>, PMID: 24634497
- Tewary P**, Veena K, Pucadyil TJ, Chattopadhyay A, Madhubala R. 2006. The sterol-binding antibiotic nystatin inhibits entry of non-opsonized *Leishmania donovani* into macrophages. *Biochemical and Biophysical Research Communications* **339**:661–666. DOI: <https://doi.org/10.1016/j.bbrc.2005.11.062>, PMID: 16310160
- Thylur RP**, Wu X, Gowda NM, Punnath K, Neelgund SE, Febbraio M, Gowda DC. 2017. CD36 receptor regulates malaria-induced immune responses primarily at early blood stage infection contributing to parasitemia control and resistance to mortality. *Journal of Biological Chemistry* **292**:9394–9408. DOI: <https://doi.org/10.1074/jbc.M117.781294>, PMID: 28416609
- Toledo A**, Crowley JT, Coleman JL, LaRocca TJ, Chiantia S, London E, Benach JL. 2014. Selective association of outer surface lipoproteins with the lipid rafts of *Borrelia burgdorferi*. *mBio* **5**:e00899-14. DOI: <https://doi.org/10.1128/mBio.00899-14>, PMID: 24618252

- Toledo A, Monzón JD, Coleman JL, Garcia-Monco JC, Benach JL. 2015a. Hypercholesterolemia and ApoE deficiency result in severe infection with lyme disease and relapsing-fever *Borrelia*. *PNAS* **112**:5491–5496. DOI: <https://doi.org/10.1073/pnas.1502561112>, PMID: 25870274
- Toledo A, Pérez A, Coleman JL, Benach JL. 2015b. The lipid raft proteome of *Borrelia burgdorferi*. *Proteomics* **15**:3662–3675. DOI: <https://doi.org/10.1002/pmic.201500093>, PMID: 26256460
- Toledo DA, Roque NR, Teixeira L, Milán-Garcés EA, Carneiro AB, Almeida MR, Andrade GF, Martins JS, Pinho RR, Freire-de-Lima CG, Bozza PT, D’Avila H, Melo RC. 2016. Lipid body organelles within the parasite *Trypanosoma cruzi*: a role for intracellular arachidonic acid metabolism. *PLOS ONE* **11**:e0160433. DOI: <https://doi.org/10.1371/journal.pone.0160433>, PMID: 27490663
- Toledo A, Huang Z, Coleman JL, London E, Benach JL. 2018. Lipid rafts can form in the inner and outer membranes of *Borrelia burgdorferi* and have different properties and associated proteins. *Molecular Microbiology* **108**:63–76. DOI: <https://doi.org/10.1111/mmi.13914>, PMID: 29377398
- Toledo A, Benach JL. 2015. Hijacking and use of host lipids by intracellular pathogens. *Microbiology Spectrum* **3**:2014. DOI: <https://doi.org/10.1128/microbiolspec.VMBF-0001-2014>
- Trajkovic K, Hsu C, Chiantia S, Rajendran L, Wenzel D, Wieland F, Schwille P, Brügger B, Simons M. 2008. Ceramide triggers budding of exosome vesicles into multivesicular endosomes. *Science* **319**:1244–1247. DOI: <https://doi.org/10.1126/science.1153124>, PMID: 18309083
- Tree MO, Londono-Renteria B, Troupin A, Clark KM, Colpitts TM, Conway MJ. 2019. Dengue virus reduces expression of low-density lipoprotein receptor-related protein 1 to facilitate replication in *Aedes aegypti*. *Scientific Reports* **9**:6352. DOI: <https://doi.org/10.1038/s41598-019-42803-9>, PMID: 31015516
- Uppal K, Salinas JL, Monteiro WM, Val F, Cordy RJ, Liu K, Melo GC, Siqueira AM, Magalhaes B, Galinski MR, Lacerda MVG, Jones DP. 2017. Plasma metabolomics reveals membrane lipids, aspartate/asparagine and nucleotide metabolism pathway differences associated with chloroquine resistance in *Plasmodium vivax* malaria. *PLOS ONE* **12**:e0182819. DOI: <https://doi.org/10.1371/journal.pone.0182819>, PMID: 28813452
- Vaughan AM, O’Neill MT, Tarun AS, Camargo N, Phuong TM, Aly AS, Cowman AF, Kappe SH. 2009. Type II fatty acid synthesis is essential only for malaria parasite late liver stage development. *Cellular Microbiology* **11**:506–520. DOI: <https://doi.org/10.1111/j.1462-5822.2008.01270.x>, PMID: 19068099
- Verhey TB, Castellanos M, Chaconas G. 2018. Antigenic variation in the lyme spirochete: insights into recombinational switching with a suggested role for Error-Prone repair. *Cell Reports* **23**:2595–2605. DOI: <https://doi.org/10.1016/j.celrep.2018.04.117>, PMID: 29847791
- Vial T, Tan WL, Wong Wei Xiang B, Missé D, Deharo E, Marti G, Pompon J. 2019. Dengue virus reduces AGPAT1 expression to alter phospholipids and enhance infection in *Aedes aegypti*. *PLOS Pathogens* **15**:e1008199. DOI: <https://doi.org/10.1371/journal.ppat.1008199>, PMID: 31815960
- Vieira CB, Praça YR, Bentes K, Santiago PB, Silva SMM, Silva GDS, Motta FN, Bastos IMD, de Santana JM, de Araújo CN. 2018. Triatomines: trypanosomatids, bacteria, and viruses potential vectors? *Frontiers in Cellular and Infection Microbiology* **8**:405. DOI: <https://doi.org/10.3389/fcimb.2018.00405>, PMID: 30505806
- Villar M, López V, Ayllón N, Cabezas-Cruz A, López JA, Vázquez J, Alberdi P, de la Fuente J. 2016. The intracellular bacterium *Anaplasma phagocytophilum* selectively manipulates the levels of vertebrate host proteins in the tick vector *Ixodes scapularis*. *Parasites & Vectors* **9**:467. DOI: <https://doi.org/10.1186/s13071-016-1747-3>, PMID: 27561965
- von Lackum K, Miller JC, Bykowski T, Riley SP, Woodman ME, Brade V, Kraiczy P, Stevenson B, Wallich R. 2005. *Borrelia burgdorferi* regulates expression of complement regulator-acquiring surface protein 1 during the mammal-tick infection cycle. *Infection and Immunity* **73**:7398–7405. DOI: <https://doi.org/10.1128/IAI.73.11.7398-7405.2005>, PMID: 16239539
- Voorheis HP. 1980. Fatty acid uptake by bloodstream forms of *Trypanosoma brucei* and other species of the kinetoplastida. *Molecular and Biochemical Parasitology* **1**:177–186. DOI: [https://doi.org/10.1016/0166-6851\(80\)90016-X](https://doi.org/10.1016/0166-6851(80)90016-X), PMID: 7442716
- Waarts BL, Bittman R, Wilschut J. 2002. Sphingolipid and cholesterol dependence of Alphavirus membrane fusion lack of correlation with lipid raft formation in target liposomes. *The Journal of Biological Chemistry* **277**:38141–38147. DOI: <https://doi.org/10.1074/jbc.M206998200>, PMID: 12138173
- Wainszelbaum MJ, Belaunzarán ML, Lammel EM, Florin-Christensen M, Florin-Christensen J, Isola EL. 2003. Free fatty acids induce cell differentiation to infective forms in *Trypanosoma cruzi*. *Biochemical Journal* **375**:705–712. DOI: <https://doi.org/10.1042/bj20021907>, PMID: 12887332
- Walter L, Sürth V, Röttgerding F, Zipfel PF, Fritz-Wolf K, Kraiczy P. 2019. Elucidating the immune evasion mechanisms of *Borrelia mayonii*, the Causative Agent of Lyme Disease. *Frontiers in Immunology* **10**:2722. DOI: <https://doi.org/10.3389/fimmu.2019.02722>, PMID: 31849943
- Wang XG, Scagliotti JP, Hu LT. 2004. Phospholipid synthesis in *Borrelia burgdorferi*: BB0249 and BB0721 encode functional phosphatidylcholine synthase and phosphatidylglycerolphosphate synthase proteins. *Microbiology* **150**:391–397. DOI: <https://doi.org/10.1099/mic.0.26752-0>, PMID: 14766917
- Wein S, Ghezal S, Buré C, Maynadier M, Périgaud C, Vial HJ, Lefebvre-Tournier I, Wengelnik K, Cerdan R. 2018. Contribution of the precursors and interplay of the pathways in the phospholipid metabolism of the malaria parasite. *Journal of Lipid Research* **59**:1461–1471. DOI: <https://doi.org/10.1194/jlr.M085589>, PMID: 29853527
- Welsch S, Miller S, Romero-Brey I, Merz A, Bleck CK, Walther P, Fuller SD, Antony C, Krijnse-Locker J, Bartenschlager R. 2009. Composition and three-dimensional architecture of the dengue virus replication and assembly sites. *Cell Host & Microbe* **5**:365–375. DOI: <https://doi.org/10.1016/j.chom.2009.03.007>, PMID: 19380115

- Werling K, Shaw WR, Itoe MA, Westervelt KA, Marcenac P, Paton DG, Peng D, Singh N, Smidler AL, South A, Deik AA, Mancio-Silva L, Demas AR, March S, Calvo E, Bhatia SN, Clish CB, Catteruccia F. 2019. Steroid hormone function controls Non-competitive *Plasmodium* Development in *Anopheles*. *Cell* **177**:315–325. DOI: <https://doi.org/10.1016/j.cell.2019.02.036>, PMID: 30929905
- WHO. 2020. *Vector-Borne Diseases*: WHO.
- Wichit S, Hamel R, Bernard E, Talignani L, Diop F, Ferraris P, Liegeois F, Ekcharyawat P, Luplertlop N, Surasombatpattana P, Thomas F, Merits A, Choumet V, Roques P, Yssel H, Briant L, Missé D. 2017. Imipramine inhibits Chikungunya virus replication in human skin fibroblasts through interference with intracellular cholesterol trafficking. *Scientific Reports* **7**:3145. DOI: <https://doi.org/10.1038/s41598-017-03316-5>, PMID: 28600536
- Wilder HK, Raffel SJ, Barbour AG, Porcella SF, Sturdevant DE, Vaisvil B, Kapatral V, Schmitt DP, Schwan TG, Lopez JE. 2016. Transcriptional profiling the 150 kb linear megaplasmid of *Borrelia turicatae* suggests a role in vector colonization and initiating mammalian infection. *PLOS ONE* **11**:e0147707. DOI: <https://doi.org/10.1371/journal.pone.0147707>, PMID: 26845332
- Winter G, Fuchs M, McConville MJ, Stierhof YD, Overath P. 1994. Surface antigens of *Leishmania mexicana* amastigotes: characterization of glycoinositol phospholipids and a macrophage-derived glycosphingolipid. *Journal of Cell Science* **107** (Pt 9):2471–2482. PMID: 7844164
- Xiong Q, Wang X, Rikihisa Y. 2007. High-cholesterol diet facilitates *Anaplasma phagocytophilum* infection and up-regulates macrophage inflammatory protein-2 and CXCR2 expression in apolipoprotein E-deficient mice. *The Journal of Infectious Diseases* **195**:1497–1503. DOI: <https://doi.org/10.1086/514819>, PMID: 17436230
- Xiong Q, Lin M, Rikihisa Y. 2009. Cholesterol-dependent *Anaplasma phagocytophilum* exploits the low-density lipoprotein uptake pathway. *PLOS Pathogens* **5**:e1000329. DOI: <https://doi.org/10.1371/journal.ppat.1000329>, PMID: 19283084
- Xiong Q, Lin M, Huang W, Rikihisa Y. 2019. Infection by *Anaplasma phagocytophilum* requires recruitment of Low-Density lipoprotein cholesterol by flotillins. *mBio* **10**:e02783-18. DOI: <https://doi.org/10.1128/mBio.02783-18>, PMID: 30914515
- Xiong Q, Rikihisa Y. 2012. Subversion of NPC1 pathway of cholesterol transport by *Anaplasma phagocytophilum*. *Cellular Microbiology* **14**:560–576. DOI: <https://doi.org/10.1111/j.1462-5822.2011.01742.x>, PMID: 22212234
- Xu D, Yin C, Wang S, Xiao Y. 2013. JAK-STAT in lipid metabolism of adipocytes. *Jak-Stat* **2**:e27203. DOI: <https://doi.org/10.4161/jkst.27203>, PMID: 24498541
- Yanagihara Y, Kamisango K, Yasuda S, Kobayashi S, Mifuchi I, Azuma I, Yamamura Y, Johnson RC. 1984. Chemical compositions of cell walls and polysaccharide fractions of spirochetes. *Microbiology and Immunology* **28**:535–544. DOI: <https://doi.org/10.1111/j.1348-0421.1984.tb00706.x>, PMID: 6472134
- Yu M, Kumar TR, Nkrumah LJ, Coppi A, Retzlaff S, Li CD, Kelly BJ, Moura PA, Lakshmanan V, Freundlich JS, Valderramos JC, Vilcheze C, Siedner M, Tsai JH, Falkard B, Sidhu AB, Purcell LA, Gratraud P, Kremer L, Waters AP, et al. 2008. The fatty acid biosynthesis enzyme FabI plays a key role in the development of liver-stage malarial parasites. *Cell Host & Microbe* **4**:567–578. DOI: <https://doi.org/10.1016/j.chom.2008.11.001>, PMID: 19064257
- Zhang JR, Hardham JM, Barbour AG, Norris SJ. 1997. Antigenic variation in lyme disease borreliae by promiscuous recombination of VMP-like sequence cassettes. *Cell* **89**:275–285. DOI: [https://doi.org/10.1016/S0092-8674\(00\)80206-8](https://doi.org/10.1016/S0092-8674(00)80206-8), PMID: 9108482
- Zhang K, Hsu FF, Scott DA, Docampo R, Turk J, Beverley SM. 2005. *Leishmania* salvage and remodelling of host sphingolipids in amastigote survival and acidocalcisome biogenesis. *Molecular Microbiology* **55**:1566–1578. DOI: <https://doi.org/10.1111/j.1365-2958.2005.04493.x>, PMID: 15720561
- Zhang K, Bangs JD, Beverley SM. 2010. Sphingolipids in parasitic protozoa. *Advances in Experimental Medicine and Biology* **688**:238–248. DOI: https://doi.org/10.1007/978-1-4419-6741-1_17, PMID: 20919659
- Zhang J, Lan Y, Li MY, Lamers MM, Fusade-Boyer M, Klemm E, Thiele C, Ashour J, Sanyal S. 2018. Flaviviruses exploit the lipid droplet protein AUP1 to trigger lipophagy and drive virus production. *Cell Host & Microbe* **23**:819–831. DOI: <https://doi.org/10.1016/j.chom.2018.05.005>, PMID: 29902443
- Zhang K, Beverley SM. 2010. Phospholipid and sphingolipid metabolism in *Leishmania*. *Molecular and Biochemical Parasitology* **170**:55–64. DOI: <https://doi.org/10.1016/j.molbiopara.2009.12.004>, PMID: 20026359
- Zhang JR, Norris SJ. 1998. Genetic variation of the *Borrelia burgdorferi* gene vlsE involves cassette-specific, segmental gene conversion. *Infection and Immunity* **66**:3698–3704. DOI: <https://doi.org/10.1128/IAI.66.8.3698-3704.1998>, PMID: 9673251
- Zheng L, Lin Y, Lu S, Zhang J, Bogdanov M. 2017. Biogenesis, transport and remodeling of lysophospholipids in Gram-negative Bacteria. *Biochimica Et Biophysica Acta (BBA) - Molecular and Cell Biology of Lipids* **1862**:1404–1413. DOI: <https://doi.org/10.1016/j.bbalip.2016.11.015>, PMID: 27956138