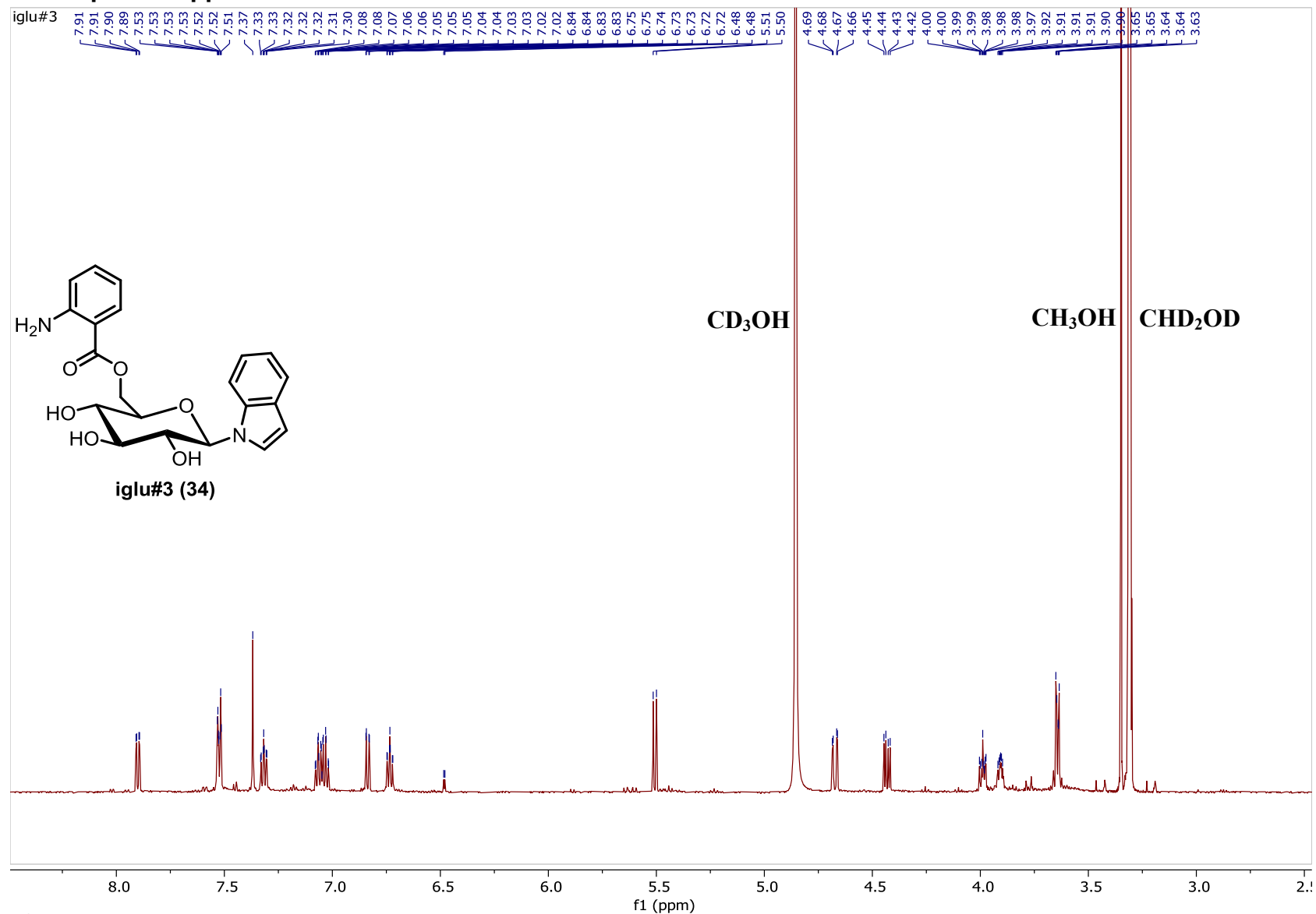
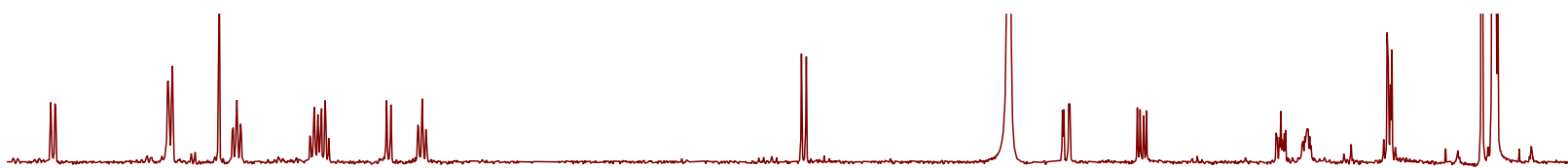


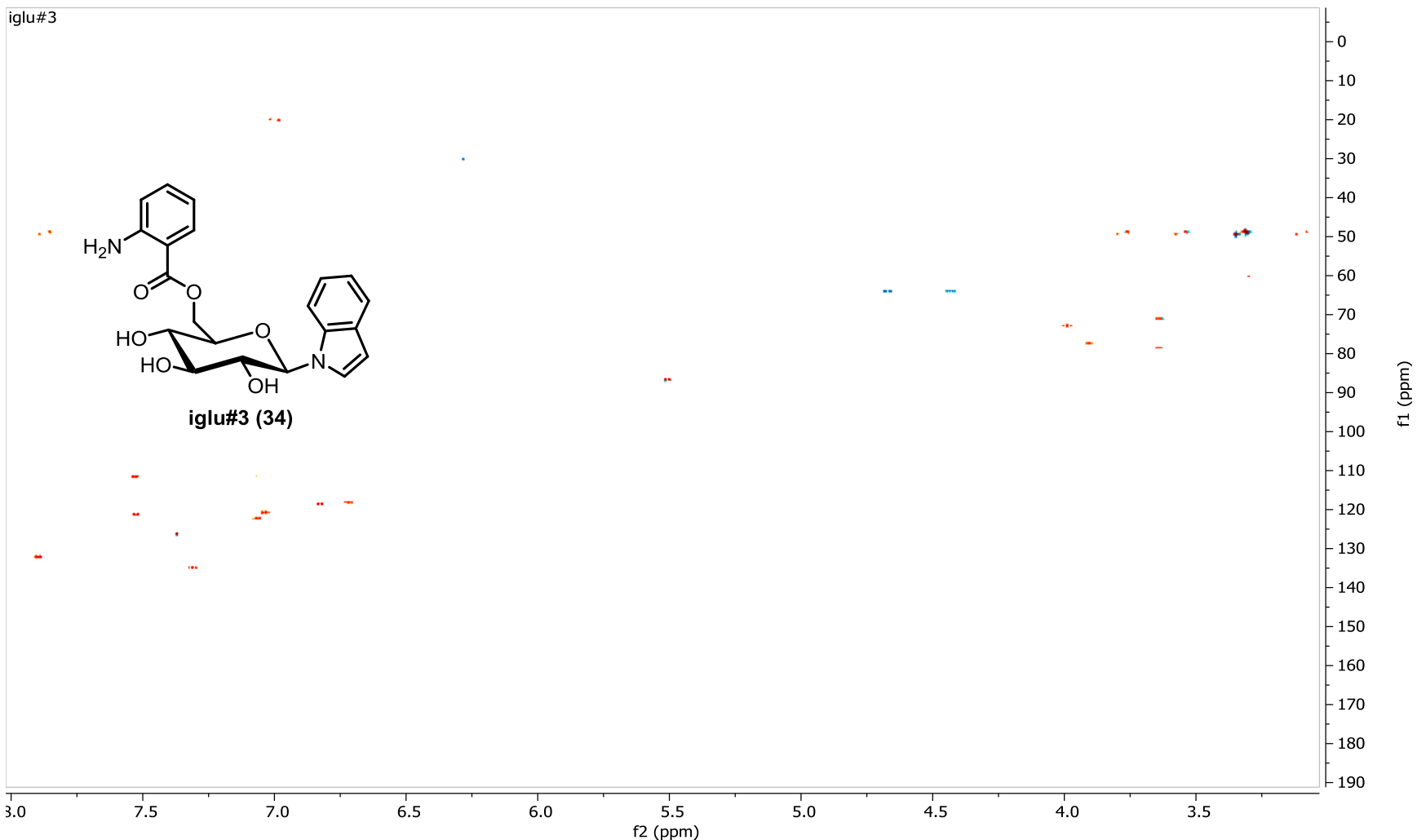
NMR Spectra Appendix



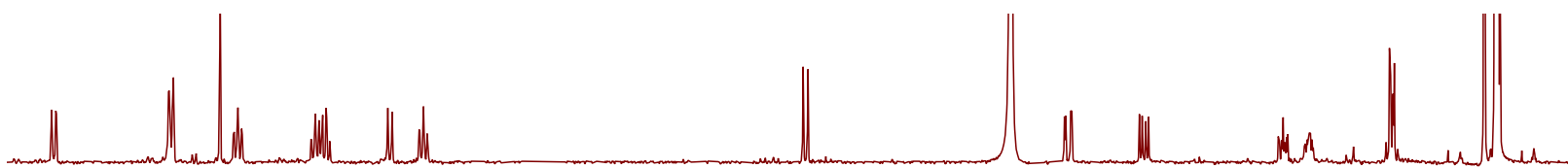
¹H NMR spectrum (600 MHz) of iglu#3 (**34**) in methanol-*d*₄.



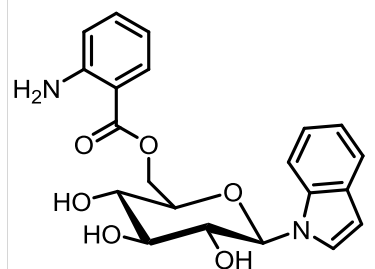
iglu#3



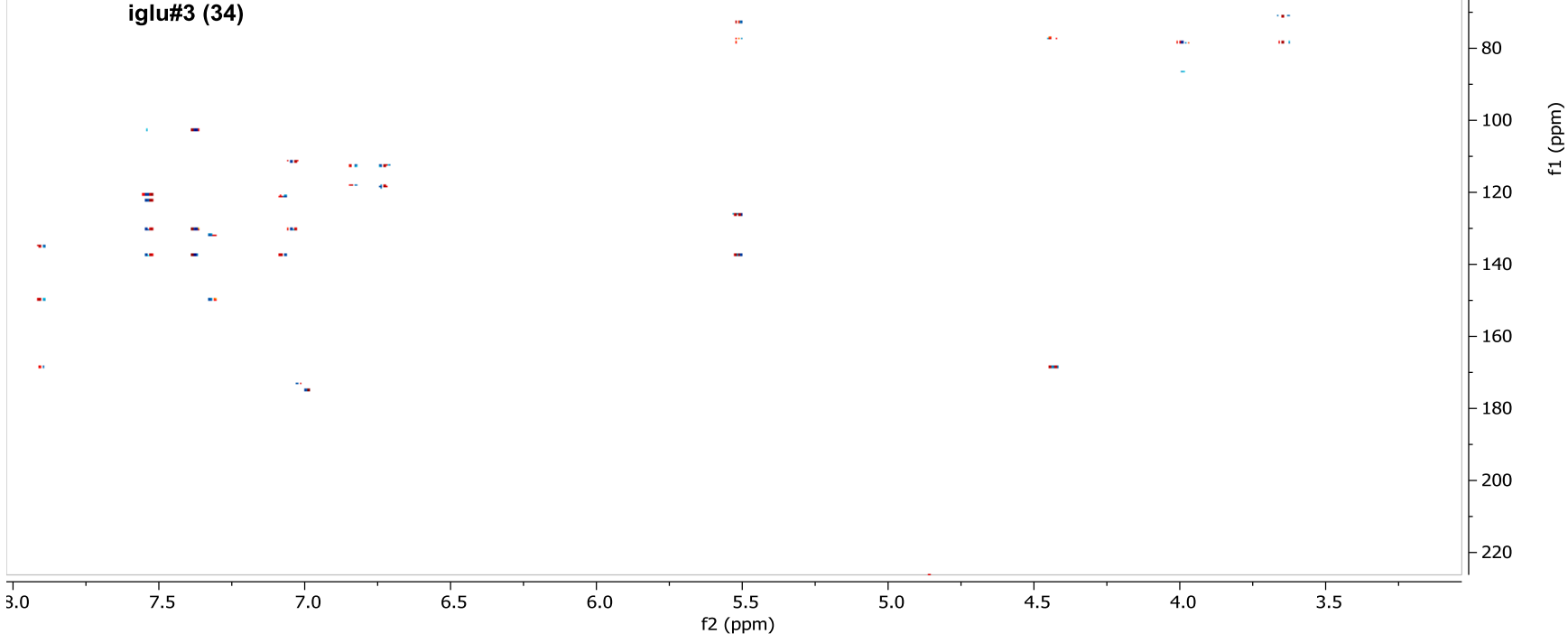
HSQC spectrum (600 MHz) of iglu#3 (**34**) in methanol- d_4 .



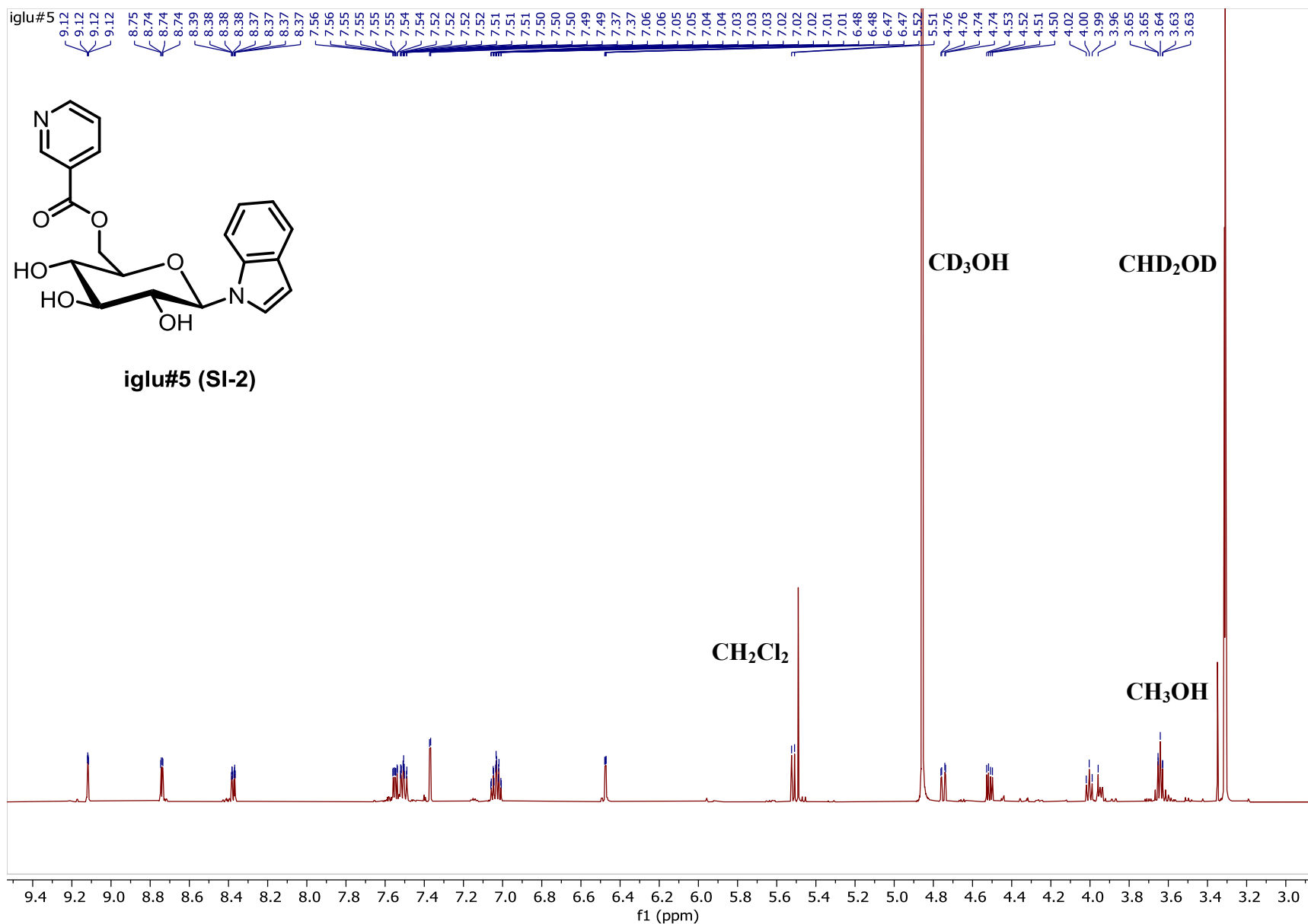
iglu#3



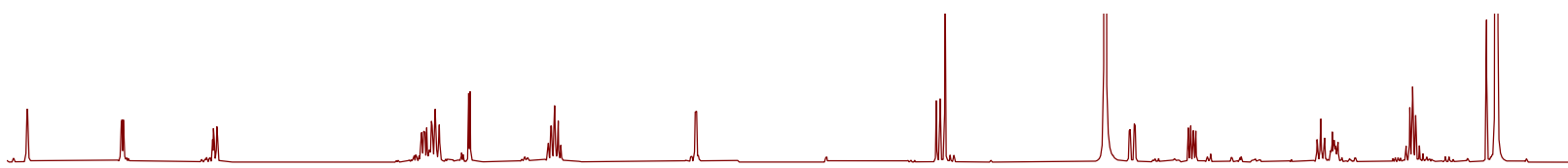
iglu#3 (34)



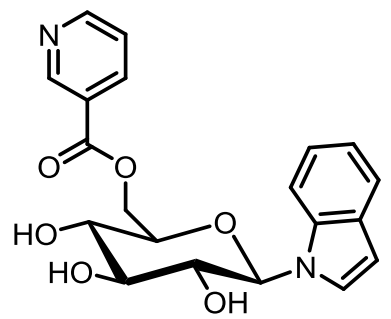
HMBC spectrum (600 MHz) of iglu#3 (**34**) in methanol-*d*₄.



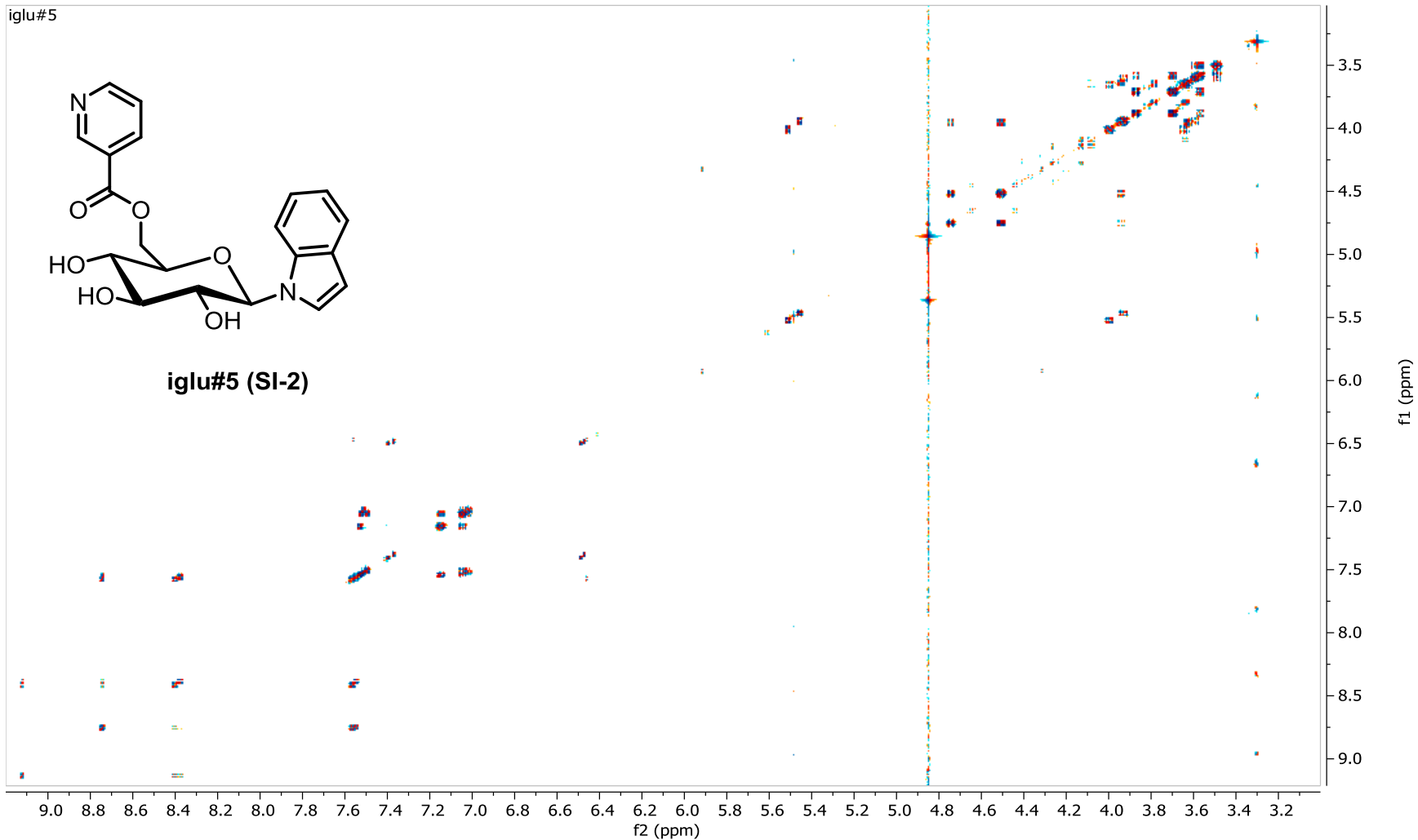
¹H NMR spectrum (600 MHz) of iglu#5 (SI-2) in methanol-*d*₄.



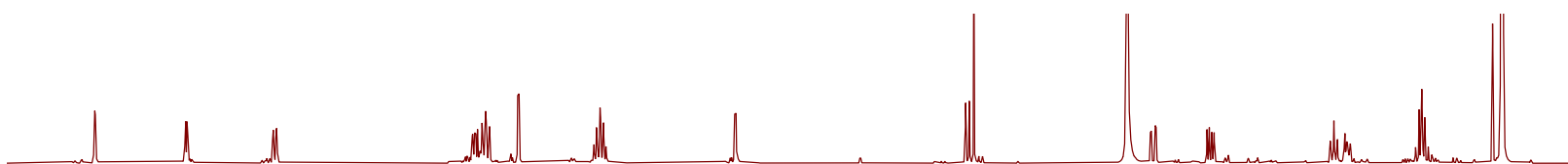
iglu#5



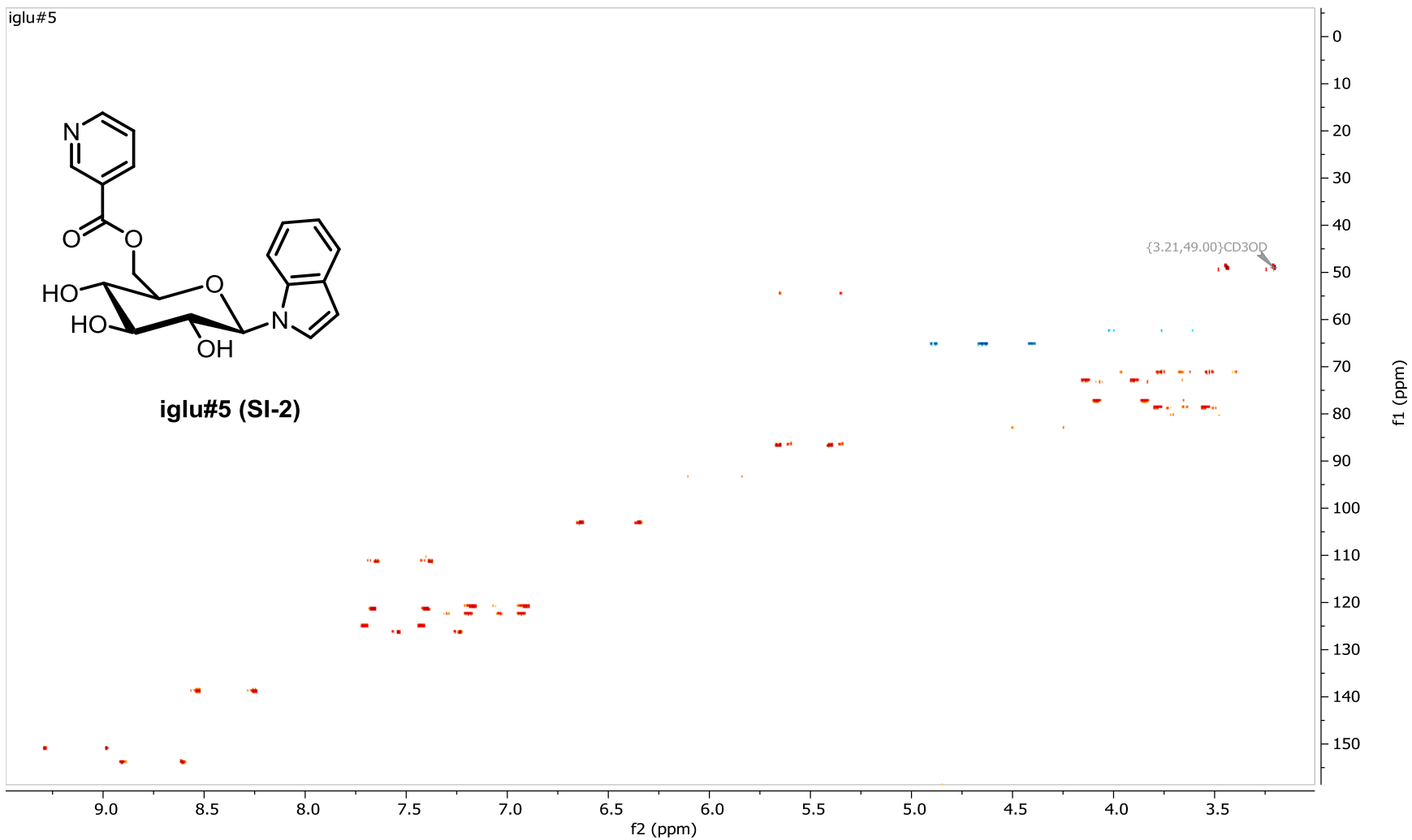
iglu#5 (SI-2)



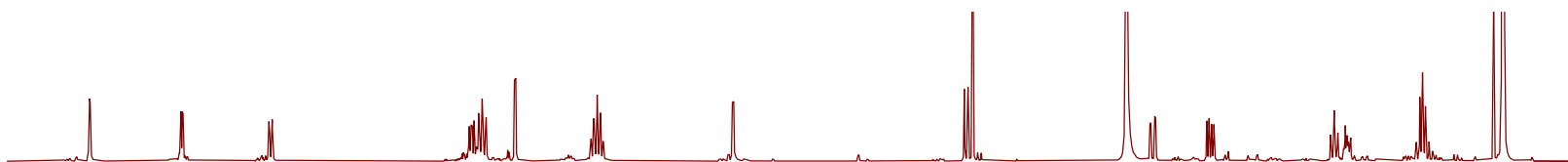
dqfCOSY spectrum (600 MHz) of iglu#5 (SI-2) in methanol- d_4 .



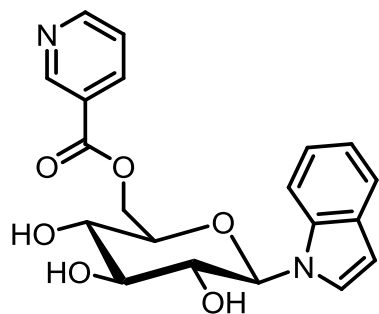
iglu#5



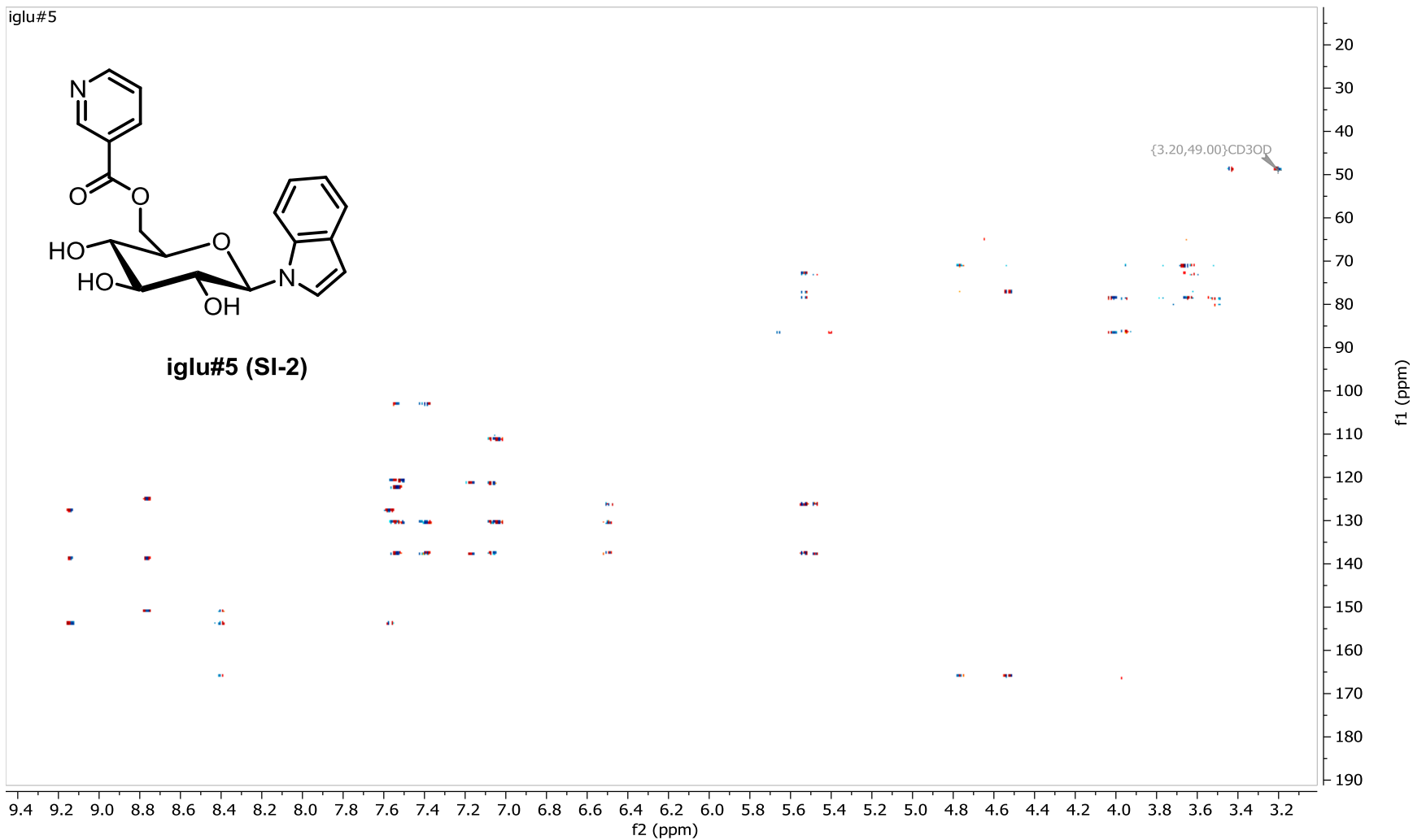
HSQC spectrum (600 MHz) of iglu#5 (SI-2) in methanol- d_4 .



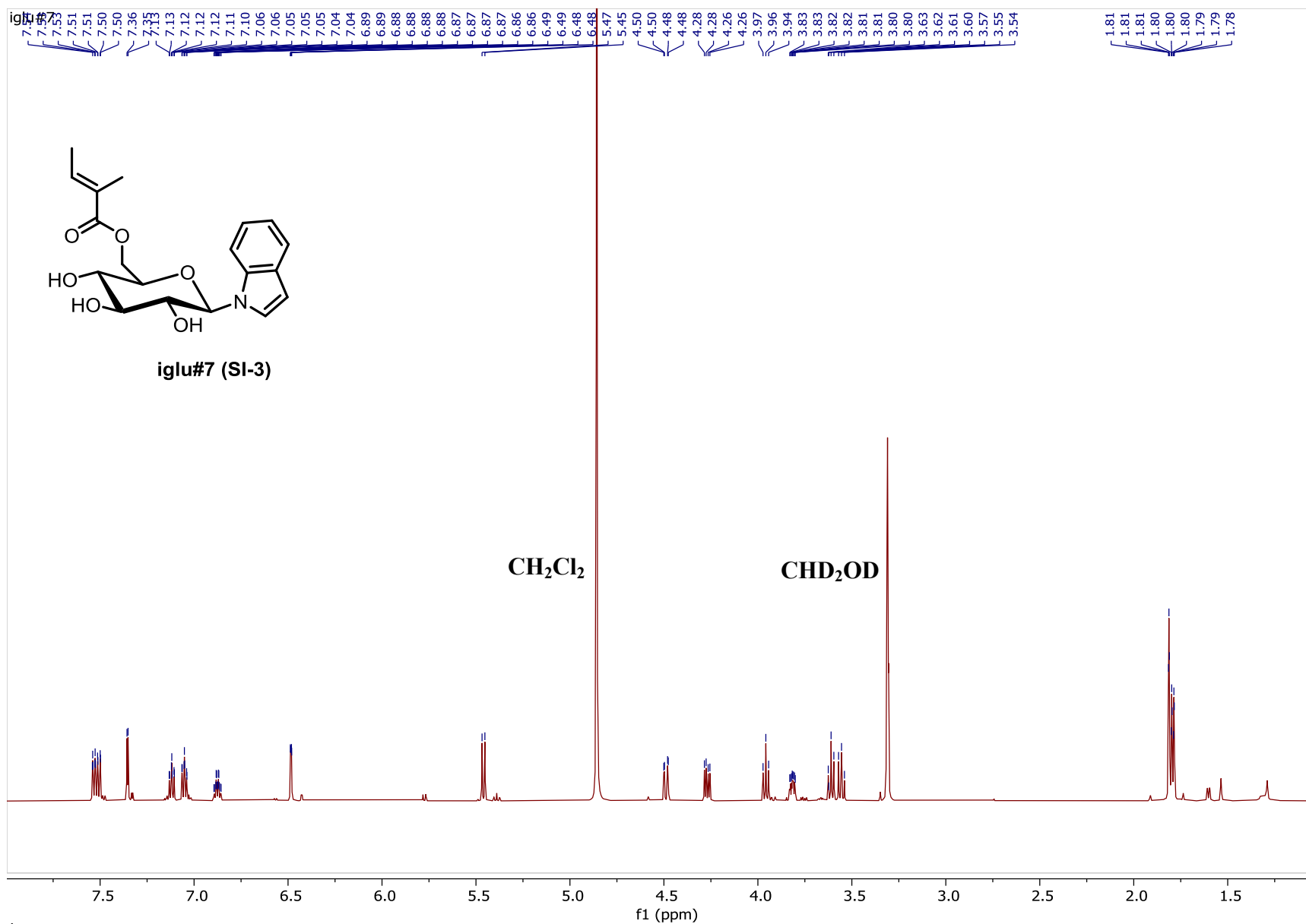
iglu#5



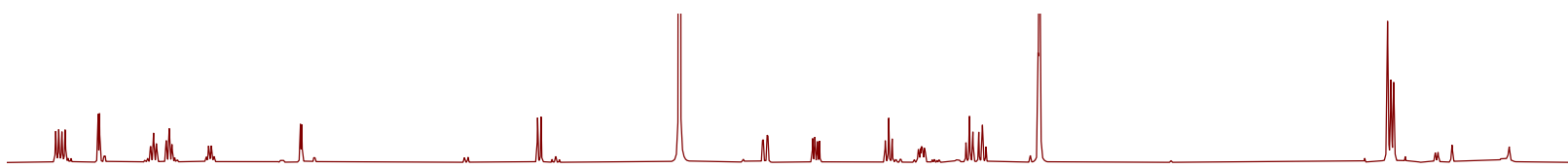
iglu#5 (SI-2)



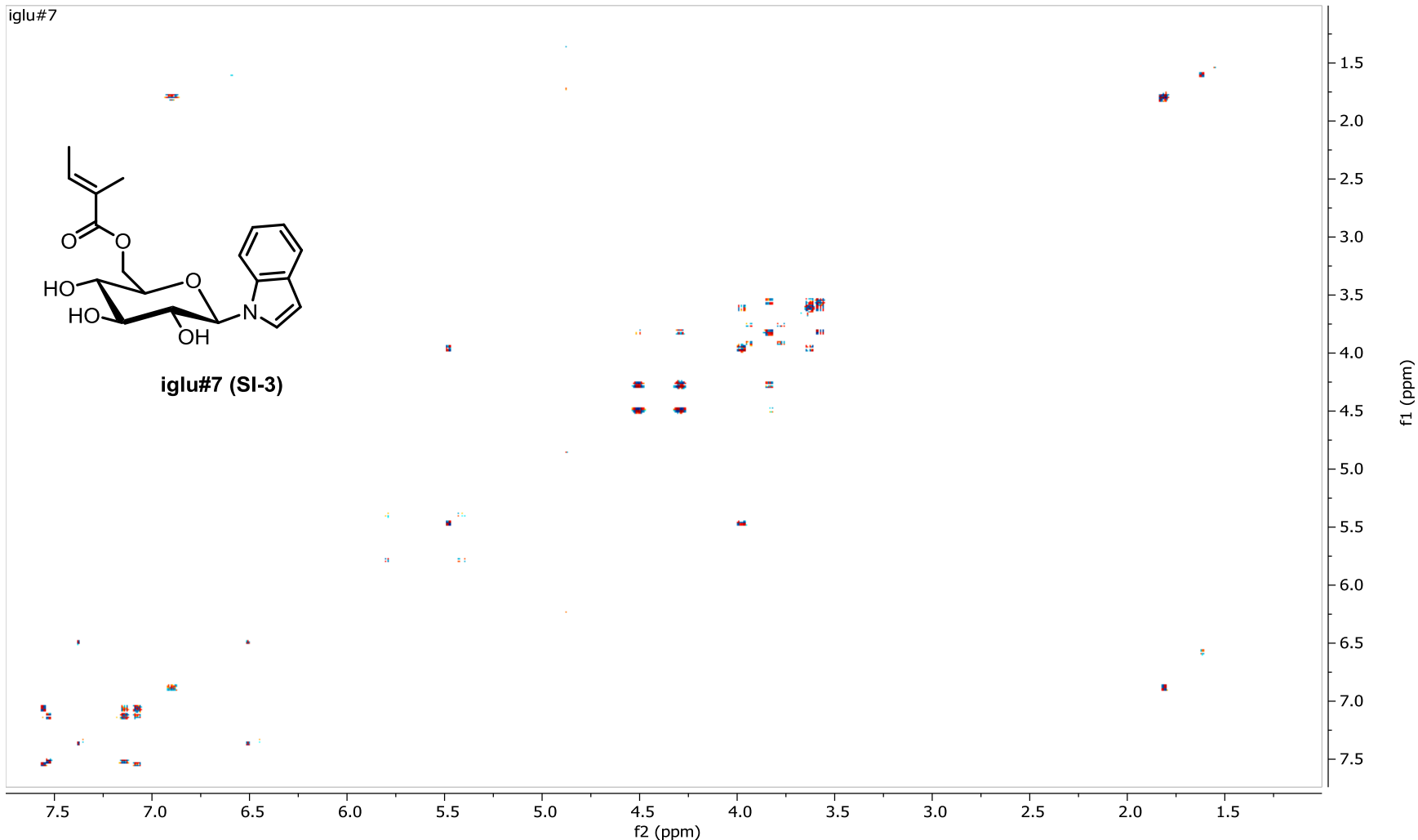
HMBC spectrum (600 MHz) of iglu#5 (**SI-2**) in methanol- d_4 .



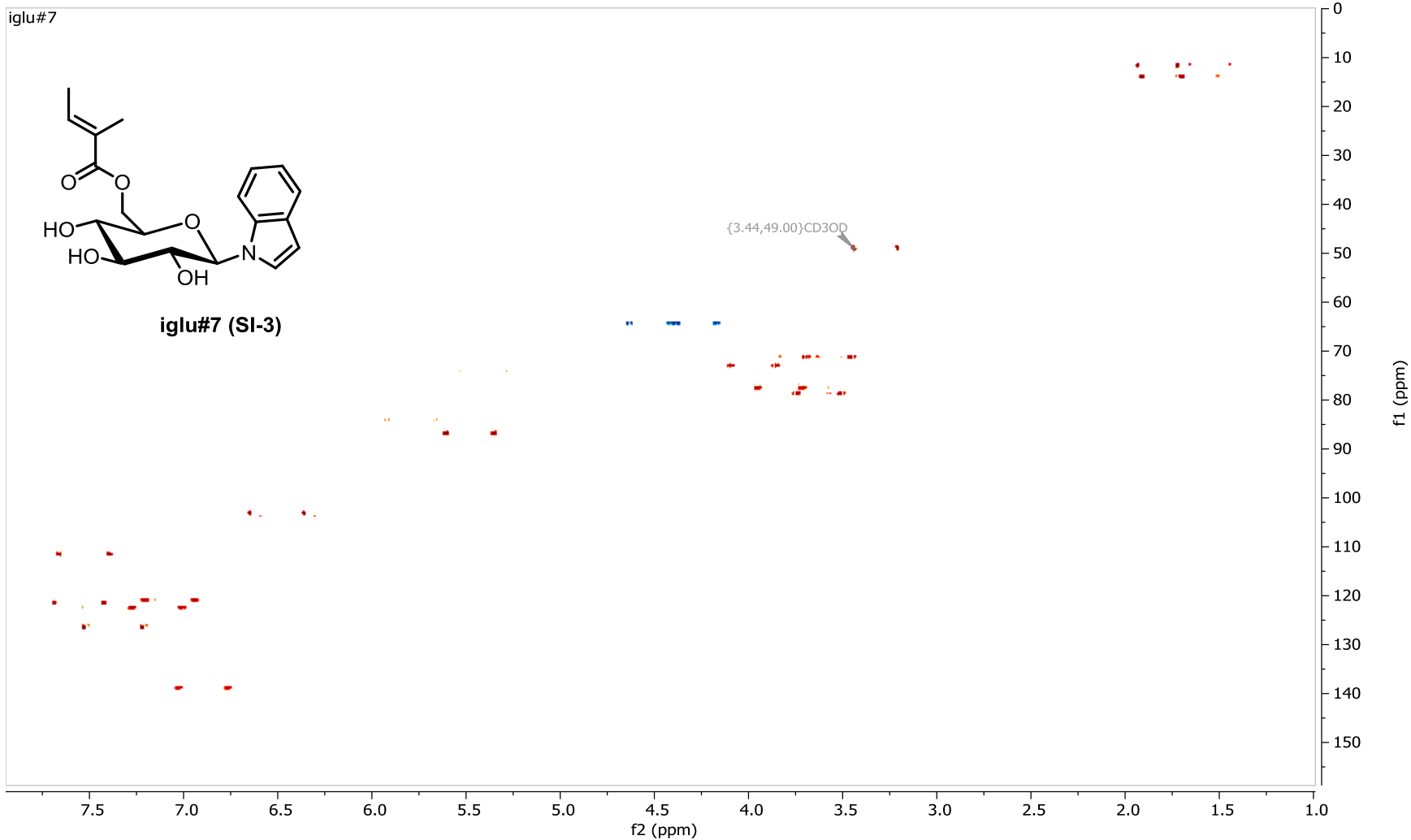
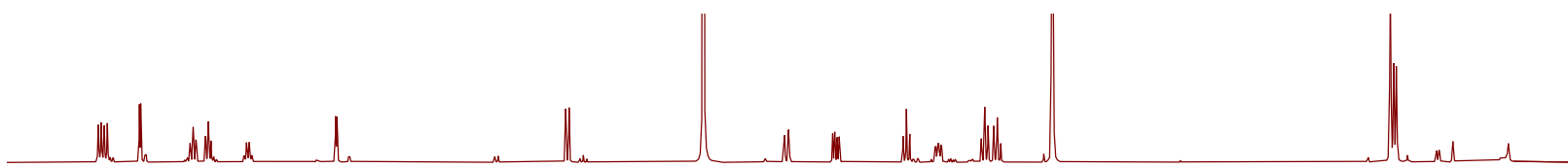
¹H NMR spectrum (600 MHz) of iglu#7 (SI-3) in methanol-*d*₄.



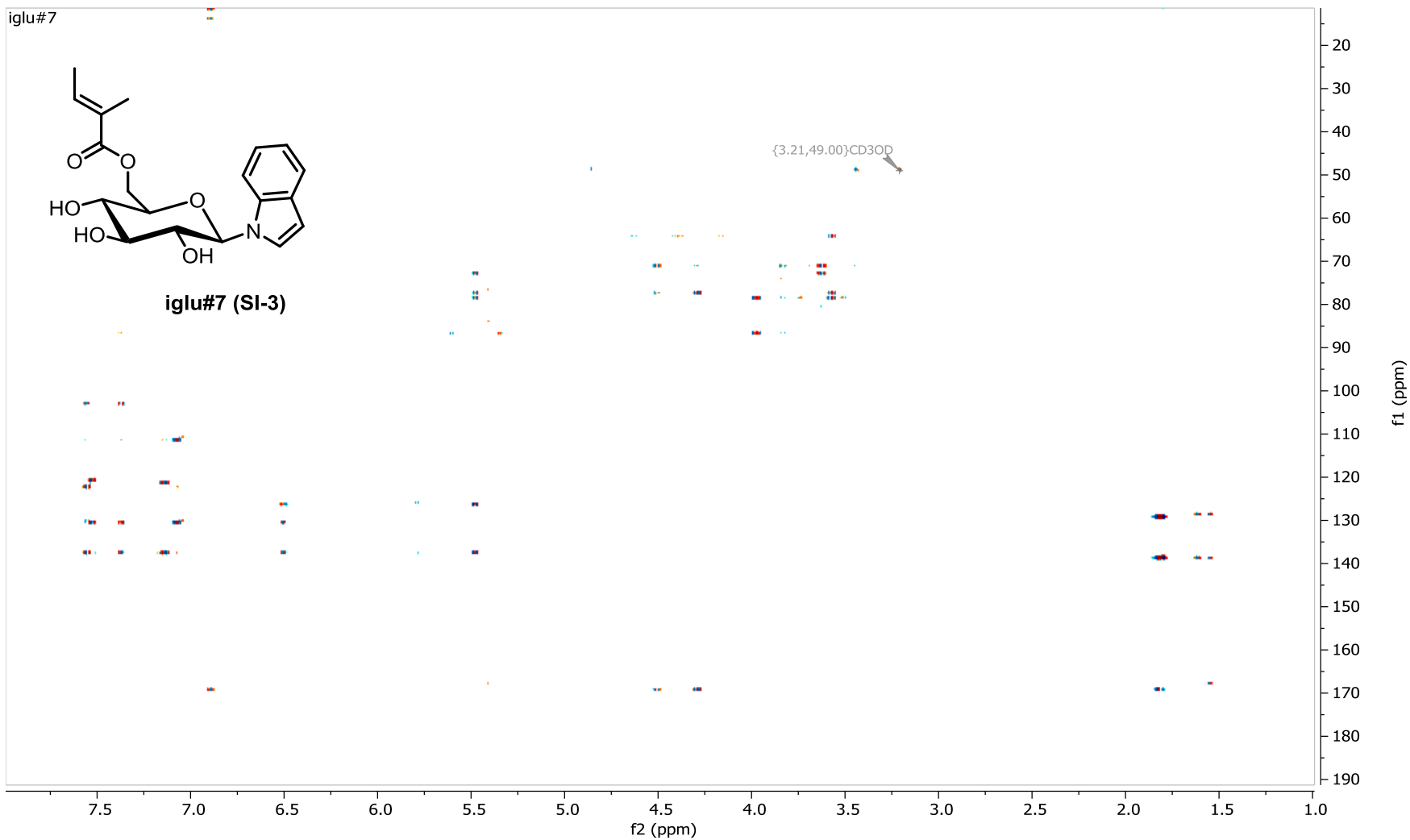
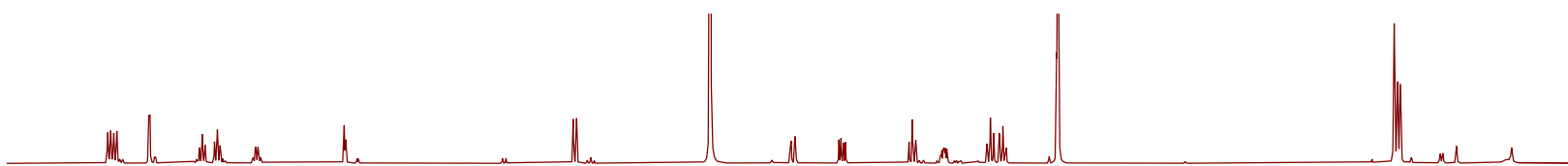
iglu#7



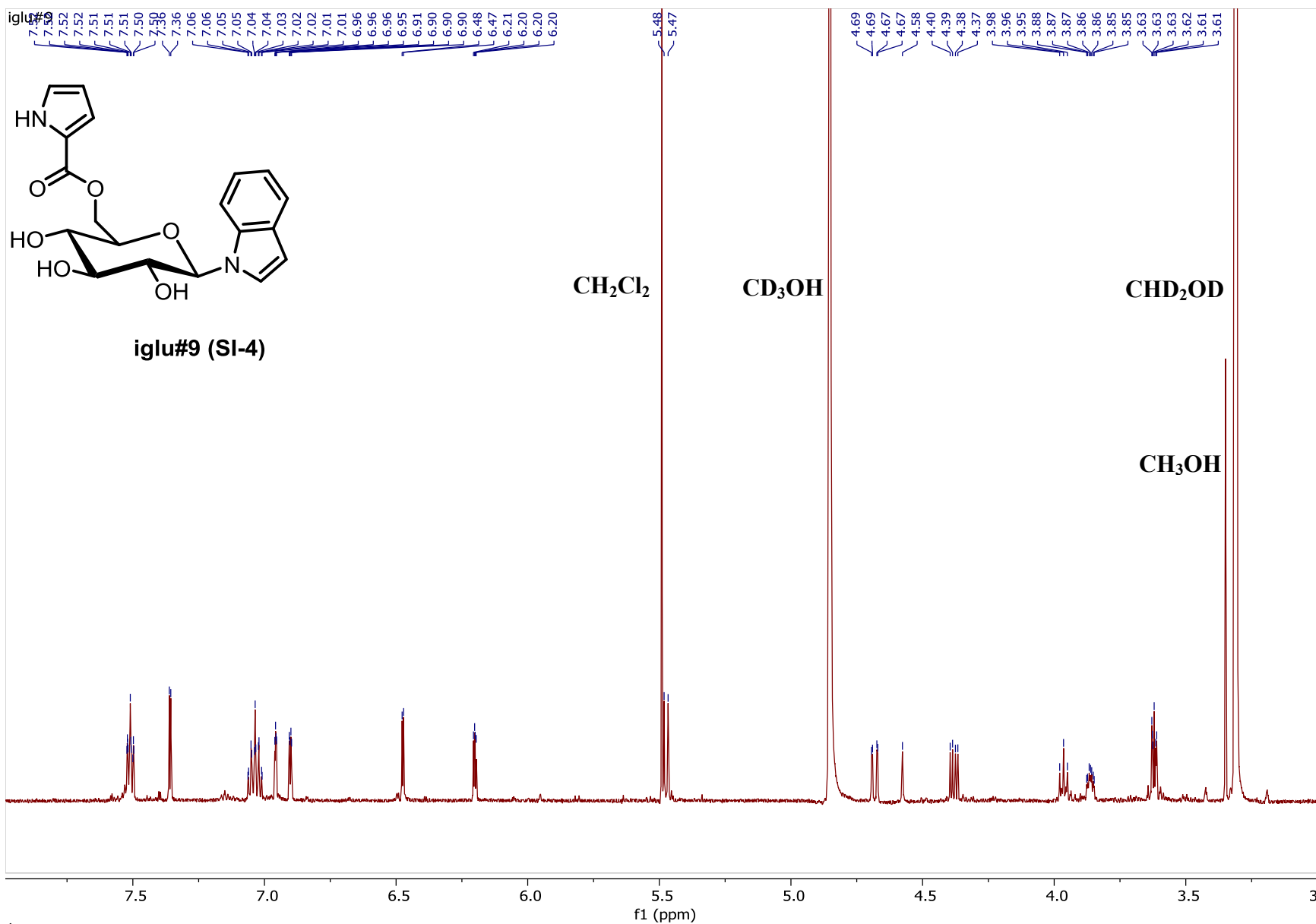
dqfCOSY spectrum (600 MHz) of iglu#7 (**SI-3**) in methanol- d_4 .



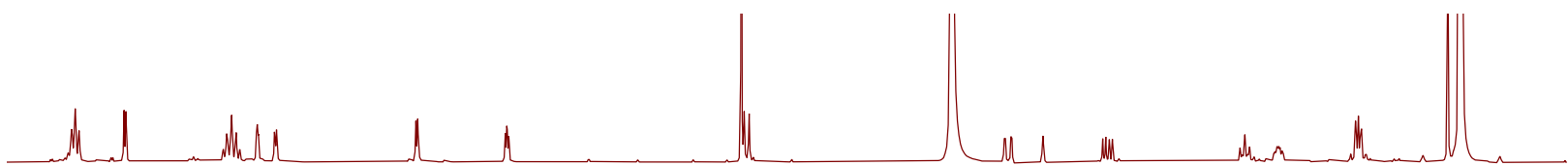
HSQC spectrum (600 MHz) of iglu#7 (SI-3) in methanol- d_4 .



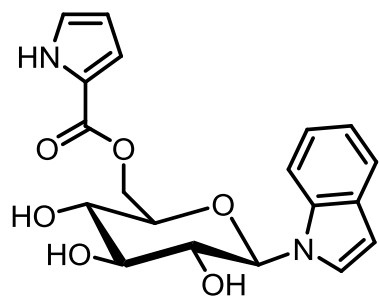
HMBC spectrum (600 MHz) of iglu#7 (SI-3) in methanol- d_4 .



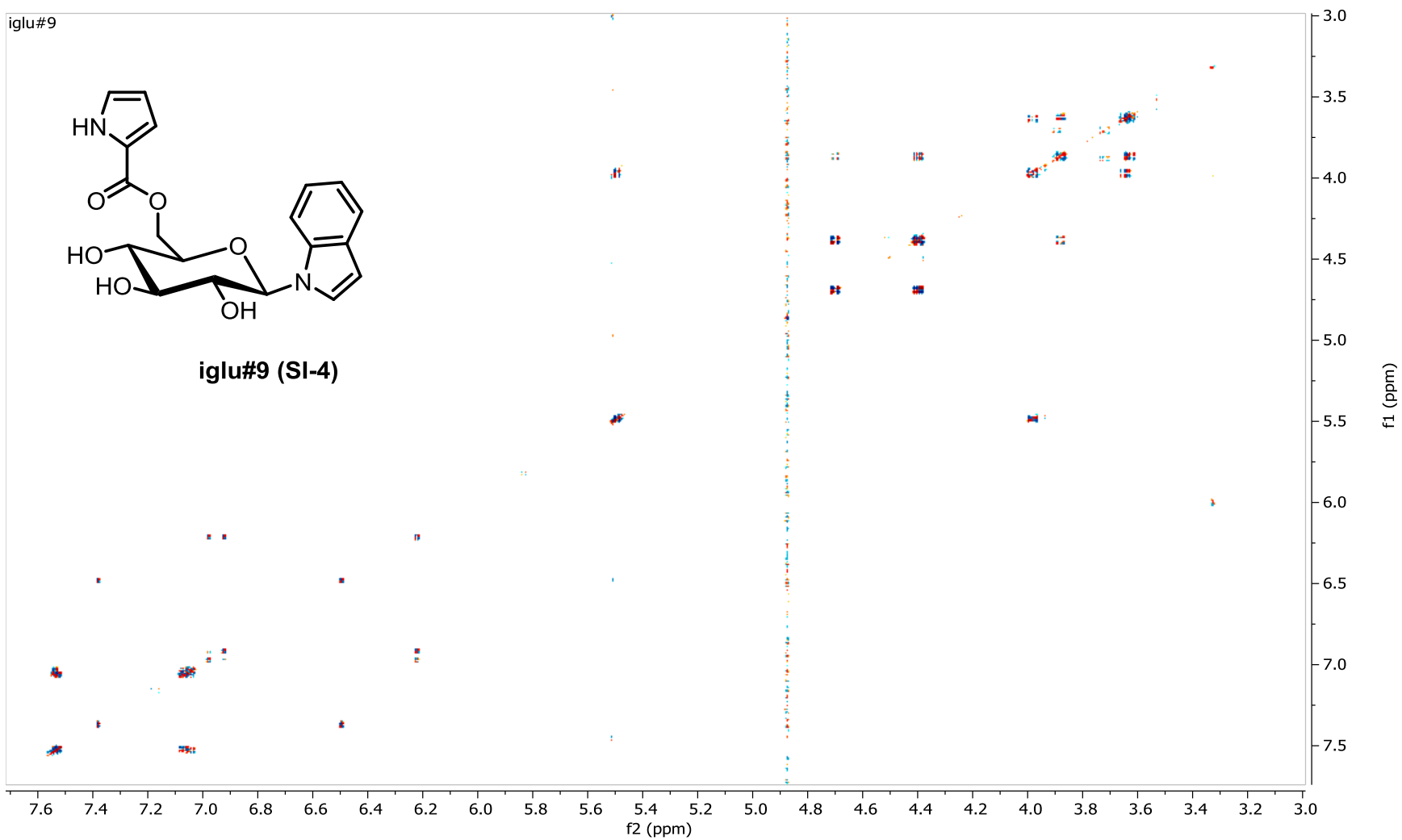
¹H NMR spectrum (600 MHz) of iglu#9 (SI-4) in methanol-*d*₄.



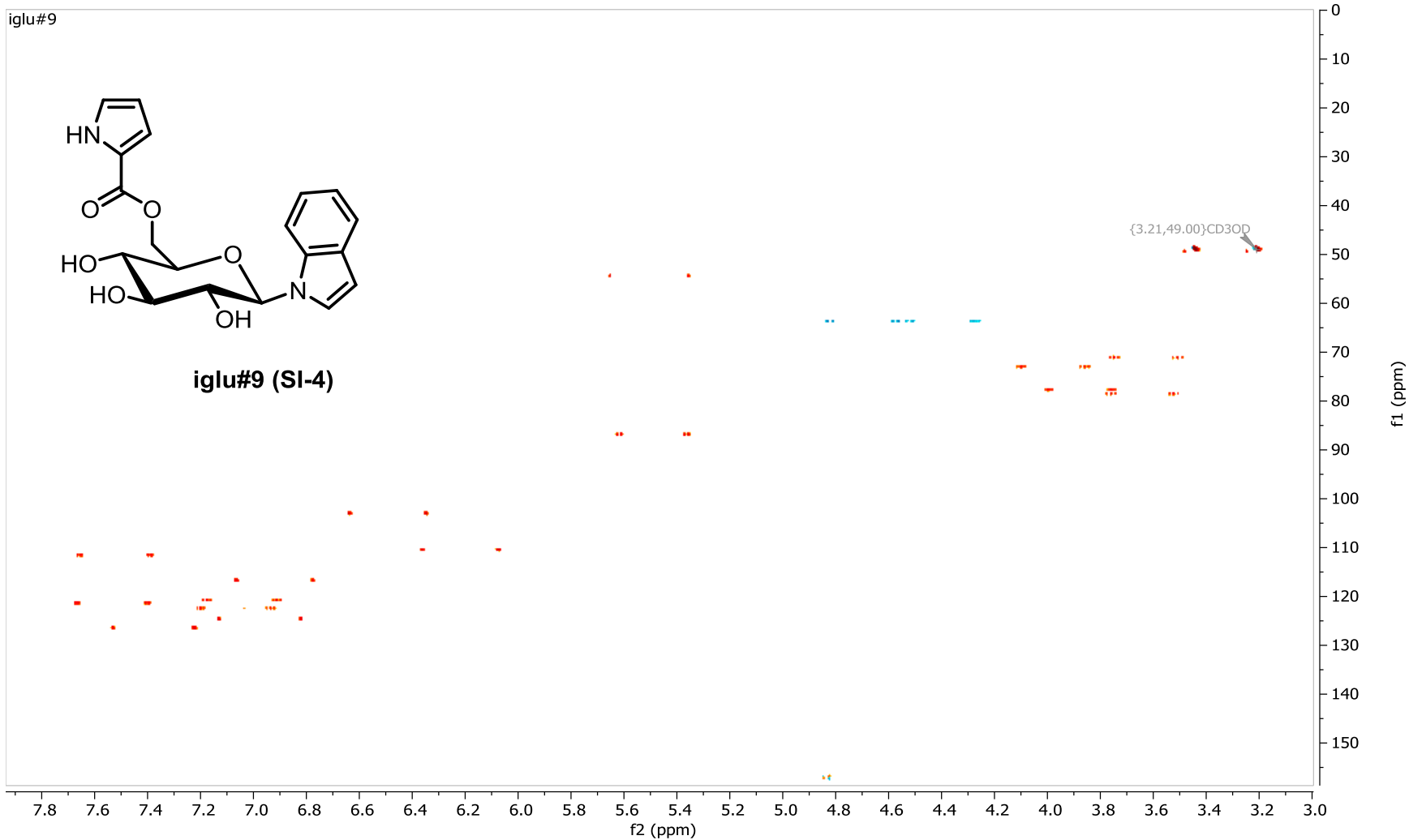
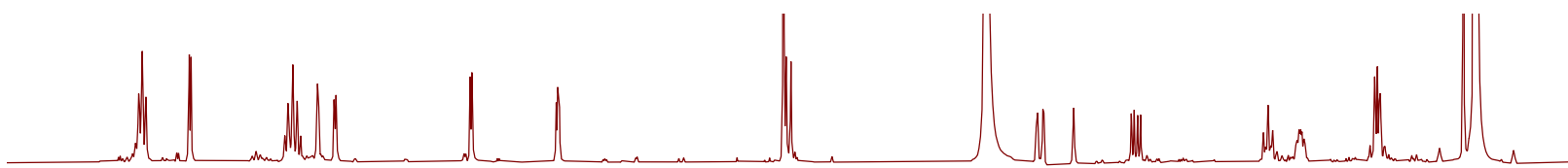
iglu#9



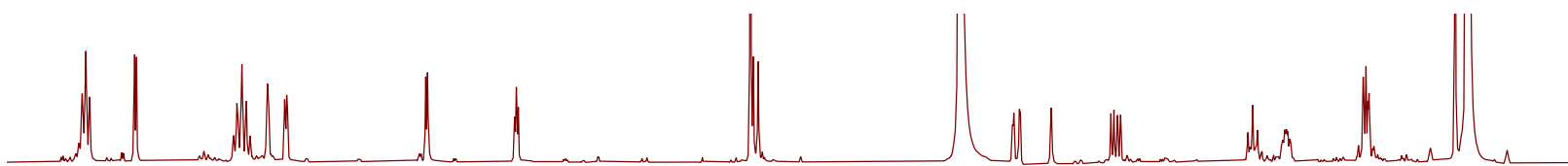
iglu#9 (SI-4)



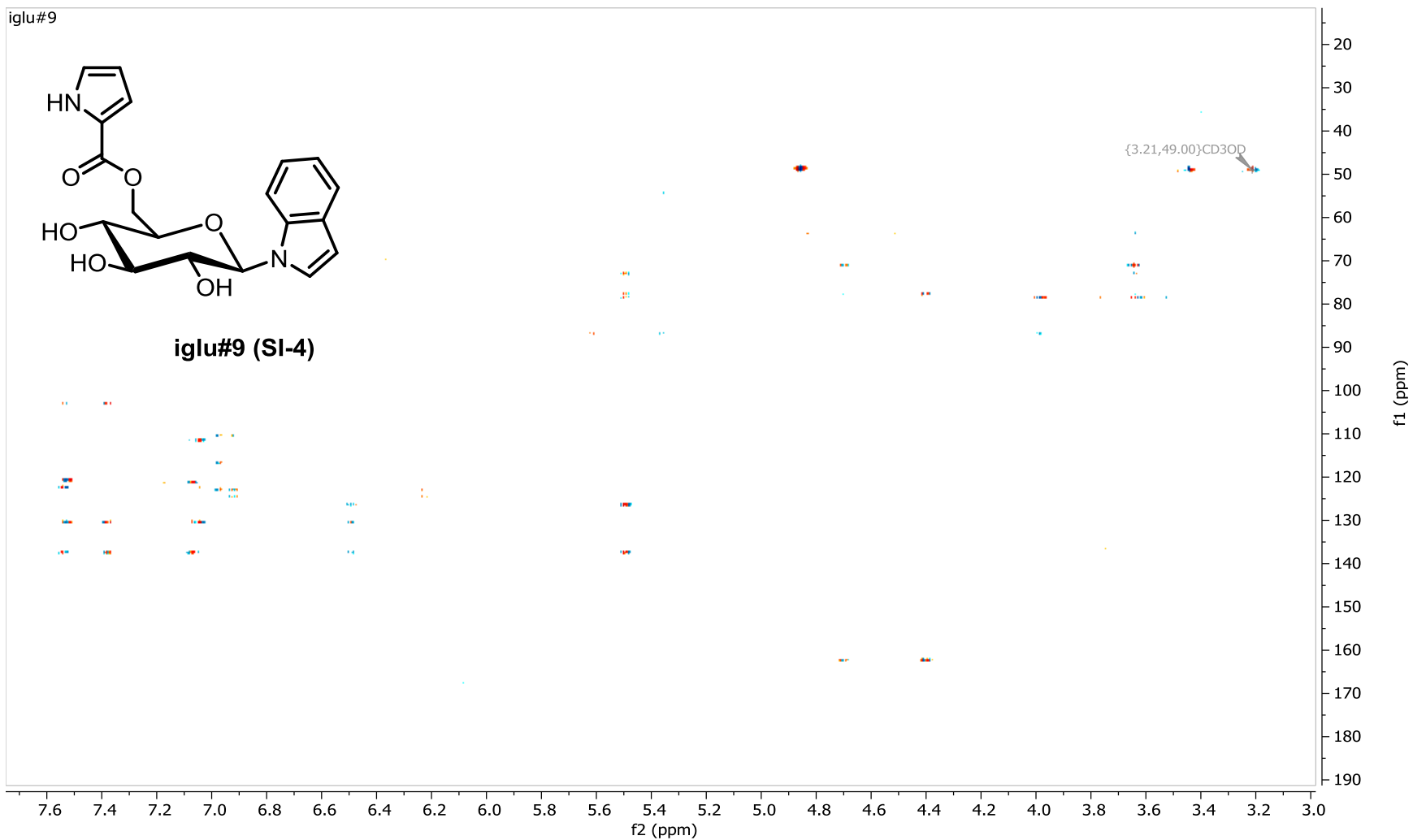
dqfCOSY spectrum (600 MHz) of iglu#9 (SI-4) in methanol- d_4 .



HSQC spectrum (600 MHz) of iglu#9 (SI-4) in methanol- d_4 .



iglu#9



HMBC spectrum (600 MHz) of iglu#9 (SI-4) in methanol- d_4 .